

**THE SAENGER
THEATRE RENEWAL
PROJECT**

142 North Rampart Street
New Orleans, LA

Client
Saenger Theatre Redevelopment Company
200 West Loop South, Suite
1040 Houston TX 77027

Architect
**MARTINEZ+JOHNSON
ARCHITECTURE**

1412 Eye St. NW
Washington, DC 20005
202.333.4480

Structural Engineer
Shawn J. Franke, P.E.
549 Helmer Road San
Antonio TX 78232
210.979.7900

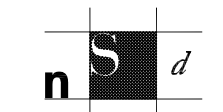
Theatre Consultant
Schuler Shook
123 Third Street North #210
Minneapolis, MN 55401
612.338.9998

Acoustical Engineer
Akustiks
93 North Main Street South
Norwalk, CT 06854
202.299.1904

MEP Engineer
JBA Consulting Engineers, Inc.
3525 N. Causeway Blvd., Suite
500 Metairie, LA 70002
504.830.0139

Civil Engineer
Linfield, Hunter, & Junius, Inc.
3608 18th Street Suite 200
Metairie, LA 70002
504.835.5300

Architectural Historian
EHT Traceries, Inc.
1121 Fifth Street NW
Washington, DC 20001
202.393.1199



Next Step Design
FOODSERVICE CONSULTANTS
1116 West Street, Suite C
Annapolis, MD 21401
410.263.1200

THESE DRAWINGS, SPECIFICATIONS, AND OTHER DOCUMENTS (COLLECTIVELY, "THE DOCUMENTS"), INCLUDING WITHOUT LIMITATION ELECTRONIC VERSIONS THEREOF AND THE IDEAS, DESIGNS, AND ARRANGEMENTS REPRESENTED THEREBY, ARE AND SHALL REMAIN THE PROPERTY OF MARTINEZ+JOHNSON ARCHITECTURE, P.C. AS DEFINED BY APPLICABLE CONTRACTUAL AGREEMENTS ("THE AGREEMENTS") AND AS PROTECTED BY THE COPYRIGHT STATUTES OF THE UNITED STATES. USE OF THE DOCUMENTS SHALL BE STRICTLY LIMITED TO THE PROJECT FOR WHICH THEY WERE PREPARED AND DEVELOPED ("THE PROJECT") PER THE TERMS OF THE AGREEMENTS. NO PART OF THE DOCUMENTS SHALL BE COPIED, DISCLOSED TO OTHERS, OR USED IN CONNECTION WITH ANY OTHER WORK OR PROJECT, OR BY ANY OTHER PERSONS FOR ANY PURPOSES, OTHER THAN THE COMPLETION OF THE PROJECT, WITHOUT THE SPECIFIC WRITTEN AUTHORIZATION OF MARTINEZ+JOHNSON ARCHITECTURE, P.C. THE DOWNLOADING, OPENING, OR VIEWING OF ELECTRONIC VERSIONS OF THE DOCUMENTS OR VISUAL CONTACT WITH ANY PRINTED FORM THEREOF SHALL CONSTITUTE CONCLUSIVE EVIDENCE OF ACCEPTANCE OF THESE RESTRICTIONS.

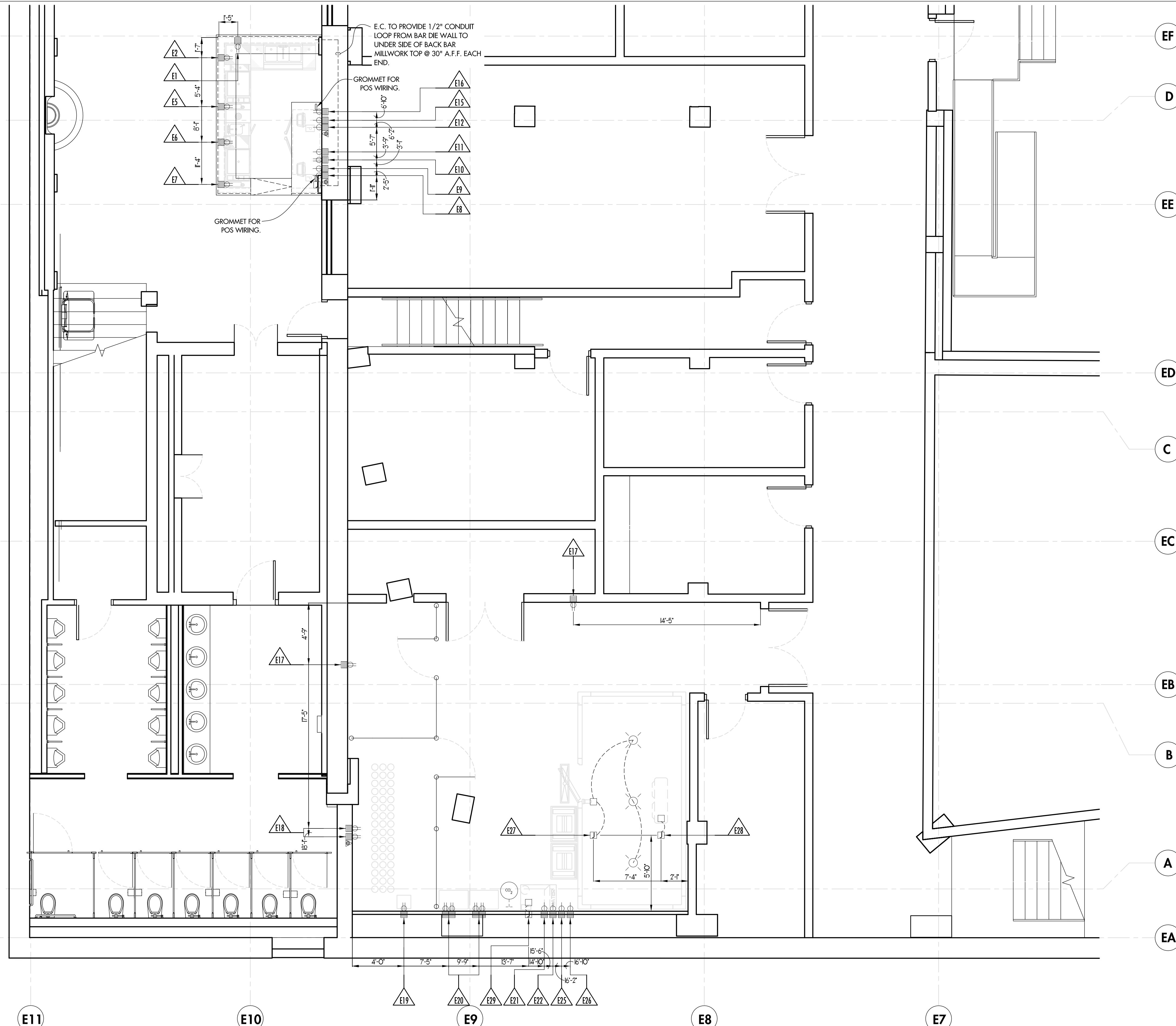
7502

DATE:	No.:	ISSUE:
02.19.10	1	PERMIT SET
04.02.10	2	GMP CONTRACT SET
11.11.10	-	CONTRACT SET

DATE:	No.:	REVISION:

SHEET TITLE:
**FOODSERVICE -
BASEMENT ELECTRICAL
ROUGH-IN PLAN**

FS-E1



ELECTRICAL LEGEND

- (DR) DUPLEX RECEPTACLE
- (SR) SINGLE RECEPTACLE
- CEILING LIGHT
- WALL LIGHT
- (JB) JUNCTION BOX
- DROP CORD (HEIGHT AS INDICATED)
- WALL SWITCH
- CONNECTION
- STUB-UP CIRCUIT / STUB-UP CONDUIT
- EMPTY CONDUIT FOR BEVERAGE LINES
- DATA OUTLET FOR P.O.S.
- VOLT
- PHASE
- KILOWATT
- AMPERE
- HORSE POWER
- ABOVE FINISH FLOOR
- CORD AND PLUG
- CONVENIENCE OUTLET
- BRANCH TO CONNECTION

GENERAL ELECTRICAL NOTES

1. ALL WORK TO BE DONE IN ACCORDANCE WITH ALL LOCAL CODES.
2. SEE ELECTRICAL ENGINEERING PLANS BY OTHERS FOR COMPLETE SCOPE OF WORK AND ELECTRICAL SPECIFICATIONS. ALL ROUGH-INS AND FINAL CONNECTIONS BY ELECTRICAL CONTRACTOR, EXCEPT WHERE NOTED.
3. ELECTRICIAN TO SUPPLY AND INSTALL ALL DUPLEX RECEPTACLES AND SWITCHES WITH STAINLESS STEEL FACE PLATES.
4. ELECTRICIAN TO SUPPLY ALL NECESSARY CONTACTORS, STARTERS, AND DISCONNECTS.
5. ELECTRICIAN TO WIRE DISPOSER WITH START-STOP STATION AND SOLENOID VALVE (AS SUPPLIED BY KEC).
6. ELECTRICIAN TO INTERWIRE CONDENSING UNITS WITH EVAPORATOR COILS IN WALK-IN COOLER/FREEZER UNITS.
7. ELECTRICIAN TO PROVIDE AND INSTALL (WRAP) HEAT TAPE AROUND CONDENSATE DRAIN LINES IN WALK-IN FREEZER.
8. ELECTRICIAN TO INTERWIRE EXTRA LIGHT FIXTURES IN WALK-IN COOLER, ITEM NO. #38, #335 & #339. CONDUIT TO RUN ON EXTERIOR (ABOVE) WHERE POSSIBLE.
9. ELECTRICIAN TO INTERWIRE FIRE EXTINGUISHING SYSTEM WITH EXHAUST FAN AND COOKING BATTERY, TO CAUSE FAN TO TURN ON AND COOKING BATTERY TO TURN OFF WHEN FIRE SYSTEM IS ACTIVATED.
13. ELECTRICIAN TO SUPPLY AND INSTALL START-STOP STATION FOR EXHAUST FAN ON DISHWASHER. DUCT AND FAN BY OTHERS.
14. SEE FOOD SERVICE SPECIAL CONDITION PLAN FOR CONDUIT REQUIREMENTS FOR BEER & SODA LINES. TO BE INCLUDED IN ELECTRICIAN'S SCOPE OF WORK.
15. ELECTRICIAN TO FLUSH-MOUNT ALL ROUGH-IN'S IN BAR DIE WALL AND AT BAR AREA.

COPYRIGHT
UNAUTHORIZED USE OF THE FOODSERVICE DESIGNS, DETAILS, AutoCAD® BLOCKS, AND SPECIFICATIONS CONTAINED IN THESE DOCUMENTS IS STRICTLY PROHIBITED. NSD, INC. MAINTAINS OWNERSHIP OF SAME. THIS PROHIBITION EXTENDS FROM PRINTED MATERIAL TO ANY ELECTRONIC VERSION OF THE SAME. NO USE, OTHER THAN THAT FOR WHICH IT IS INTENDED, IS STRICTLY PROHIBITED WITHOUT WRITTEN PERMISSION FROM NEXT STEP DESIGN, INC. ALL RIGHTS RESERVED.

BASEMENT ELECTRICAL ROUGH-IN PLAN

SCALE 1/4" = 1'-0"

FOODSERVICE - BASEMENT ELECTRICAL ROUGH-IN PLAN

1/4" = 1'-0"

1