

**THE SAENGER  
THEATRE RENEWAL  
PROJECT**

142 North Rampart Street  
New Orleans, LA

Client  
Saenger Theatre Redevelopment Company  
200 West Loop South, Suite  
1040 Houston TX 77027

Architect  
**MARTINEZ+JOHNSON  
ARCHITECTURE**

1412 Eye St. NW  
Washington, DC 20005  
202.333.4480

Structural Engineer  
Shawn J. Franke, P.E.  
548 Helmer Road San  
Antonio TX 78232  
210.979.7900

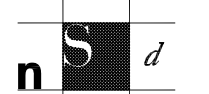
Theatre Consultant  
Schuler Shook  
123 Third Street North #210  
Minneapolis, MN 55401  
612.338.5958

Acoustical Engineer  
Akustiks  
93 North Main Street South  
Norwalk, CT 06854  
202.299.1904

MEP Engineer  
JBA Consulting Engineers, Inc.  
3525 N. Causeway Blvd., Suite  
500 Metairie, LA 70002  
504.830.0139

Civil Engineer  
Linfield, Hunter, & Junius, Inc.  
3608 18th Street Suite 200  
Metairie, LA 70002  
504.833.5300

Architectural Historian  
EHT Traceries, Inc.  
1121 Fifth Street NW  
Washington, DC 20001  
202.393.1199



Next Step Design  
**FOODSERVICE CONSULTANTS**  
1116 West Street, Suite C  
Annapolis, MD 21401  
410.263.1200

THESE DRAWINGS, SPECIFICATIONS AND OTHER DOCUMENTS (COLLECTIVELY, "THE DOCUMENTS") INCLUDING WITHOUT LIMITATION ELECTRONIC VERSIONS THEREOF AND THE IDEAS, DESIGNS AND ARRANGEMENTS REPRESENTED THEREBY, ARE AND SHALL REMAIN THE PROPERTY OF MARTINEZ + JOHNSON ARCHITECTURE, P.C. AS DEFINED BY APPLICABLE CONTRACTUAL AGREEMENTS ("THE AGREEMENTS") AND AS PROTECTED BY THE COPYRIGHT STATUTES OF THE UNITED STATES. USE OF THE DOCUMENTS SHALL BE STRICTLY LIMITED TO THE PROJECT FOR WHICH THEY WERE PREPARED AND DEVELOPED ("THE PROJECT") PER THE TERMS OF THE AGREEMENTS. NO PART OF THE DOCUMENTS SHALL BE COPIED, DISCLOSED TO OTHERS, OR USED IN CONNECTION WITH ANY OTHER WORK OR PROJECT, OR BY ANY OTHER PERSONS FOR ANY PURPOSES, OTHER THAN THE COMPLETION OF THE PROJECT, WITHOUT THE SPECIFIC WRITTEN AUTHORIZATION OF MARTINEZ + JOHNSON ARCHITECTURE, P.C. THE DOWNLOADING, OPENING, OR VIEWING OF ELECTRONIC VERSIONS OF THE DOCUMENTS OR VISUAL CONTACT WITH ANY PRINTED FORM THEREOF SHALL CONSTITUTE CONCLUSIVE EVIDENCE OF ACCEPTANCE OF THESE RESTRICTIONS.

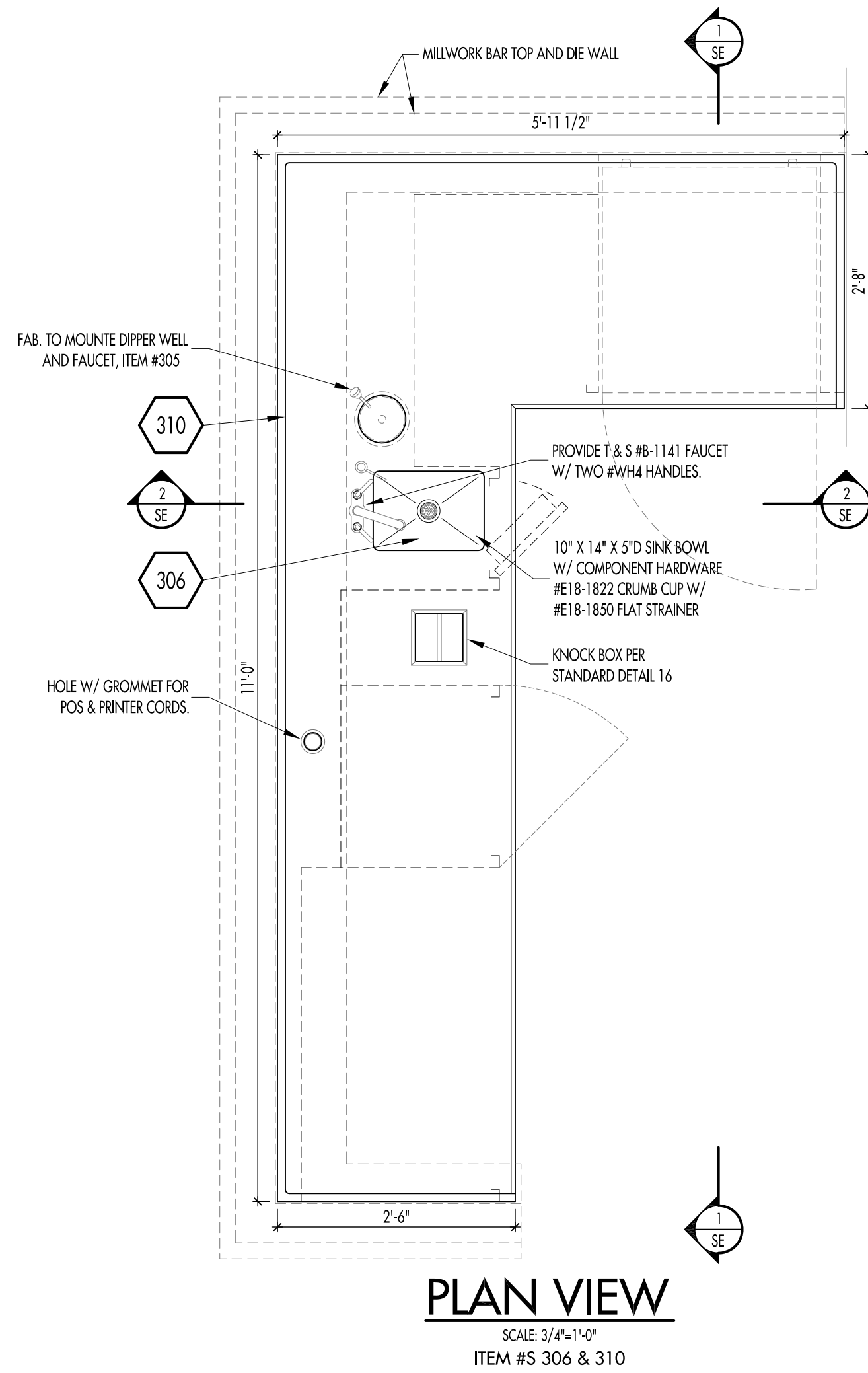
7502

DATE:	No.:	ISSUE:
02.19.10	1	PERMIT SET
04.02.10	2	GMP CONTRACT SET
11.11.10	-	CONTRACT SET

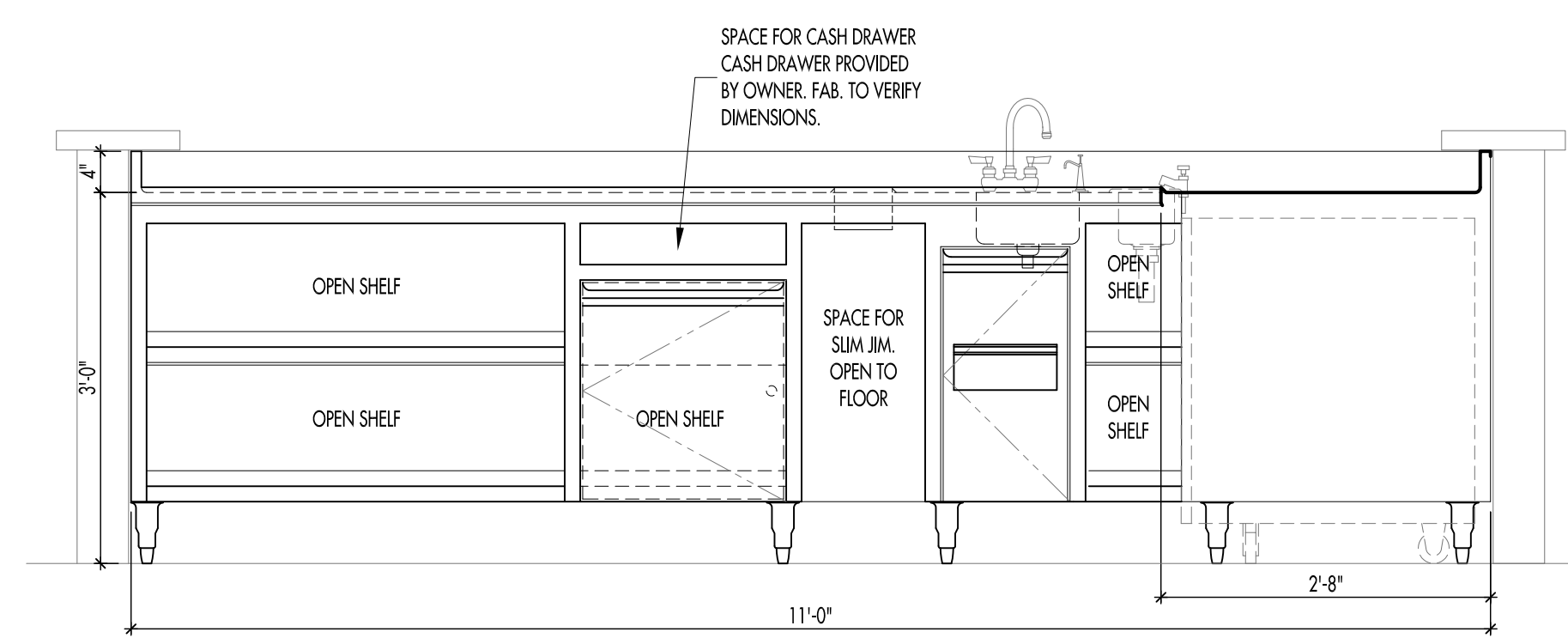
DATE:	No.:	REVISION:

SHEET TITLE:  
**FOODSERVICE  
FABRICATION  
ELEVATIONS & SECTIONS**

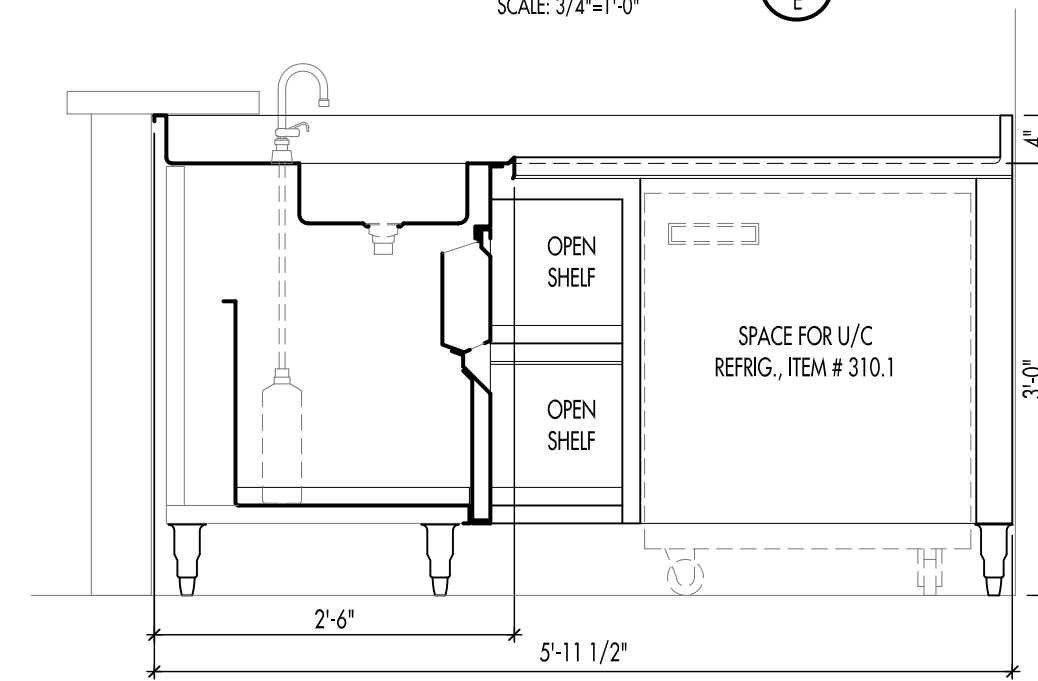
**FS-FAB2**



**PLAN VIEW**  
SCALE: 3/4"=1'-0"  
ITEM #S 306 & 310



**ELEVATION 1**  
SCALE: 3/4"=1'-0"



**ELEVATION 2**  
SCALE: 3/4"=1'-0"

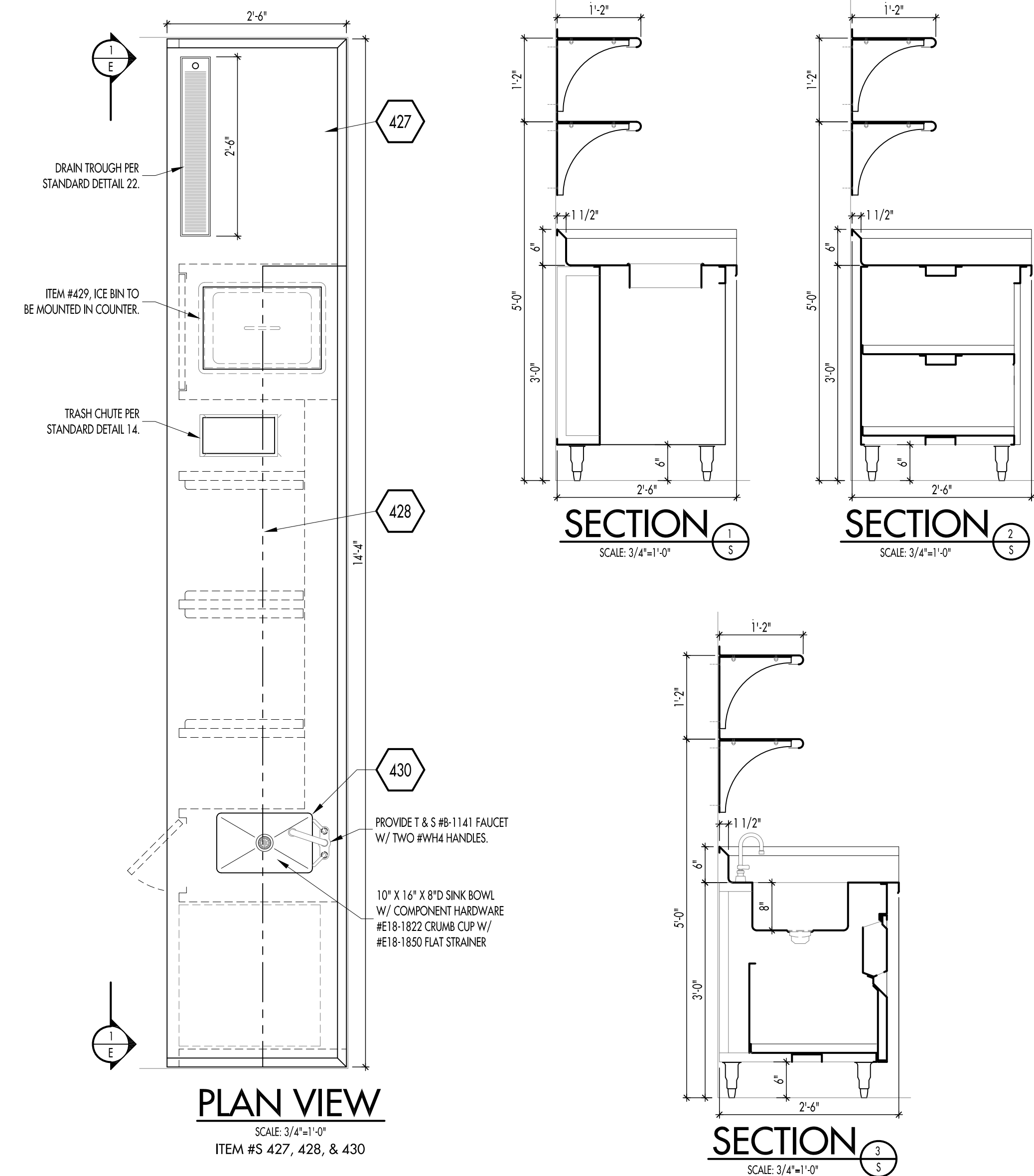
NOTE:  
FABRICATORS ARE RESPONSIBLE FOR OBTAINING THEIR OWN FIELD DIMENSIONS, LOCATIONS OF ANY REQUIRED FIELD JOINTS, AND FOR VERIFYING ALL CUTOUT AND OPENING DIMENSIONS SHOWN ON THESE DRAWINGS.

**COPYRIGHT**  
UNAUTHORIZED USE OF THE FOODSERVICE DESIGNS, DETAILS, AutoCAD BLOCKS, AND SPECIFICATIONS CONTAINED IN THESE DOCUMENTS IS STRICTLY PROHIBITED. NSD, INC. MAINTAINS OWNERSHIP OF SAME. THIS PROHIBITION EXTENDS FROM PRINTED MATERIAL TO ANY ELECTRONIC VERSION OF THE SAME. NO USE, OTHER THAN THAT FOR WHICH IT IS INTENDED, IS STRICTLY PROHIBITED WITHOUT WRITTEN PERMISSION FROM NEXT STEP DESIGN, INC. ALL RIGHTS RESERVED.

- CONSTRUCTION NOTES:**
- UNLESS OTHERWISE NOTED, METAL GAUGES SHALL BE AS FOLLOWS:  
A. BASES, INCLUDING EXTERIOR AND INTERIOR WRAPS AND PANELS AND FACES OF DOORS, DRAWERS, AND ACCESS PANELS TO BE 18GA S/S  
B. TOPS, SINK BOWLS, AND SPLASHES TO BE 14GA S/S  
C. WALL AND TABLE MOUNTED SHELVES TO BE 14GA S/S. WALL SHELVES TO BE SUPPORTED USING 14GA S/S BRACKETS. TABLE MOUNTED SHELVES TO BE SUPPORTED USING 1 5/8" ROUND S/S TUBING AND 14GA S/S GUSSETS.  
D. WALL CABINET WRAPS AND DOOR FACES TO BE 18GA S/S. INTERIOR SHELVES TO BE 14GA S/S.  
E. INTERIOR REFRIGERATOR, FREEZER, & HEATED CABINET WRAPS TO BE 20GA S/S.  
F. OPEN CABINET BASE & WORK TABLE UNDERSHELVES TO BE 14GA S/S.
  - UNLESS OTHERWISE NOTED, ALL EDGES SHALL BE AS FOLLOWS:  
A. COUNTER TOPS: BULLNOSE EDGE - DETAIL 1  
B. CABINET BASE OPEN SHELVES: FLAT EDGE - DETAIL 2  
C. OPEN BASE OPEN SHELVES: FLAT EDGE - DETAIL 2  
D. WALL SHELVES/PASS THRU SHELVES: LONG FLAT EDGE - DETAIL 6
  - LEGS TO BE 1 5/8" DIA. S/S W/S/S GUSSETS AND S/S ADJ. BULLET FEET.
  - CROSSBRACING TO 1 1/4" DIA. S/S TUBING.
  - ALL EXPOSED CHANNEL FRAMING TO BE 14GA S/S. USE 14GA GALV. OTHERWISE.
  - ALL CUTTING BOARDS TO BE 3/4" THICK AND MANUFACTURED BY RICHLITE.
  - PROVIDE SOUND DEADENING MATERIAL ON UNDERSIDE OF ALL TOPS.
  - PROVIDE (1) ORANGE FACE S.R. SINGLE RECEPTACLE FOR PRINTER AND (1) EMPTY J.B. FOR POS DATA CABLE. USE COMPONENT HARDWARE #RS8-1010. RUN (CONCEALED) CONDUIT W/ PULL STRING FROM EACH PRINTER DATA BOX TO SUB PANEL COMPARTMENT.
  - PROVIDE REFRIGERATOR/FREEZER DRAWERS AND DOORS WITH CAM LOCKS AND PROVIDE SINGLE KEY TO FIT ALL. SEE DETAILS 43 & 46.

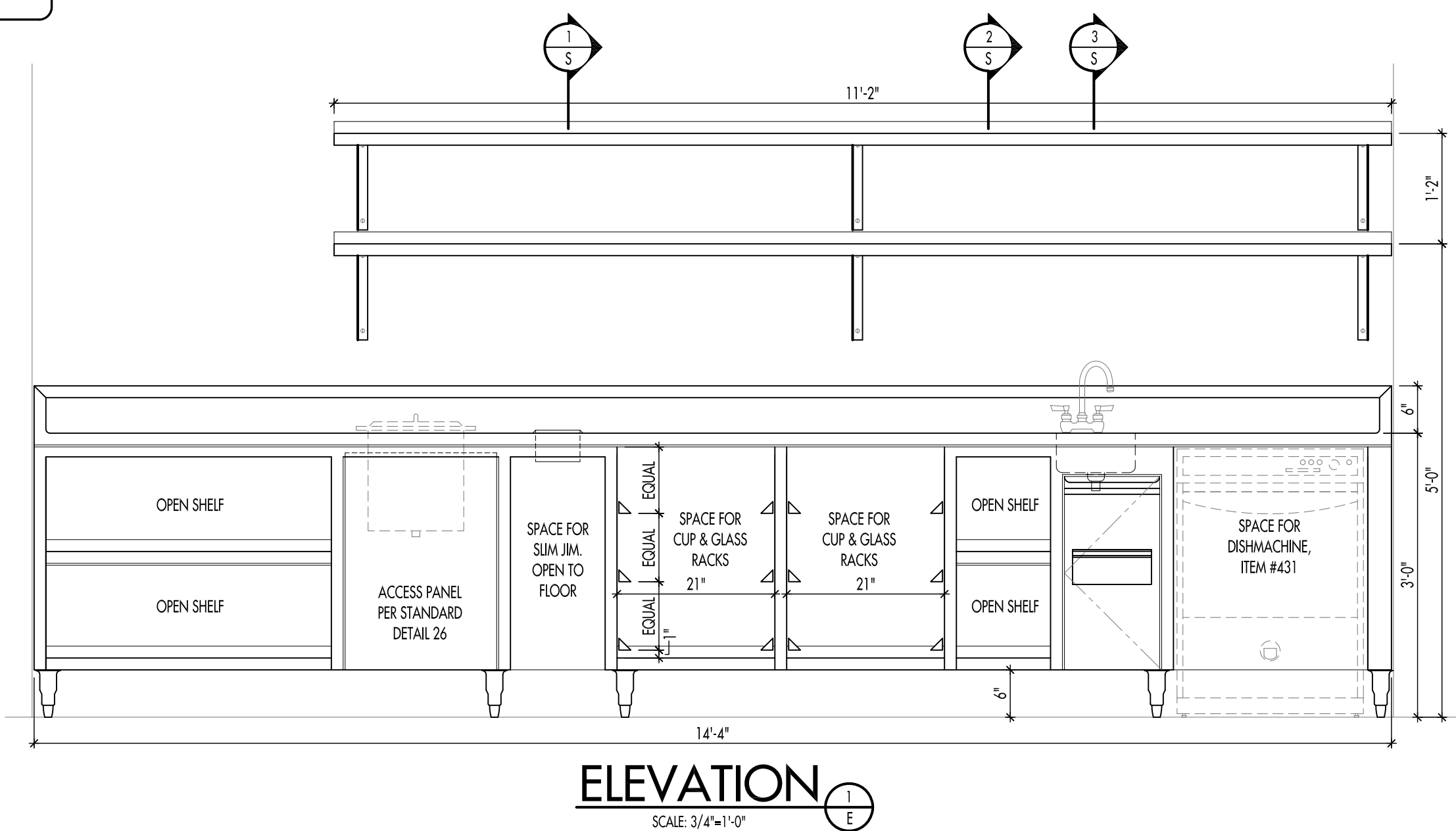
**FABRICATION DETAILS**

SCALE AS NOTED



**PLAN VIEW**  
SCALE: 3/4"=1'-0"  
ITEM #S 427, 428, & 430

**SECTION 1 & 2**  
SCALE: 3/4"=1'-0"



**ELEVATION 3**  
SCALE: 3/4"=1'-0"