

**THE SAENGER  
THEATRE RENEWAL  
PROJECT**

142 North Rampart Street  
New Orleans, LA

Client  
Saenger Theatre Redevelopment Company  
200 West Loop South, Suite  
1040 Houston TX 77027

Architect  
**MARTINEZ+JOHNSON  
ARCHITECTURE**

1412 Eye St., NW  
Washington, DC 20005  
202.333.4480

Structural Engineer  
Shawn J. Franke, P.E.  
540 Helmer Road San  
Antonio TX 78232  
210.979.7900

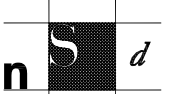
Theatre Consultant  
Schuler Shook  
123 Third Street North #210  
Minneapolis, MN 55401  
612.338.5958

Acoustical Engineer  
Akustiks  
93 North Main Street South  
Norwalk, CT 06884  
202.299.1904

MEP Engineer  
JBA Consulting Engineers, Inc.  
3525 N. Causeway Blvd., Suite  
500 Metairie, LA 70002  
504.830.0139

Civil Engineer  
Linfield, Hunter, & Junius, Inc.  
3608 18th Street Suite 200  
Metairie, LA 70002  
504.835.5300

Architectural Historian  
EHT Traceries, Inc.  
1121 Fifth Street NW  
Washington, DC 20001  
202.393.1199



Next Step Design  
FOODSERVICE CONSULTANTS  
116 West Street, Suite C  
Annapolis, MD 21401  
410.263.1200

THESE DRAWINGS, SPECIFICATIONS AND OTHER DOCUMENTS (COLLECTIVELY, "THE DOCUMENTS") INCLUDING WITHOUT LIMITATION ELECTRONIC VERSIONS THEREOF AND THE IDEAS, DESIGNS, AND ARRANGEMENTS REPRESENTED THEREBY, ARE AND SHALL REMAIN THE PROPERTY OF MARTINEZ & JOHNSON ARCHITECTURE, P.C. AS DEFINED BY APPLICABLE CONTRACTUAL AGREEMENTS ("THE AGREEMENTS") AND AS PROTECTED BY THE COPYRIGHT STATUTES OF THE UNITED STATES. USE OF THE DOCUMENTS SHALL BE STRICTLY LIMITED TO THE PROJECT FOR WHICH THEY WERE PREPARED AND DEVELOPED ("THE PROJECT") PER THE TERMS OF THE AGREEMENTS. NO PART OF THE DOCUMENTS SHALL BE COPIED, DISCLOSED TO OTHERS, OR USED IN CONNECTION WITH ANY OTHER WORK OR PROJECT, OR BY ANY OTHER PERSONS FOR ANY PURPOSES, OTHER THAN THE COMPLETION OF THE PROJECT, WITHOUT THE SPECIFIC WRITTEN AUTHORIZATION OF MARTINEZ & JOHNSON ARCHITECTURE, P.C. THE DOWNLOADING, OPENING, OR VIEWING OF ELECTRONIC VERSIONS OF THE DOCUMENTS OR VISUAL CONTACT WITH ANY PRINTED FORM THEREOF SHALL CONSTITUTE CONCLUSIVE EVIDENCE OF ACCEPTANCE OF THESE RESTRICTIONS.

7502

DATE:	No.:	ISSUE:
02.19.10	1	PERMIT SET
04.02.10	2	GMP CONTRACT SET
11.11.10	-	CONTRACT SET

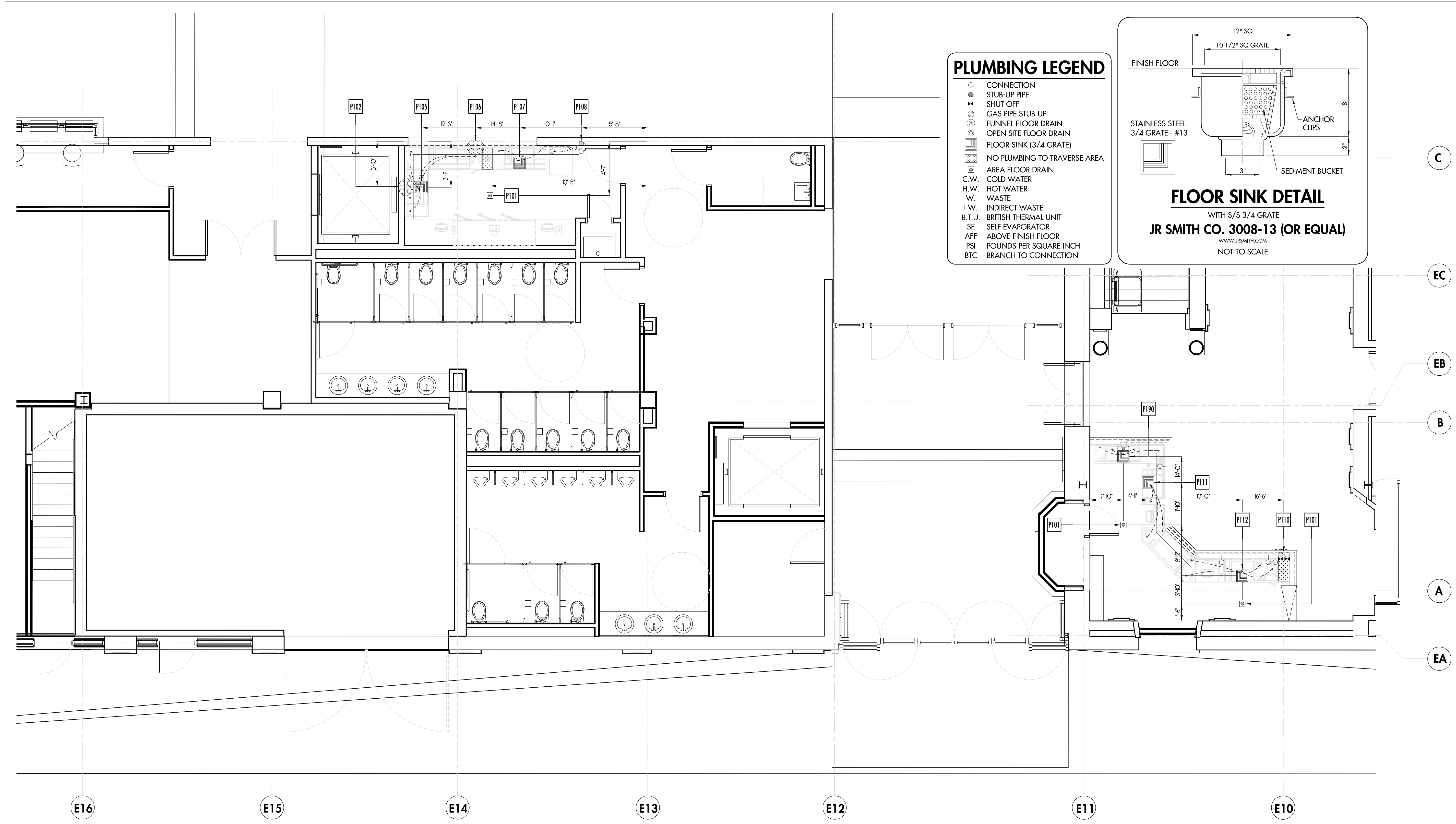
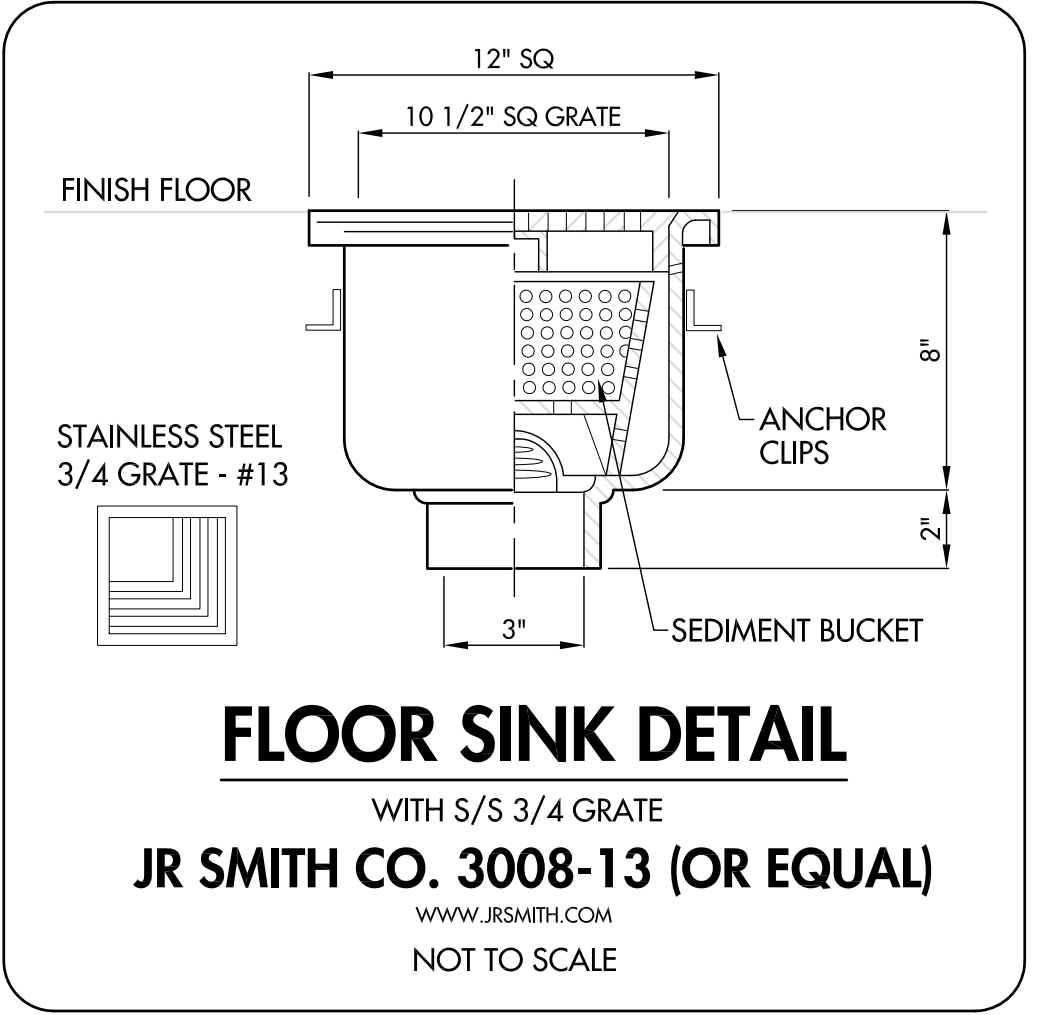
DATE:	No.:	REVISION:

SHEET TITLE:  
**FOODSERVICE -  
ORCHESTRA PLUMBING  
ROUGH-IN PLAN**

**FS-P2**

**PLUMBING LEGEND**

- CONNECTION
- STUB-UP PIPE
- ✕ SHUT OFF
- ⊕ GAS PIPE STUB-UP
- ⊖ FUNNEL FLOOR DRAIN
- ⊙ OPEN SITE FLOOR DRAIN
- ⊞ FLOOR SINK (3/4 GRATE)
- ⊞ NO PLUMBING TO TRAVERSE AREA
- ⊞ AREA FLOOR DRAIN
- C.W. COLD WATER
- H.W. HOT WATER
- W. WASTE
- I.W. INDIRECT WASTE
- B.T.U. BRITISH THERMAL UNIT
- SE SELF EVAPORATOR
- AFF ABOVE FINISH FLOOR
- PSI POUNDS PER SQUARE INCH
- BTC BRANCH TO CONNECTION



**COPYRIGHT®**  
UNAUTHORIZED USE OF THE FOODSERVICE DESIGNS, DETAILS, AutoCAD® BLOCKS, AND SPECIFICATIONS CONTAINED IN THESE DOCUMENTS IS STRICTLY PROHIBITED. NSD, INC. MAINTAINS OWNERSHIP OF SAME. THIS PROHIBITION EXTENDS FROM PRINTED MATERIAL TO ANY ELECTRONIC VERSION OF THE SAME. NO USE, OTHER THAN THAT FOR WHICH IT IS INTENDED, IS STRICTLY PROHIBITED WITHOUT WRITTEN PERMISSION FROM NEXT STEP DESIGN, INC. ALL RIGHTS RESERVED.

**ORCHESTRA PLUMBING ROUGH-IN PLAN**

SCALE 1/4" = 1'-0"