

THE SAENGER THEATRE RENEWAL PROJECT

142 North Rampart Street
New Orleans, LA

Client
Saenger Theatre Redevelopment Company
200 West Loop South, Suite
1040 Houston TX 77027

Architect
MARTINEZ+JOHNSON ARCHITECTURE

1412 Eye St. NW
Washington, DC 20005
202.333.4480

Structural Engineer
Shawn J. Franke, P.E.
540 Helmer Road San
Antonio TX 78232
210.979.7900

Theatre Consultant
Schuler Shook
123 Third Street North #210
Minneapolis, MN 55401
612.338.9988

Acoustical Engineer
Akustiks
93 North Main Street South
Norwalk, CT 06854
202.299.1904

MEP Engineer
JBA Consulting Engineers, Inc.
3525 N. Causeway Blvd., Suite
500 Metairie, LA 70002
504.830.0139

Civil Engineer
Linfield, Hunter, & Junius, Inc.
3608 18th Street Suite 200
Metairie, LA 70002
504.833.5300

Architectural Historian
EHT Traceries, Inc.
1121 Fifth Street NW
Washington, DC 20001
202.393.1199



Next Step Design
FOODSERVICE CONSULTANTS
116 West Street, Suite C
Annapolis, MD 21401
410.263.1200

7502

THESE DRAWINGS, SPECIFICATIONS AND OTHER DOCUMENTS (COLLECTIVELY "THE DOCUMENTS") INCLUDING WITHOUT LIMITATION ELECTRONIC VERSIONS THEREOF AND THE IDEAS, DESIGNS AND ARRANGEMENTS REPRESENTED THEREBY ARE AND SHALL REMAIN THE PROPERTY OF MARTINEZ & JOHNSON ARCHITECTURE, P.C. AS DEFINED BY APPLICABLE CONTRACTUAL AGREEMENTS ("THE AGREEMENTS") AND AS PROTECTED BY THE COPYRIGHT STATUTES OF THE UNITED STATES. USE OF THE DOCUMENTS SHALL BE STRICTLY LIMITED TO THE PROJECT FOR WHICH THEY WERE PREPARED AND DEVELOPED ("THE PROJECT") PER THE TERMS OF THE AGREEMENTS. NO PART OF THE DOCUMENTS SHALL BE COPIED, DISCLOSED TO OTHERS OR USED IN CONNECTION WITH ANY OTHER WORK OR PROJECT, OR BY ANY OTHER PERSONS FOR ANY PURPOSES, OTHER THAN THE COMPLETION OF THE PROJECT, WITHOUT THE SPECIFIC WRITTEN AUTHORIZATION OF MARTINEZ & JOHNSON ARCHITECTURE, P.C. THE DOWNLOADING, OPENING OR VIEWING OF ELECTRONIC VERSIONS OF THE DOCUMENTS OR VISUAL CONTACT WITH ANY PRINTED FORM THEREOF SHALL CONSTITUTE CONCLUSIVE EVIDENCE OF ACCEPTANCE OF THESE RESTRICTIONS.

DATE:	No.:	ISSUE:
02.19.10	1	PERMIT SET
04.02.10	2	GMP CONTRACT SET
11.11.10	-	CONTRACT SET

DATE:	No.:	REVISION:

SHEET TITLE:
FOODSERVICE - WALK-IN COOLER/FREEZER DETAILS

FS-WIC1

WARNING

DO NOT EXPOSE CARTONED OR STACKED PANELS TO MOISTURE OR HIGH HUMIDITY CONDITIONS DURING STORAGE. STAINING OR OXIDIZING OF METAL SKINS MAY OCCUR.

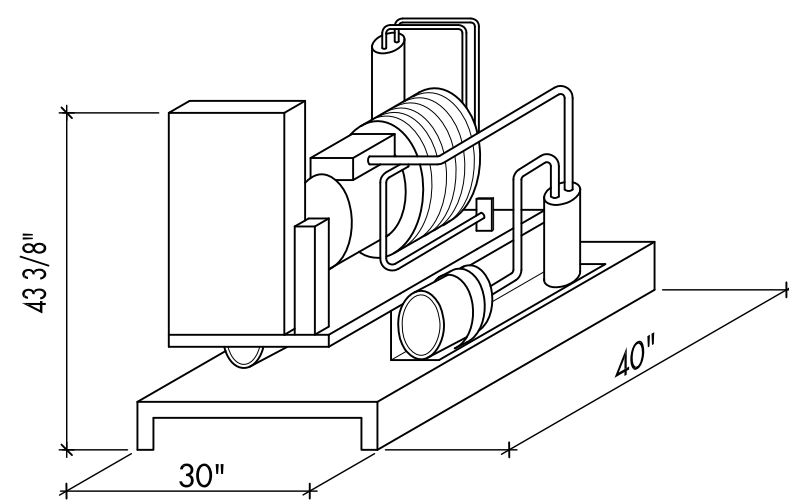
NOTICE

THIS ORDER CANNOT BE PLACED INTO PRODUCTION UNTIL WE RECEIVE FINAL APPROVED DRAWING AND SPECIFICATIONS. THE DATE OF RECEIPT CAN AFFECT YOUR PROMISED DELIVERY DATE.

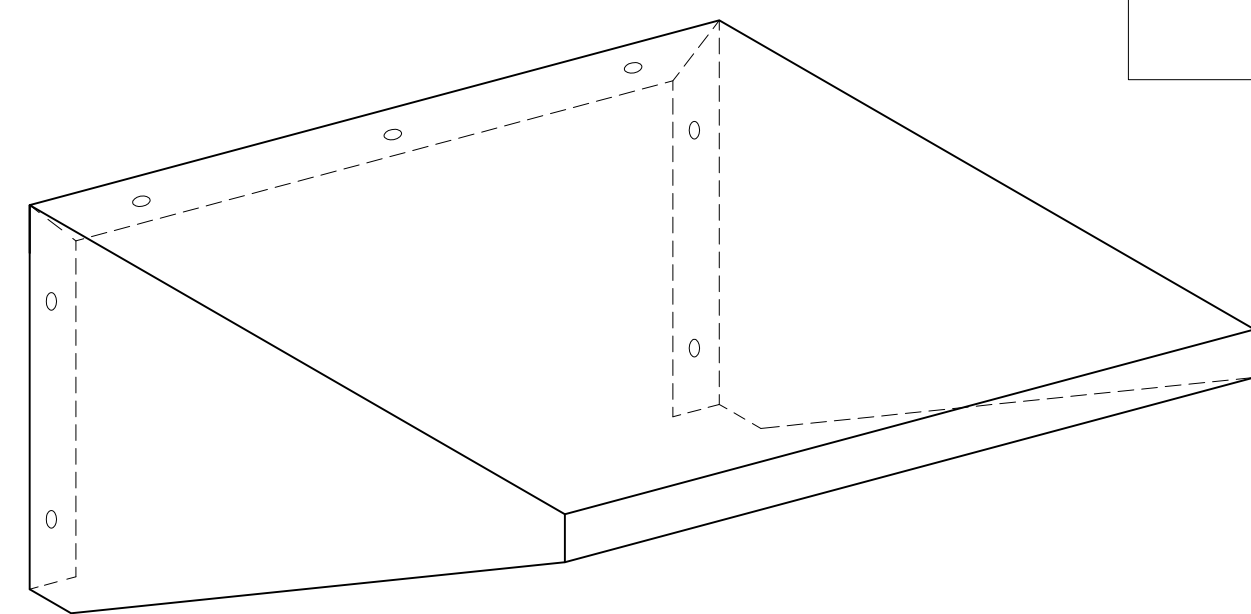
THIS THERMO-KOOL WALK-IN WILL BE MANUFACTURED TO UL & NSF REQUIREMENTS. THERMO-KOOL ACCEPTS NO LIABILITY FOR LOCAL CODE REQUIREMENTS OF WHICH THERMO-KOOL HAS NOT BEEN MADE AWARE IN WRITING PRIOR TO FABRICATION.

PULL DOWN RATE TO 45° F IS UNRESTRICTED. AFTER 45° F, PULL DOWN RATE SHOULD BE RESTRICTED TO 10° F PER/ 24 HOUR PERIOD.

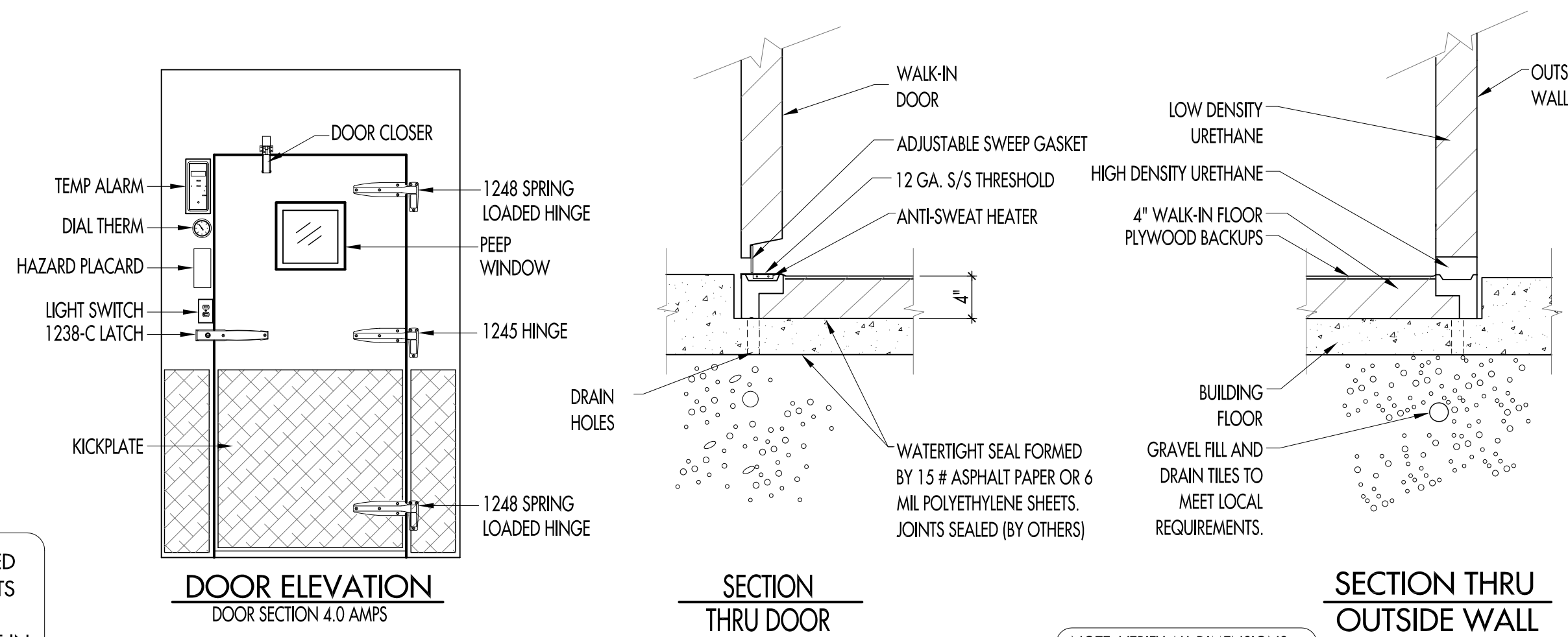
"MEETS 2009 ENERGY CODE STANDARD"



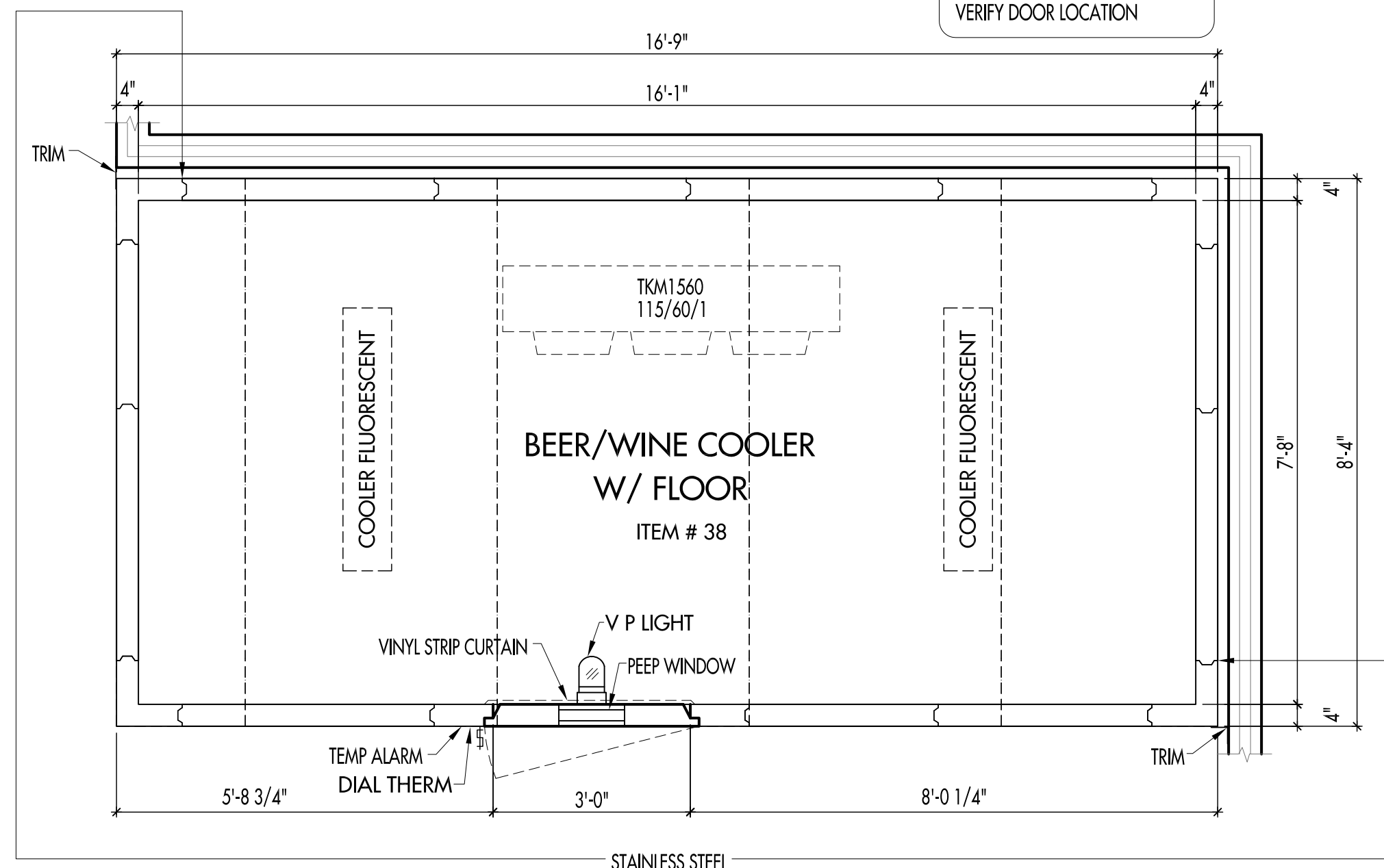
UNIT SIZE WITHOUT BASE:
23 3/4" X 35" X 37 3/8"
SWN0199M6C
208-230/60/30



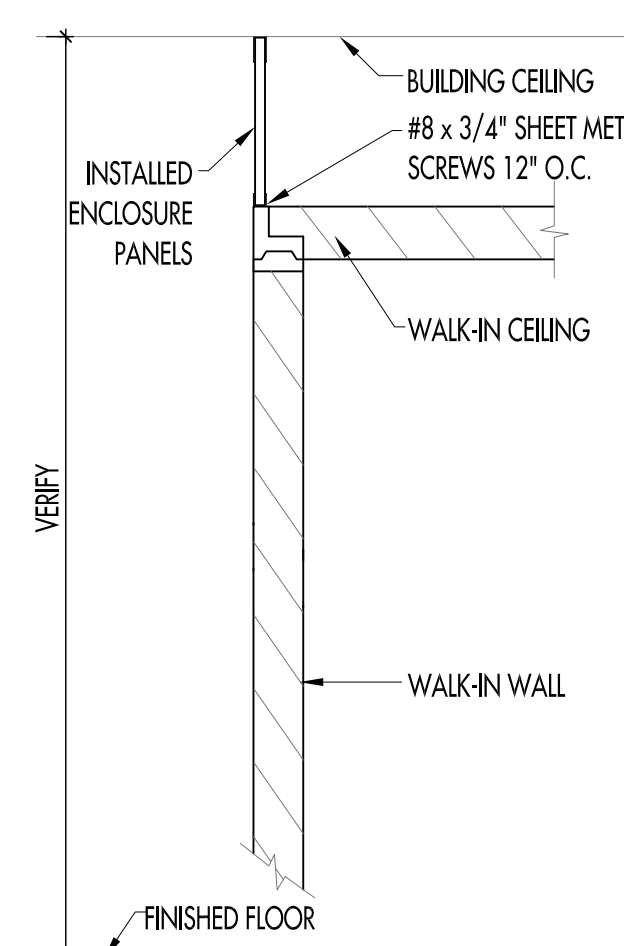
TYPICAL WALL-MOUNT BASE



NOTE: VERIFY ALL DIMENSIONS
VERIFY TRIM/ENCLOSURE HEIGHT
VERIFY DOOR LOCATION



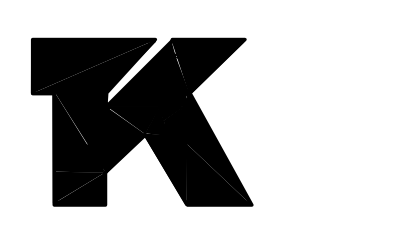
Q8198A-82



ENCLOSURE PANEL DETAIL

WALK-IN PANEL
Thermo-Kool/Mid-South Industries, Inc.
R-14781
1F68
BUILDING UNITS
SURFACE BURNING CHARACTERISTICS

	4 in. CORE MATERIAL	4 in. THICK PAINTED OR UNPAINTED ALUMINUM PANEL	4 in. THICK PAINTED OR UNPAINTED GALVANIZED OR STAINLESS STEEL PANEL
FLAME SPREAD	25	15	20
SMOKE DEVELOPEMENT	450	450	OVER 500



Thermo-Kool
Mid-South Industries, Inc. • P.O. Box 989
Laurel Mississippi 39441 • Phone 601/649-4600
FAX 601/649-0558

NOTICE: This drawing, and all drawings or specifications submitted by Thermo-Kool, and reproductions thereof in whole or in part shall remain the legal property of Mid-South Industries, Inc., subject to recall at any time and shall not be used for installations or production by others except by our special permission in writing.
Walk-in panels manufactured under Patent # 5,424,118.

WALK-IN COOLER DETAILS

SCALE 1/2" = 1'-0"

- OVERALL DIMENSIONS LENGTH 16'-9" DEPTH 8'-4" HEIGHT 8'-6"
- FINISH-Exterior
- 26 Ga. Stucco Embossed Galv. Steel
 - .040 Stucco Aluminum
 - 20 Ga. Type 304 #3 Finish Stainless Steel
 - White Stucco Aluminum
 - White Smooth Aluminum
 - White Stucco Galv.
 - White Smooth Galv.
- Interior (walls and ceiling)
- 26 Ga. Stucco Embossed Galv. Steel
 - .040 Stucco Aluminum
 - 20 Ga. Type 304 #3 Finish Stainless Steel
 - White Stucco Aluminum
 - White Smooth Aluminum
 - White Stucco Galv.
 - White Smooth Galv.
- EXPOSED
- 4" x 2" Vinyl U-Channel Screeds
 - Wall Anchors
 - 4 1/4" Foam Screeds
 - 2 1/4" Vinyl Screeds
- FINISH-Interior Floor
- Built-in by others. (Breaker strip must be under all wall panels including partitions)
 - 14 Ga. Bright Galvanized Steel
 - 16 Ga. Stainless Steel
 - 1/8" Smooth Aluminum DURA FLOOR
 - Treadbrite Aluminum Foamed-In-Place
 - 1/8" Treadplate Aluminum Foamed-In-Place
- SEE DETAIL BELOW

THERMO-KOOL WALK-IN FLOOR PANELS ARE DESIGNED TO WITHSTAND UNIFORMLY DISTRIBUTED STATIONARY LOADS OF 600 LBS. PER SQUARE FOOT. THERMO-KOOL'S WARRANTY DOES NOT COVER DAMAGE DUE TO PALLET JACKS, MOBILE CARTS, MOBILE SHELVING, FORK LIFTS, OR ANY OTHER FORM OF ROLLING TRAFFIC. A CONCRETE WEARING FLOOR MUST BE INSTALLED ON TOP OF THE WALK-IN FLOOR PANELS FOR THIS APPLICATION.

- SECTION FASTENERS-Thermo-Kool cam type Insta-Lok
- INSULATION-4" thickness "Foamed-in-place" urethane-DURATHANE CONSTRUCTION CLASS I
- OUTDOOR INSTALLATION
- Vinyl weather roof W/ Fascia Bar & Cover
 - Sloped Foam
 - Aluminum weather roof by Thermo-Kool (W/ Weathercap Trim)
- INDOOR INSTALLATION
- ELECTRICAL-All wiring contained within the door sections is 115/60/1Ø. Connections to this and all other lights and refrigeration supplied by others.
- ENTRANCE DOOR-Flush infitting type with poly vinyl magnetic gasket and vinyl sweep gasket on bottom edge. Heater cables are built in around door opening to prevent frost accumulation and sweating. Ext. has a thermometer, indicating light and toggle switch. Interior has vapor proof light. Hinges are cam action type. Door finishes will be the same as adjacent panels unless specified otherwise under Door Accessories.

- DOOR SIZE & QTY
- () 34" x 76"
 - () 30" x 76"
 - (1) 36" x 78"
- HARDWARE
- 1238-C LATCH, (2) 1245 HINGES, DOOR CLOSER
 - 1238-C LATCH, (3) 1245 HINGES, DOOR CLOSER
 - 1238-C LATCH, (1) 1245 HINGE, (2) 1248 SPRING LOADED HINGES, DOOR CLOSER

- DOOR ACCESSORIES
- (1) 14" x 14" Peep Window(s)
 - () 14" x 24" Peep Window(s)
 - (1) - VINYL STRIP CURTAIN TO FIT AN OPENING SIZE 30" x 76"
 - ALUMINUM TREADBRITE INTERIOR/EXTERIOR KICKPLATES & JAMB GUARDS 36" HIGH
 - 12 GA. STAINLESS STEEL THRESHOLD
 - VP LIGHT TO BE CENTERED ABOVE DOOR
 - (1) - MODULARM 75 TEMPERATURE ALARM
 - ALL FIELD SERVICE BOXES & SWITCHES ON INTERIOR OF WALK-IN TO BE WATER TIGHT
- MISCELLANEOUS EQUIPMENT
- () Lights (NOT MOUNTED) 1 AMP EACH
 - Interior Floor Ramp
 - Exterior Floor Ramp
 - # 1830 Heated Pressure Relief Vent (FREEZER ONLY) .5 AMPS EACH
 - # 1832-4 Heated Pressure Relief Vent (FREEZER ONLY) .5 AMPS EACH
 - STAINLESS STEEL Trim & Enclosures (see detail)
 - (2) - 4' FLUORESCENT LIGHT FIXTURES (BULBS BY OTHERS)
 - ALL FIELD SERVICE BOXES & SWITCHES ON INTERIOR OF WALK-IN TO BE WATER TIGHT
 - 1/2" PLYWOOD SUBFLOOR

- REFRIGERATION- Aircooled Watercooled By Others
- 2 HP MED TEMP SWN0199M6C 208-230/60/3Ø W/ TKM-1560 115/60/1Ø
CONDENSING UNIT AMPS: 7.25
COIL AMPS: 2.7
R-404A REFRIGERANT, SEMI HERMETIC
BTU CAPACITY @ 35°F ROOM TEMP = 16,750
LIQUID LINE SIZE = 3/8"
SUCTION LINE SIZE = 7/8"
BASE SIZE = 23 3/4" x 35" x 37 3/8"
UNIT(S) WITH A TIME CLOCK
EVAPORATOR COIL(S) WITH EC MOTORS
WITH WALL MOUNT BASE (SHIPPED LOOSE)
- Condensing unit indoor
Condensing unit outdoor
Side Mounted Self Contained
Top Mounted Self Contained
Quick Connect Remote Top Mounted
Prewired, Preassembled Remote
- NOTES: Aircooled condensing units should be placed in a well ventilated area with a minimum of 1000 CFM's per/H.P.
Evaporator drain connections by others.
NOTE: THERMO-KOOL recommends a 1" min. clearance between walk-in & building walls.



CONTROL KIT-The following controls indicated with a mark are included.

- Expansion valve
- Dryer
- Sight glass
- Temperature control
- Pump down solenoid valve
- Freezer Time Clock
- Pressure control
- Suction line vibration eliminator
- Winter control
- Crankcase heater
- Condensing unit cover
- Coil Mounting Kit

COPYRIGHT
UNAUTHORIZED USE OF THE FOODSERVICE DESIGNS, DETAILS, AutoCAD® BLOCKS, AND SPECIFICATIONS CONTAINED IN THESE DOCUMENTS IS STRICTLY PROHIBITED. NSD, INC. MAINTAINS OWNERSHIP OF SAME. THIS PROHIBITION EXTENDS FROM PRINTED MATERIAL TO ANY ELECTRONIC VERSION OF THE SAME. NO USE, OTHER THAN THAT FOR WHICH IT IS INTENDED, IS STRICTLY PROHIBITED WITHOUT WRITTEN PERMISSION FROM NEXT STEP DESIGN, INC. ALL RIGHTS RESERVED.