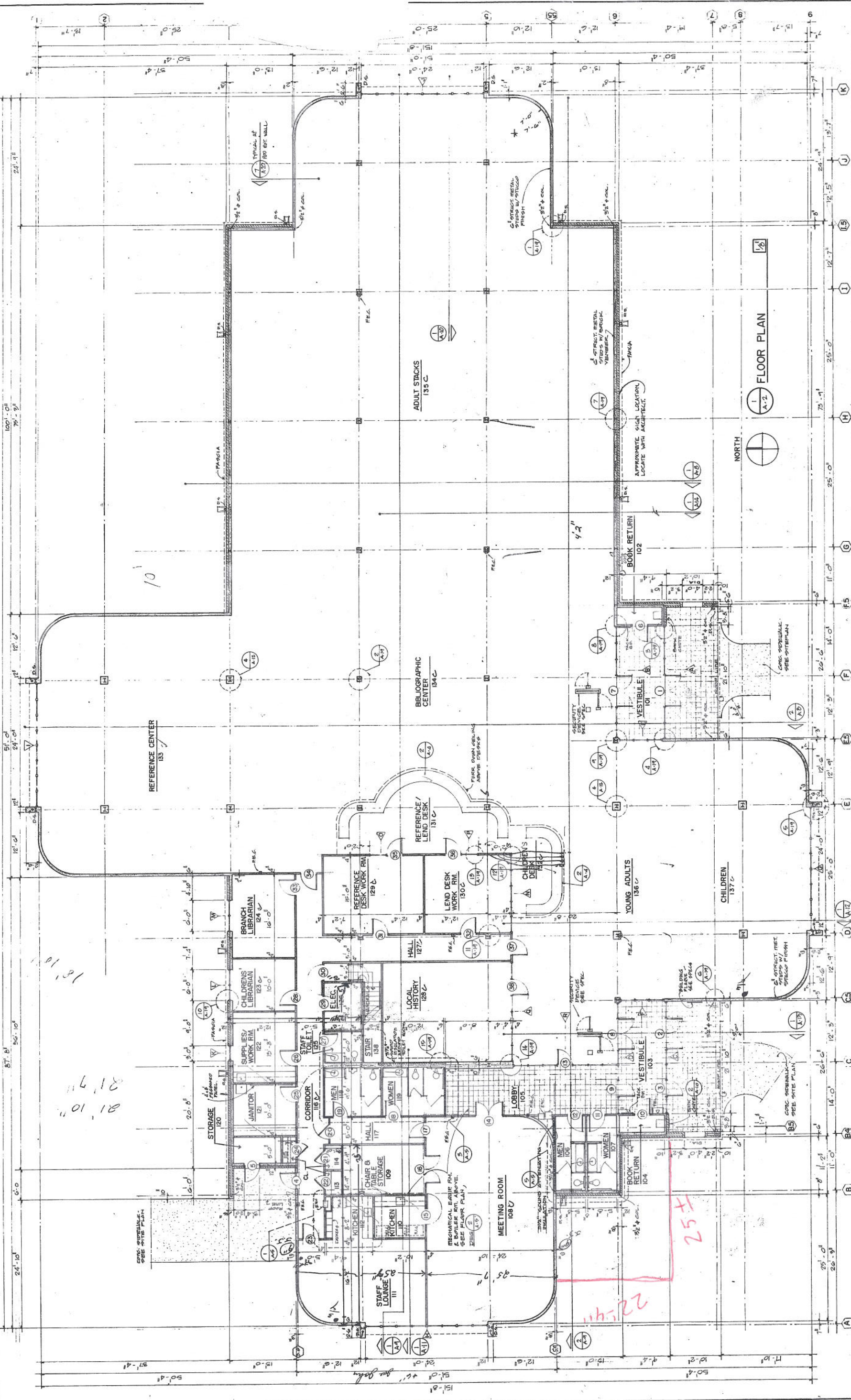


413 ± 50 FT





DRAWN: NS
DATE: 9-27-80
CHECKED: JBF
REVISED:

A.3
of 22

FLOOR PLAN

SLIDELL BRANCH LIBRARY BUILDING
ROBERT ROAD AT NORTH BOULEVARD
SLIDELL, LOUISIANA

FOR THE
ST. TAMMANY PARISH POLICE JURY
AND THE
ST. TAMMANY PARISH LIBRARY BOARD OF CONTROL

FAUNTLEROY & LATHAM
ARCHITECTS
316 NORTH LEE LANE
COVINGTON, LA. 70433

SAM FAUNTLEROY AIA
KENNETH LATHAM AIA

NCARB
NCARB