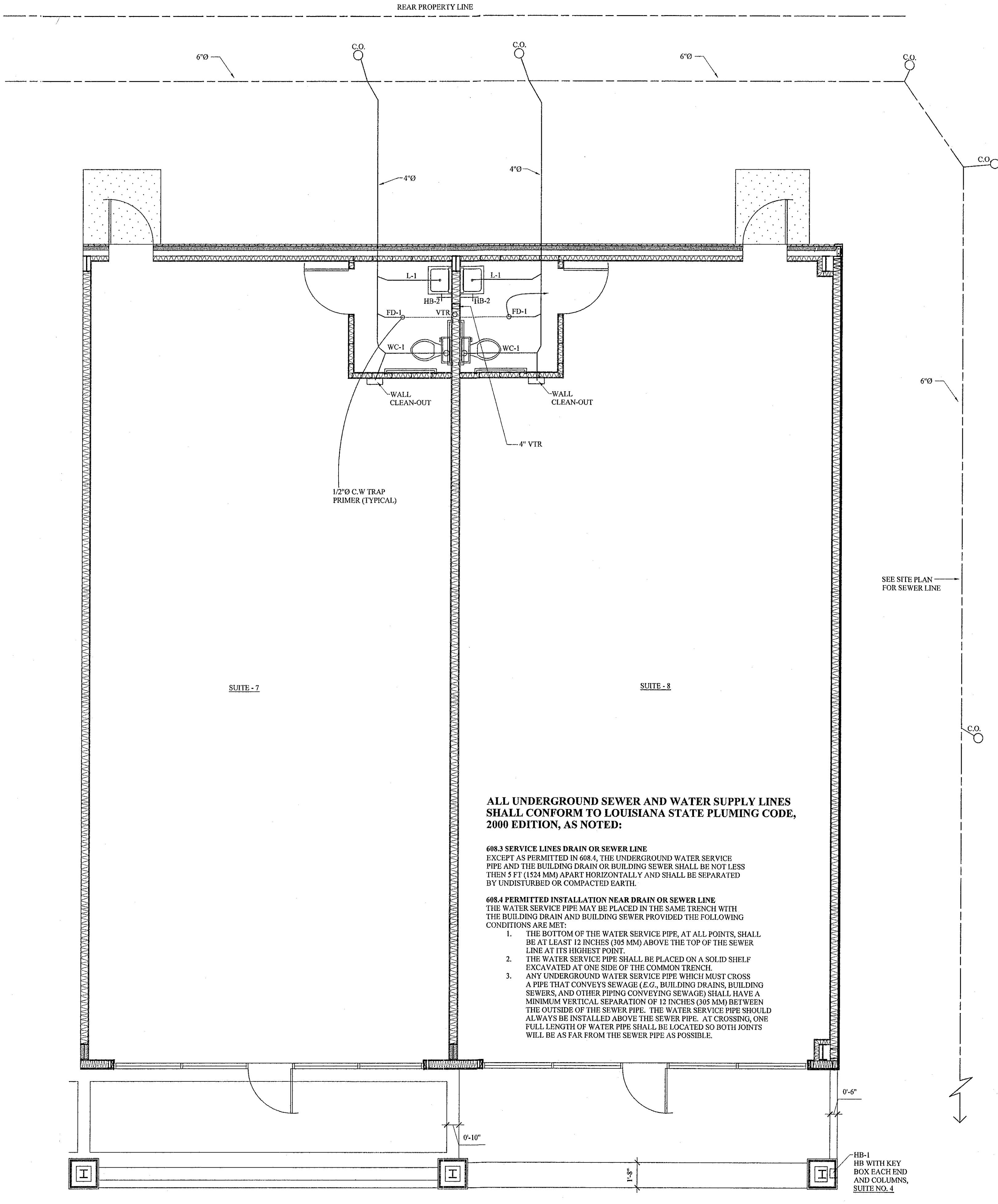
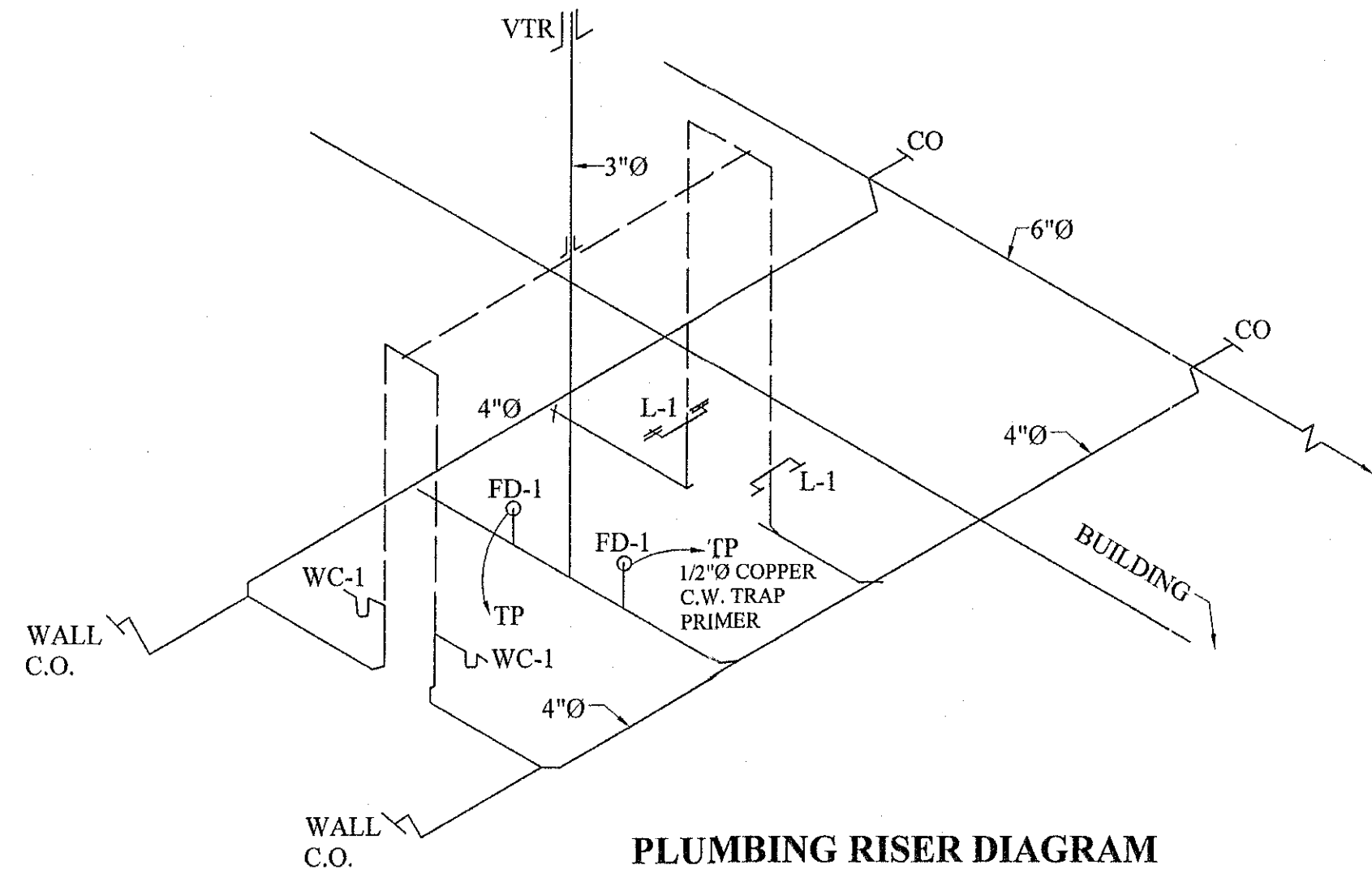


PLUMBING FIXTURE SCHEDULE

- L-1 LAVATORY (HANDICAPPED):**
ENAMELED CAST IRON LAVATORY WITH BACK AND SOAP DEPRESSION. 20"X18", CONCEALED WALL HANGER, COMBINATION SUPPLY FITTINGS WITH AERATOR, 4" FAUCET CENTERS, GRID DRAIN, ANGLE SUPPLIES WITH STOPS AND FLEXIBLE RISERS AND 1 1/2" CAST BRASS ADJUSTABLE P TRAP WITH CLEANOUT AND WASTE TO WALL. OUTFIT SHALL BE EQUAL TO KOHLER NO. K-2849 WITH NO. K-13354 TRIM, NO. K-7606 SUPPLIES AND NO. K-9000 TRAP. MOUNT AT HANDICAPPED MOUNTING HEIGHT. PROVIDE FULLY MOLDED TRUBRO. HAND LAVGUARD INSULATION KIT MODEL NO. 102 WATER AND DRAIN INSULATION BELOW LAVATORY. MOUNT AT HANDICAPPED MOUNTING HEIGHT.
- WC-1 WATER CLOSET (HANDICAPPED WATER CLOSET):**
LOW CONSUMPTION TANK TYPE, WHITE VITREOUS CHINA, 17 1/2" HIGH ELONGATED ACTIVE REVERSE TRAP BOWL, 2-BOLT CAPS CLOSE COUPLED FLUSH METER TANK 1.5 GPE, K-3544-T, CHROMED ANGLE STOP AND SUPPLY WITH ESCUTCHEON, K-7636, SOLID PLASTIC OPEN FRONT SEAT LESS COVER K-4652 (-A) LUSTRA, TANK WITH TRAP LEVER K-9436-R.
- HB-1 EXTERIOR WALL MOUNTED HOSE BIBB:**
EQUAL TO WOODFORD MODEL NO. B65, CAST BRASS, VACUUM BREAKER, HEAVY DUTY WALL HYDRANT WITH BRASS FINISH, RENEWABLE NYLON SEAT, 3/4" NPT HOSE OUTLET AND "T" HANDLE. FURNISH UNIT TO FIT EXISTING WALL THICKNESS. PROVIDE WITH KEY.
- HB-2 INTERIOR WALL MOUNTED HOSE BIBB:**
EQUAL TO WOODFORD MODEL 65 WITH STANDARD CHROME FINISH. HYDRANT SHALL BE ANTI-SIPHON, FREEZELESS TYPE. FURNISH UNIT TO FIT EXISTING WALL THICKNESS. PROVIDE WITH KEY.
- FD-1 FLOOR DRAIN WITH TRAP PRIMER:**
EQUAL TO JOSAM NO. 3003-5A, NO. 88303 ADAPTOR, AND NO. 88250-10 (3"), AUXILIARY INLET NO. 2696 WITH AUTOMATIC TRAP PRIMER NO. 2699, ZURN NO. Z415 WITH TYPE "B" STRAINER, TRAP PRIMER CONNECTOR NO. Z1023 AND SANIGARD PRIMER NO. Z1022. ALL EXPOSED PIPING TO BE CHROME PLATED.
- WH-1 WATER HEATER:**
AUTOMATIC, ELECTRIC, SIDE CONNECTED, STORAGE TYPE WATER HEATER. THE STORAGE TANK SHALL BE 10 GALLON CAPACITY, SHALL BE GLASS LINED STEEL, AND SHALL BE INSULATED AND JACKETED. UNIT SHALL BE PROVIDED WITH ASME RATE COMBINATION TEMPERATURE AND PRESSURE RELIEF VALVE. UNIT SHALL BE PROVIDED WITH 2000 WATT, 120 VOLT HEATING ELEMENT. UNIT SHALL BE U.L. TESTED AND LISTED. TANK SHALL BE PROVIDED WITH A REPLACEABLE MAGNESIUM ANODE ROD. HEATER SHALL BE EQUAL TO RHEEM 81VP10S-10 GALLON.

MISCELLANEOUS PLUMBING ITEMS:

- A. VB-1, VACUUM BREAKER:** INSTALL VACUUM BREAKER ON COLD WATER INLET TO WATER HEATER UNIT SHALL BE EQUAL TO WATTS 36A.
- B. WHA, WATER HAMMER ARRESTORS:** STAINLESS STEEL, BELLOWS/COMPRESSION CHAMBER TYPE, PER-CHARGED AND PERMANENTLY SEALED AT THE FACTORY, EQUAL TO SMITH'S HYDROTOL NO. 5005.
- C. INTERIOR FINISHED FLOOR CLEANOUT:** SERIES 58660 BY JOSAM LACQUERED CAST IRON, TWO PIECE BODY WITH DOUBLE DRAINAGE FLANGE, WEEP HOLES, REVERSIBLE CLAMPING COLLAR AND ADJUSTABLE NICKEL, BRONZE STRAINER ROUND WITH DEPRESSED COVER TO ACCEPT FLOOR FINISH IN FINISHED FLOOR AREAS.
- D. CLEANOUTS AND TEST TEES:** FLOOR CLEANOUTS SHALL BE JOSAM SERIES 58340, ZURN Z1425-3 OR APPROVED EQUAL. WALL CLEANOUTS SHALL BE JOSAM SERIES 58710, ZURN Z1440-1 OR APPROVED EQUAL. EXTERIOR CLEANOUTS SHALL BE JOSAM SERIES 58310, ZURN Z1420-27 OR APPROVED EQUAL, SET IN 15" X 15" X 6" CONCRETE PAD.
- E. VALVE BOXES:** EACH GATE VALVE SHALL BE PROVIDED WITH AN ADJUSTABLE, TWO-PIECE, CAST IRON VALE BOX OF A SIZE SUITABLE FOR THE VALVE. THE HEAD SHALL BE ROUND AND THE LID SHALL HAVE THE WORD "WATER" CAST ON IT. THE LEAST DIAMETER OF THE SHAFT OF THE BOX SHALL BE 5". EACH BOX SHALL BE GIVEN A HEAVY COAT OF BITUMINOUS PAINT AND SET IN AN 18" X 18" X 6" CONCRETE PAD.
- F. BP-1, BACKFLOW PREVENTER:** REDUCED PRESSURE EQUAL TO WATTS WITH AIR GAP AND STRAINER. PIPE DRAIN TO FLOOR DRAIN. EQUAL PRODUCTS BY FEBCO, HERSEY, ZURN.
- G. SHOCK ABSORBERS:** SHOCK ABSORBERS SHALL BE INSTALLED ON ALL HOT AND COLD WATER SUPPLIES NEAR THE FAUCET. SHOCK ABSORBERS SHALL BE EQUAL TO PRECISION PLUMBING PRODUCTS, INC. WITH SIZES AS RECOMMENDED BY MANUFACTURER.



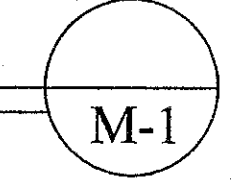
ALL UNDERGROUND SEWER AND WATER SUPPLY LINES SHALL CONFORM TO LOUISIANA STATE PLUMBING CODE, 2000 EDITION, AS NOTED:

- 608.3 SERVICE LINES DRAIN OR SEWER LINE**
EXCEPT AS PERMITTED IN 608.4, THE UNDERGROUND WATER SERVICE PIPE AND THE BUILDING DRAIN OR BUILDING SEWER SHALL BE NOT LESS THAN 5 FT (1524 MM) APART HORIZONTALLY AND SHALL BE SEPARATED BY UNDISTURBED OR COMPACTED EARTH.
- 608.4 PERMITTED INSTALLATION NEAR DRAIN OR SEWER LINE**
THE WATER SERVICE PIPE MAY BE PLACED IN THE SAME TRENCH WITH THE BUILDING DRAIN AND BUILDING SEWER PROVIDED THE FOLLOWING CONDITIONS ARE MET:
 1. THE BOTTOM OF THE WATER SERVICE PIPE, AT ALL POINTS, SHALL BE AT LEAST 12 INCHES (305 MM) ABOVE THE TOP OF THE SEWER LINE AT ITS HIGHEST POINT.
 2. THE WATER SERVICE PIPE SHALL BE PLACED ON A SOLID SHELF EXCAVATED AT ONE SIDE OF THE COMMON TRENCH.
 3. ANY UNDERGROUND WATER SERVICE PIPE WHICH MUST CROSS A PIPE THAT CONVEYS SEWAGE (E.G., BUILDING DRAINS, BUILDING SEWERS, AND OTHER PIPING CONVEYING SEWAGE) SHALL HAVE A MINIMUM VERTICAL SEPARATION OF 12 INCHES (305 MM) BETWEEN THE OUTSIDE OF THE SEWER PIPE. THE WATER SERVICE PIPE SHOULD ALWAYS BE INSTALLED ABOVE THE SEWER PIPE. AT CROSSING, ONE FULL LENGTH OF WATER PIPE SHALL BE LOCATED SO BOTH JOINTS WILL BE AS FAR FROM THE SEWER PIPE AS POSSIBLE.

REFER TO CIVIL DRAWINGS FOR LOCATION OF SEWER AND WATER CONNECTIONS.

FLOOR PLAN - PLUMBING

SCALE: 1/4" = 1'-0"



THESE DESIGN AND CONSTRUCTION DOCUMENTS AT THE SOLE PROPERTY OF JOSEPH F. SCHNEIDER, JR. AIA, ARCHITECT. NO USE OR REPRODUCTION OF THESE DOCUMENTS OR PARTIAL USE OR PARTIAL REPRODUCTION IS ALLOWED. NO USE OF THESE DRAWINGS WITHOUT THE WRITTEN EXPRESSED PERMISSION OF JOSEPH F. SCHNEIDER, JR. ARCHITECT IS ALLOWED.

REVISIONS	BY

TYLER STREET SHOPPING CENTER
58465 TYLER STREET
SLIDELL, LOUISIANA

JOSEPH F. SCHNEIDER JR., AIA
ARCHITECT
105 EVANGELINE DRIVE, SLIDELL, LOUISIANA 70460
(985) 847-0714
jfsarchitect@charter.net

DRAWN H. SCHNEIDER
CHECKED J. SCHNEIDER
DATE 02/01/06
SCALE 1/4" = 1'-0"
JOB NO. 0522
SHEET M-1
OF SHEETS