

HVAC SYMBOL SCHEDULE	
(T)	THERMOSTAT
(FD)	FIRE DAMPER
(F)	FIRESTAT
(SD)	DUCT SMOKE DETECTOR
CD	CEILING DIFFUSER (NECK SIZE)
O.A.	OUTSIDE AIR
RAG	RETURN AIR GRILLE
BDD	BACK DRAFT DAMPER
☒	SUPPLY AIR
☐	RETURN AIR
→	SUPPLY AIR WITH DIRECTION OF FLOW
⊥	SPIN-IN FITTING W/ DAMPER
~	FLEXIBLE DUCT
▭	RIGID SHEET METAL DUCT
⊞	RIGID ROUND SHEETMETAL DUCT
⊞	MANUAL VOLUME DAMPER (MVD)

**EXHAUST FAN SCHEDULE:**

**EF-1, 2** EQUAL TO BROAN NO. L150, 157 CFM, 1.5 SONES, 120V, 1.3 AMPS. PROVIDE 6" DIAMETER ROUND DUCT TO EXTERIOR WALL. PROVIDE WITH NO. 643 WALL CAP, BACK DRAFT DAMPER, INTEGRAL OVERLOAD PROTECTION, DISCONNECT. ALL EXHAUST DUCTWORK SHALL BE EXTERIOR APPLIED INSULATED.

**HVAC EQUIPMENT SCHEDULE:**

**HVAC UNIT NO. 1, 2, 3, 4, 5, 6, 7, & 8**

**INDOOR UNIT:** EQUAL TO YOUR ELECTRIC HEAT/COOL HORIZONTAL AIR HANDLER MODEL NO. NAHD020, 2,000 CFM, 208/230V, 3-PHASE - 60HZ. PROVIDE WITH 15 KW ELECTRIC HEAT STRIPS.

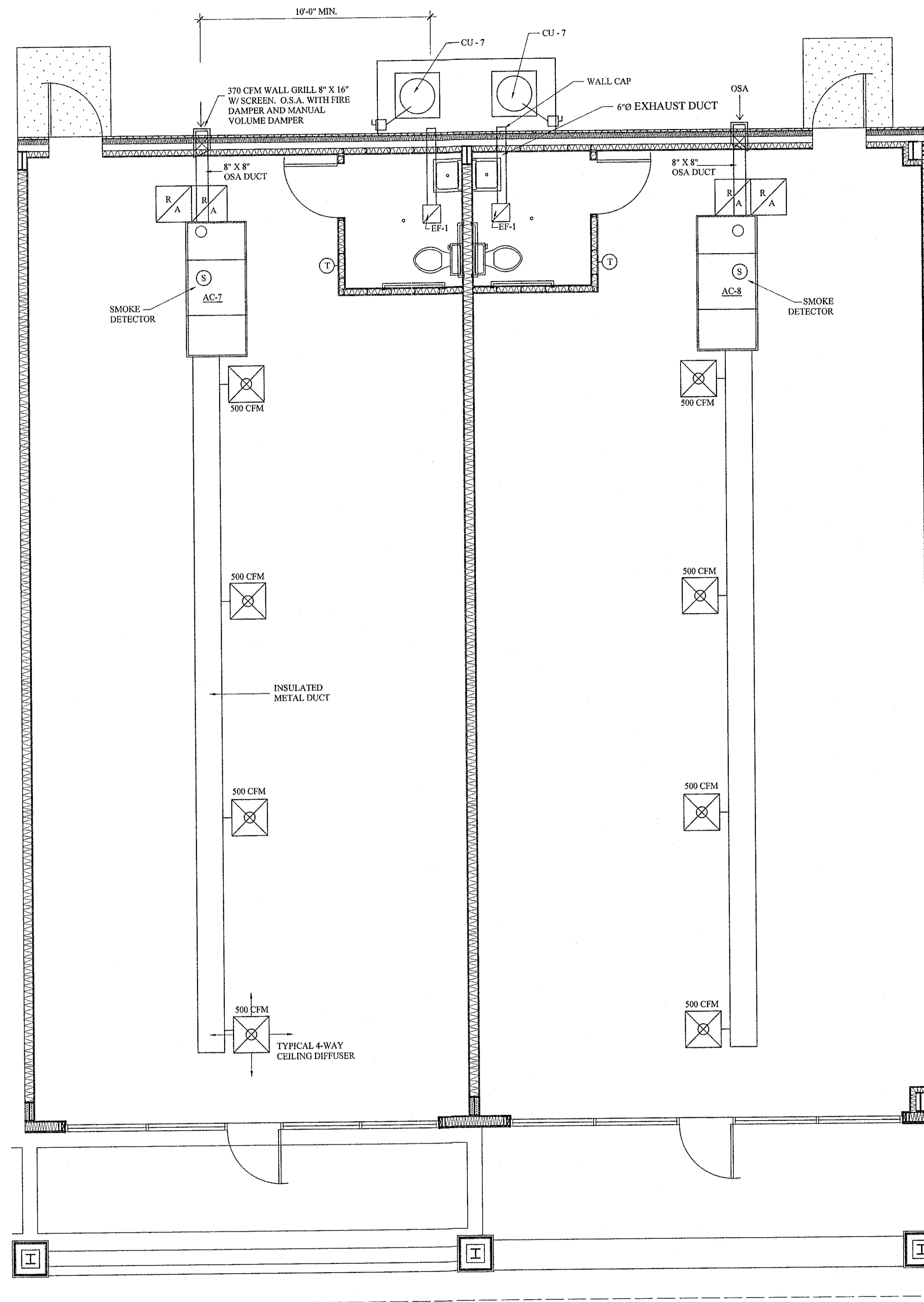
**COIL:** YORK FULL CASED MULTI-POSITIONED MODEL NO. GFD061H24 - 2,000 CFM, 5-TON AIR CONDITIONING.

**OUTDOOR UNIT:** YORK "OLYMPIAN" 12 SEER 208/230V, 3-PHASE, 60 HZ. MODEL NO. HIRC060S25, 12 SEER, 60,000 BTUH COOLING.

**THERMOSTAT:** EQUAL TO HONEYWELL NO. 2TH07700124 WITH CLEAR PLASTIC LOCKING C OVER.

**NOTE:**

1. PROVIDE UNITS 1-8 WITH METAL DRAIN PAN, OVERFLOW DRAIN, AND OVERFLOW PAN SWITCH TO SHUT-OFF UNIT IN EVENT OF CONDENSATION IN PAN.
2. PROVIDE UNIT WITH SMOKE DETECTOR FOR AUTOMATIC SHUTDOWN AS REQUIRED BY INTERNATIONAL MECHANICAL CODE AND NFPA 2003.
3. PROVIDE CONTROLS FOR ALL HVAC FAN TO RUN CONTINUOUSLY AFTER HEATING AND COOLING CYCLES. UNITS FANS TO RUN DURING "ON" AND "OFF" CYCLES TO MAINTAIN SPECIFIED OUTSIDE FRESH AIR INTAKE INTO THE UNITS.
4. PROVIDE ALL TESTING AND BALANCING REPORTS TO THE ARCHITECT UPON COMPLETION OF THE PROJECT.



**FLOOR PLAN - HVAC**

SCALE: 1/4" = 1'-0"

M-2

THESE DESIGN AND CONSTRUCTION DOCUMENTS AT THE SOLE PROPERTY OF JOSEPH F. SCHNEIDER, JR. AIA, ARCHITECT. NO USE OR REPRODUCTION OF THESE DOCUMENTS OR PARTIAL USE OR PARTIAL REPRODUCTION IS ALLOWED. NO USE OF THESE DRAWINGS WITHOUT THE WRITTEN EXPRESSED PERMISSION OF JOSEPH F. SCHNEIDER, JR. ARCHITECT IS ALLOWED.

REVISIONS	BY

**TYLER STREET SHOPPING CENTER**  
58465 TYLER STREET  
SLIDELL, LOUISIANA

**JOSEPH F. SCHNEIDER JR., AIA**  
ARCHITECT  
105 EVANGELINE DRIVE, SLIDELL, LOUISIANA 70460  
(985) 847-0714  
jfsarchitect@charter.net

DRAWN H. SCHNEIDER
CHECKED J. SCHNEIDER
DATE 02/01/06
SCALE 1/4" = 1'-0"
JOB NO. 0522
SHEET <b>M-2</b>
OF SHEETS