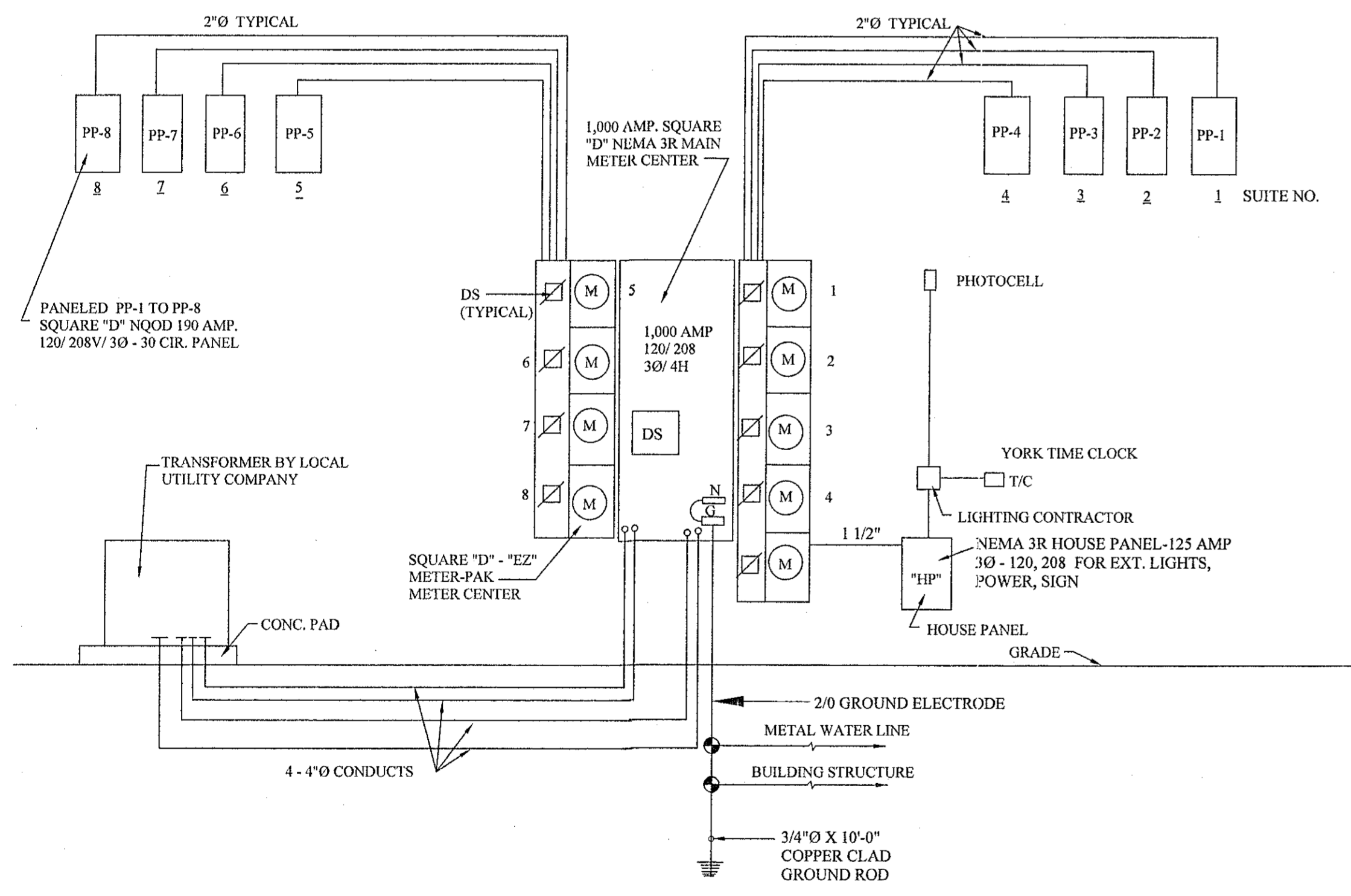
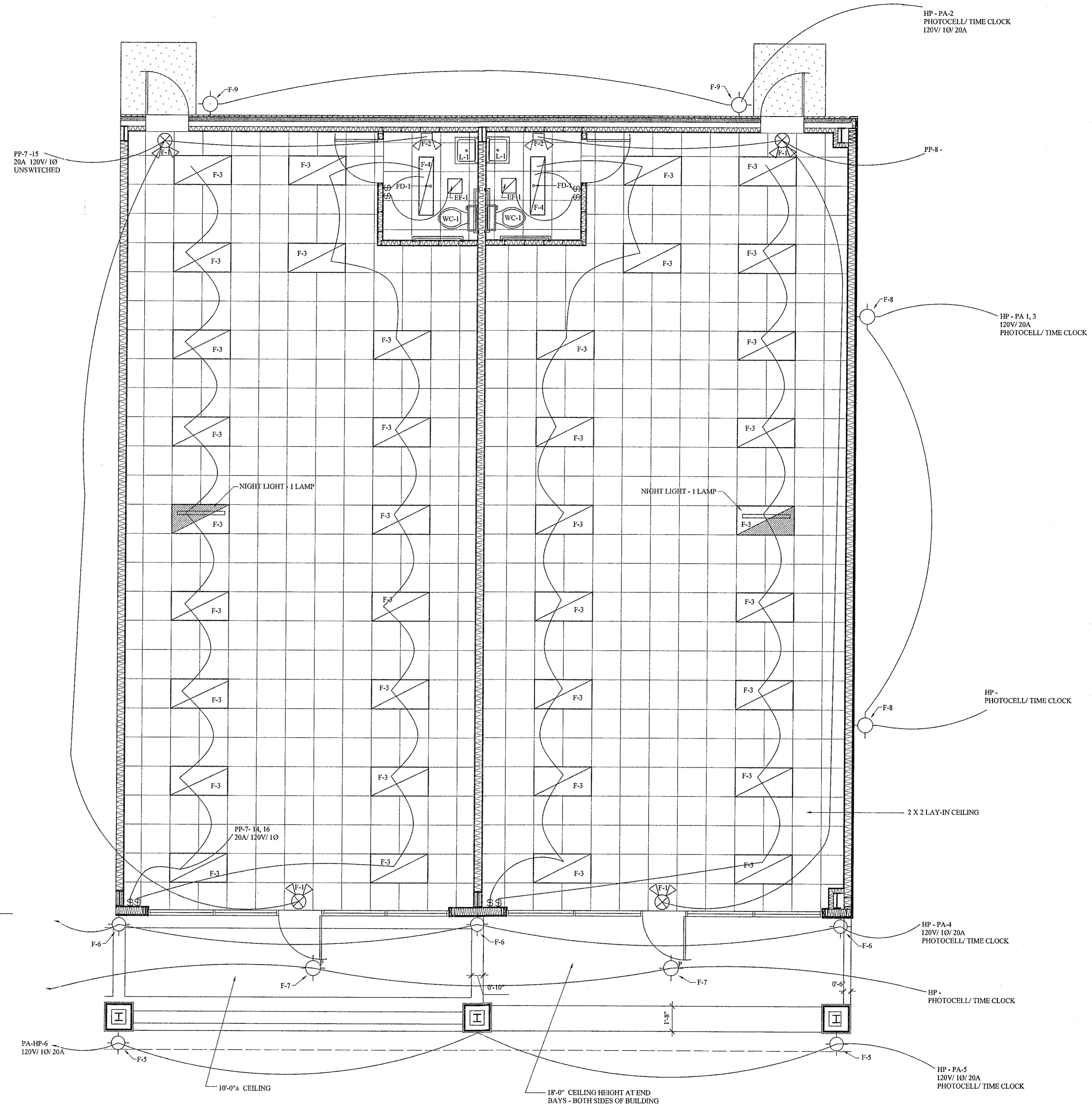


LIGHT FIXTURE SCHEDULE:

- F-1 EXIT / EMERGENCY LIGHT EQUAL TO LIGHTOLIER NO. LLCUGW - 120V.
- F-2 EMERGENCY LIGHT EQUAL TO LIGHTOLIER NO. E6W - 120V.
- F-3 2' X 4' LAY-IN FLUORESCENT TROFFER EQUAL TO LIGHTOLIER NO. SPS2GFSVA432-3-T8-EB-120V.
- F-4 2' X 4' SURFACE MOUNTED FLUORESCENT EQUAL TO LIGHTOLIER NO. SLB1SFSVA232-120022-T8-EB-120V.
- F-5 COLUMN MOUNTED ARCHITECTURAL LIGHT SELECTED BY OWNER - 120V.
- F-6 WALL MOUNTED ARCHITECTURAL LIGHT SELECTED BY OWNER - 120V.
- F-7 EXTERIOR PENDENT LIGHT FIXTURE SELECTED BY OWNER - 120V.
- F-8 SIDE WALL MOUNTED ARCHITECTURAL LIGHT SELECTED BY OWNER - 120V.
- F-9 EXTERIOR WALL MOUNTED SECURITY LIGHT EQUAL TO EXCELINE NO. "EXCALIBUR" XLW70HMA-1, 120V. 70-WATT METAL HALIDE.



ELECTRICAL RISER

FLOOR PLAN - LIGHTING

SCALE: 1/4" = 1'-0"

E-2

THESE DESIGN AND CONSTRUCTION DOCUMENTS AT THE SOLE PROPERTY OF JOSEPH F. SCHNEIDER, JR. AIA, ARCHITECT. NO USE OR REPRODUCTION OF THESE DOCUMENTS OR PARTIAL USE OR PARTIAL REPRODUCTION IS ALLOWED. NO USE OF THESE DRAWINGS WITHOUT THE WRITTEN EXPRESSED PERMISSION OF JOSEPH F. SCHNEIDER, JR. ARCHITECT IS ALLOWED.

REVISIONS	BY

TYLER STREET SHOPPING CENTER
58465 TYLER STREET
SLIDELL, LOUISIANA

JOSEPH F. SCHNEIDER JR., AIA
ARCHITECT
105 EVANGELINE DRIVE, SLIDELL, LOUISIANA 70460
(985) 847-0714
jfsarchitect@charter.net

DRAWN H. SCHNEIDER
CHECKED J. SCHNEIDER
DATE 02/01/06
SCALE 1/4" = 1'-0"
JOB NO. 0522
SHEET E-2
OF SHEETS

