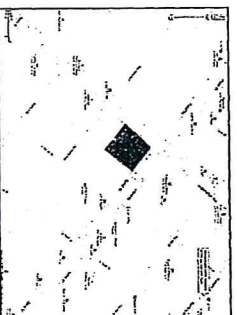


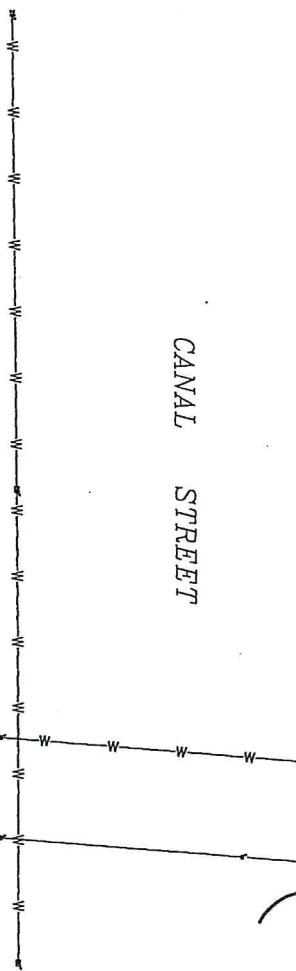
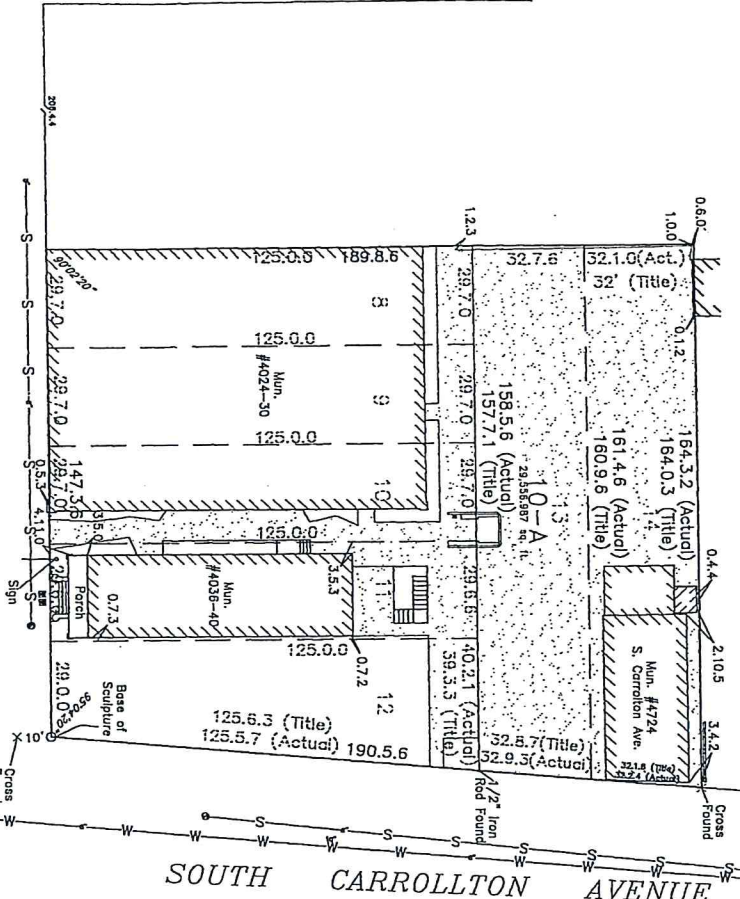
NOTICE:
THIS SUBDIVISION MUST BE
RECORDED WITH THE OFFICE
OF THE CLERK OF COURTY
WITHIN 30
DAYS OF APPROVAL.

ANY SEWER OR WATER HOUSE CONNECTIONS
NOT EXISTING SHALL BE THE RESPONSIBILITY
OF THE PROPERTY OWNER



SEWER HOUSE CONNECTION NOS.
#15924 (Mun. #4024-30 Canal St.)
#23248 (Mun. #4028 Canal St.)
#23249 (Mun. #4028 Canal St.)
#27248 (Mun. #4028-30 S. Carrollton Ave.)
#27249 (Mun. #4024 S. Carrollton Ave.)
WATER HOUSE CONNECTION NOS.
#40286 (Mun. #4024-30 Canal St.)
#40287 (Mun. #4028-40 Canal St.)
#402813 (Mun. #4028-30 S. Carrollton Ave.)
#402858 (Mun. #4028-30 S. Carrollton Ave.)
#404093 (Mun. #4024 S. Carrollton Ave.)

CLEVELAND AVENUE (SIDE)



NOTE:
Improvements may not be to scale
for clarity. The dimensions shown
prevail over scale.

NOTE:
Improvements may not be to scale
for clarity. The dimensions shown
prevail over scale.

ANGLE BASIS: CITY OF NEW ORLEANS
SQUARE MAPS BY D'HEMCOURT

RESUBDIVISION OF LOTS 8, 9, 10, 11, 12, 13 & 14 INTO LOT 10-A SQUARE 756 FIRST DISTRICT CITY OF NEW ORLEANS ORLEANS PARISH, LOUISIANA		DADING, MARQUES & ASSOCIATES, LLC		THIS SURVEY MEETS THE MINIMUM REQUIREMENTS FOR A CLASS "C" SURVEY ACCORDING TO THE LOUISIANA MINIMUM STANDARDS FOR PROPERTY BOUNDARY SURVEYS."	
I CERTIFY THAT THIS SURVEY AND PLAT WAS PREPARED BY ME OR BY THOSE UNDER MY DIRECT SUPERVISION. MADE AT THE REQUEST OF: CSC INVESTMENTS, LLC		RICHARD T. DADING REG. NO. 4399 REGISTERED PROFESSIONAL SURVEYOR		P.O. BOX 790 METAIRIE, LA. 70004 (504) 834-0200	
DATE:	SCALE:	DRAWN BY:	CHECKED BY:	JOB NO.:	PLAT No.:
1-26-2017	1" = 40'	B.D.	R.T.D.	55299	M-2874