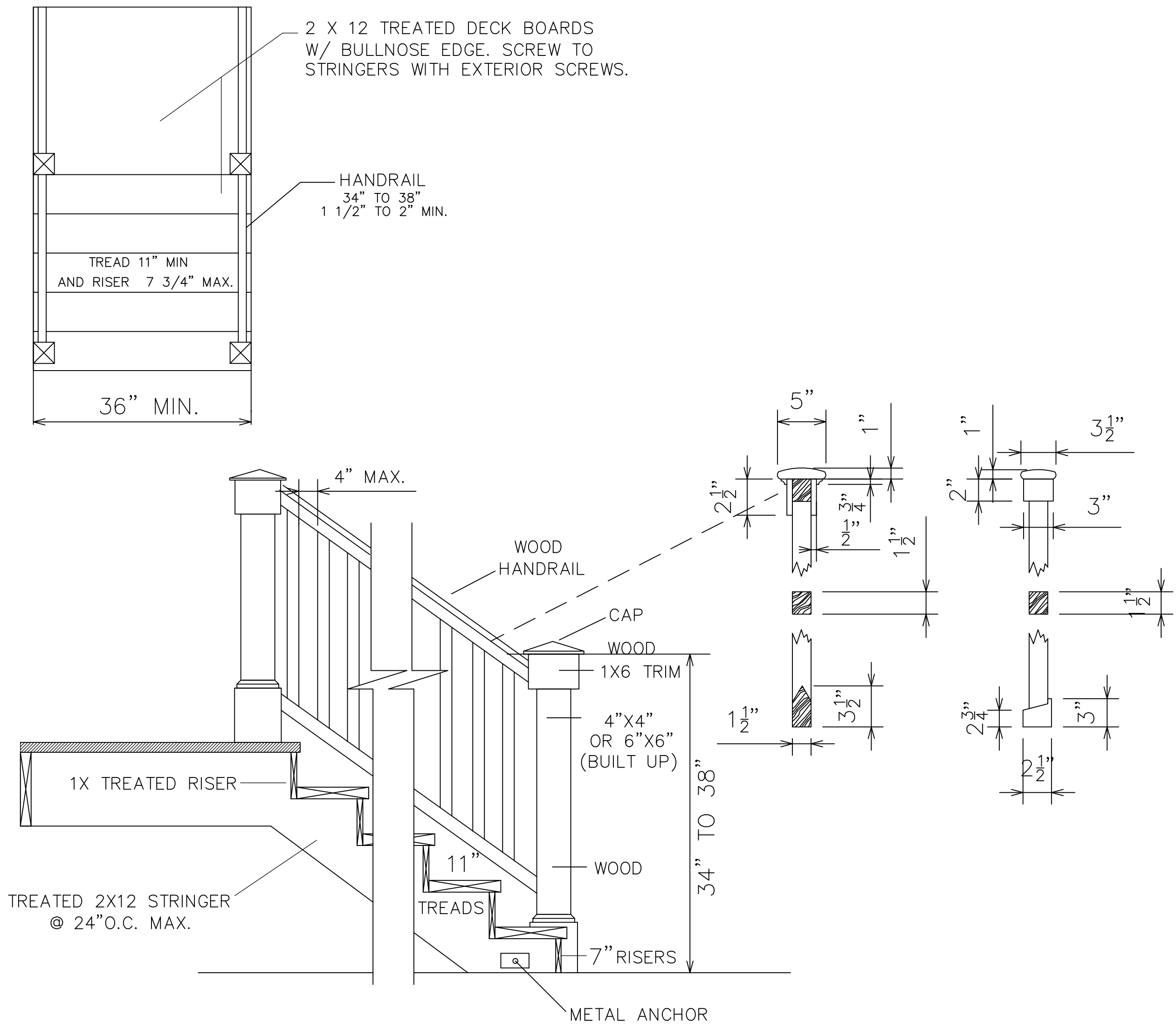


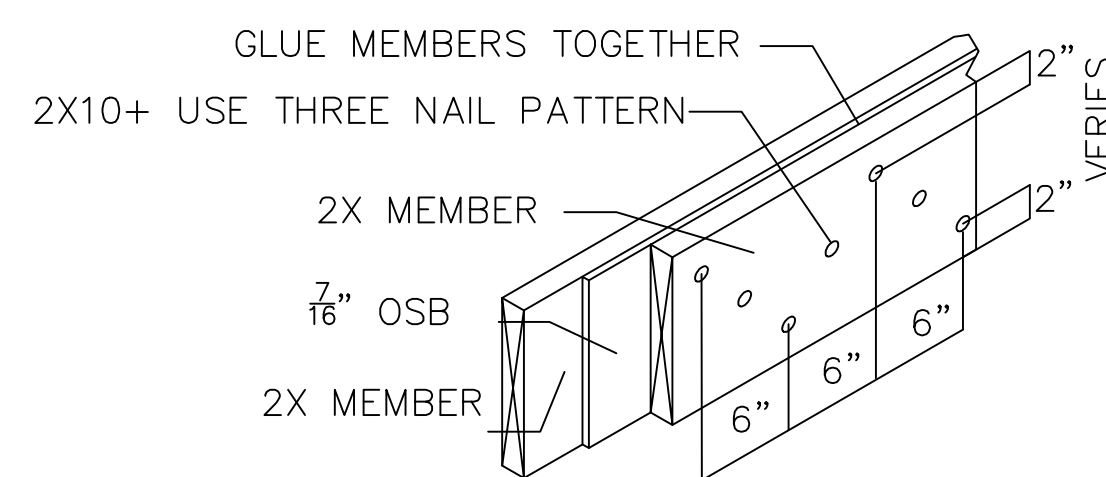
DESIGN WIND LOADS ARE BASED ON A 120 MPH BASIC WIND SPEED (3 SEC GUST), IMPORTANCE FACTOR =1.0, EXPOSURE B. WIND LOADS FOR ENGINEERED PRODUCTS SHALL BE IBC2012 WIND SPEED MAPS & TABLES.



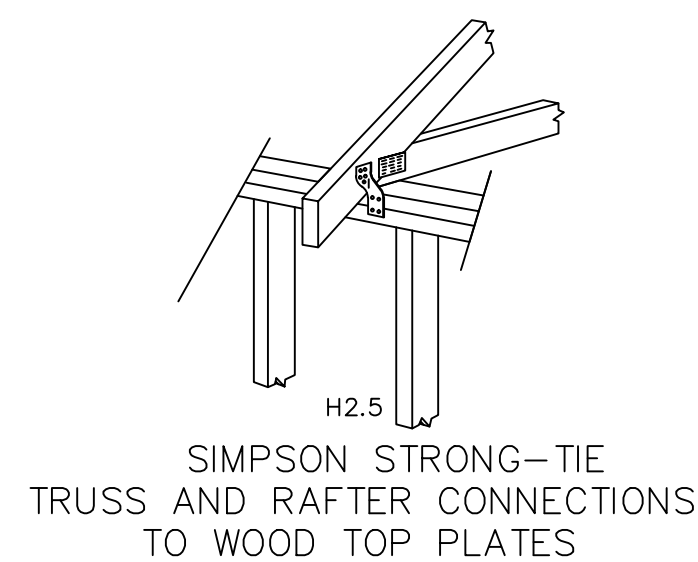
WOOD STAIR DETAIL

NOTES:

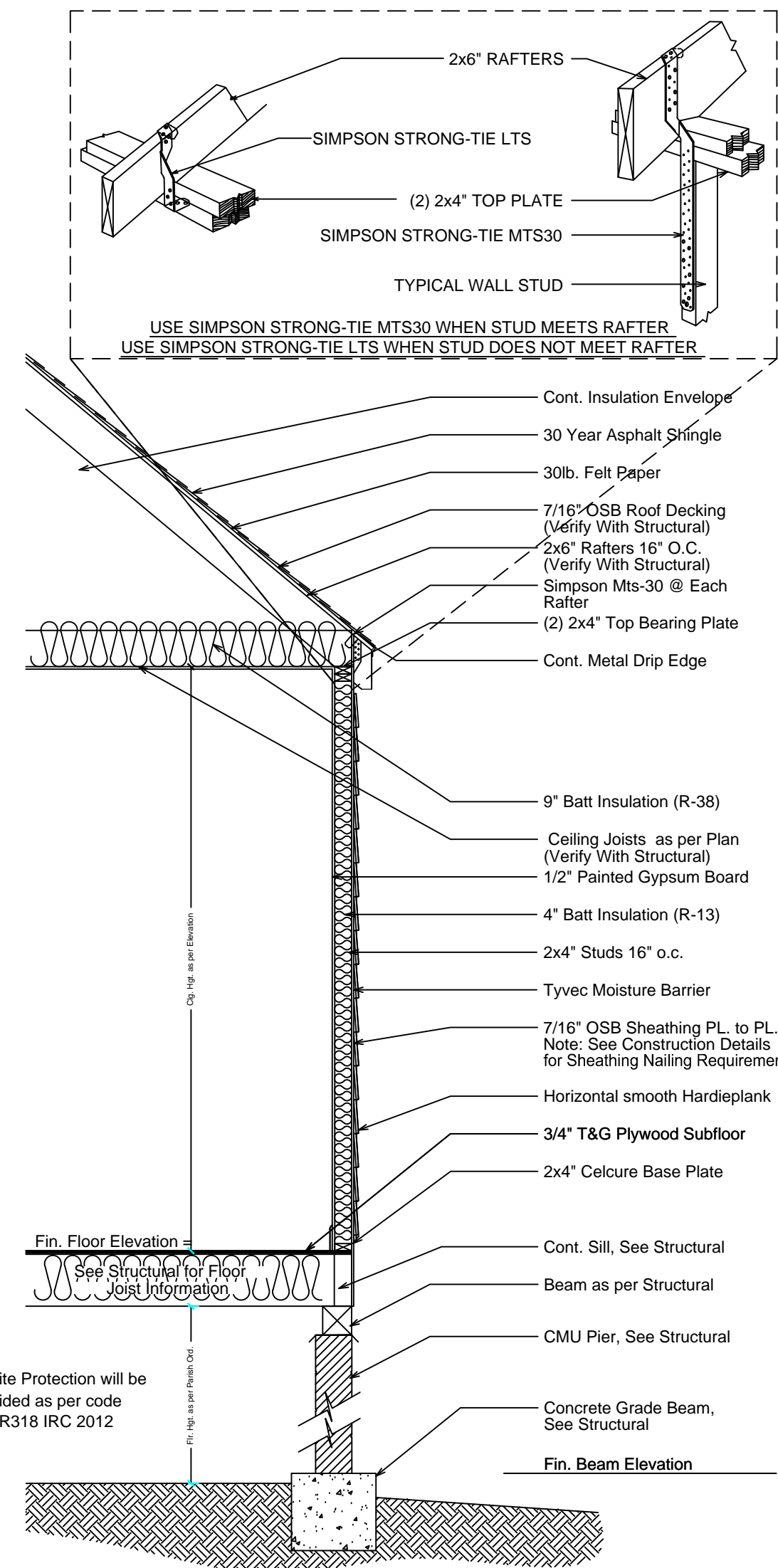
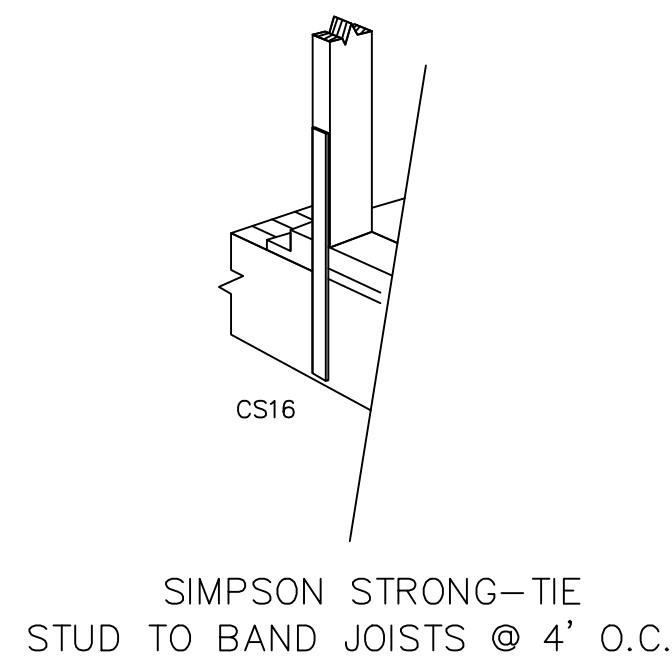
- LANDING AT TOP AND BOTTOM OF ALL STAIRWAYS EXCEPT, AT TOP OF INTERIOR STAIRWAY, INCLUDING AN ENCLOSED GARAGE. PROVIDED DOOR SWINGS OUT.
- NO VERTICAL RISE IN A STAIRCASE MORE THAN 12'-0" W/O A LANDING
- ALL LANDINGS SHALL BE SAME WIDTH OF STAIRS, AND A MIN. OF 36".
- MAX LESS THAN 4" SPACING BETWEEN BALUSTERS.
- ENCLOSED ACCESSIBLE SPACE UNDER STAIRS SHALL HAVE WALL, UNDER-STAIR SURFACE AND ANY SOFFITS PROTECTED ON THE ENCLOSED SIDE WITH 1/2" (12.7MM) GYPSUM BOARD AS PER SECTION R302.7 OF THE IRC 2012 ED.



BUILT UP BEAM



SIMPSON STRONG-TIE



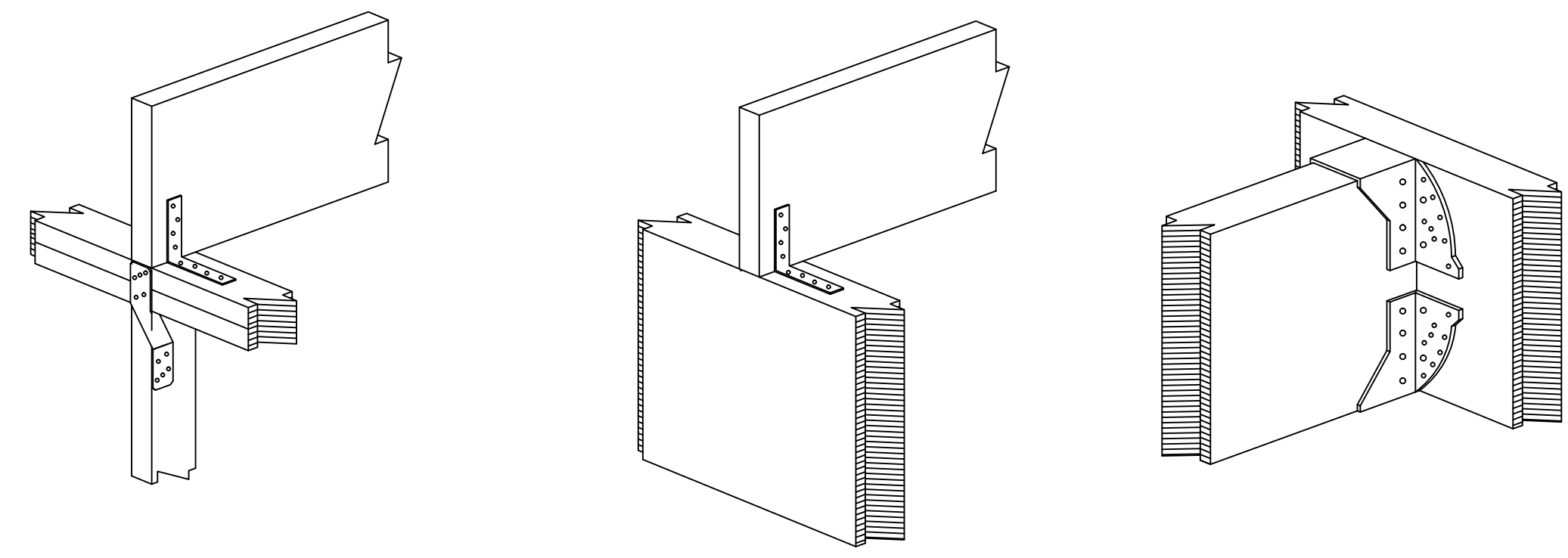
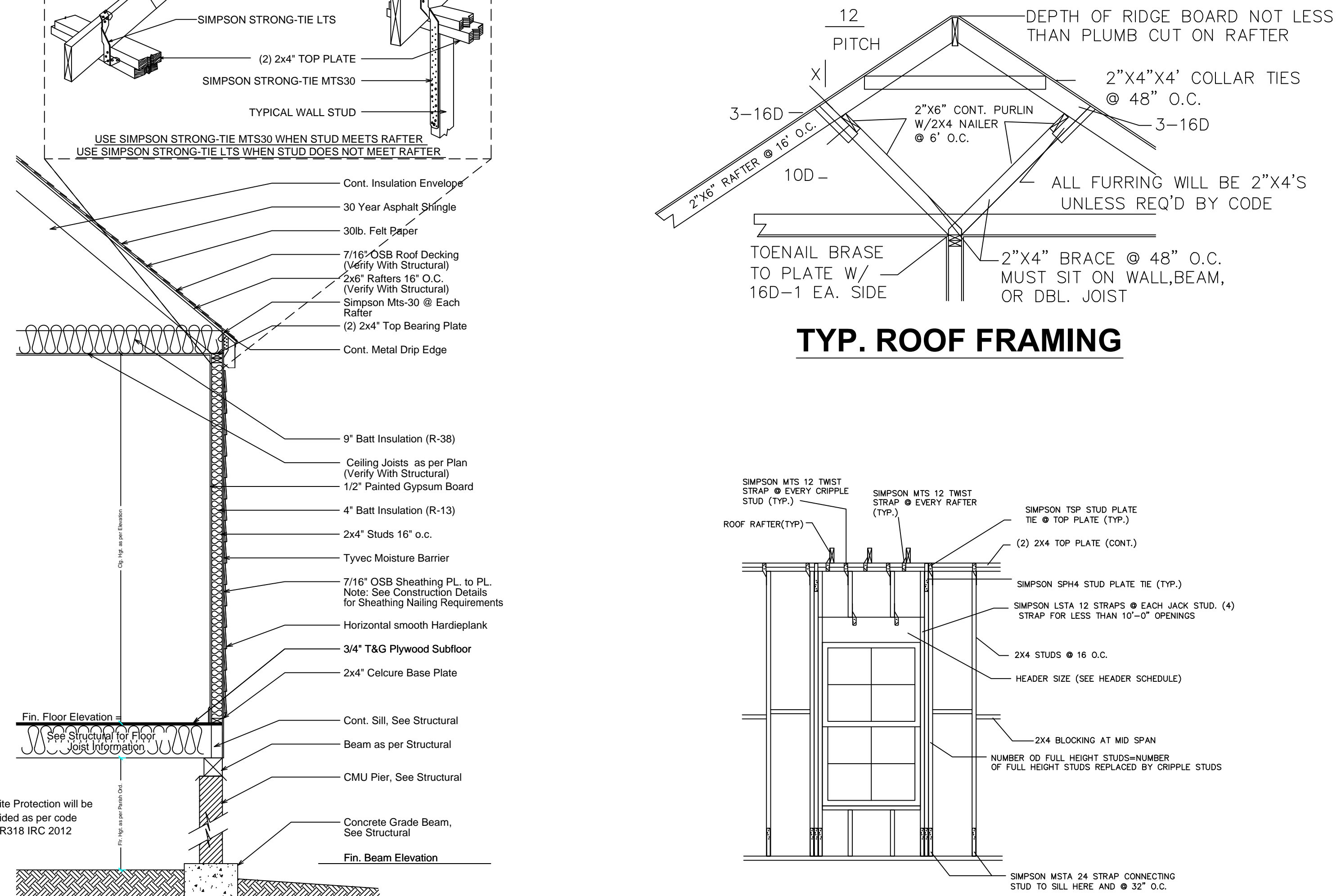
TYP. WALL SECTION

FLOOR JOIST TO TOP PLATES
UPLIFT CONNECTOR
SIMPSON # A44
4 NAILS - 10d X 1 1/2" JOIST
4 NAILS - 10d X 1 1/2" PLATE

FLOOR JOIST TO FLOOR BEAM
UPLIFT CONNECTOR
SIMPSON # A44
4 NAILS - 10d X 1 1/2" JOIST
4 NAILS - 10d X 1 1/2" BEAM

FLOOR JOIST DETAILS

FLOOR BEAM TO FLOOR BEAM
UPLIFT CONNECTOR
SIMPSON # HGUSS6-2
8 NAILS - 16d X 3" BEAM
20 NAILS - 16d X 3" BEAM



Christal Dupuy
697 Haley Ave.-70458
St. Tammany Parish, La

THESE PLANS HAVE BEEN PREPARED
UNDER MY DIRECT SUPERVISION
AND
TO THE BEST OF MY KNOWLEDGE
COMPLY WITH THE INTERNATIONAL
BUILDING CODE.

STAMP:

DATE: 3.6.2015

SHEET:

A.4