

EXISTING DITCH TO BE FILLED WITH EXCAVATED MATERIAL  
 VOLUME OF OPEN DITCH = 4212 C.F. = 156 C.Y.  
 VOLUME OF OPEN DITCH MINUS PIPE AND INLETS = 145 C.Y.

REMAINING AREA TO BE FILLED TO MEET  
 PROPOSED CONCRETE ELEVATIONS  
 VOLUME OF FILL NEEDED = 97 C.Y.

EXISTING DITCH SHALL BE STRAIGHTENED AND MADE WIDER  
 TO PROVIDE FILL FOR NEW CONCRETE ELEVATIONS  
 AREA OF EXCAVATION = 2105 S.F.  
 AVERAGE DEPTH OF EXCAVATION = 1 FT.  
 VOLUME OF EXCAVATION TO BE USED AS FILL = 2105 C.F. = 78 C.Y.

**2.531 ACRES**  
 (110,240 SQ. FT.)

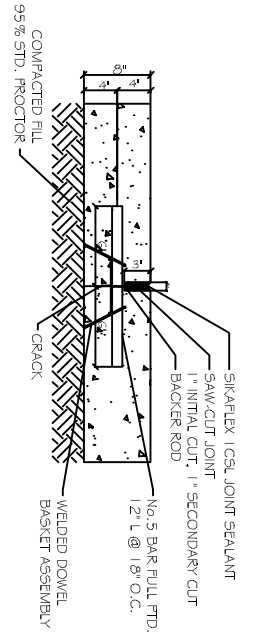
**EAST 506.96'**  
 CONCRETE PAVING PLAN  
 SCALE: 1" = 30'

- DRAINAGE PLAN NOTES:**
- ELEVATIONS SHOWN ARE M.S.L.
  - DRAIN PIPE SHALL BE 12"x18" RCPA
  - FIELD VERIFY ALL ELEVATIONS AND DRAINAGE SYSTEM PLACEMENT PRIOR TO START OF WORK FOR PROPER DRAINAGE FLOW.

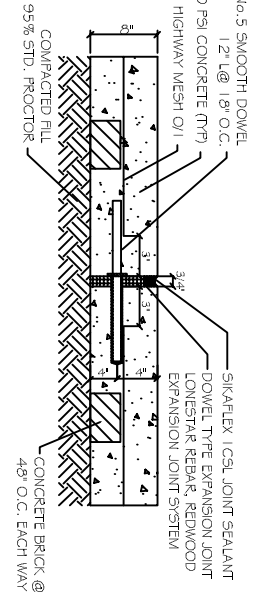
**PAVING NOTES:**

- ALL NEW CONCRETE SHALL HAVE A MINIMUM COMPRESSIVE STRENGTH OF 4,000 PSI AT 28 DAYS AND A MINIMUM THICKNESS OF 8" CONCRETE MIX SHALL BE IN ACCORDANCE WITH THE LATEST REVISION OF ASTM C-150 TYPE 1.
- CONCRETE PAVING THICKNESS SHALL VARY AS FOLLOWS:
  - DRIVEWAYS = 8" THICKNESS
  - ALL REINFORCING STEEL SHALL MEET ASTM A615 GRADE 60I.
  - BOTH VERTICAL AND HORIZONTAL MOVEMENT DURING CONCRETE FACEDMENT ALL CONTROL AND EXPANSION JOINTS SHALL BE LOCATED AND INSTALLED AS SHOWN ON THE PAVING PLAN AND IN ACCORDANCE WITH THE MANUFACTURER'S RECOMMENDATIONS.
  - ALL SUB GRADE FILL SHALL BE SELECT GRANULAR MATERIAL COMPACTED TO 95% STANDARD PROCTOR DENSITY IN A MAXIMUM OF 6" LIFTS.
  - CONTRACTOR SHALL CONTACT THEIR REGULATORY DEPARTMENT OF ENGINEERING PRIOR TO CONDUCTING ANY WORK.
  - ANY WORK WITHIN THE ROADWAY OR ADJACENT TO THE ROADWAY CAUSING AN INTERFERENCE TO VEHICULAR TRAFFIC MUST CONFORM TO THE REQUIREMENTS SET FORTH BY THE UNIFORM MANUAL OF TRAFFIC CONTROL DEVICES OF THE STATE OF LOUISIANA. THE CONTRACTOR MUST FURNISH ALL NECESSARY TRAFFIC SIGNS AND/OR BARRICADES AND MAINTAIN THEM DURING CONSTRUCTION ACTIVITY.

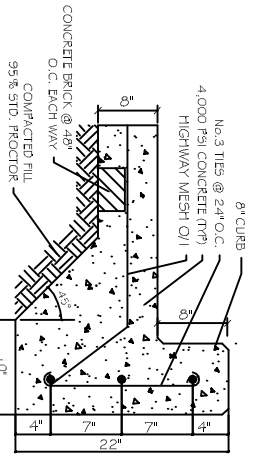
**CONTROL JOINT DETAIL**  
 N.T.S.



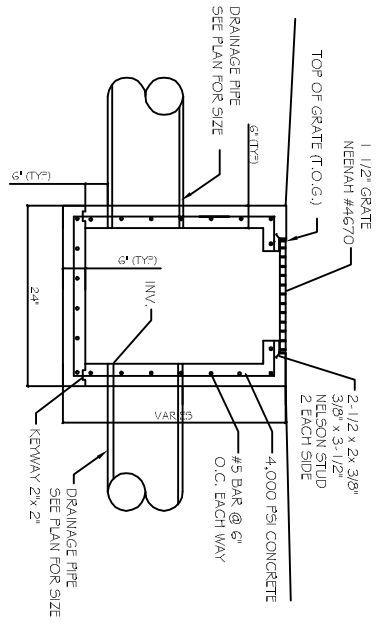
**EXPANSION JOINT DETAIL**  
 N.T.S.



**TYPICAL CURB DETAIL**  
 N.T.S.



**TYPICAL DROP INLET**  
 N.T.S.



**LEGEND**

- PROPERTY LINE
- CONTROL JT.
- EXPANSION JT.
- ⊙ 0.00' - TOP OF GRATE ELEVATION
- ⊙ 0.00' - INVERT ELEVATION
- 0.00' - NEW ELEVATION
- TOP OF CURB
- BOTTOM OF CURB
- TOP OF BANK

REVISIONS	
#	DESCRIPTION

**B. & W. TRUCKING INC.**  
 130 INDUSTRIAL PARK  
 SUDELL, LA  
 70458

JOB No: \_\_\_\_\_ DATE: 09-19-2012  
 DRAWN BY: CKD CHECKED BY: CKD

**DAMMON ENGINEERING, INC.**  
*Architects & Engineers*

CHIEF ENGINEER: EMMETT DAMMON, P.E.  
 CHIEF ARCHITECT: ROBERT WILTSE  
 554 OLD SPANISH TRAIL  
 SUDELL, LA 70458

dammonengr@att.net  
 PHONE: 905-649-5032  
 FAX: 905-641-5950