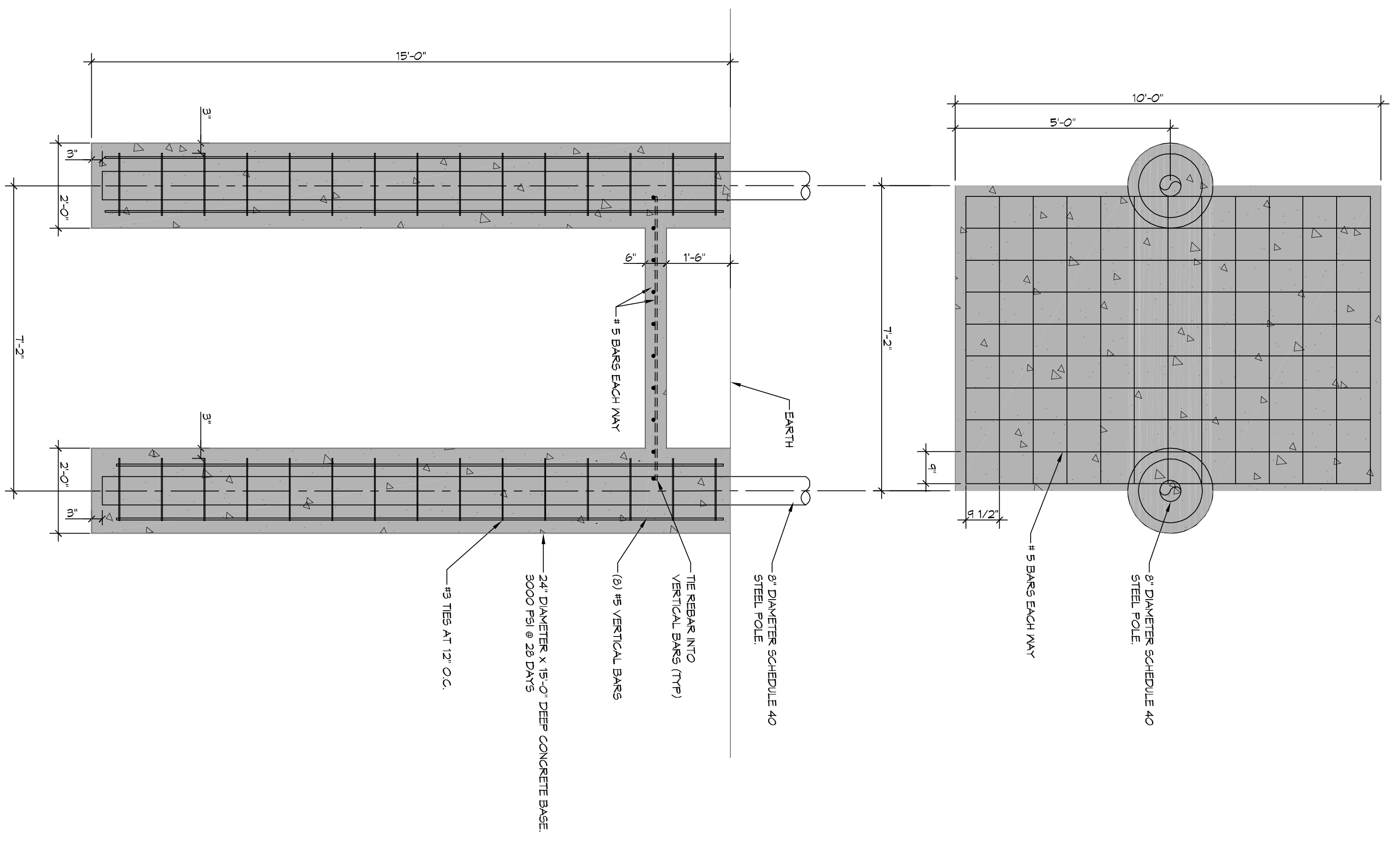


1  
5101

FOUNDATION PLAN

SCALE: 1/2" = 1'-0"

FOUNDATION



- FOUNDATION NOTES**
1. ALL DIMENSIONS ARE EDGE OF CONCRETE (EOC) TO EDGE OF CONCRETE (EOC) UNLESS NOTED OTHERWISE.
  2. CONCRETE MIX SHALL HAVE A MINIMUM COMPRESSIVE STRENGTH OF 3000 PSI AT 28 DAYS. CONCRETE MIX SHALL BE IN ACCORDANCE WITH AC-308.
  3. ALL CONVENTIONAL REINFORCING STEEL SHALL MEET ASTM-A615 (GRADE 60).
  4. ALL REINFORCING STEEL AND MESH SHALL BE SECURELY SUPPORTED TO PREVENT BOTH VERTICAL AND HORIZONTAL MOVEMENT DURING CONCRETE PLACEMENT.
  5. THE CONTRACTOR SHALL VERIFY ALL DROPS, OFFSETS, BRICK LEDGES, DIMENSIONS AND CONFIGURATIONS. CONTRACTOR WILL BE RESPONSIBLE FOR SAME.



554 Old Spanish Trail  
Slidell, LA 70458  
PH: 985.649.5832  
www.dammonengineering.com  
info@dammonengineering.com  
Fax: 985.641.5950

REVISIONS		DATE
#	DESCRIPTION	



**LOUISIANA DENTAL CENTER**

5434 N. MAIN ST.  
HOUMA, LA 70360

JOB No:      SIGN      DATE:      05-03-17

DRAWN BY:      CKD      CHECKED BY:      BAM

I hereby certify that the design, specifications, drawings and calculations represented hereby are true and correct to the best of my knowledge and belief, and that I am a duly Licensed Professional Engineer in the State of Louisiana. I am not providing any services in connection with any work or project other than the specific project for which the seal has been prepared and displayed on this drawing. I will comply with the provisions of the Louisiana Professional Engineering Act, R.S. 378. I will not engage in any activity that would constitute a conflict of interest. I will not engage in any activity that would constitute a violation of the Louisiana Professional Engineering Act, R.S. 378. I will not engage in any activity that would constitute a violation of the Louisiana Professional Engineering Act, R.S. 378.

SHEET TITLE:  
FOUNDATION PLAN

DRAWING NUMBER:  
**S101**

SHEET No: 1 OF 1