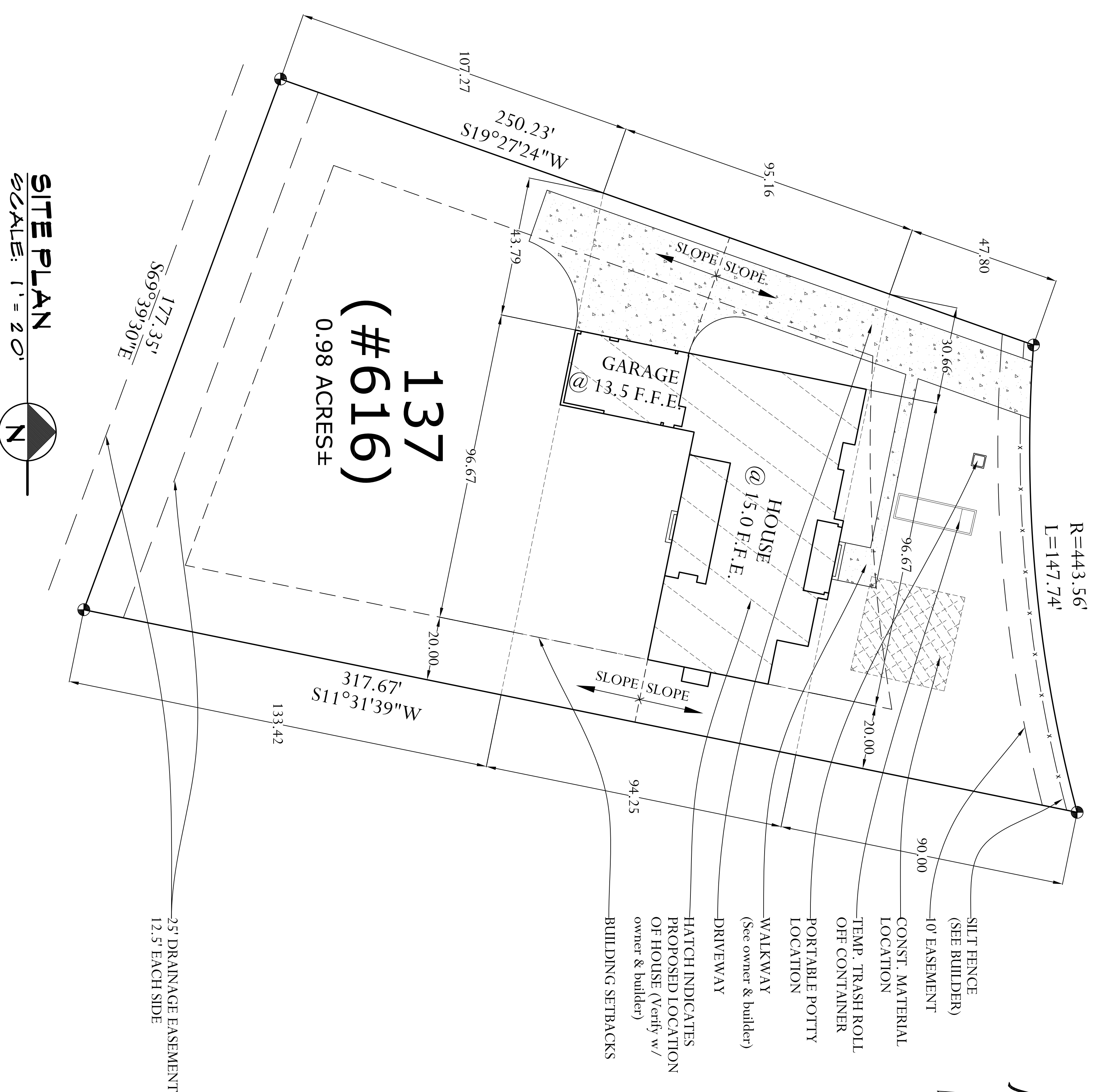
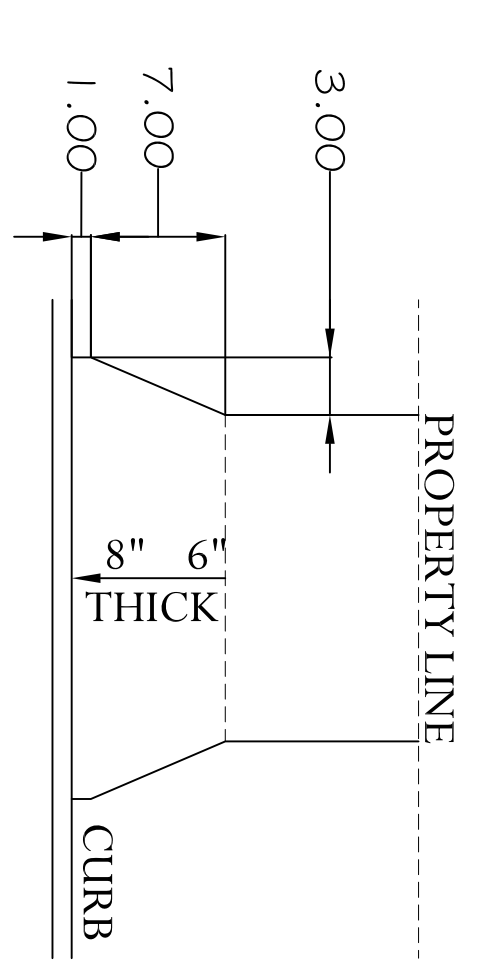
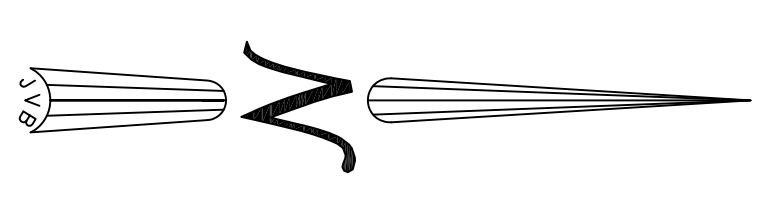
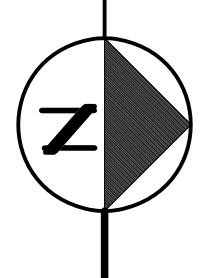


616 PEARL VIEW CT

R=443.56'
L=147.74'

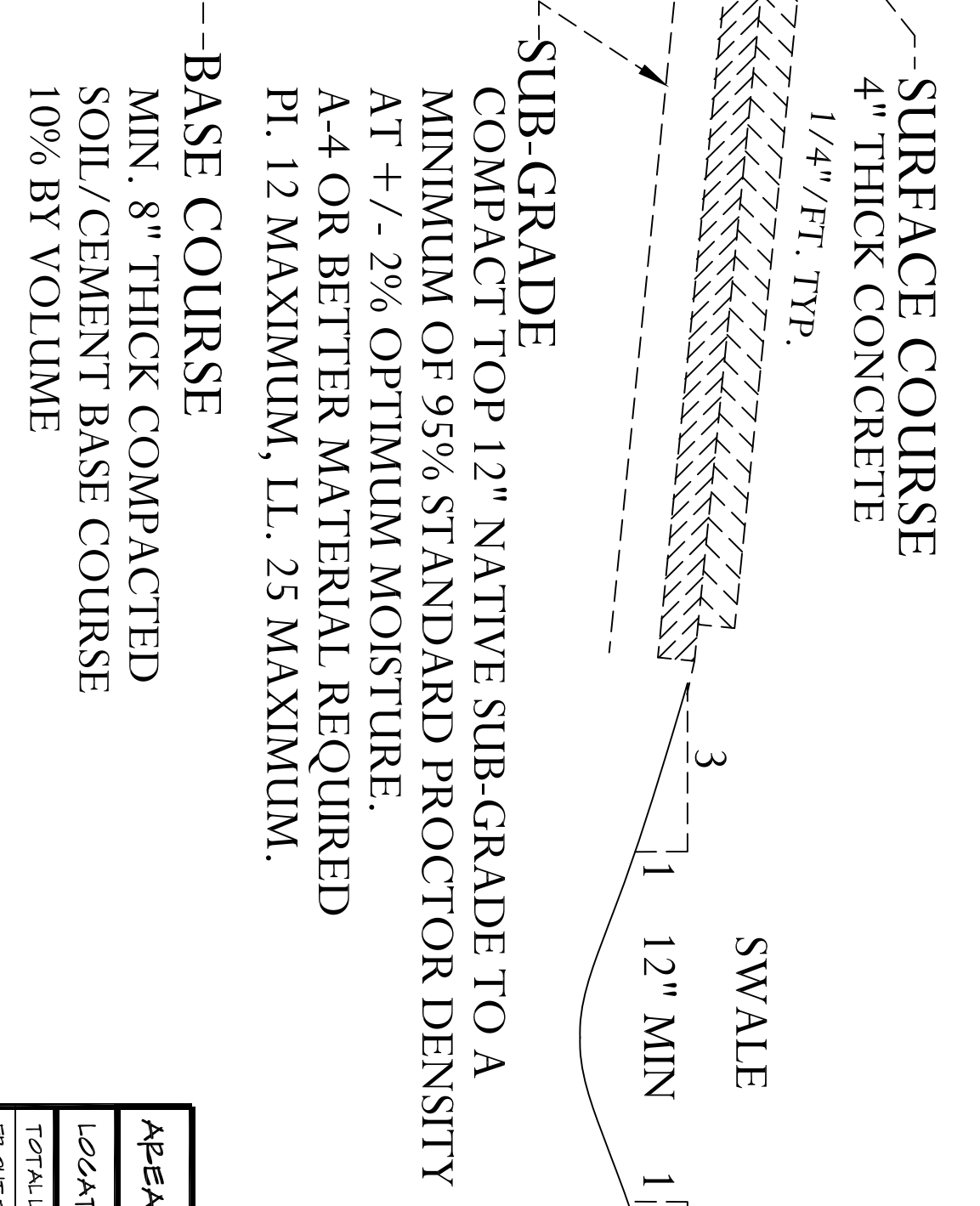


SITE PLAN
SCALE: 1" = 20'



DRIVEWAY APRON

N.T.S.



DRIVEWAY SECTION

N.T.S.

AREA	SQUARE FOOTAGE
LOCATION	6'-F
TOTAL LIVING	4000
PAINT ENTRY	100
VERANDA	490
SHED GARAGE	890
TWO CAR GARAGE	590
TOTAL INSIDE AREA	5690
TOTAL SQUARE FEET	5699

REFERENCE:
DRAWING FILE PROVIDED BY OWNER
FLOOD ZONE (Survey verify) INDICATES 1/2" IRON ROD

BUILDING SETBACKS :
(* Verify prior to any construction)
FRONT.....50'
SIDE.....20'
REAR.....25'
SIDE STREET.....**

NOTE:
This being only a Site Plan any Property Lines, Setbacks Lines, Servitudes, Easements, Flood zones, & Wind zones shall be VERIFIED with Surveying Co. by Owner or Contractor Prior to Any Kind of Construction, as an Abstract or Site Work has not been Performed by MACALUSO HOME DESIGNS, INC.

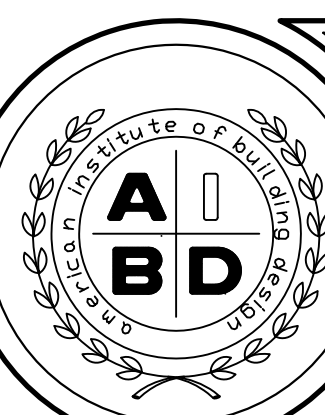
BASIC REFERENCE NOTES AS PER DESIGN CRITERIA
The design criteria shall be in accordance with:
2015 (IRC) International Residential Code
2015 (WFCM) Wood Frame Construction Manual for one and two family dwellings with (AF & PA) The American Forest and Paper Association.
(ASCE) American Society of Civil Engineers 7-05 METHOD 1

WIND SPEED (3 SEC. GUST)	130 M.P.H.
EXPOSURE:	B
STRUCTURE TYPE:	ENCLOSED

*CONTRACTOR IS RESPONSIBLE FOR VERIFYING & COMPLIING WITH CODES.

INDEX OF DRAWINGS

SHEET	DRAWING NAME	REVISED
A0.0	GENERAL SHEET & SITE PLAN	
A0.1	FORM PLAN	
A1.0	FLOOR PLAN	
A1.1	NOTES, SCHEDULES & CAB ELEVATIONS	
A2.0	FRONT & REAR ELEVATIONS	
A2.1	LEFT & RIGHT ELEVATIONS	
A2.2	ROOF PLAN	
A2.3	FRAMING DETAILS	
E1.0	ELECTRICAL PLAN	

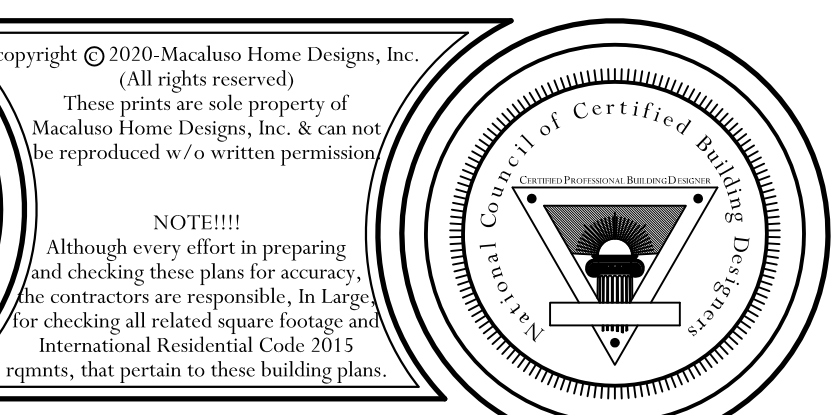


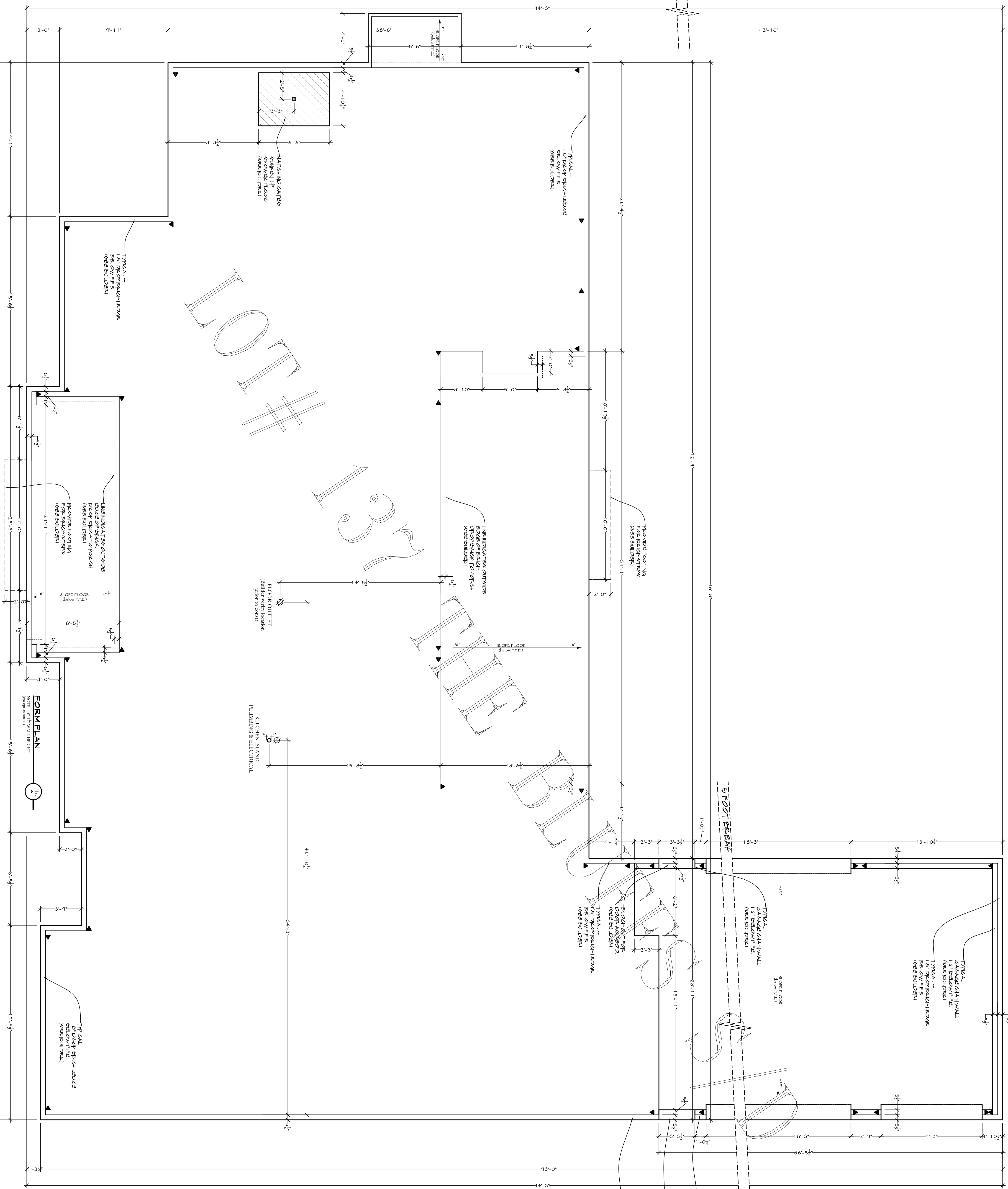
MARK A. MACALUSO
REGISTERED PROFESSIONAL ENGINEER
STATE OF LOUISIANA
NO. 12088
EXPIRES 12/31/2024

DATE: 09/17/2020
CORREY & JILL BUCK
LOT # 137 (616 PEARL VIEW CT) THE BLUFFS S/D
GENERAL SHEET & SITE PLAN
PLAN NUMBER: 20-44072

MACALUSO
home designs, inc.
www.macaluso.homedesigns.com
204 Village Circle • Suite 2 • Slidell, Louisiana 70458
P: (985)641-7168
F: (985)641-1859

Copyright © 2020 Macaluso Home Designs, Inc. (All rights reserved).
These prints are sole property of Macaluso Home Designs, Inc. & can not be reproduced w/o written permission.
NOTE!!!!
Although every effort in preparing and checking these plans for accuracy, the contractor is responsible. In large for checking all related square footage and International Residential Code 2015 reports, that pertain to these building plans.





SILL OR BOTTOM PLATE TO FOUNDATION CONNECTIONS RESISTING SHEAR LOADS
 1 90mph WINDS EXPOSURE B

FOUNDATION ANCHORAGE--
 5/8" X 10" @ 32" O.C. ANCHOR BOLTS
 (Start 12" or less from end of plates)
 HOLD-DOWNS--
 5/8" DIAM. x 4" HDU
 5/8" DIAM. x 12" HDU

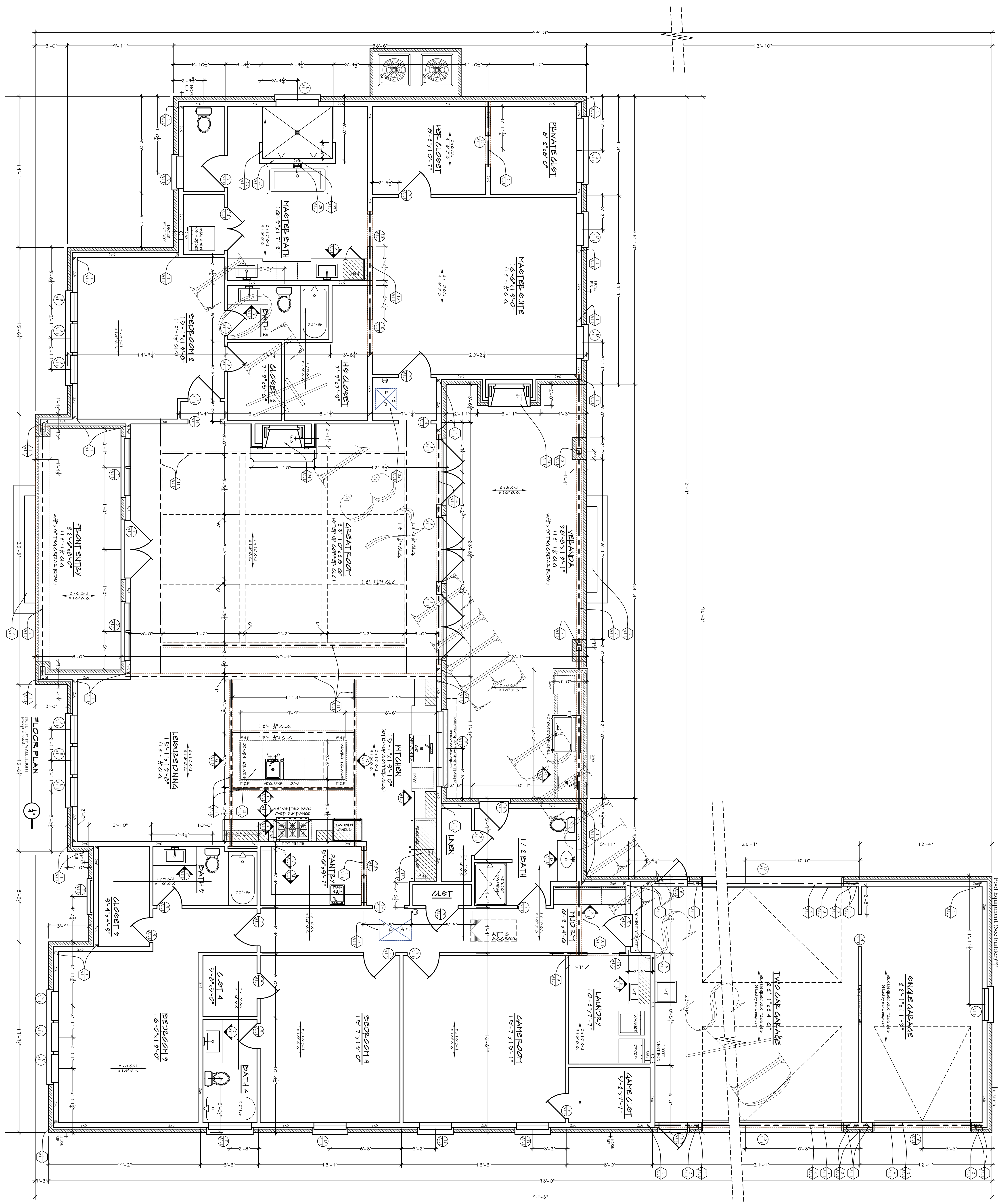
MARK A. SANKOFF
 REGISTERED PROFESSIONAL ENGINEER
 STATE OF LOUISIANA
 LICENSE NO. 104672

COREY & JILL BUCK
 LOT # 137 (616 PEARL VIEW CT) THE BLUFFS S/D
FORM PLAN
 DATE: 09/17/2020
 PLAN NUMBER: 204072

MACALUSO
 home designs, inc.
 www.macalusahomedesigns.com
 204 Village Circle + Suite 2 + Slidell, Louisiana 70458
 P: (985)641-7168
 F: (985)641-1859

copyright © 2020 Macaluso Home Designs, Inc.
 (All rights reserved)
 These prints are sole property of Macaluso Home Designs, Inc. & can not be reproduced w/o written permission.

NOTE!!!!
 Although every effort in preparing and checking these plans for accuracy, the contractor are responsible. In large for checking all related square footage and International Residential Code 2015 reports, that pertain to these building plans.



FLOOR PLAN

NOTE: (W) = WALL HEIGHT (COVERED AREAS)

SHEET A1.0

MARK A. D'AMICO

 REGISTERED PROFESSIONAL ENGINEER

 LICENSE NO. 100462

COREY & JILL BUCK

 LOT # 197 (610 PEARL VIEW CT) THE BLUFFS @ D

 DATE: 08/17/2020

 PLAN NUMBER: 2014022

FLOOR PLAN

MACALUSO

 home designs, inc.

 www.macaluso-homedesigns.com

 204 Village Circle • Suite 2 • Slidell, Louisiana 70458

copyright © 2020 Macaluso Home Designs, Inc.

 (All rights reserved)

 These prints are sole property of Macaluso Home Designs, Inc. & can not be reproduced w/o written permission.

 NOTE!!!

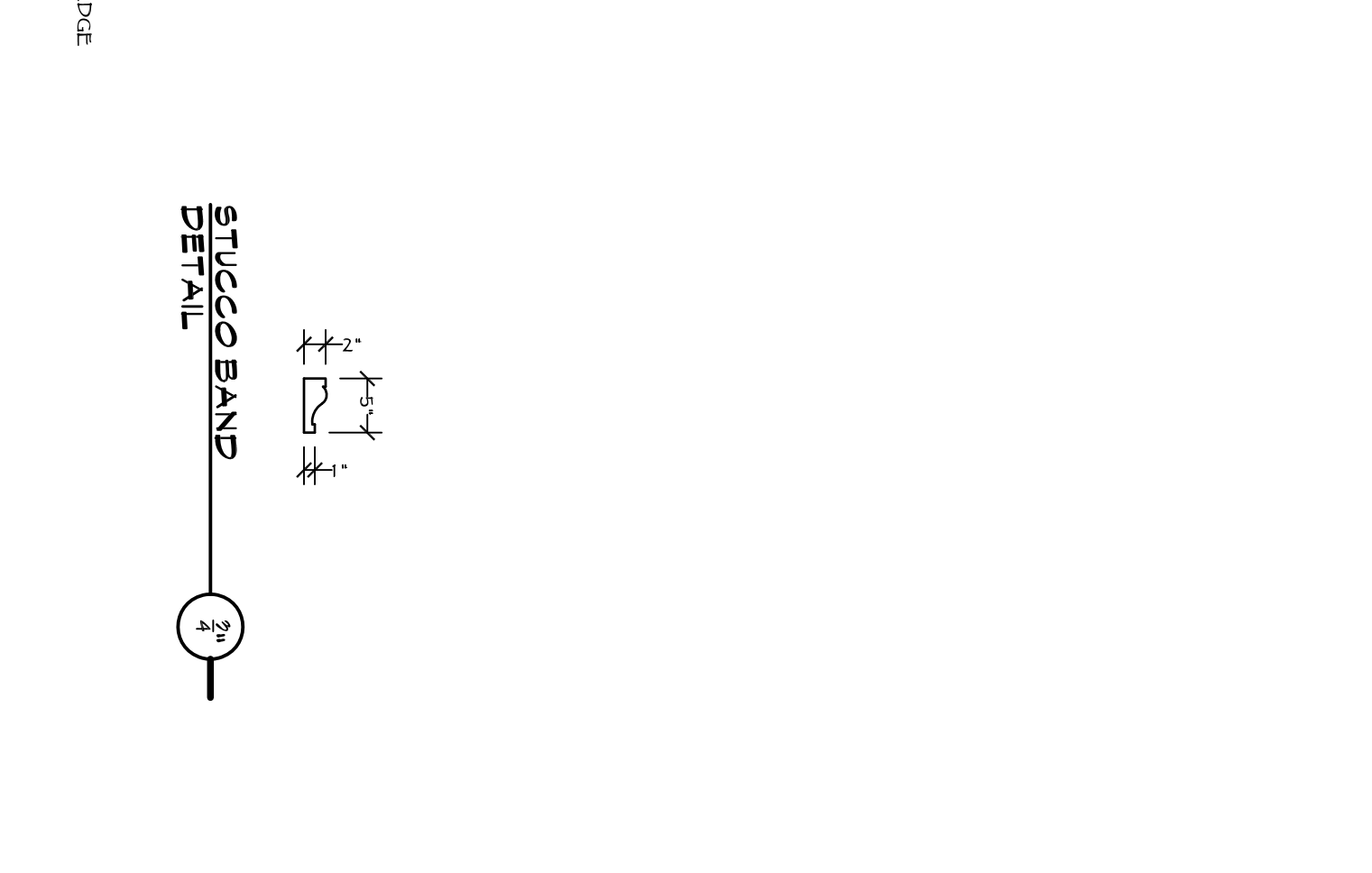
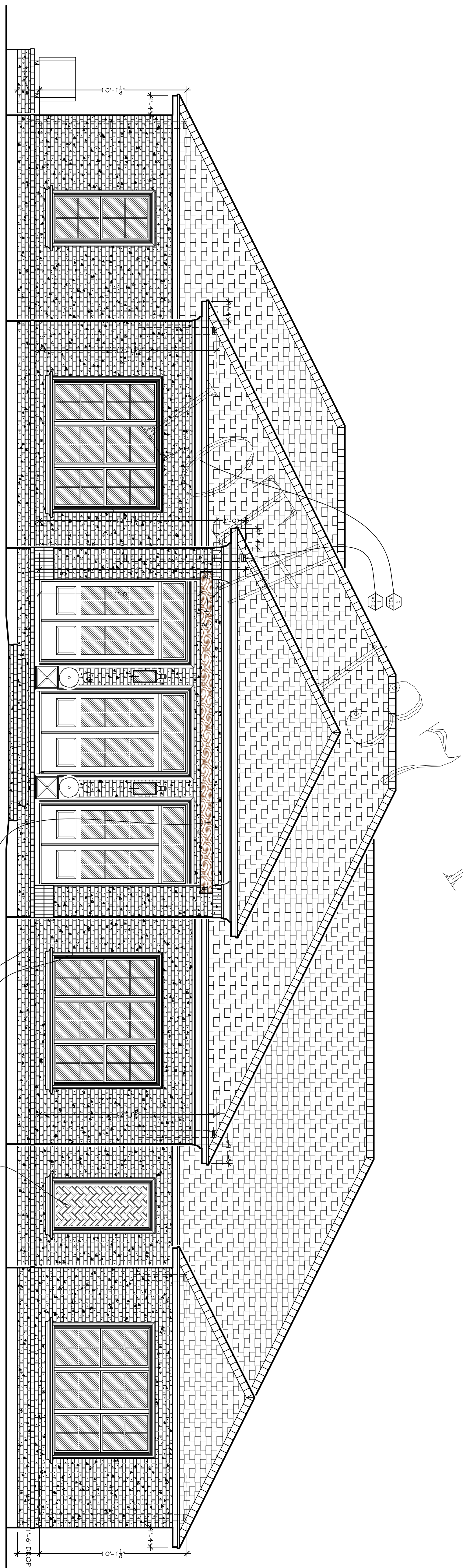
 Although every effort in preparing and checking these plans for accuracy, the contractors are responsible. In large for checking all related square footage and International Residential Code 2015 reports, that pertain to these building plans.

NATIONAL COUNCIL OF CERTIFIED BUILDING DESIGNERS

ELEVATION NOTES	
1	INTER WALL ABOVE FINISH BRICKWORK AREAS
2	OPEN END W/ BRICKWORK AREAS
3	W/OUT 1/2" x 1/4" BRICK REINFORCEMENT (SEE 10.0.5.0.1)
4	TYPICAL W/ BRICKWORK AREAS
5	OPEN END BRICKWORK AREAS
6	OPEN END BRICKWORK AREAS
7	BRICK OUT BRICKWORK AREAS
8	PAINTED BRICKWORK AREAS
9	1/2" x 1/4" BRICK REINFORCEMENT (SEE 10.0.5.0.1)
10	1/2" x 1/4" BRICK REINFORCEMENT (SEE 10.0.5.0.1)
11	1/2" x 1/4" BRICK REINFORCEMENT (SEE 10.0.5.0.1)

MINIBOARD DEBRIS PROTECTION FASTENING SCHEDULE FOR MOOD STRUCTURAL PANELS			
FASTENER TYPE	FASTENER SPACING		
	4 FOOT PANEL & 6 FOOT	4 FOOT PANEL & 6 FOOT	5 FOOT PANEL & 6 FOOT
2-1/2" #6 MD SCREWS	16"	12"	9"
2-1/2" #8 MD SCREWS	16"	16"	12"

POOF NOTES:
 --PROVIDE GUTTER, DOWNSPOUTS & SUB-SUFACE DRAINAGE AS REQD.
 --PROVIDE TECH-SHIELD 3" POOF DECK (RADIANT BARRIER)
 --SEE OTHER GENERAL NOTES 10-10 ON SHEET A.1.1
 --ALL BRICK TO BE PAINTED AS REQD (MASONRY PRIMER & PAINT)
 VERIFY W/ OWNER



Copyright © 2020 Macaluso Home Designs, Inc. All rights reserved. These prints are sole property of Macaluso Home Designs, Inc. and can not be reproduced w/o written permission.

NOTE!!!! Although every effort in preparing and checking these plans for accuracy, the contractor are responsible. In large for checking all related square footage and International Residential Code 2015 reports, that pertain to these building plans.

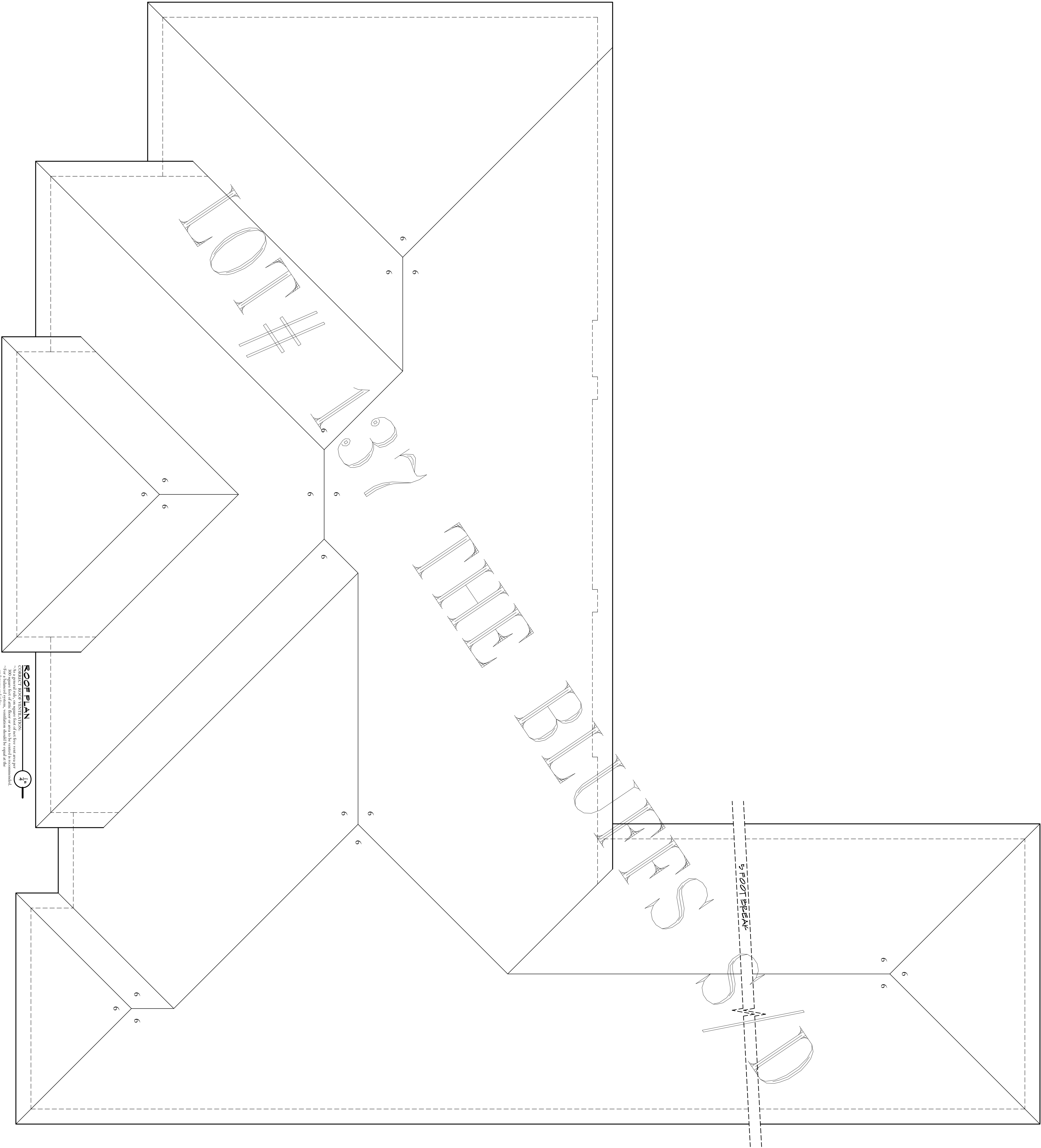
MACALUSO
 home designs, inc.

www.macalusahomedesigns.com P: (985)641-7168
 204 Village Circle • Suite 2 • Slidell, Louisiana 70458 F: (985)641-1859

COREY & JILL BUCK
 LOT # 137 (616 PEARL VIEW CT) THE BLUFFS S/D

DATE: 09/17/2020
FRONT & REAR ELEVATIONS

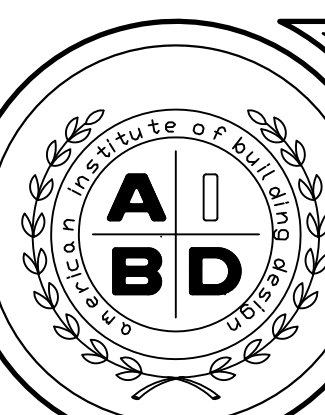
PLAN NUMBER: 20-1072



ROOF PLAN

1/1

CORRECT TOP VENTILATION must be provided for all roof areas.
 300 square feet of attic floor or more to be vented to recommended
 manufacturer's specifications. Ventilation should be equal at the
 intake and outlet.
 -For a mechanical system, slope provided must be 1/4" per foot of the
 run.
 -For a mechanical system, slope provided must be 1/4" per foot of the
 run.
 at the upper portion of the roof.



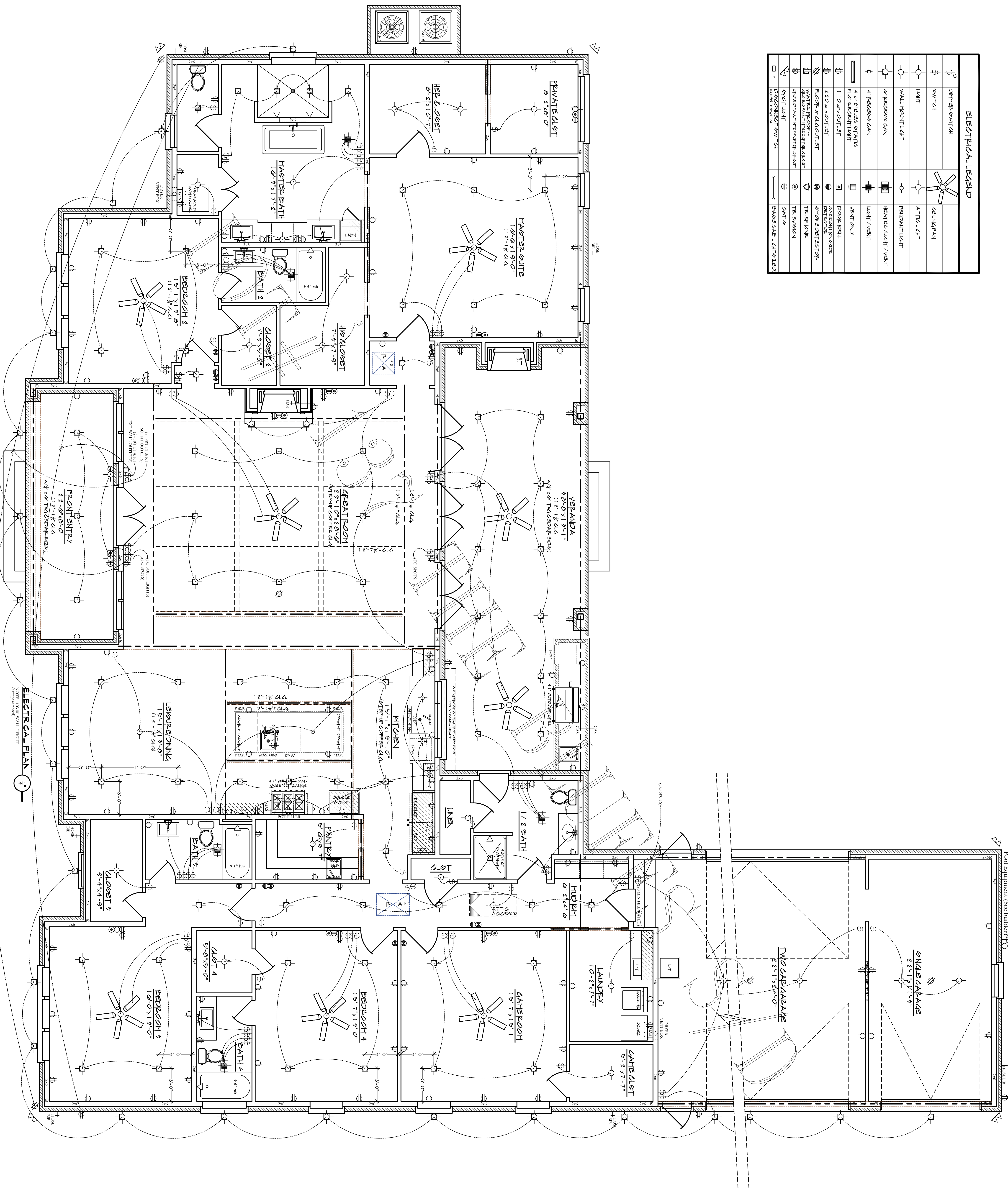
COREY & JILL BUCK
 LOT # 137 (616 PEARL VIEW CT) THE BLUFFS S/D
 DATE: 09/17/2020
ROOF PLAN
 PLAN NUMBER:
 20-0072

MACALUSO
 home designs, inc.
 www.macalushomedesigns.com
 204 Village Circle • Suite 2 • Slidell, Louisiana 70458
 P: (985)641-7168
 F: (985)641-1859

copyright © 2020 Macaluso Home Designs, Inc.
 (All rights reserved)
 These prints are sole property of
 Macaluso Home Designs, Inc. & can not
 be reproduced w/o written permission.
 NOTE!!!!
 Although every effort in preparing
 and checking these plans for accuracy,
 the contractor are responsible. In large
 for checking all related square footage and
 International Residential Code 2015
 reports, that pertain to these building plans.



ELECTRICAL LEGEND	
⊕	120V 15A SWITCH
⊕	120V 20A SWITCH
⊕	120V 30A SWITCH
⊕	120V 40A SWITCH
⊕	120V 50A SWITCH
⊕	120V 60A SWITCH
⊕	120V 75A SWITCH
⊕	120V 100A SWITCH
⊕	120V 150A SWITCH
⊕	120V 200A SWITCH
⊕	120V 250A SWITCH
⊕	120V 300A SWITCH
⊕	120V 350A SWITCH
⊕	120V 400A SWITCH
⊕	120V 450A SWITCH
⊕	120V 500A SWITCH
⊕	120V 550A SWITCH
⊕	120V 600A SWITCH
⊕	120V 650A SWITCH
⊕	120V 700A SWITCH
⊕	120V 750A SWITCH
⊕	120V 800A SWITCH
⊕	120V 850A SWITCH
⊕	120V 900A SWITCH
⊕	120V 950A SWITCH
⊕	120V 1000A SWITCH
⊕	120V 1050A SWITCH
⊕	120V 1100A SWITCH
⊕	120V 1150A SWITCH
⊕	120V 1200A SWITCH
⊕	120V 1250A SWITCH
⊕	120V 1300A SWITCH
⊕	120V 1350A SWITCH
⊕	120V 1400A SWITCH
⊕	120V 1450A SWITCH
⊕	120V 1500A SWITCH
⊕	120V 1550A SWITCH
⊕	120V 1600A SWITCH
⊕	120V 1650A SWITCH
⊕	120V 1700A SWITCH
⊕	120V 1750A SWITCH
⊕	120V 1800A SWITCH
⊕	120V 1850A SWITCH
⊕	120V 1900A SWITCH
⊕	120V 1950A SWITCH
⊕	120V 2000A SWITCH
⊕	120V 2050A SWITCH
⊕	120V 2100A SWITCH
⊕	120V 2150A SWITCH
⊕	120V 2200A SWITCH
⊕	120V 2250A SWITCH
⊕	120V 2300A SWITCH
⊕	120V 2350A SWITCH
⊕	120V 2400A SWITCH
⊕	120V 2450A SWITCH
⊕	120V 2500A SWITCH
⊕	120V 2550A SWITCH
⊕	120V 2600A SWITCH
⊕	120V 2650A SWITCH
⊕	120V 2700A SWITCH
⊕	120V 2750A SWITCH
⊕	120V 2800A SWITCH
⊕	120V 2850A SWITCH
⊕	120V 2900A SWITCH
⊕	120V 2950A SWITCH
⊕	120V 3000A SWITCH
⊕	120V 3050A SWITCH
⊕	120V 3100A SWITCH
⊕	120V 3150A SWITCH
⊕	120V 3200A SWITCH
⊕	120V 3250A SWITCH
⊕	120V 3300A SWITCH
⊕	120V 3350A SWITCH
⊕	120V 3400A SWITCH
⊕	120V 3450A SWITCH
⊕	120V 3500A SWITCH
⊕	120V 3550A SWITCH
⊕	120V 3600A SWITCH
⊕	120V 3650A SWITCH
⊕	120V 3700A SWITCH
⊕	120V 3750A SWITCH
⊕	120V 3800A SWITCH
⊕	120V 3850A SWITCH
⊕	120V 3900A SWITCH
⊕	120V 3950A SWITCH
⊕	120V 4000A SWITCH
⊕	120V 4050A SWITCH
⊕	120V 4100A SWITCH
⊕	120V 4150A SWITCH
⊕	120V 4200A SWITCH
⊕	120V 4250A SWITCH
⊕	120V 4300A SWITCH
⊕	120V 4350A SWITCH
⊕	120V 4400A SWITCH
⊕	120V 4450A SWITCH
⊕	120V 4500A SWITCH
⊕	120V 4550A SWITCH
⊕	120V 4600A SWITCH
⊕	120V 4650A SWITCH
⊕	120V 4700A SWITCH
⊕	120V 4750A SWITCH
⊕	120V 4800A SWITCH
⊕	120V 4850A SWITCH
⊕	120V 4900A SWITCH
⊕	120V 4950A SWITCH
⊕	120V 5000A SWITCH
⊕	120V 5050A SWITCH
⊕	120V 5100A SWITCH
⊕	120V 5150A SWITCH
⊕	120V 5200A SWITCH
⊕	120V 5250A SWITCH
⊕	120V 5300A SWITCH
⊕	120V 5350A SWITCH
⊕	120V 5400A SWITCH
⊕	120V 5450A SWITCH
⊕	120V 5500A SWITCH
⊕	120V 5550A SWITCH
⊕	120V 5600A SWITCH
⊕	120V 5650A SWITCH
⊕	120V 5700A SWITCH
⊕	120V 5750A SWITCH
⊕	120V 5800A SWITCH
⊕	120V 5850A SWITCH
⊕	120V 5900A SWITCH
⊕	120V 5950A SWITCH
⊕	120V 6000A SWITCH
⊕	120V 6050A SWITCH
⊕	120V 6100A SWITCH
⊕	120V 6150A SWITCH
⊕	120V 6200A SWITCH
⊕	120V 6250A SWITCH
⊕	120V 6300A SWITCH
⊕	120V 6350A SWITCH
⊕	120V 6400A SWITCH
⊕	120V 6450A SWITCH
⊕	120V 6500A SWITCH
⊕	120V 6550A SWITCH
⊕	120V 6600A SWITCH
⊕	120V 6650A SWITCH
⊕	120V 6700A SWITCH
⊕	120V 6750A SWITCH
⊕	120V 6800A SWITCH
⊕	120V 6850A SWITCH
⊕	120V 6900A SWITCH
⊕	120V 6950A SWITCH
⊕	120V 7000A SWITCH
⊕	120V 7050A SWITCH
⊕	120V 7100A SWITCH
⊕	120V 7150A SWITCH
⊕	120V 7200A SWITCH
⊕	120V 7250A SWITCH
⊕	120V 7300A SWITCH
⊕	120V 7350A SWITCH
⊕	120V 7400A SWITCH
⊕	120V 7450A SWITCH
⊕	120V 7500A SWITCH
⊕	120V 7550A SWITCH
⊕	120V 7600A SWITCH
⊕	120V 7650A SWITCH
⊕	120V 7700A SWITCH
⊕	120V 7750A SWITCH
⊕	120V 7800A SWITCH
⊕	120V 7850A SWITCH
⊕	120V 7900A SWITCH
⊕	120V 7950A SWITCH
⊕	120V 8000A SWITCH
⊕	120V 8050A SWITCH
⊕	120V 8100A SWITCH
⊕	120V 8150A SWITCH
⊕	120V 8200A SWITCH
⊕	120V 8250A SWITCH
⊕	120V 8300A SWITCH
⊕	120V 8350A SWITCH
⊕	120V 8400A SWITCH
⊕	120V 8450A SWITCH
⊕	120V 8500A SWITCH
⊕	120V 8550A SWITCH
⊕	120V 8600A SWITCH
⊕	120V 8650A SWITCH
⊕	120V 8700A SWITCH
⊕	120V 8750A SWITCH
⊕	120V 8800A SWITCH
⊕	120V 8850A SWITCH
⊕	120V 8900A SWITCH
⊕	120V 8950A SWITCH
⊕	120V 9000A SWITCH
⊕	120V 9050A SWITCH
⊕	120V 9100A SWITCH
⊕	120V 9150A SWITCH
⊕	120V 9200A SWITCH
⊕	120V 9250A SWITCH
⊕	120V 9300A SWITCH
⊕	120V 9350A SWITCH
⊕	120V 9400A SWITCH
⊕	120V 9450A SWITCH
⊕	120V 9500A SWITCH
⊕	120V 9550A SWITCH
⊕	120V 9600A SWITCH
⊕	120V 9650A SWITCH
⊕	120V 9700A SWITCH
⊕	120V 9750A SWITCH
⊕	120V 9800A SWITCH
⊕	120V 9850A SWITCH
⊕	120V 9900A SWITCH
⊕	120V 9950A SWITCH
⊕	120V 10000A SWITCH



ELECTRICAL PLAN 1/1

SHEET E1.0



COREY & JILL BUCK
 LOT # 197 (610 PEARL VIEW CT) THE BLUFFS @ 10
 DATE: 08/17/2020
ELECTRICAL PLAN
 PLAN NUMBER: 20-10898-2

MACALUSO
 home designs, inc.
 www.macalusohomedesigns.com
 204 Village Circle • Suite 2 • Slidell, Louisiana 70458
 P: (985)641-7168
 F: (985)641-1859

copyright © 2020 Macaluso Home Designs, Inc.
 (All rights reserved)
 These prints are sole property of Macaluso Home Designs, Inc. & can not be reproduced w/o written permission.
 NOTE!!!
 Although every effort in preparing and checking these plans for accuracy, the contractor is responsible. In large for checking all related square footage and International Residential Code 2015 updates, that pertain to these building plans.