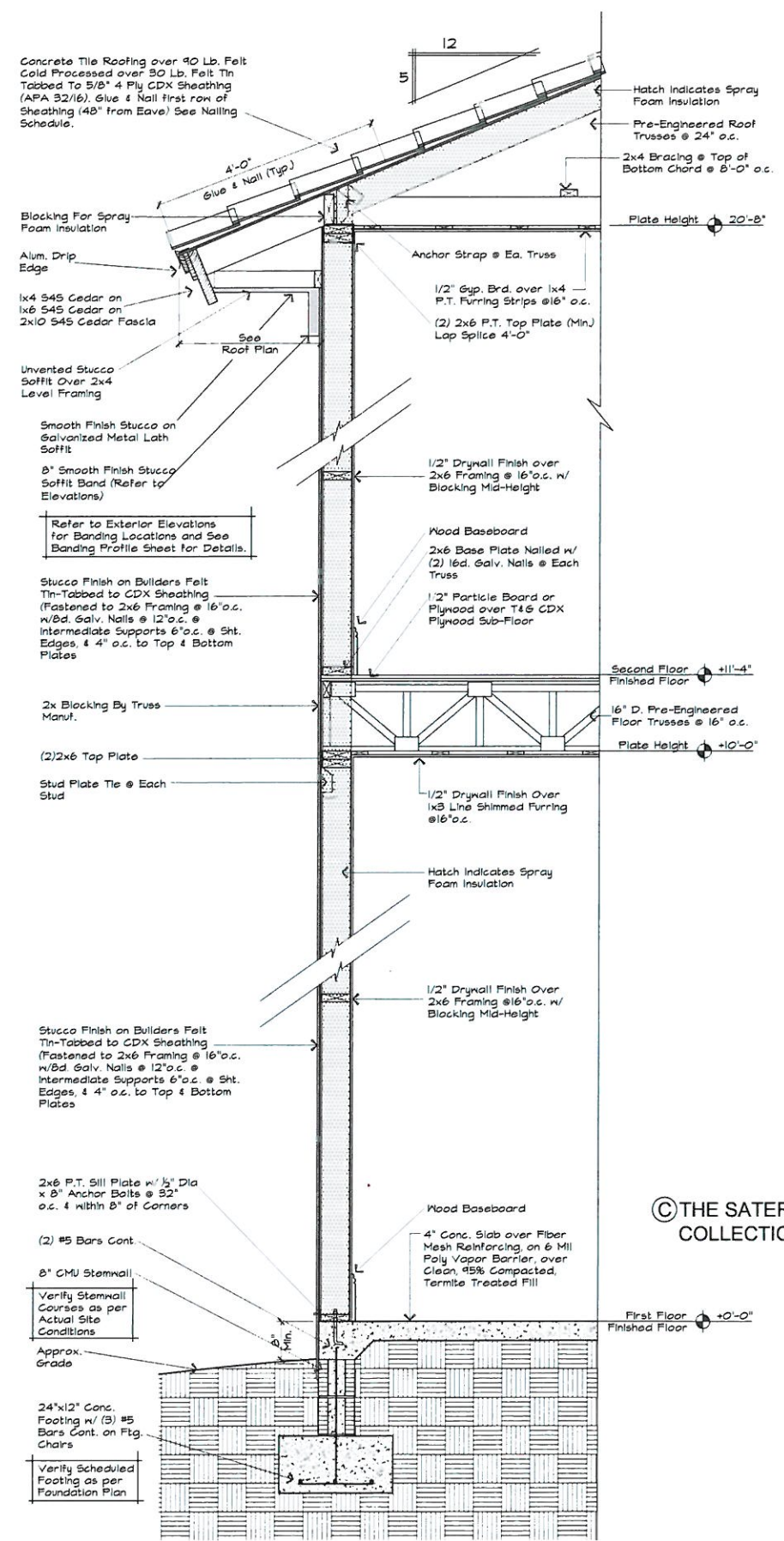


A Wall Section @ Garage
 A-2 For Design Purposes only. Refer to Engineers Specifications. Scale: 3/4" = 1'-0"



B 2-Story Wall Section @ House
 A-2 For Design Purposes only. Refer to Engineers Specifications. Scale: 3/4" = 1'-0"

THE SATER DESIGN COLLECTION, INC. IS NOT PROVIDING ANY CONTRACT ADMINISTRATION SERVICES. THE CONTRACTOR SHALL BE RESPONSIBLE FOR OBTAINING ALL NECESSARY PERMITS AND FOR OBTAINING ALL NECESSARY APPROVALS FROM ALL APPLICABLE AGENCIES. THE CONTRACTOR SHALL BE RESPONSIBLE FOR OBTAINING ALL NECESSARY APPROVALS FROM ALL APPLICABLE AGENCIES. THE CONTRACTOR SHALL BE RESPONSIBLE FOR OBTAINING ALL NECESSARY APPROVALS FROM ALL APPLICABLE AGENCIES.

PROJECT
Ferretti
6786

Any reproduction of these prints is prohibited by Federal Copyright Laws. Any illegal reproduction will be aggressively pursued to the fullest extent of the copyright law.
 © The Sater Design Collection, Inc.

Bonita Springs • Ft. Myers • Naples
 22041 Elementary Way Suite 201
 Bonita Springs, FL 34135
 239-496-6476

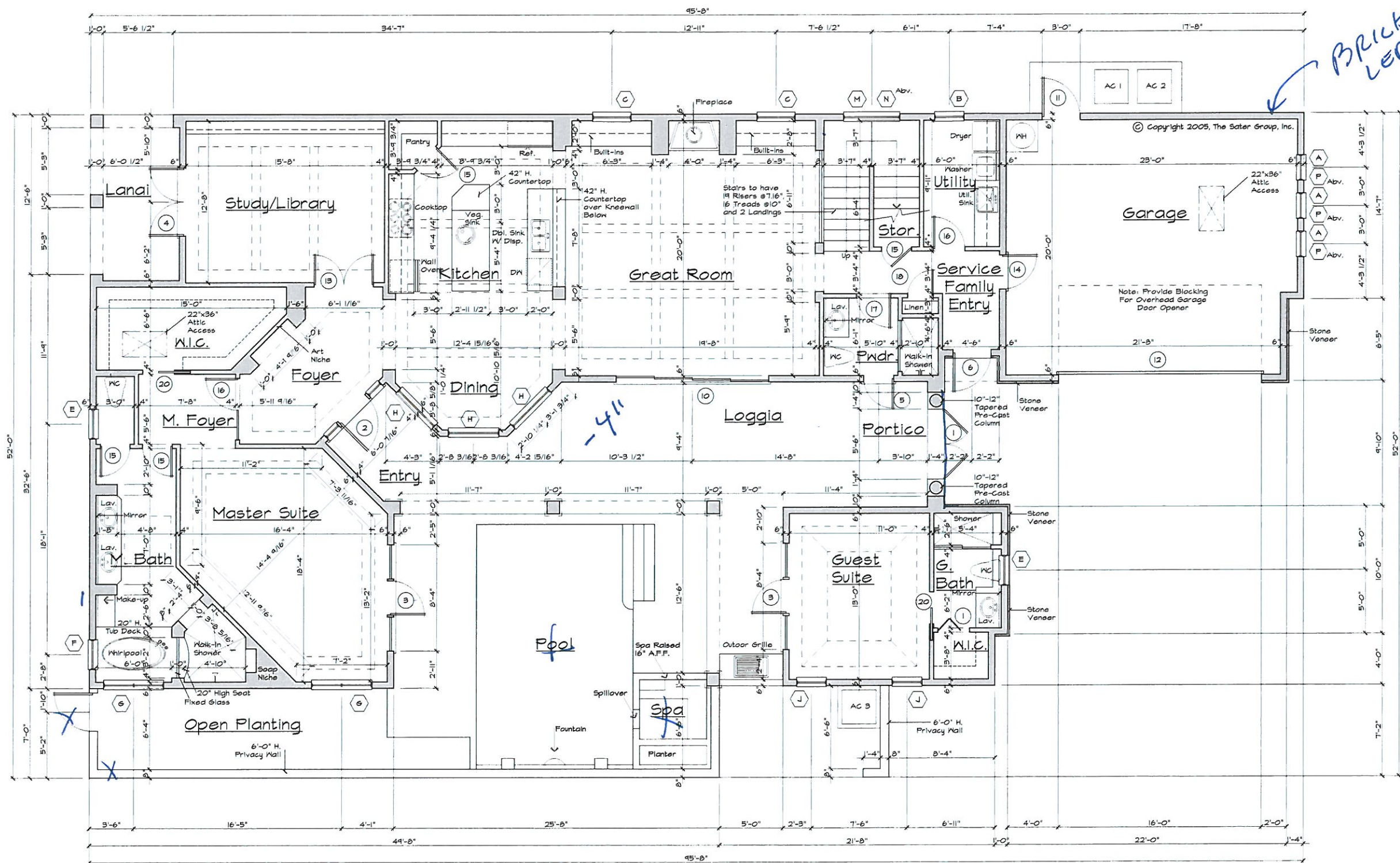
SaterDesign
 COLLECTION

AMERICAN INSTITUTE
A B D
 OF BUILDING DESIGN

DRWG. NO.	6786
DATE	12-12-05
DRAWN BY	JP
CHECKED BY	DFS II
REVISIONS	
DATE	

A-2

The Sater Design Collection, Inc. hereby reserves its common law copyright, and other property rights in these plans, ideas, designs, and specifications. These plans, ideas, designs, and specifications are not to be reproduced, changed or copied in any form or manner whatsoever nor are they to be assigned to any third party, without first obtaining the express written permission from The Sater Design Collection, Inc. Written dimensions on these drawings shall have precedence over scale dimensions. Contractors shall verify and be responsible for all dimensions and conditions of the job & The Sater Design Collection, Inc. must be notified in writing of any variation from the dimensions, conditions, and specifications shown by these drawings. All construction shall be in accordance with the International Building Code (IBC) & state and local codes.



First Floor Plan

Scale: 1/4" = 1'-0"

INTERNATIONAL BUILDING CODES: We have prepared these floor plans in accordance with the International Building Code (IBC) 2003 Edition, as amended by the International Residential Code (IRC) 2003 Edition, and the International Mechanical Code (IMC) 2003 Edition. The International Building Code (IBC) 2003 Edition, as amended by the International Residential Code (IRC) 2003 Edition, and the International Mechanical Code (IMC) 2003 Edition, are hereby incorporated by reference into these floor plans. The International Building Code (IBC) 2003 Edition, as amended by the International Residential Code (IRC) 2003 Edition, and the International Mechanical Code (IMC) 2003 Edition, are hereby incorporated by reference into these floor plans. The International Building Code (IBC) 2003 Edition, as amended by the International Residential Code (IRC) 2003 Edition, and the International Mechanical Code (IMC) 2003 Edition, are hereby incorporated by reference into these floor plans. The International Building Code (IBC) 2003 Edition, as amended by the International Residential Code (IRC) 2003 Edition, and the International Mechanical Code (IMC) 2003 Edition, are hereby incorporated by reference into these floor plans.

PROJECT
Ferretti
6786

Any reproduction of these prints is prohibited by Federal Copyright Laws. Any illegal reproduction will be aggressively pursued to the fullest extent of the copyright law.
 © The Sater Design Collection, Inc.

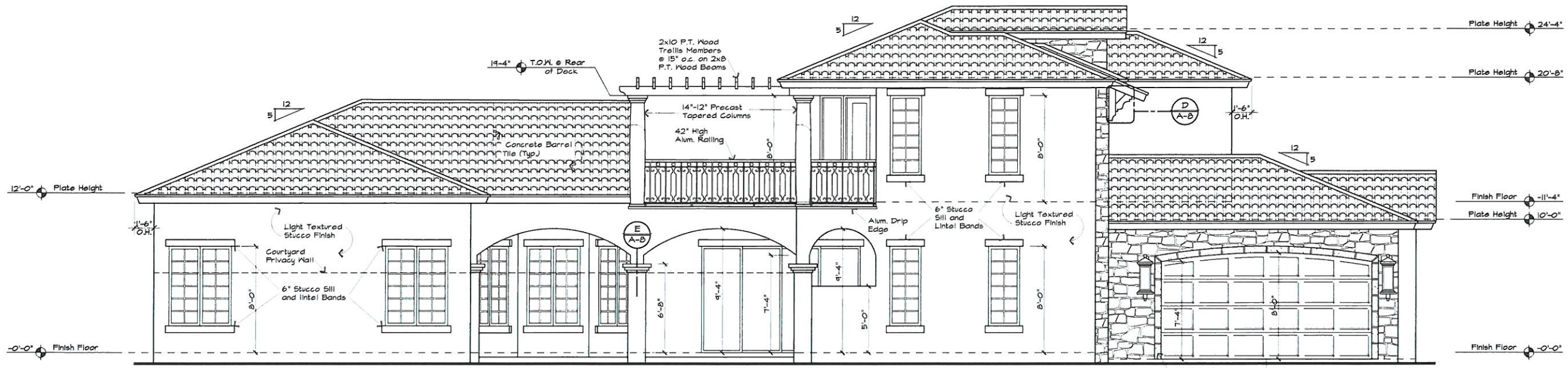
SaterDesign
 COLLECTION
 Bonita Springs • Ft. Myers • Naples
 20341 Elementary Way Suite 201
 Bonita Springs, FL 34135
 239-498-0478

AMERICAN INSTITUTE
A B D
 OF BUILDING DESIGN

DRWG. NO.	6786
DATE	12-12-05
DRAWN BY	JP
CHECKED BY	DFS II
REVISIONS	
DATE	

A-5

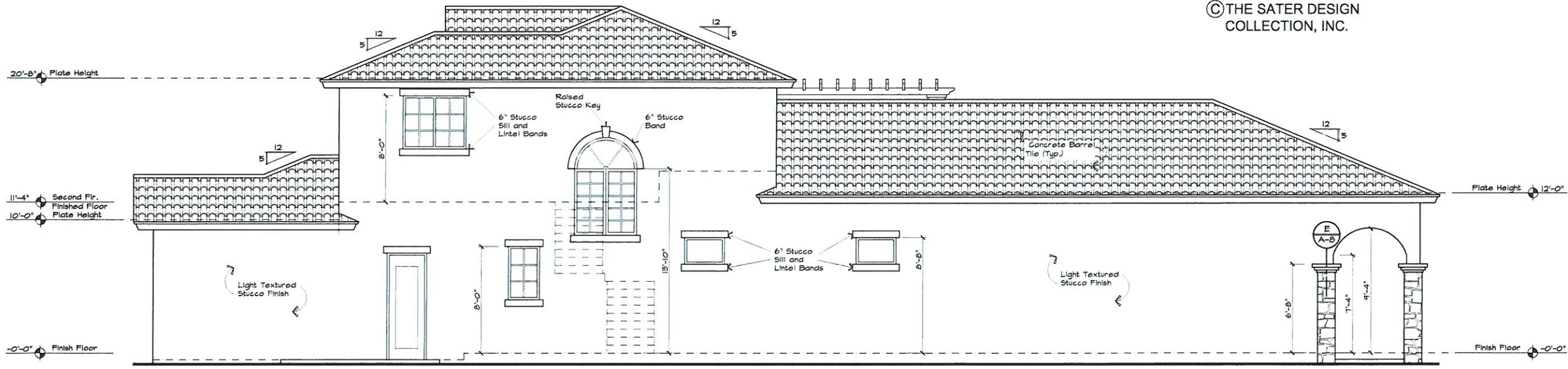
The Sater Design Collection, Inc. hereby reserves its common law copyright & other property rights in these plans, ideas & designs. These ideas, designs & plans are not to be reproduced, changed or copied in any form or manner whatsoever nor are they to be assigned to any third party, without first obtaining the express written permission from The Sater Design Collection, Inc. Written dimensions on these drawings shall have precedence over scale dimensions. Contractors shall verify and be responsible for all dimensions & conditions of the job & The Sater Design Collection, Inc. must be notified in writing of any variation from the dimensions, conditions & specifications shown by these drawings. All construction shall be in accordance with the International Building Code (IBC) & state and local codes.



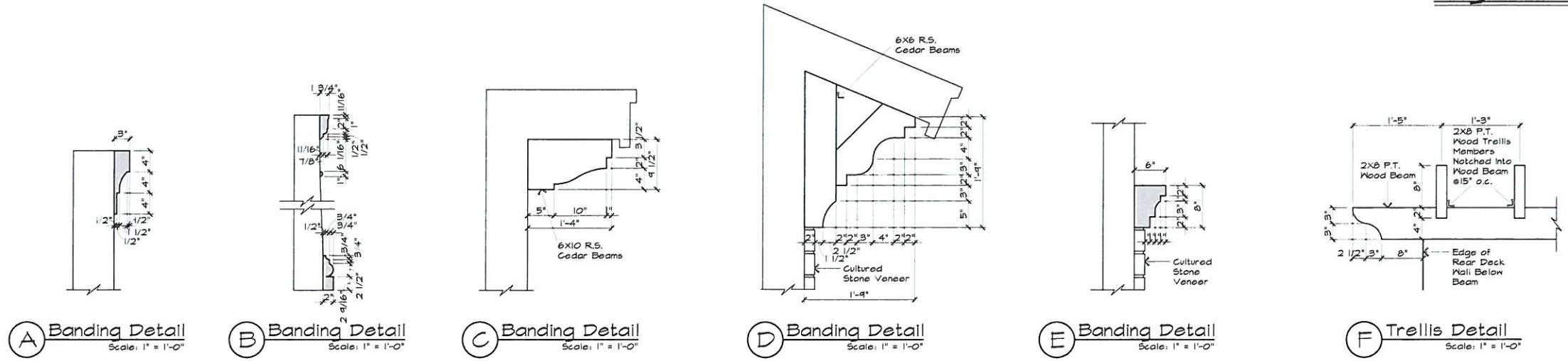
NOTE: Privacy Wall Not Shown for Clarity

Left Elevation
Scale: 1/4" = 1'-0"

© THE SATER DESIGN COLLECTION, INC.



Right Elevation
Scale: 1/4" = 1'-0"



A Banding Detail
Scale: 1" = 1'-0"

B Banding Detail
Scale: 1" = 1'-0"

C Banding Detail
Scale: 1" = 1'-0"

D Banding Detail
Scale: 1" = 1'-0"

E Banding Detail
Scale: 1" = 1'-0"

F Trellis Detail
Scale: 1" = 1'-0"

DISPUTE RESOLUTION: We have represented that the information on these drawings and specifications is true and correct to the best of our knowledge and belief. It is the responsibility of the client to verify the accuracy of the information provided. The Sater Design Collection, Inc. is not responsible for any errors or omissions on these drawings and specifications. The Sater Design Collection, Inc. is not responsible for any errors or omissions on these drawings and specifications. The Sater Design Collection, Inc. is not responsible for any errors or omissions on these drawings and specifications.

Ferretti
6786

PROJECT

Any reproduction of these prints is prohibited by Federal Copyright Laws. Any illegal reproduction will be aggressively pursued to the fullest extent of the copyright law.
© The Sater Design Collection, Inc.

Bonita Springs • Ft. Myers • Naples
2824 Elementary Way Suite 201
Bonita Springs, FL 34135
239-495-5478

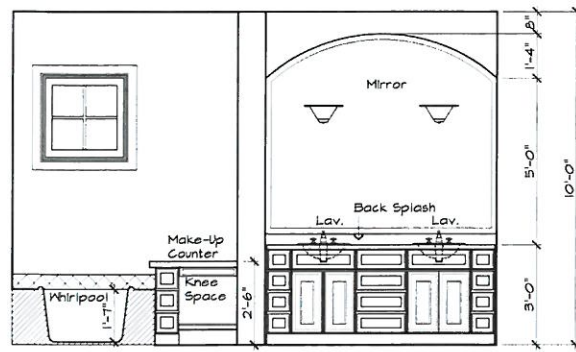
Sater Design
COLLECTION

AMERICAN INSTITUTE
A B D
OF BUILDING DESIGN®

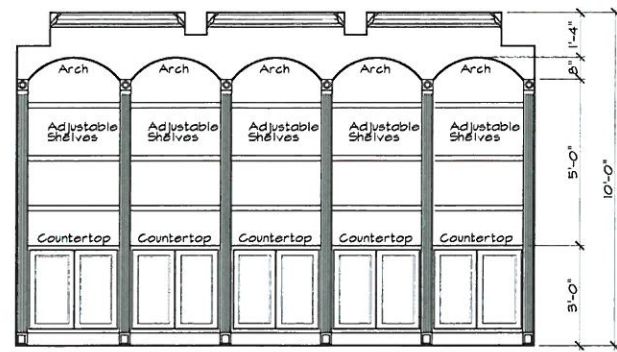
DRWG. NO.	6786
DATE	12-12-05
DRAWN BY	JP
CHECKED BY	DFS II
REVISIONS	
DATE	

A-8

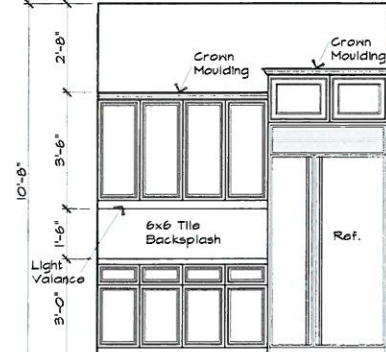
The Sater Design Collection, Inc. hereby reserves its common law copyright & other property rights in these plans, ideas & designs. These ideas, designs & plans are not to be reproduced, charged or copied in any form or manner whatsoever prior to their assignment to any third party, without first obtaining the express written permission from The Sater Design Collection, Inc. All construction shall be in accordance with the International Building Code (IBC) & state and local codes.



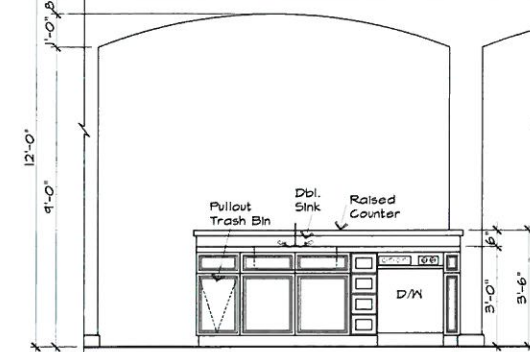
1 Master Bath
Scale: 3/8" = 1'-0"



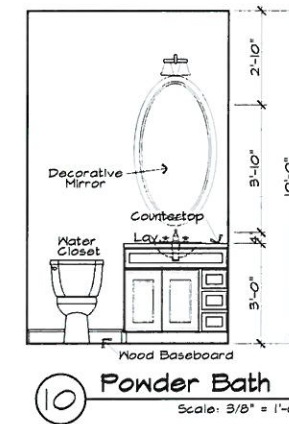
2 Study/Library
Scale: 3/8" = 1'-0"



3 Kitchen
Scale: 3/8" = 1'-0"

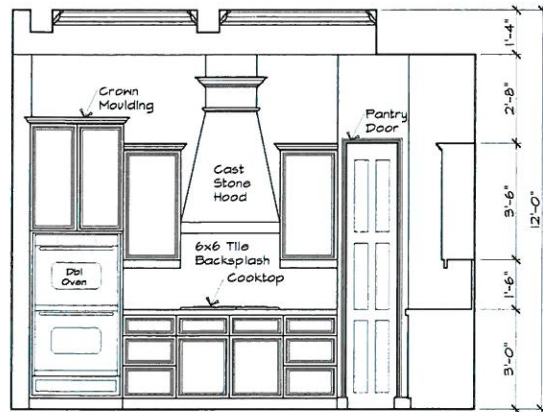


4 Kitchen Island
Scale: 3/8" = 1'-0"

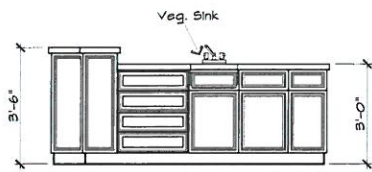


10 Powder Bath
Scale: 3/8" = 1'-0"

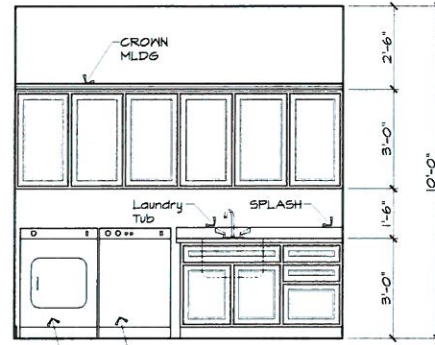
© THE SATER DESIGN COLLECTION, INC. All rights reserved. This drawing is the property of The Sater Design Collection, Inc. and is not to be reproduced, changed or copied in any form or manner whatsoever nor are they to be assigned to any third party, without first obtaining the express written permission from The Sater Design Collection, Inc. Written dimensions on these drawings shall have precedence over scale dimensions. Contractors shall verify and be responsible for all dimensions & conditions of the job & The Sater Design Collection, Inc. must be notified in writing of any variation from the dimensions, conditions & specifications shown by these drawings. All construction shall be in accordance with the International Building Code (IBC) & state and local codes. Any reproduction of these prints is prohibited by Federal Copyright Laws. Any illegal reproduction will be aggressively pursued to the fullest extent of the copyright law. © The Sater Design Collection, Inc.



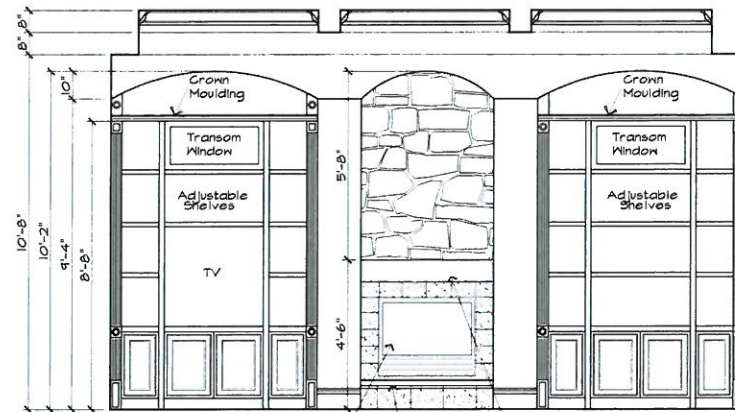
5 Kitchen
Scale: 3/8" = 1'-0"



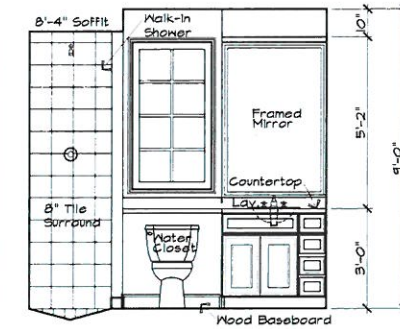
6 Kitchen Island
Scale: 3/8" = 1'-0"



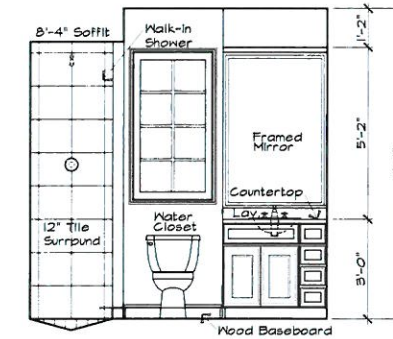
9 Utility Room
Scale: 3/8" = 1'-0"



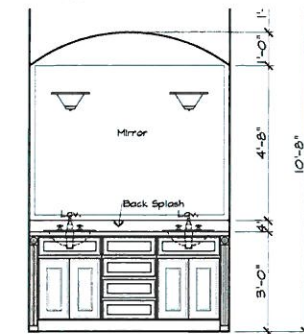
7 Great Room Fireplace
Scale: 3/8" = 1'-0"



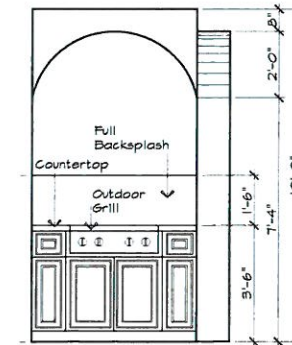
8 Guest Bath
Scale: 3/8" = 1'-0"



13 Bath 3
Scale: 3/8" = 1'-0"



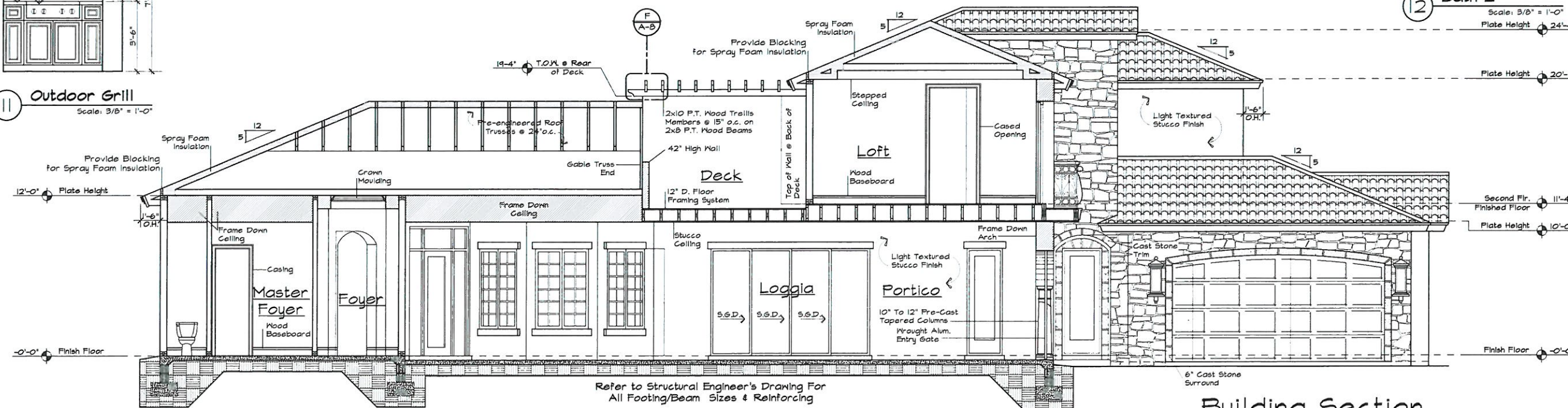
12 Bath 2
Scale: 3/8" = 1'-0"
Plate Height 24'-4"



11 Outdoor Grill
Scale: 3/8" = 1'-0"

Interior Elevations

© THE SATER DESIGN COLLECTION, INC.



Refer to Structural Engineer's Drawing For All Footing/Beam Sizes & Reinforcing

Building Section

Scale: 1/4" = 1'-0"

Ferretti
6786

PROJECT

Any reproduction of these prints is prohibited by Federal Copyright Laws. Any illegal reproduction will be aggressively pursued to the fullest extent of the copyright law. © The Sater Design Collection, Inc.

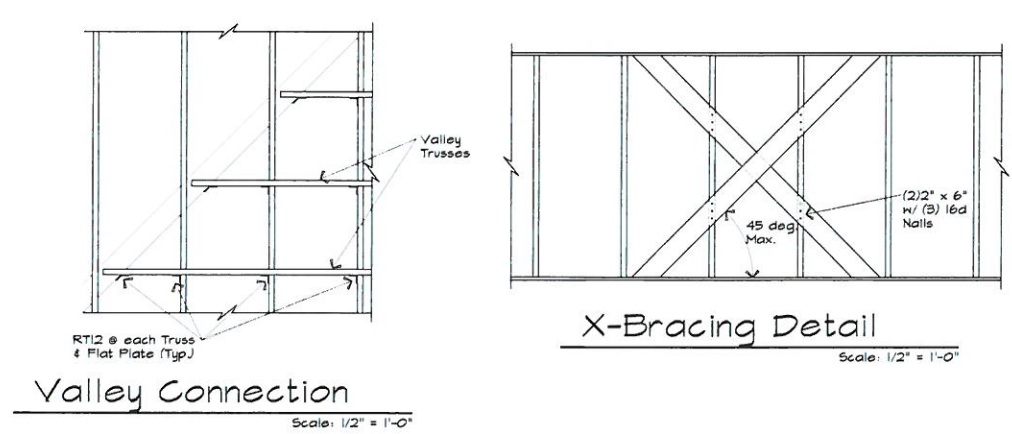
Bonita Springs • Ft. Myers • Naples
2224 Elementary Way Suite 201
Bonita Springs, FL 34135
239-466-6476

Sater Design
COLLECTION

AMERICAN INSTITUTE
OF BUILDING DESIGN®
A B D

DRWG. NO.	6786
DATE	12-12-05
DRAWN BY	JP
CHECKED BY	DFS II
REVISIONS	
DATE	

A-9



Strapping Schedule:
 Wood Beam to Joist/Truss - Simpson #T518
 Truss Strap @ ea Joist/Rafter - Uplift 480 lbs.
 Frame Wall to Joist/Truss - Simpson #T518
 Truss Strap @ ea Joist/Rafter - Uplift 480 lbs.
 Interior Frame Partitions - Simpson #T514
 Truss Strap @ ea Joist/Rafter - Uplift 580 lbs.

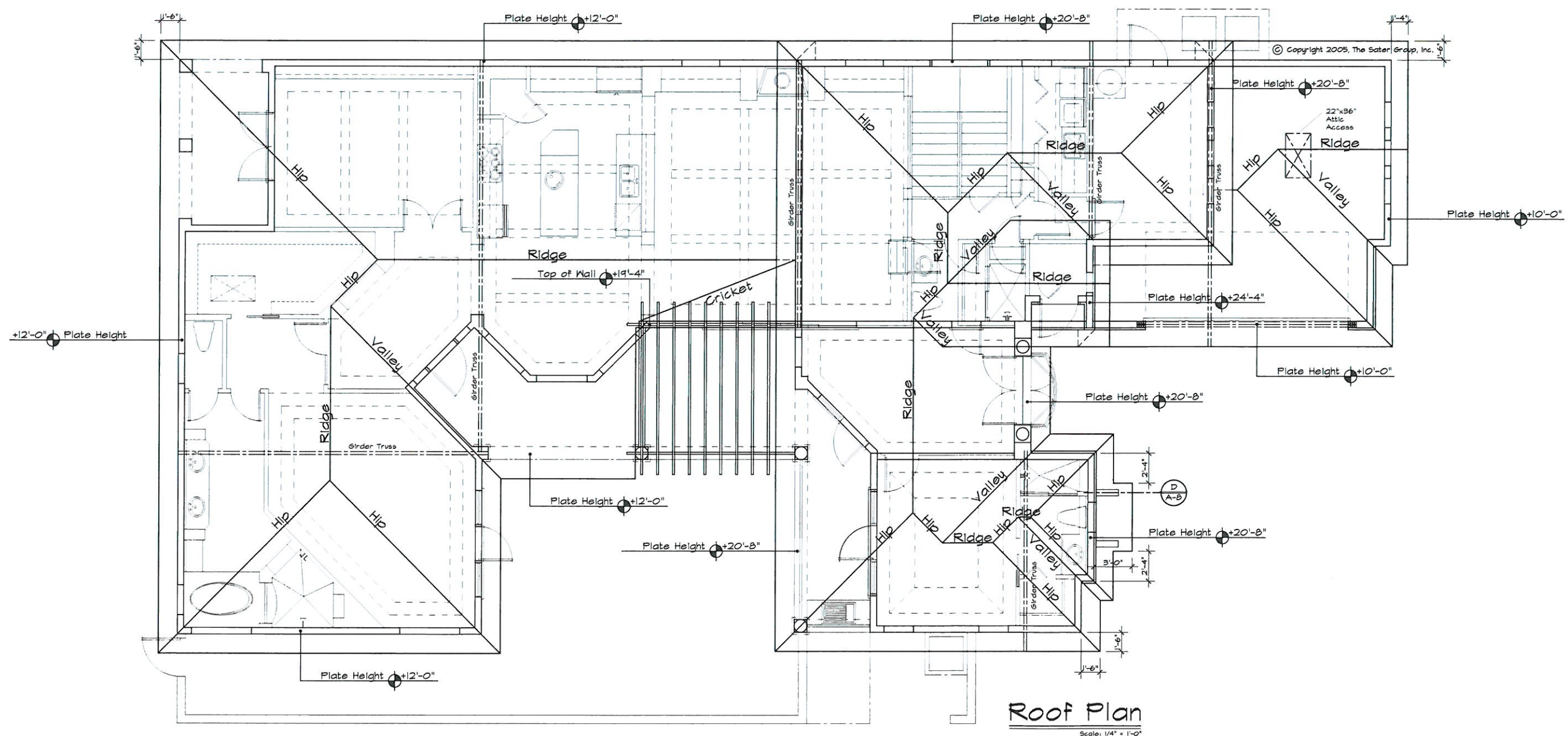
Note:
 Provide (2) each straps as listed above at each end of beams, headers and at all hipset or girder trusses. Attach all straps with galvanized nails of size and quantity specified by strap manufacturer.

Sheathing Nailing Schedule:
Roof Sheathing:
 First sheet of plywood along eaves to be glued and nailed with 8d galvanized nails 4' O.C. at roof edge 6' O.C. at ends and 8' O.C. in field.
 Remainder of plywood sheathing: 8d galvanized nails 6' O.C. at ends and 8' O.C. in field.
Wall Sheathing:
 Glue and nail plywood with 8d galvanized nails at 4' O.C. top and bottom 6' O.C. at edges and 8' O.C. in field.
Floor Sheathing:
 Glue and nail 3/4" T&G plywood with #8 screws 6' O.C. at plywood edges and 8' O.C. in field.

Roof Construction Notes:

1. Roof overhang to be 18" unless noted otherwise.
2. Roof pitch to be 5/12 on porches, U.N.O.
3. Provide attic vents as specified in wall sections.
4. Tie roof trusses to interior partitions with metal clips ties or straps as specified in Strapping Schedule, above.
5. First sheet of plywood along eaves to be glued and nailed as described in Sheathing Nailing Schedule above.
6. Truss designs require the signature and seal of a state certified engineer.
7. Provide all required truss bracing as specified on engineered truss plan.

THESE PRINTS, DRAWINGS, AND SPECIFICATIONS ARE THE PROPERTY OF THE SATER GROUP, INC. AND ARE NOT TO BE REPRODUCED, COPIED, OR TRANSMITTED IN ANY FORM OR BY ANY MEANS, ELECTRONIC OR MECHANICAL, INCLUDING PHOTOCOPYING, RECORDING, OR BY ANY INFORMATION STORAGE AND RETRIEVAL SYSTEM, WITHOUT THE WRITTEN PERMISSION OF THE SATER GROUP, INC. CONTRACTORS SHALL VERIFY ALL DIMENSIONS AND CONDITIONS OF THE PROJECT AS SHOWN ON THESE DRAWINGS. THE SATER GROUP, INC. SHALL NOT BE RESPONSIBLE FOR ANY DAMAGES, INCLUDING MATERIAL DAMAGE, ARISING FROM THE USE OF THESE DRAWINGS. THE SATER GROUP, INC. SHALL NOT BE RESPONSIBLE FOR ANY DAMAGES, INCLUDING MATERIAL DAMAGE, ARISING FROM THE USE OF THESE DRAWINGS. THE SATER GROUP, INC. SHALL NOT BE RESPONSIBLE FOR ANY DAMAGES, INCLUDING MATERIAL DAMAGE, ARISING FROM THE USE OF THESE DRAWINGS.



Ferretti
6786

PROJECT

Any reproduction of these prints is prohibited by Federal Copyright Laws. Any illegal reproduction will be aggressively pursued to the fullest extent of the copyright law.
 © The Sater Design Collection, Inc.

Bonita Springs • FL • Myers • Naples
 23841 Elementary Way Suite 201
 Bonita Springs, FL 34135
 239-486-6786

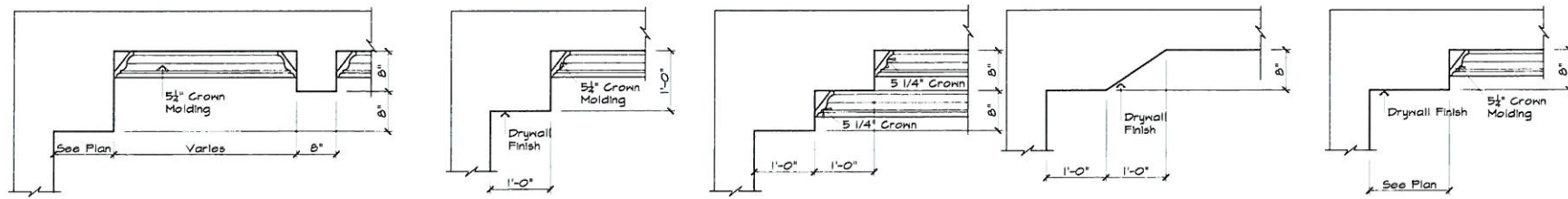
Sater Design
COLLECTION

AMERICAN INSTITUTE
A B D
 OF BUILDING DESIGN

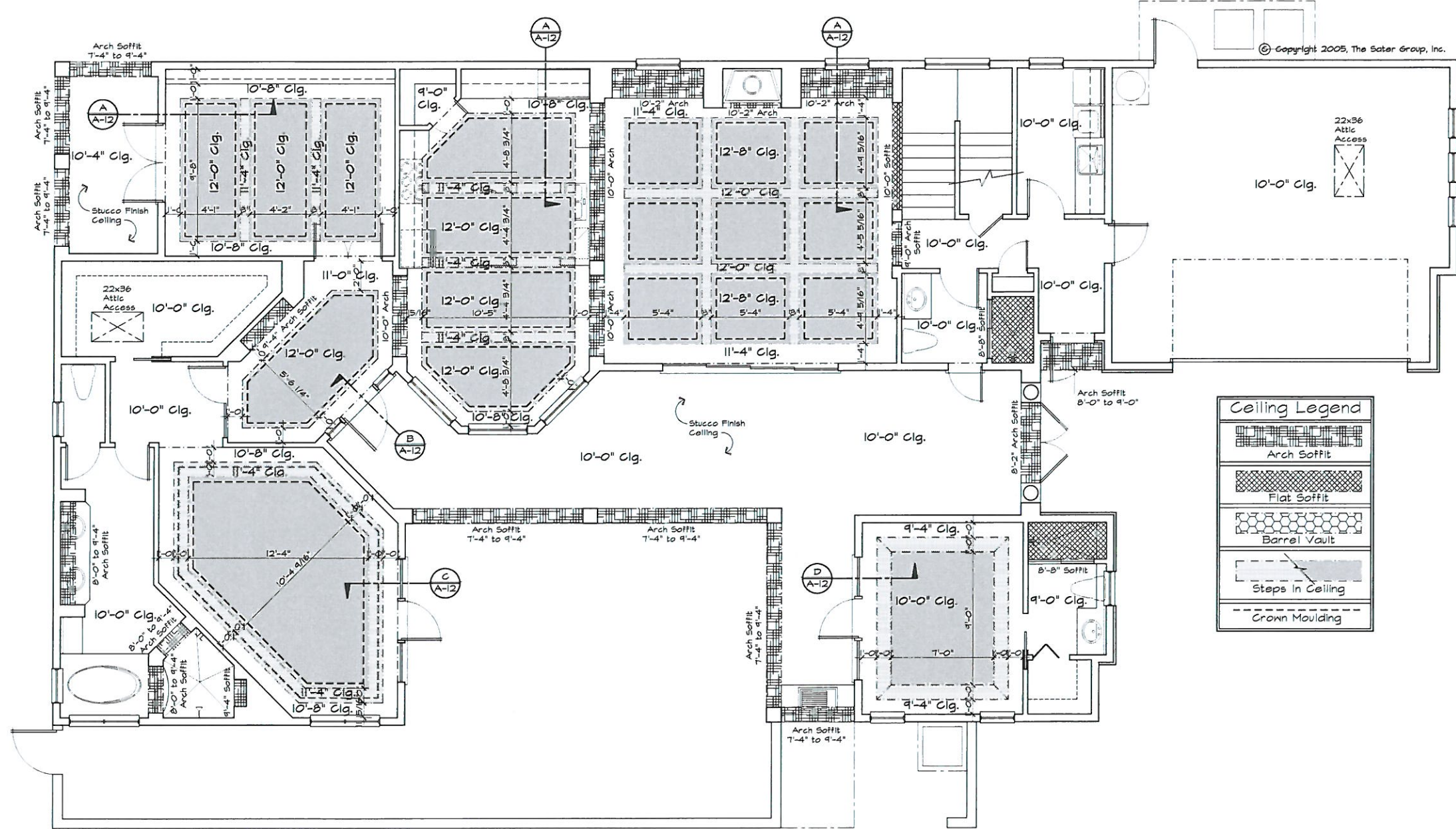
DRWG. NO.	6786
DATE	12-12-05
DRAWN BY	JP
CHECKED BY	DFS II
REVISIONS	
DATE	

A-11

The Sater Design Collection, Inc. hereby reserves its common law copyright & other property rights in these plans, ideas & designs. These ideas, designs & plans are not to be reproduced, changed or copied in any form or manner whatsoever nor are they to be assigned to any third party, without first obtaining the express written permission from The Sater Design Collection, Inc. Written dimensions on these drawings shall have precedence over scale dimensions. Contractors shall verify and be responsible for all dimensions & conditions of the job & The Sater Design Collection, Inc. must be notified in writing of any variation from the dimensions, conditions & specifications shown by these drawings. All construction shall be in accordance with the International Building Code (IBC) & state and local codes.



(A) Ceiling Detail Scale: 3/4" = 1'-0"
 (B) Ceiling Detail Scale: 3/4" = 1'-0"
 (C) Ceiling Detail Scale: 3/4" = 1'-0"
 (D) Ceiling Detail Scale: 3/4" = 1'-0"
 (E) Ceiling Detail Scale: 3/4" = 1'-0"



Ceiling Legend	
	Arch Soffit
	Flat Soffit
	Barrel Vault
	Steps in Ceiling
	Crown Molding

First Floor Reflected Ceiling Plan
 Scale: 1/4" = 1'-0"

THESE PRINTS, DRAWINGS, SPECIFICATIONS, AND NOTES ARE THE PROPERTY OF THE SATER GROUP, INC. AND ARE NOT TO BE REPRODUCED, COPIED, OR TRANSMITTED IN ANY FORM OR BY ANY MEANS, ELECTRONIC OR MECHANICAL, INCLUDING PHOTOCOPYING, RECORDING, OR BY ANY INFORMATION STORAGE AND RETRIEVAL SYSTEM, WITHOUT THE EXPRESS WRITTEN PERMISSION OF THE SATER GROUP, INC. THE SATER GROUP, INC. SHALL BE RESPONSIBLE FOR ALL DIMENSIONS AND CONDITIONS OF THE PROJECT. THE SATER GROUP, INC. SHALL BE RESPONSIBLE FOR ALL DIMENSIONS AND CONDITIONS OF THE PROJECT. THE SATER GROUP, INC. SHALL BE RESPONSIBLE FOR ALL DIMENSIONS AND CONDITIONS OF THE PROJECT.

Ferretti
6786

PROJECT

Any reproduction of these prints is prohibited by Federal Copyright Laws. Any illegal reproduction will be aggressively pursued to the fullest extent of the copyright law.
 © The Sater Design Collection, Inc.

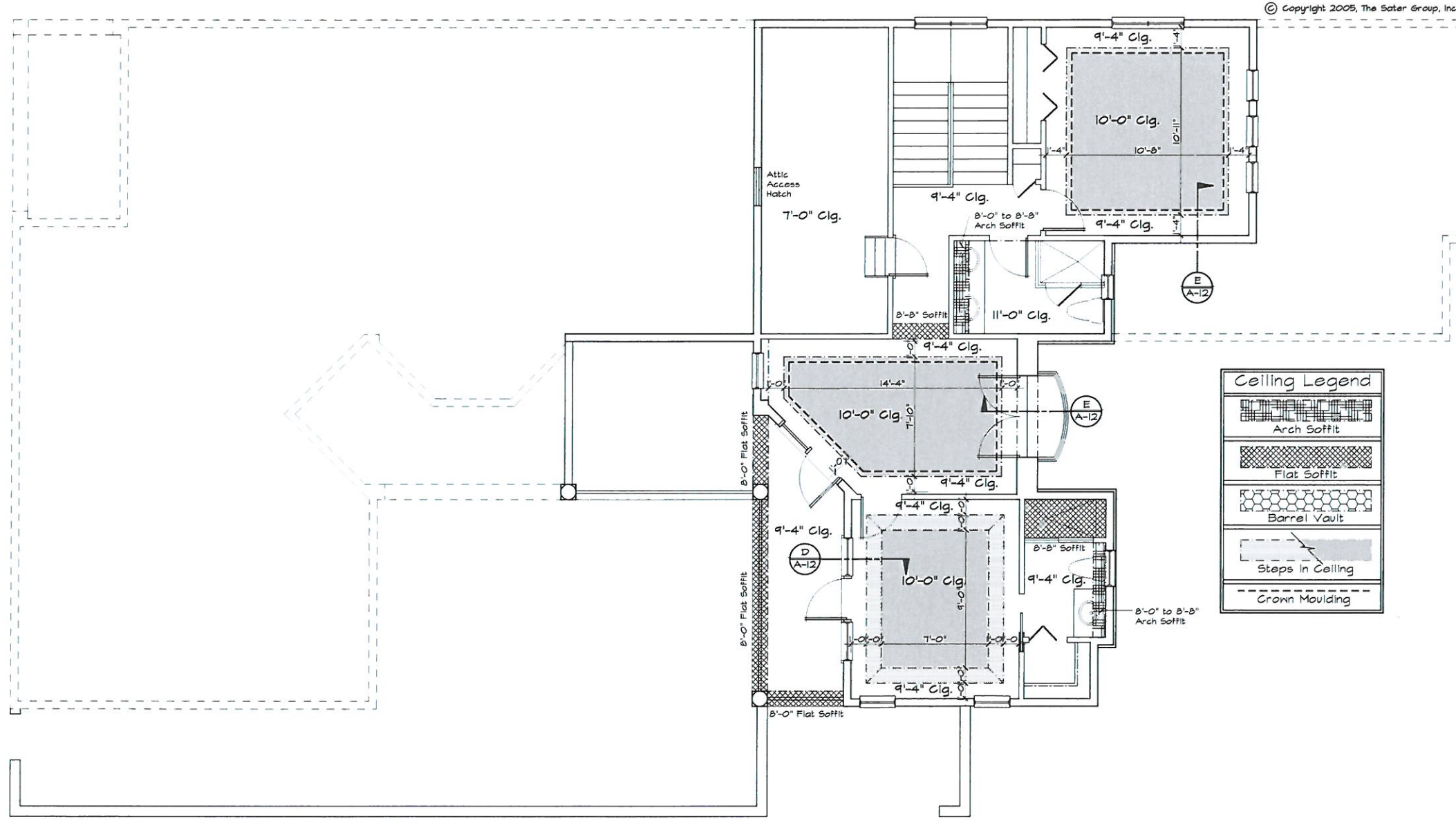
Bonita Springs • Ft. Myers • Naples
 23241 Elementary Way Suite 201
 Bonita Springs, FL 34135
 239-498-6478

SaterDesign
 COLLECTION

AMERICAN INSTITUTE
A B D
 OF BUILDING DESIGN®

DRWG. NO.	6786
DATE	12-12-05
DRAWN BY	JP
CHECKED BY	DFS II
REVISIONS	
DATE	

A-12



© Copyright 2005, The Sater Group, Inc.

Second Floor Reflected Ceiling Plan

Scale: 1/4" = 1'-0"

DISCLAIMER: SATER DESIGN, INC. is not responsible for the construction of this project. It is the responsibility of the contractor to verify all dimensions and conditions shown on these drawings. SATER DESIGN, INC. is not responsible for the construction of this project. It is the responsibility of the contractor to verify all dimensions and conditions shown on these drawings. SATER DESIGN, INC. is not responsible for the construction of this project. It is the responsibility of the contractor to verify all dimensions and conditions shown on these drawings.

PROJECT

**Ferretti
6786**

Any reproduction of these prints is prohibited by Federal Copyright Laws. Any illegal reproduction will be aggressively pursued to the fullest extent of the copyright law.
© The Sater Design Collection, Inc.

Bonita Springs • Ft. Myers • Naples
28841 Elementary Way Suite 201
Bonita Springs, FL 34135
239-496-6478

SaterDesign
COLLECTION

AMERICAN INSTITUTE
A B D
OF BUILDING DESIGN®

DRWG. NO.	6786
DATE	12-12-05
DRAWN BY	JP
CHECKED BY	DFS II
REVISIONS	
DATE	

A-13

The Sater Design Collection, Inc. hereby reserves its common law copyright & other property rights in these plans, ideas & designs. These ideas, designs & plans are not to be reproduced, changed or copied in any form or manner whatsoever, nor are they to be assigned to any third party, without first obtaining the express written permission from The Sater Design Collection, Inc. Written dimensions on these drawings shall have precedence over scale dimensions. Construction shall verify all dimensions for the construction of the job & The Sater Design Collection, Inc. must be notified in writing of any variation from the dimensions, conditions & specifications shown by these drawings. All construction shall be in accordance with the International Building Code (IBC) & state and local codes.

