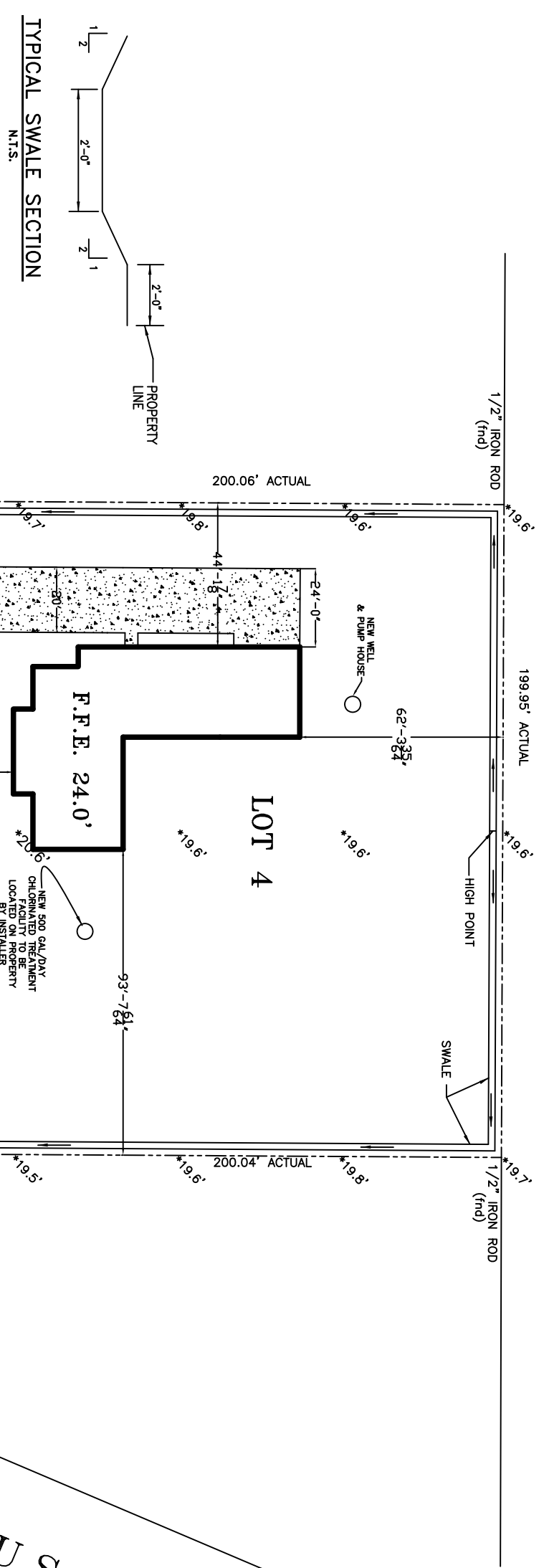


- LEGEND**
- - - - - PROPERTY LINE
 - ▬ NEW BUILDING OUTLINE
 - ▬ NEW CONCRETE DRIVEWAY
 - - - - - NEW 24" X 30" RCP CULVERT
 - ⊕ INVERT ELEVATION



NOTE: ELEVATIONS ARE RELATIVE TO A P.K. NAIL IN THE ROAD IN FRONT OF LOT 4. ELEV. = 20.0'(RELATIVE)

DESIGN CRITERIA:

THE CONSTRUCTION FOR SAID RESIDENCE, WHERE BASIC WIND SPEEDS IS 130 MILES PER HOUR, IS DESIGNED IN ACCORDANCE WITH:
 AMERICAN FOREST AND PAPER ASSOCIATION (AF&PA)
 WOOD FRAME CONSTRUCTION MANUAL FOR ONE AND TWO FAMILY DWELLINGS (WFCM 2001 EDITION)
 AS WELL AS THE INTERNATIONAL RESIDENTIAL CODE (IRC) 2000 EDITION

DRIVEWAYS:

- 1) ALL DRIVEWAYS BETWEEN STREET AND PROPERTY LINE SHALL BE CONSTRUCTED OF PORTLAND CEMENT CONCRETE WITH A COMPRESSIVE STRENGTH OF 4,000 P.S.I. AT TWENTY-EIGHT DAYS AND A MINIMUM THICKNESS OF 6"
- 2) EXACT LOCATIONS OF ROADWAY AND DRIVEWAY CURBING WILL BE DETERMINED IN THE FIELD BY A REPRESENTATIVE OF THE REGULATORY DEPARTMENT OF ENGINEERING.
- 3) CONTRACTOR SHALL CONTACT THEIR REGULATORY DEPARTMENT OF ENGINEERING PRIOR TO THE FORMING OF DRIVEWAYS CONNECTING TO THE ROADWAY.

SHAMROCK DRIVE
60' R/W

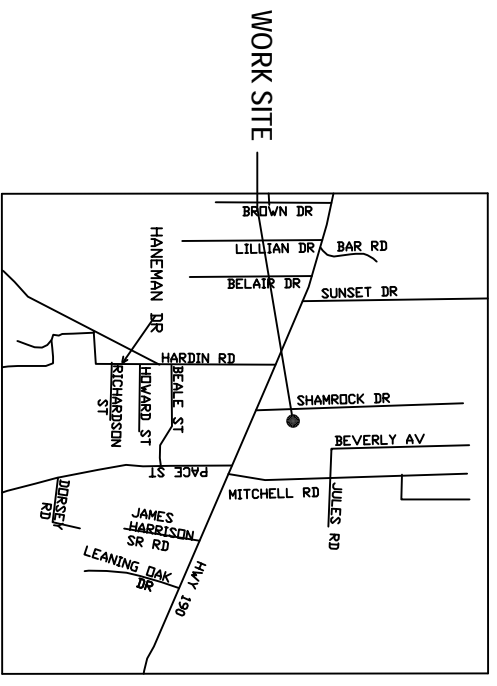
SITE PLAN
SCALE: 1"=20'-0"

TOTAL SQ. FT. 3279

LEGAL DESCRIPTION:

LOT 4, SHAMROCK VILLA ESTATES
 LOCATED NEAR THE CITY OF SLIDELL
 IN SECTION 18, T-9-S, R-15-E
 ST. TAMMANY PARISH
 LOUISIANA

U.S. HWY 190



INDEX OF DRAWINGS

DWG#	DRAWING NAME	REVISED
C-1	SITE PLAN	
S-1	FOUNDATION LAYOUT	
A-1	DETAILS AND NOTES	

SCALE: 1"=20' FILE: JOB NO. 1856 DATE: 4-9-07 SHEET C-1 OF	<p style="font-size: 24px; font-weight: bold;">DAMMON ENGINEERING. INC.</p> <p>1095 FLORIDA AVENUE 985-649-5832 SLIDELL, LA. 70458 DAMMONENGINEERING.COM</p>	<p>SITE PLAN</p> <p>LEROY COURSEULT HOME SHAMROCK DRIVE SLIDELL, LOUISIANA</p>
--	---	---