







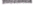

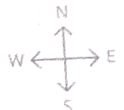
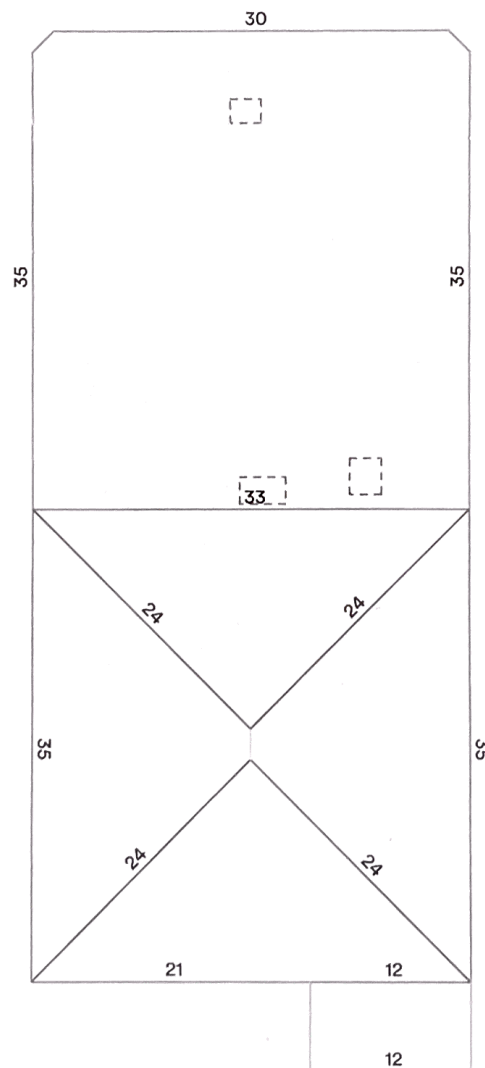


Length Measurement Report

1624 Hesiod Street, Metairie, Louisiana, United States

- | | | |
|---|---|---|
|  Eaves 135ft 4in |  Valleys 0ft 0in |  Hips 93ft 11in |
|  Ridges 2ft 3in |  Rakes 13ft 3in |  Wall Flashing 61ft 10in |
|  Step Flashing 0ft 0in |  Transitions 11ft 11in |  Parapet Wall 102ft 2in |
|  Unspecified 0ft 0in | | |



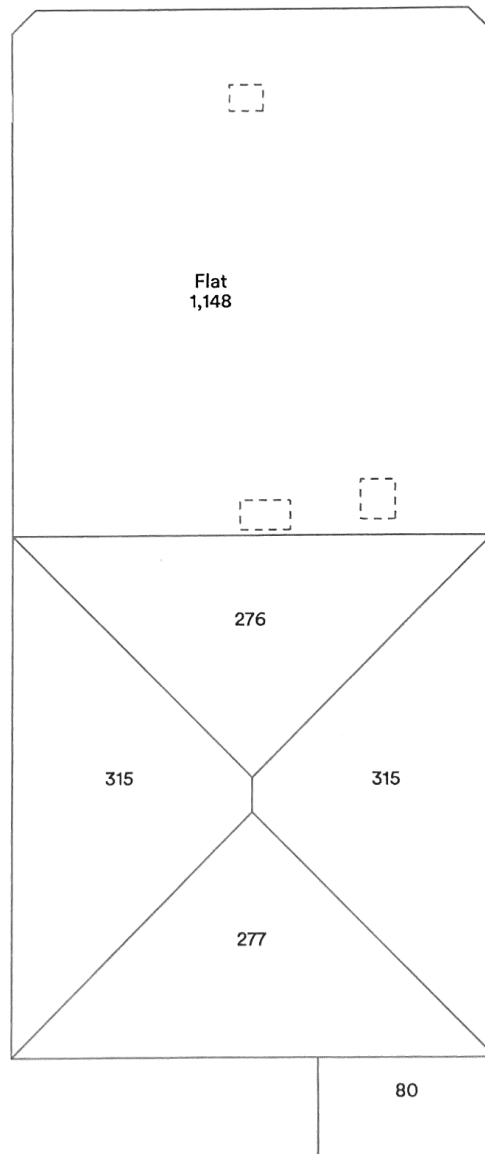
Note: The above diagram contains measurements that have been rounded up. 6 and 9 are written ●6 and ●9 to avoid confusion. Some edge length totals have been hidden from the diagram to avoid overcrowding. Flashings are depicted as dotted lines.

Area Measurement Report

1624 Hesiod Street, Metairie, Louisiana, United States

Total Roof Area: 2408 sqft
 Pitched Roof Area: 1260 sqft
 Flat Roof Area: 1148 sqft
 Two Story Area: 0 sqft
 Two Layer Area: 0 sqft

Predominant Pitch: 3/12
 Predominant Pitch Area: 1180 sqft
 Unspecified Pitch Area: 0 sqft



Note: The above diagram contains measurements rounded to the nearest whole number. The total at the top of the page is the sum of all the unrounded (exact) measurements, which is then rounded. Flashings are depicted as dotted lines. Deleted facets, which are not labeled with area, (Skylights, Chimneys, AC units) are omitted from area sums.

This report was prepared by Roofr. Copyright © 2022 Roofr.com | All rights reserved.