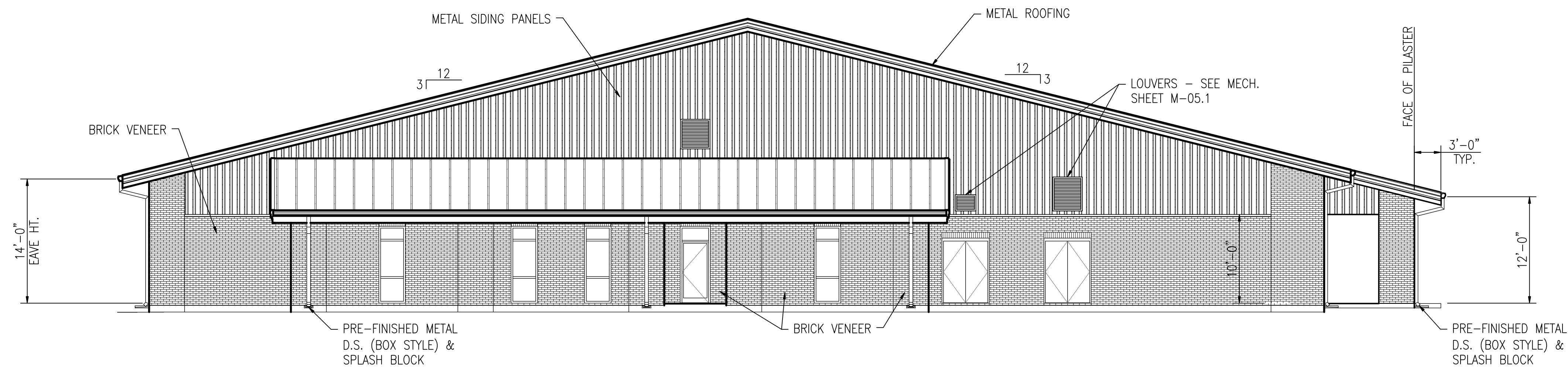


**ELEVATION - SOUTH**  
SCALE: 1/8" = 1'-0"  
A-02 **1**



**ELEVATION - WEST**  
SCALE: 1/8" = 1'-0"  
A-02 **2**

**BROADMOOR**  
BUILDING by DESIGN  
BROADMOOR, L.L.C.  
2740 North Amant Road  
Metairie, Louisiana 70002  
www.broadmoorllc.com

REV.	DESCRIPTION	DATE	APPROVED
0	FINAL DESIGN	07/29/09	P.S.

N/S JRB New Orleans  
Belle Chasse, Louisiana  
**NAVAIRSEFAC CALIBRATION BLDG.**  
EXTERIOR ELEVATIONS  
DATE: AUGUST 22, 2008  
EFD FOR COMMANDER, NAVFAC



ISSUED BY:  
Waldemar S. Nelson & Co.  
**FINAL DESIGN**  
29 / OCT / 2009

RECORD DRAWING DATE	05/27/09
CODE I.D. NO.	-
DRAWING SIZE:	<b>D</b>
SPEC. NO. 06-	-
CONSTRN. CONTR. NO.	-

NAVFAC DRAWING NO.  
150.30896  
SHEET 9 OF 26

**Nelson** WALDEMAR S. NELSON AND COMPANY  
INCORPORATED  
ENGINEERS AND ARCHITECTS  
1200 ST. CHARLES AVE. NEW ORLEANS, LA.

A-04