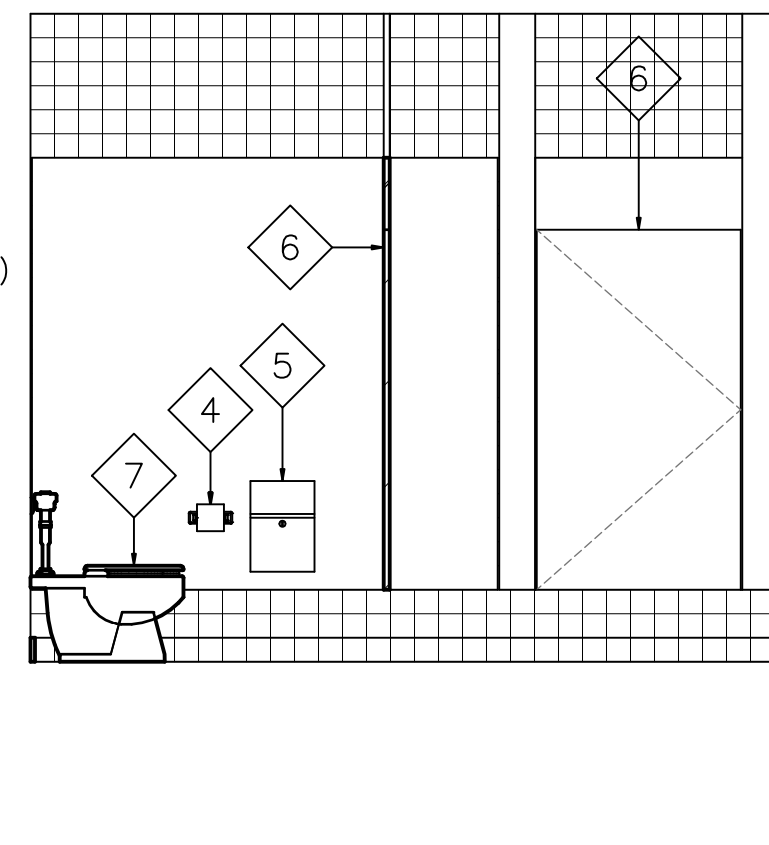
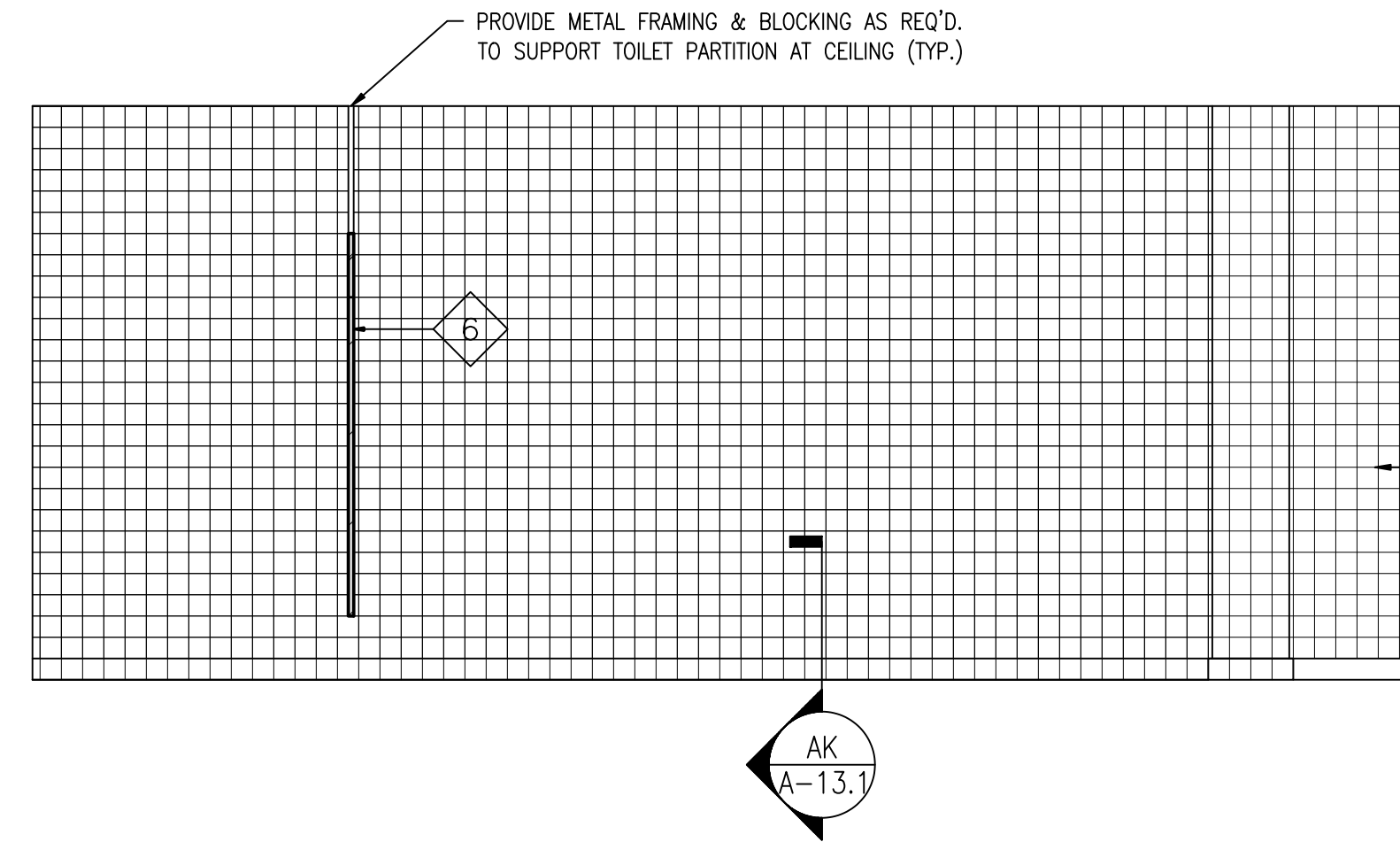


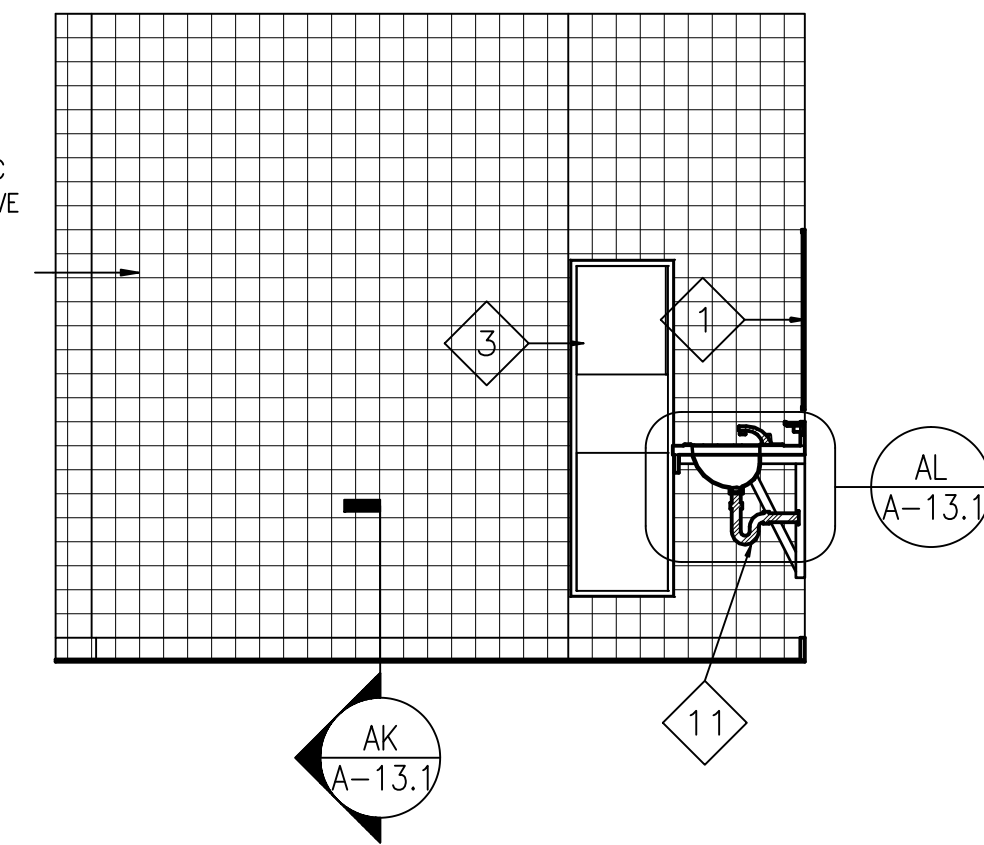
**ELEVATION 1**  
SCALE: 3/8" = 1'-0"  
A-13



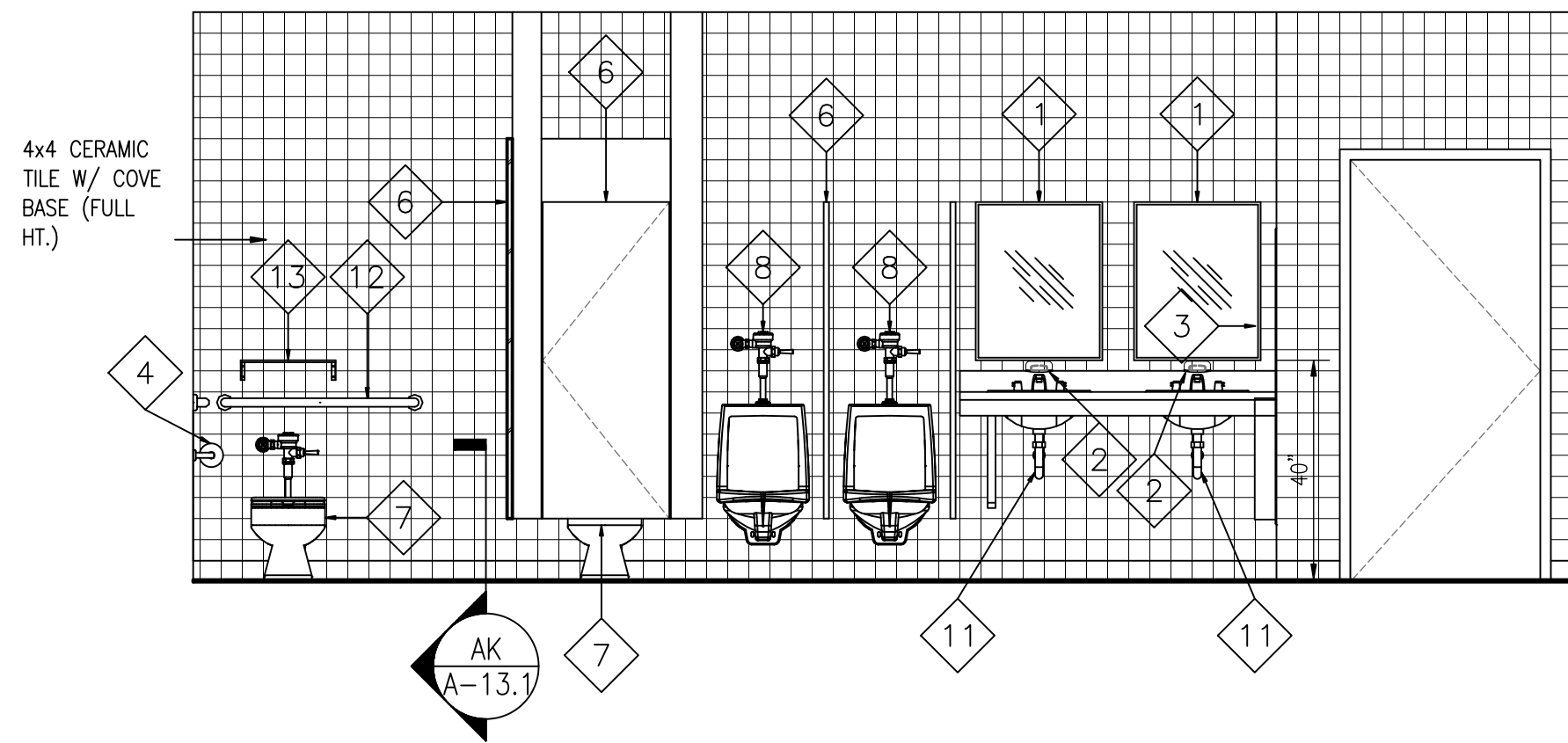
**ELEVATION 2**  
SCALE: 3/8" = 1'-0"  
A-13



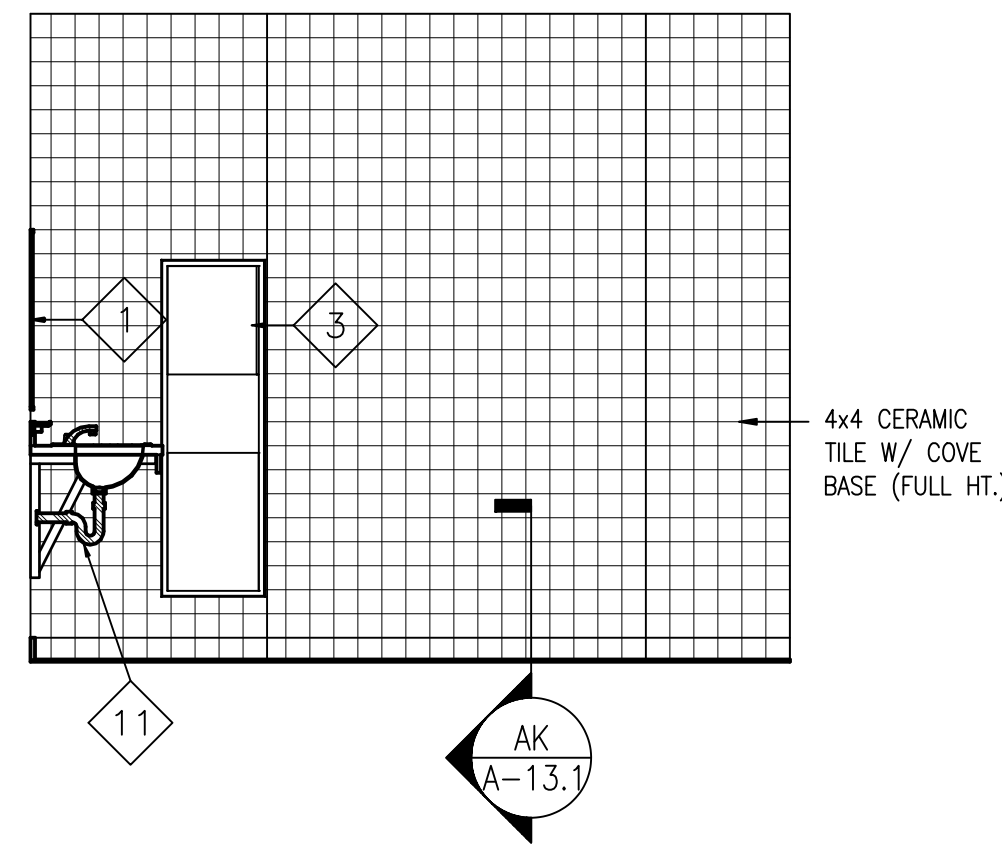
**ELEVATION 3**  
SCALE: 3/8" = 1'-0"  
A-13



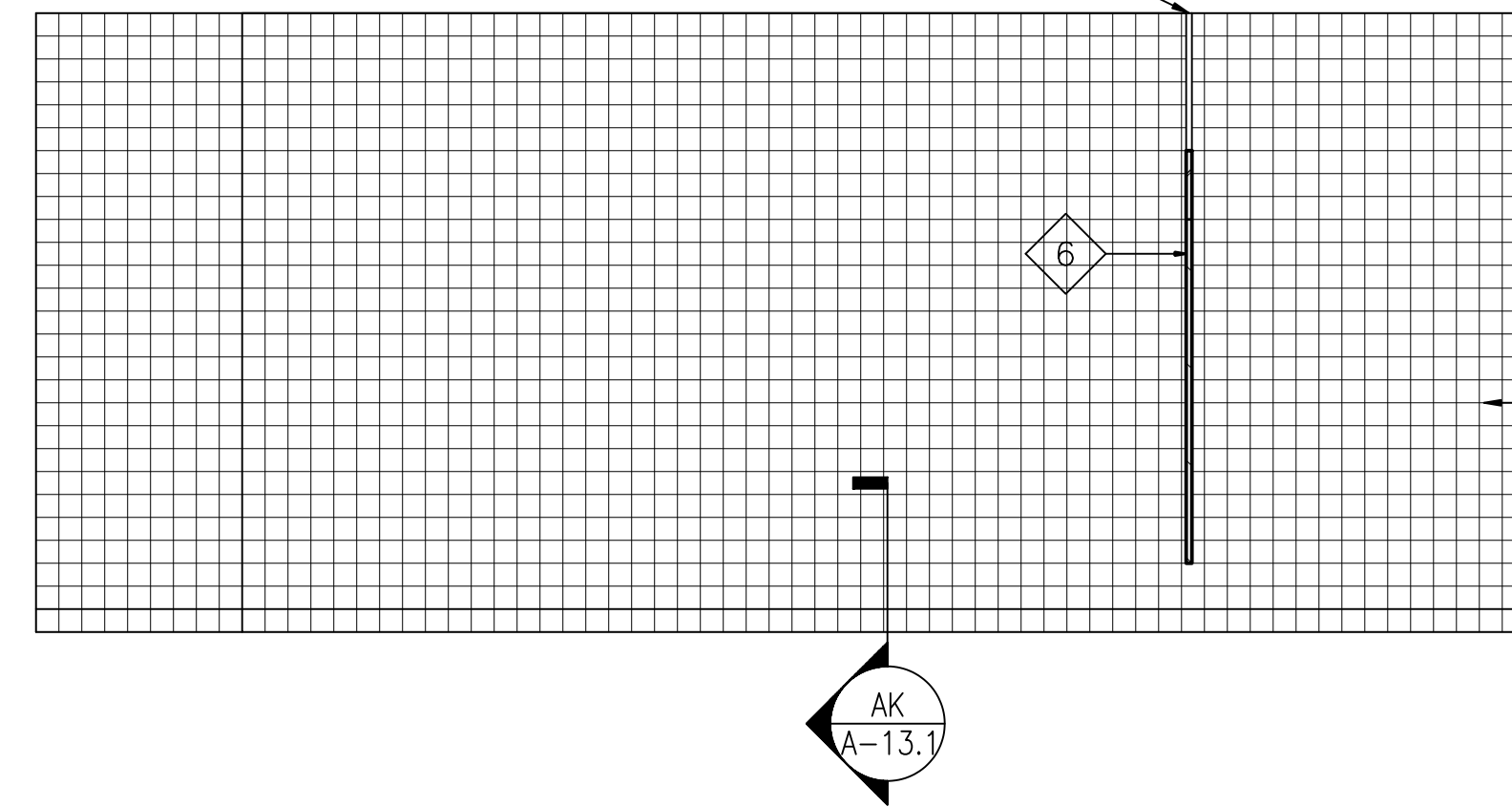
**ELEVATION 4**  
SCALE: 3/8" = 1'-0"  
A-13



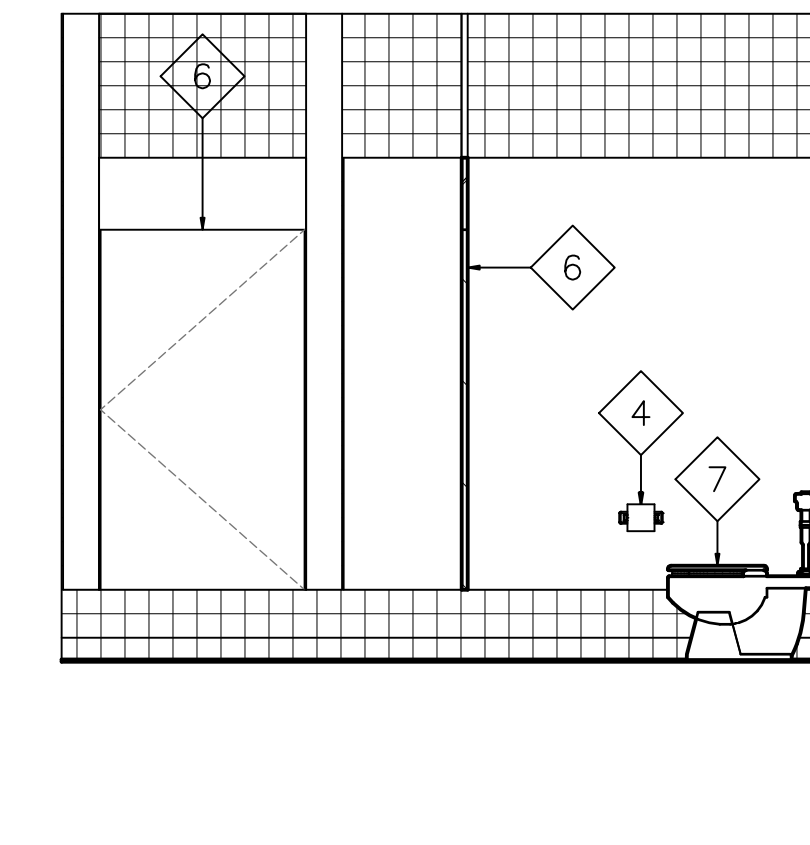
**ELEVATION 5**  
SCALE: 3/8" = 1'-0"  
A-13



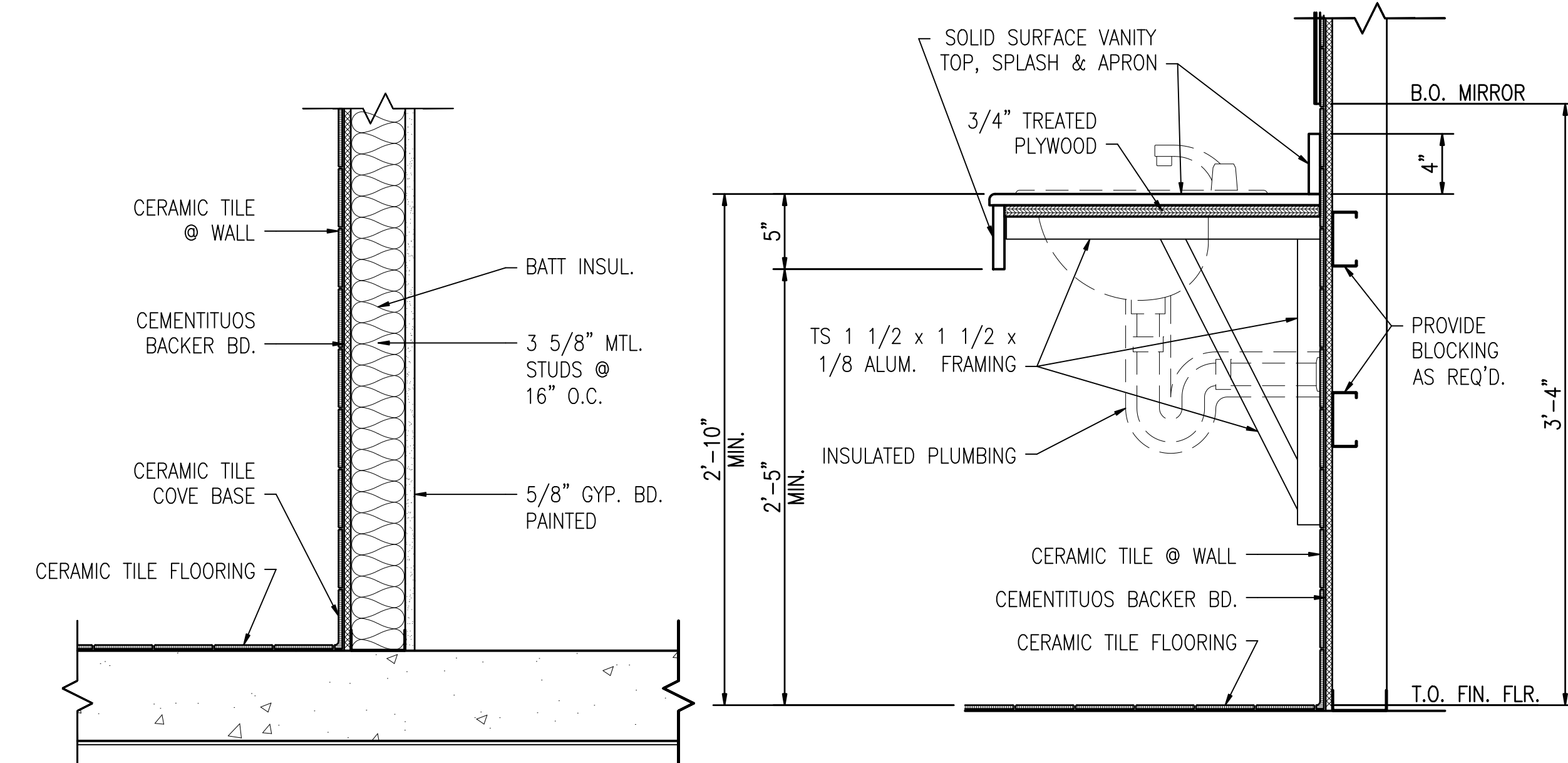
**ELEVATION 6**  
SCALE: 3/8" = 1'-0"  
A-13



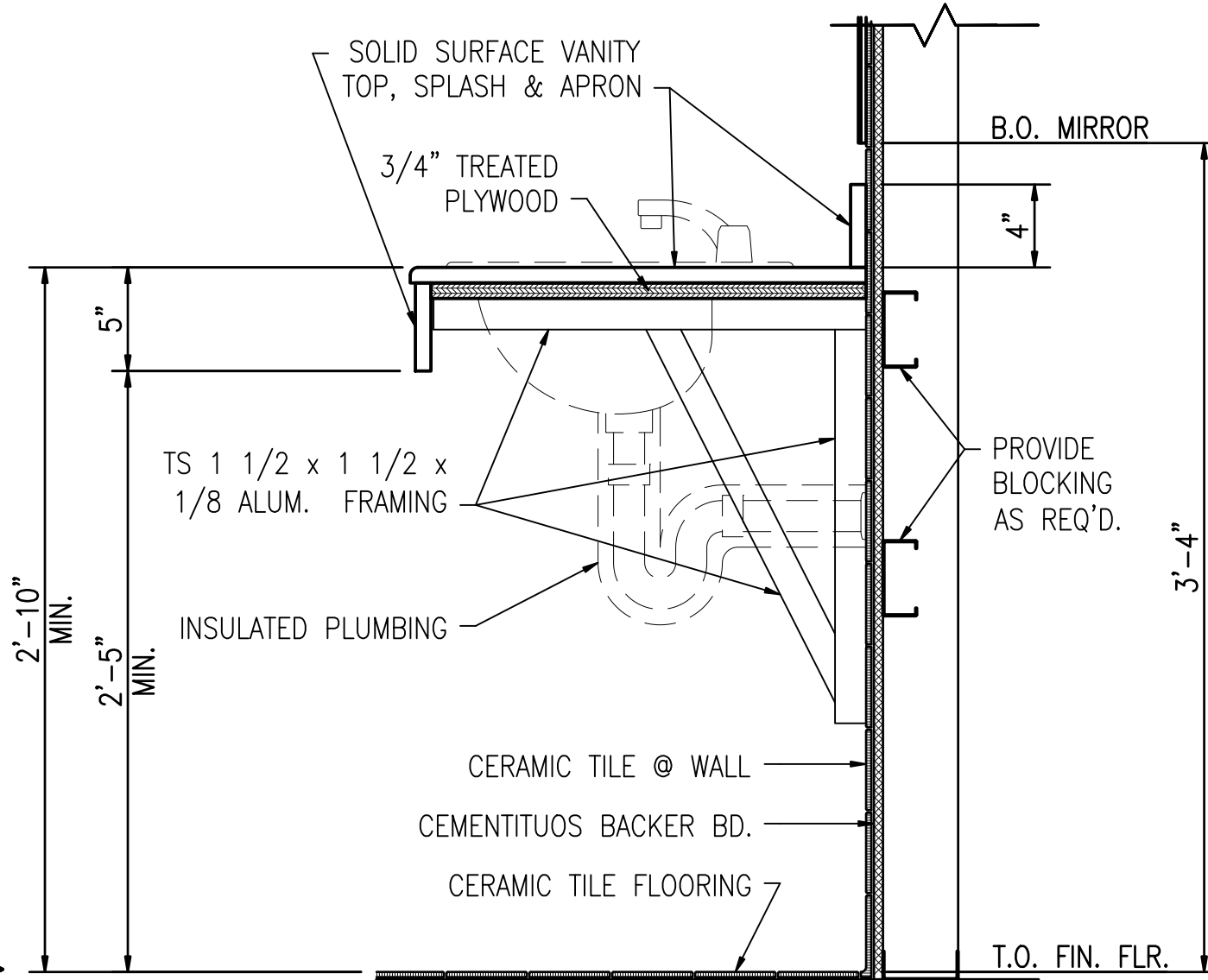
**ELEVATION 7**  
SCALE: 3/8" = 1'-0"  
A-13



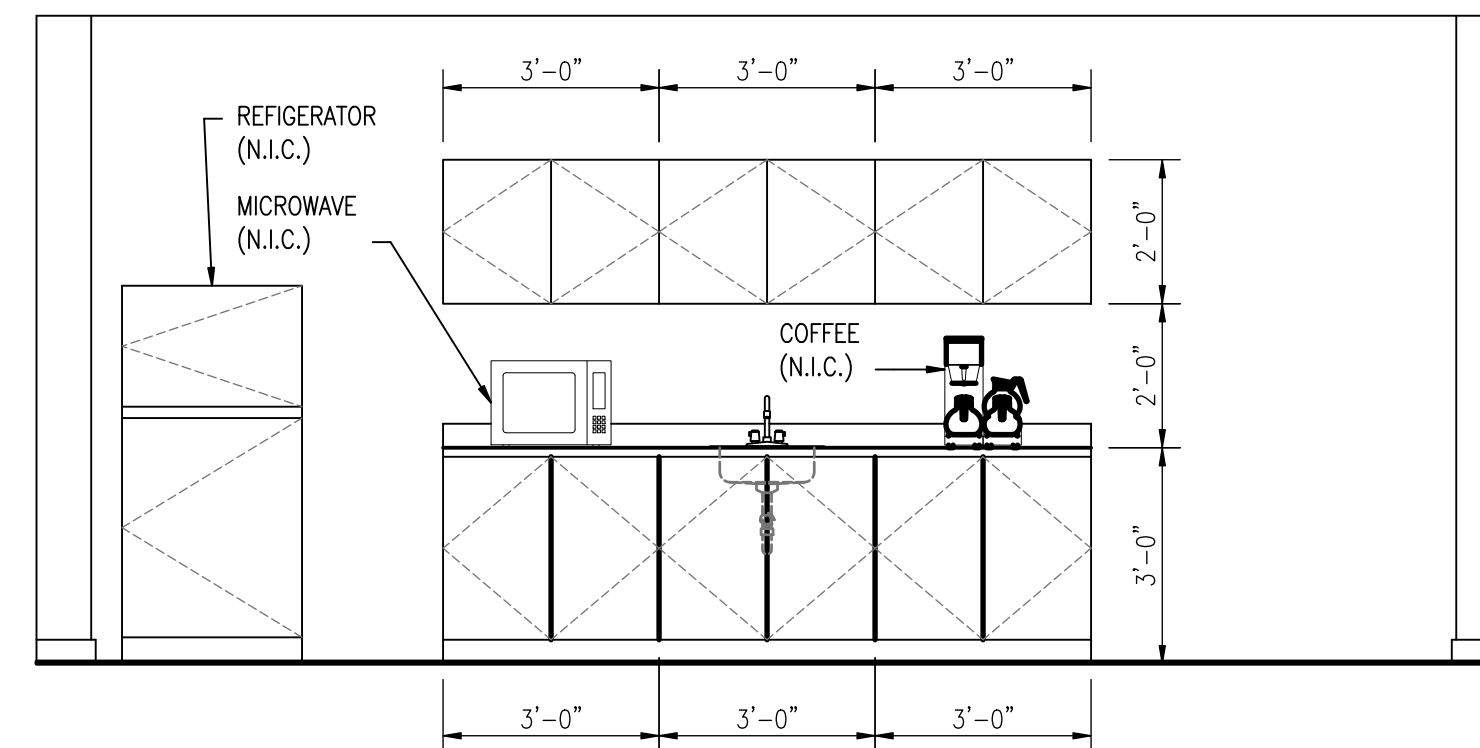
**ELEVATION 8**  
SCALE: 3/8" = 1'-0"  
A-13



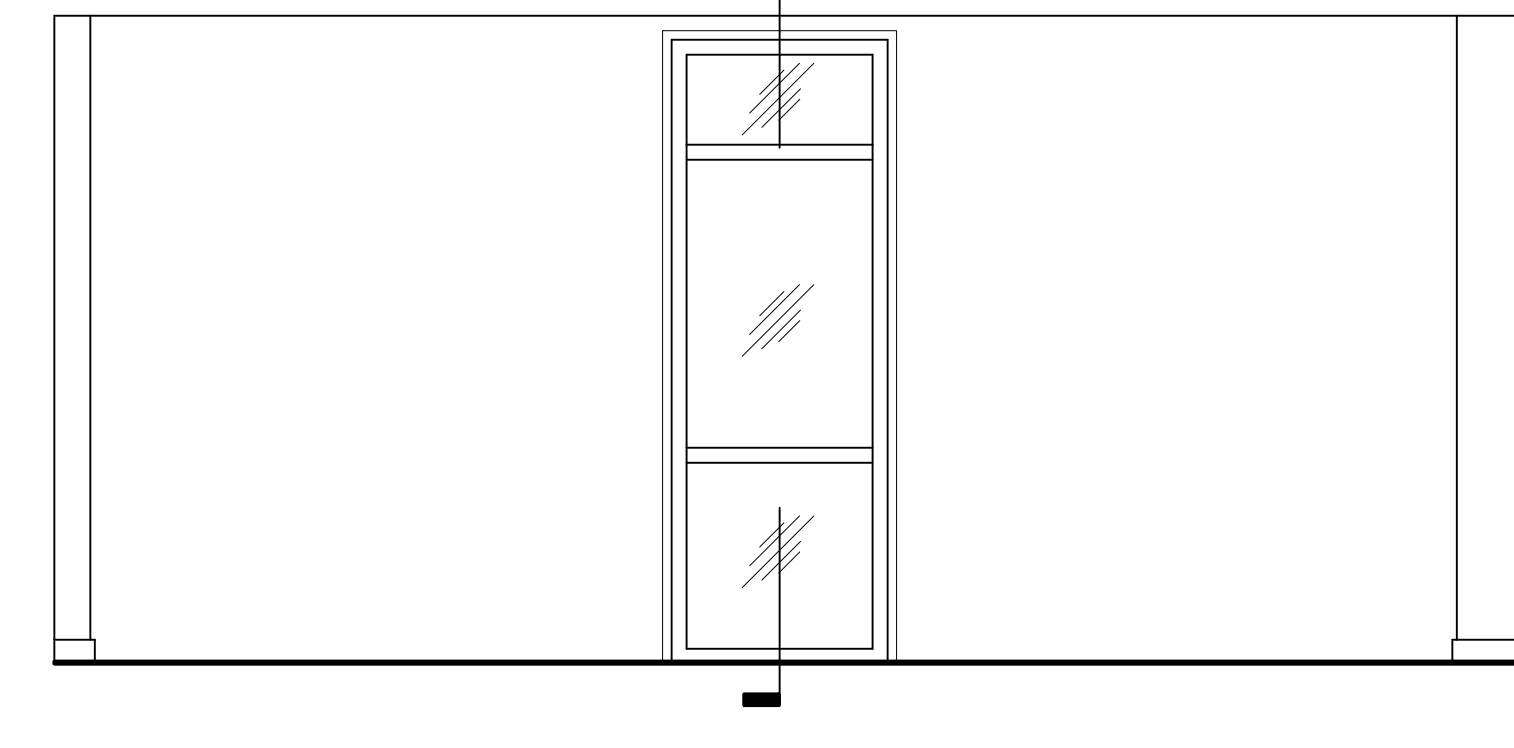
**SECTION AK**  
SCALE: 1 1/2" = 1'-0"  
A-13.1



**TYPICAL VANITY TOP DETAIL AL**  
SCALE: 1 1/2" = 1'-0"  
A-13.1



**ELEVATION 9**  
SCALE: 3/8" = 1'-0"  
A-13



**ELEVATION 9**  
SCALE: 3/8" = 1'-0"  
A-13

ISSUED BY:  
**Waldemar S. Nelson & Co.**  
**FINAL DESIGN**  
29 / OCT / 2009

**Nelson** WALDEMAR S. NELSON AND COMPANY  
ENGINEERS AND ARCHITECTS  
1200 ST. CHARLES AVE. NEW ORLEANS, LA.

**BROADMOOR**  
BUILDING by DESIGN  
BROADMOOR, L.L.C.  
2740 North Ancelet Road  
Metairie, Louisiana 70002  
www.broadmoorllc.com

REV.	DESCRIPTION	DATE	APPROVED
0	FINAL DESIGN	10/29/09	P.S.

N/S JRB New Orleans  
Belle Chasse, Louisiana  
**NAVARSEFAC CALIBRATION BLDG.**  
INTERIOR ELEVATIONS  
DATE: AUGUST 22, 2008  
ETD FOR COMMANDER, NAVFAC

**NAVFAC**  
Naval Facilities Engineering Command  
Southeast Division, Jacksonville, FL

RECORD DRAWING DATE	05/27/09
CODE I.D. NO.	-
DRAWING SIZE	<b>D</b>
SPEC. NO. 06	-
CONSTRN. CONTR. NO.	-
NAVFAC DRAWING NO.	150.309.10
SHEET 22 OF	<b>26</b>

A-13.1