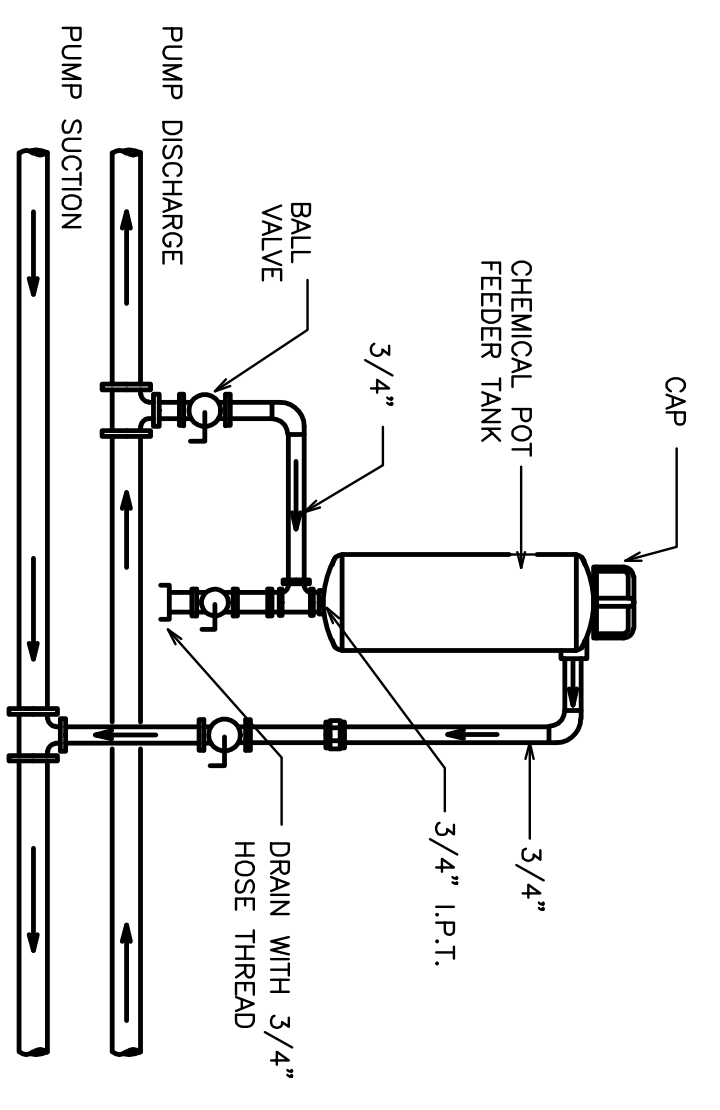


CHILL WATER SYMBOL LEGEND:

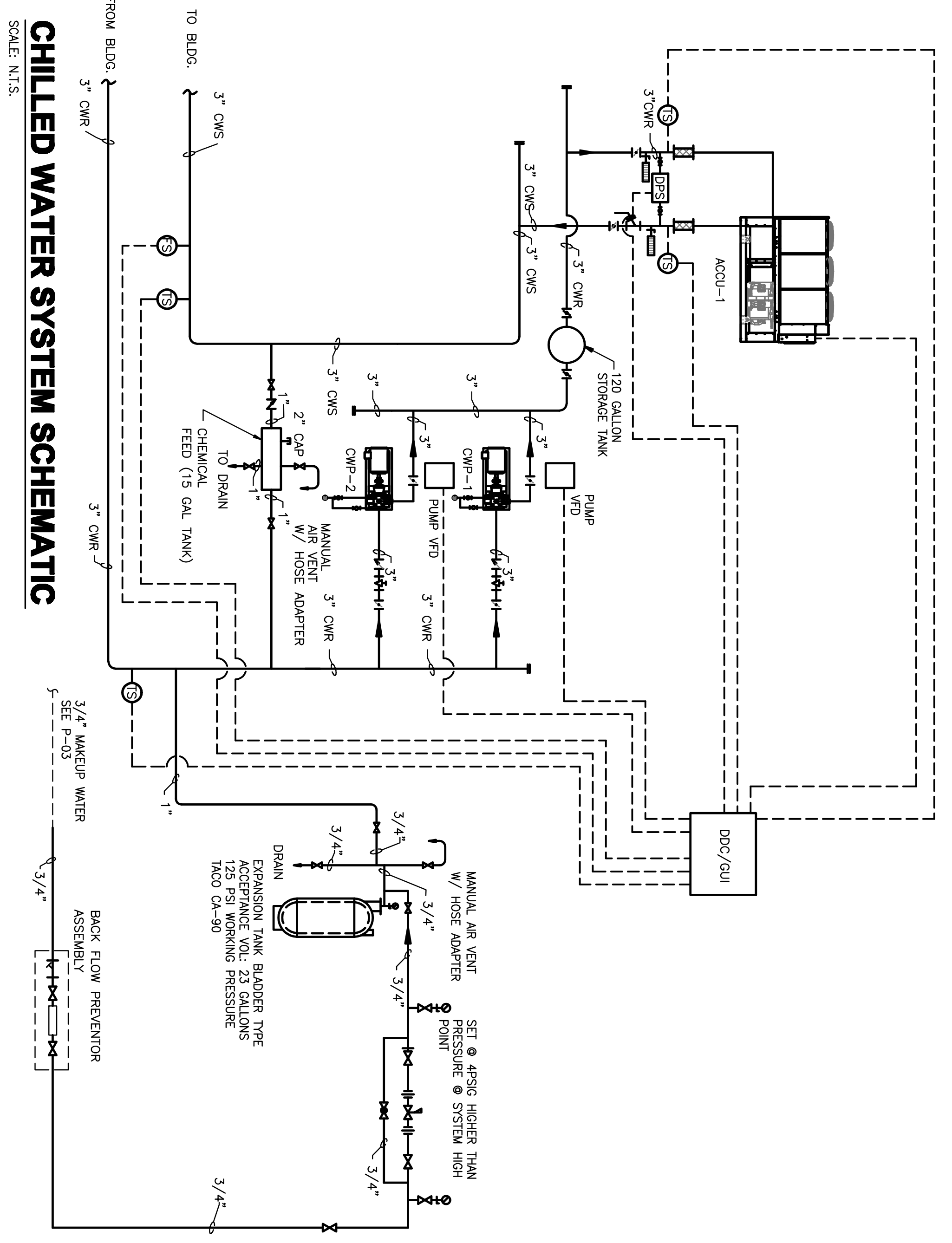
	MOTOR		Y-STRAINER W/VALVED DRAIN
	BUTTERFLY VALVE W/ACTUATOR (2 POSITION)		CIRCUIT SETTER/ISOLATION VALVE
	BUTTERFLY CONTROL VALVE W/POSITIONER (MODULATION)		DIFFERENTIAL PRESSURE SENSOR
	PUMP-DOUBLE BOWL W/DOUBLE MOTOR		FLEXIBLE CONNECTION
	CHECK VALVE		PLUG VALVE (BALANCE)
	GATE VALVE		CONDUCTIVITY SENSOR
	GLOBE VALVE		WATER METER
	CONTROL VALVE		FLOW SENSOR
	BALL VALVE W/ACTUATOR		PRESSURE SWITCH
	TEMPERATURE INDICATOR		BALL VALVE
	PRESSURE GAUGE		P/T PLUG
	TEMPERATURE SENSOR		TRIPLE DUTY VALVE
	CHILL WATER SUPPLY		
	CHILL WATER RETURN		
	PRIMARY CHILL WATER SUPPLY		
	PRIMARY CHILL WATER RETURN		
	HEATING HOT WATER SUPPLY		
	HEATING HOT WATER RETURN		



- NOTE:**
1. INSTALL TOP OF CHEMICAL POT FEEDER TANK NOT MORE THAN 3'-0" ABOVE FLOOR.
 2. TANK SHALL BE 5 GALLON CAPACITY SIZE ON CHILLED WATER SYSTEMS OF 300 TONS AND LARGER. TANK SHALL BE 2-1/2 GALLON CAPACITY SIZE ON CHILLED WATER SYSTEMS UNDER 300 TONS AND ALL HOT WATER SYSTEMS.

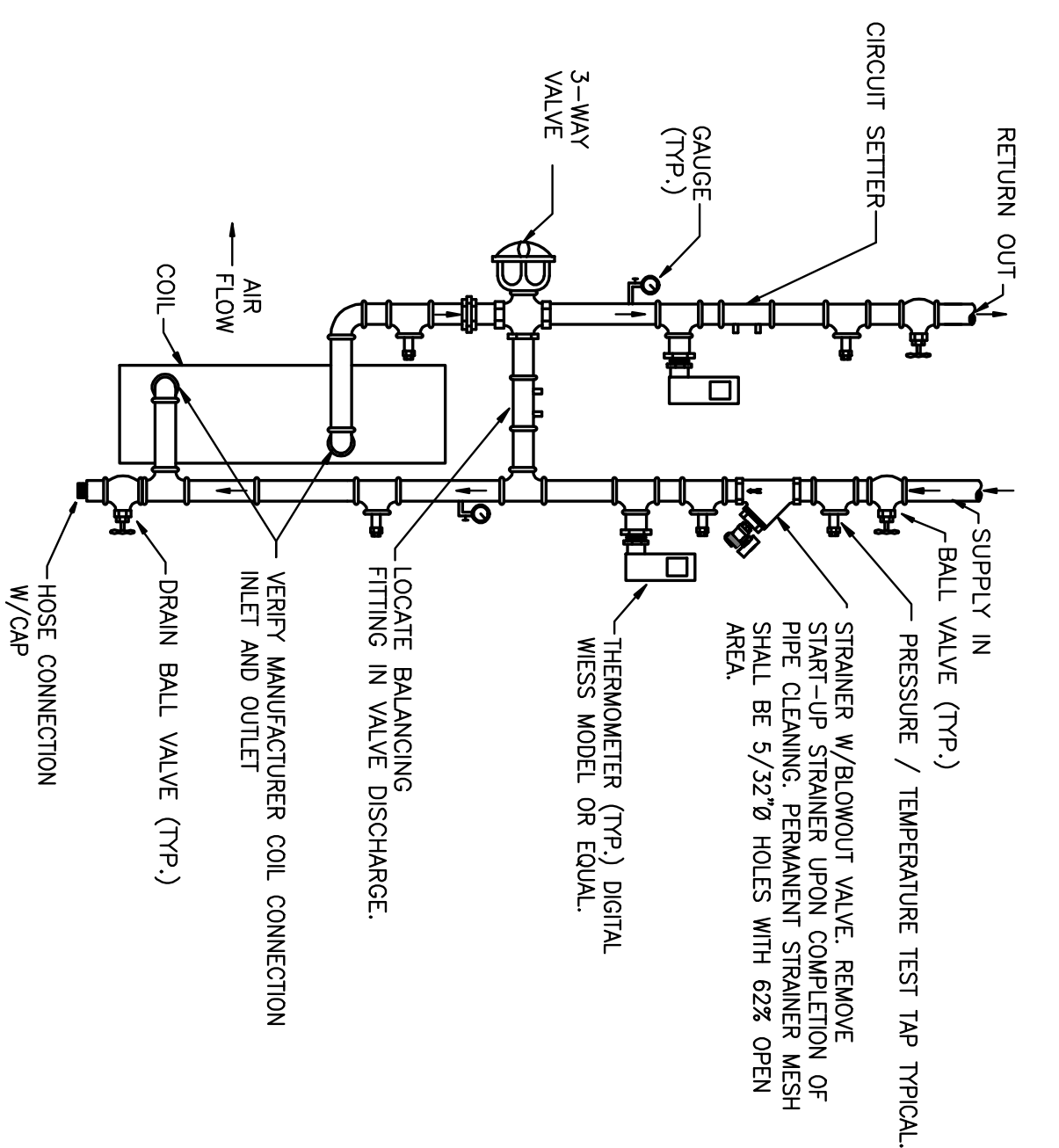
CHEMICAL TANK DETAIL

SCALE: N.T.S.



CHILLED WATER SYSTEM SCHEMATIC

SCALE: N.T.S.



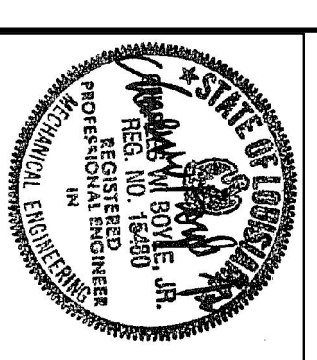
TYPICAL AHU COOLING/HEATING COIL PIPING HOOK-UP DETAIL

SCALE: N.T.S.

HUSEMAN & Associates
 3927 N. I-10 SERVICE RD. (504) 456-3119
 SUITE 2019 METairie, LA 70002 FAX (504) 566-1122
 Job No. 090301 Designed By: CB
 Drawn By: RP

WALDEMAR S. NELSON AND COMPANY
 ENGINEERS AND ARCHITECTS
 1200 ST. CHARLES AVE. NEW ORLEANS, LA.

RECORD DRAWING DATE	
CODE ID NO.	003
DRAWING SIZE	D
SPEC. NO. OR -	
CONSTRN. CONTR. NO.	
NAVFAC DRAWING NO.	100041
SHEET	12 OF 15
W-	06.1



NAVFAC
 Naval Facilities Engineering Command
 Southeast Division, Jacksonville, FL

NAS JRB New Orleans	Belle Chase, Louisiana
NAVAIRSEFAC CALIBRATION BLDG. HVAC CHILLED WATER PIPING SCHEMATIC	
APPROVED	DATE: AUGUST 22, 2008
	EFD FOR COMMANDER, NAVFAC

DRAWING REVISIONS				
REV.	DESCRIPTION	PREP BY	DATE	APPRD.
0	FINAL DESIGN	RP	10/29/09	CB

BROADMOOR
 BUILDING by DESIGN
 BROADMOOR, L.L.C.
 2740 North Amick Road
 Metairie, Louisiana 70002
 www.broadmoorllc.com