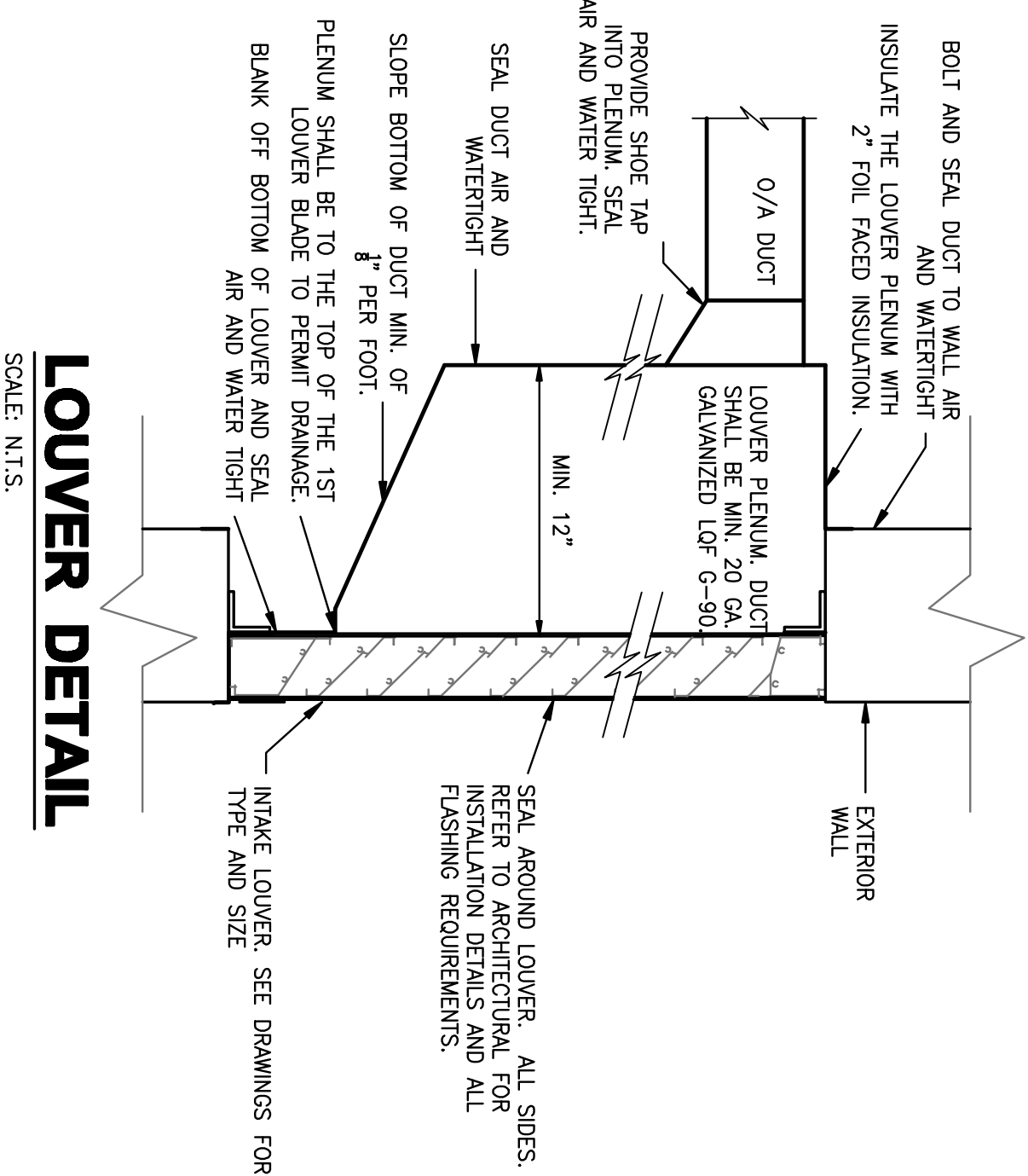
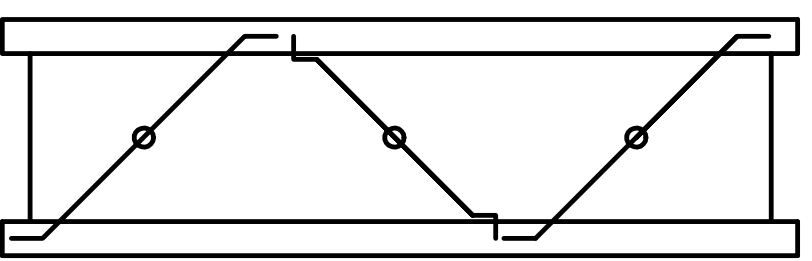


CONDENSATE DRAIN LINE
SCALE:N.T.S.

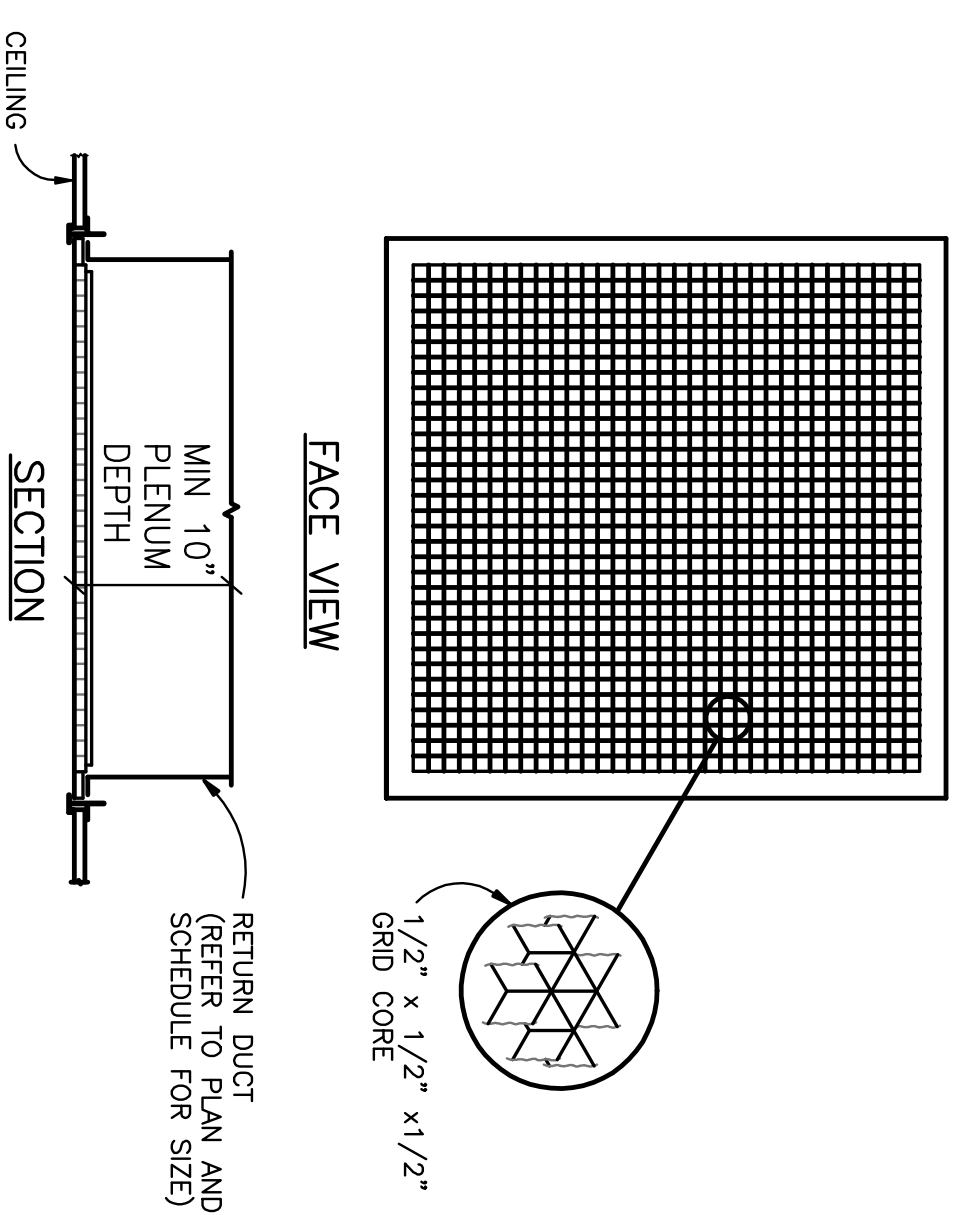


LOUVER DETAIL
SCALE: N.T.S.



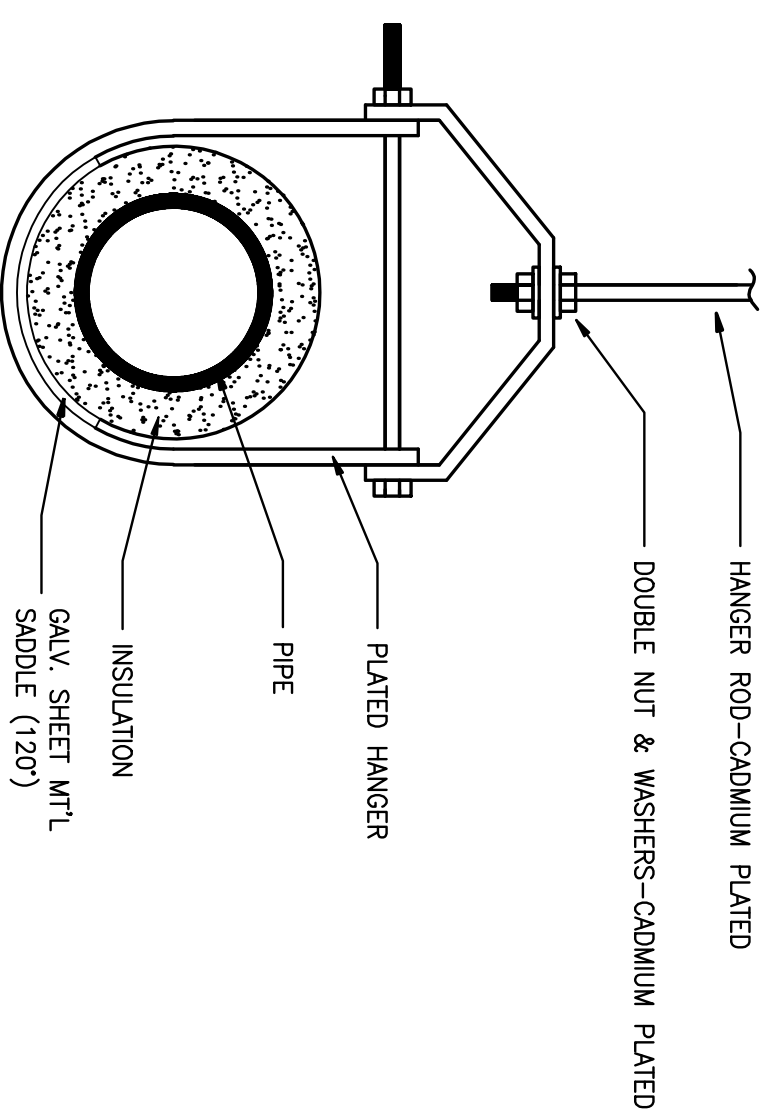
CALIBRATION LAB BRANCH DUCT RETURN AIR DAMPER DETAIL
SCALE: N.T.S.

- NOTES**
1. ALL DAMPERS FOR THE CALIBRATION LABS SHALL BE 3 BLADE OPPOSED.
 2. ONLY THE OXYGEN LAB WILL HAVE A MODULATING CONTROL MOTORIZED DAMPER.

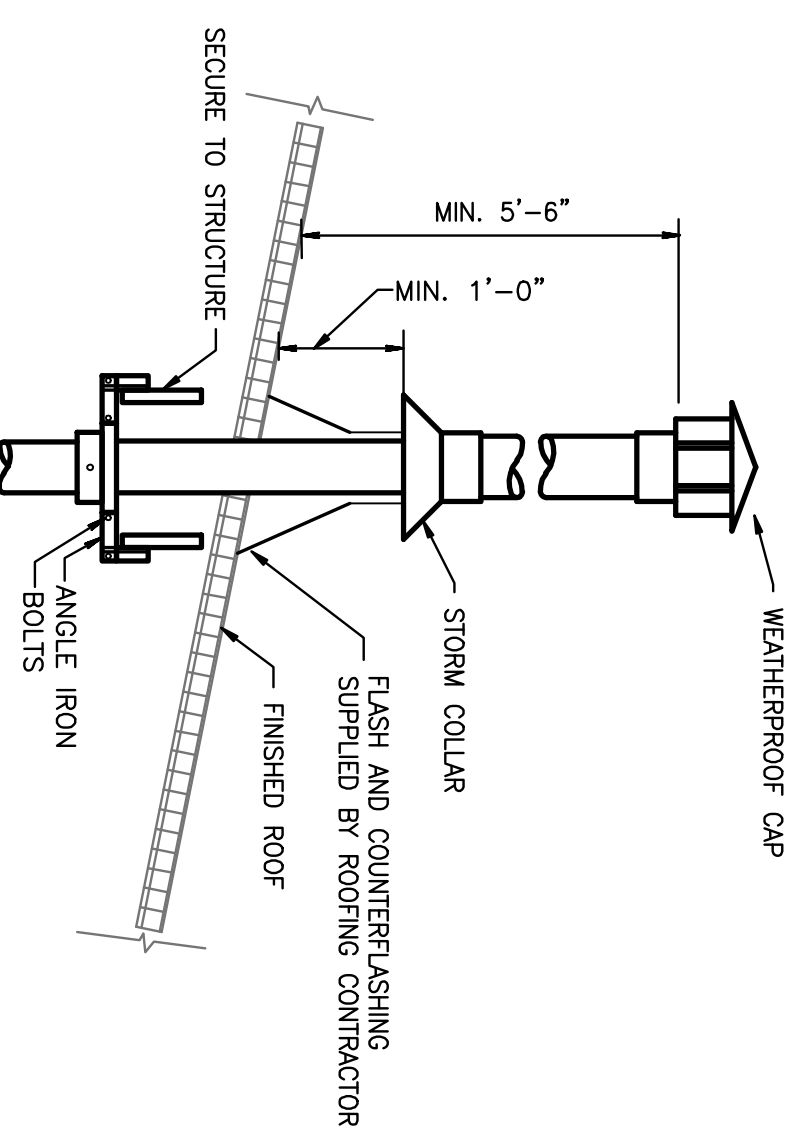


- NOTES**
1. FULL FACE WITH FRAME FOR LAY-IN CEILING.
 2. NOT USED.
 3. SIZE VARIES, REFER TO PLANS.
 4. REFER TO ARCHITECTURAL DRAWINGS FOR EXACT CEILING SYSTEM DETAILS.

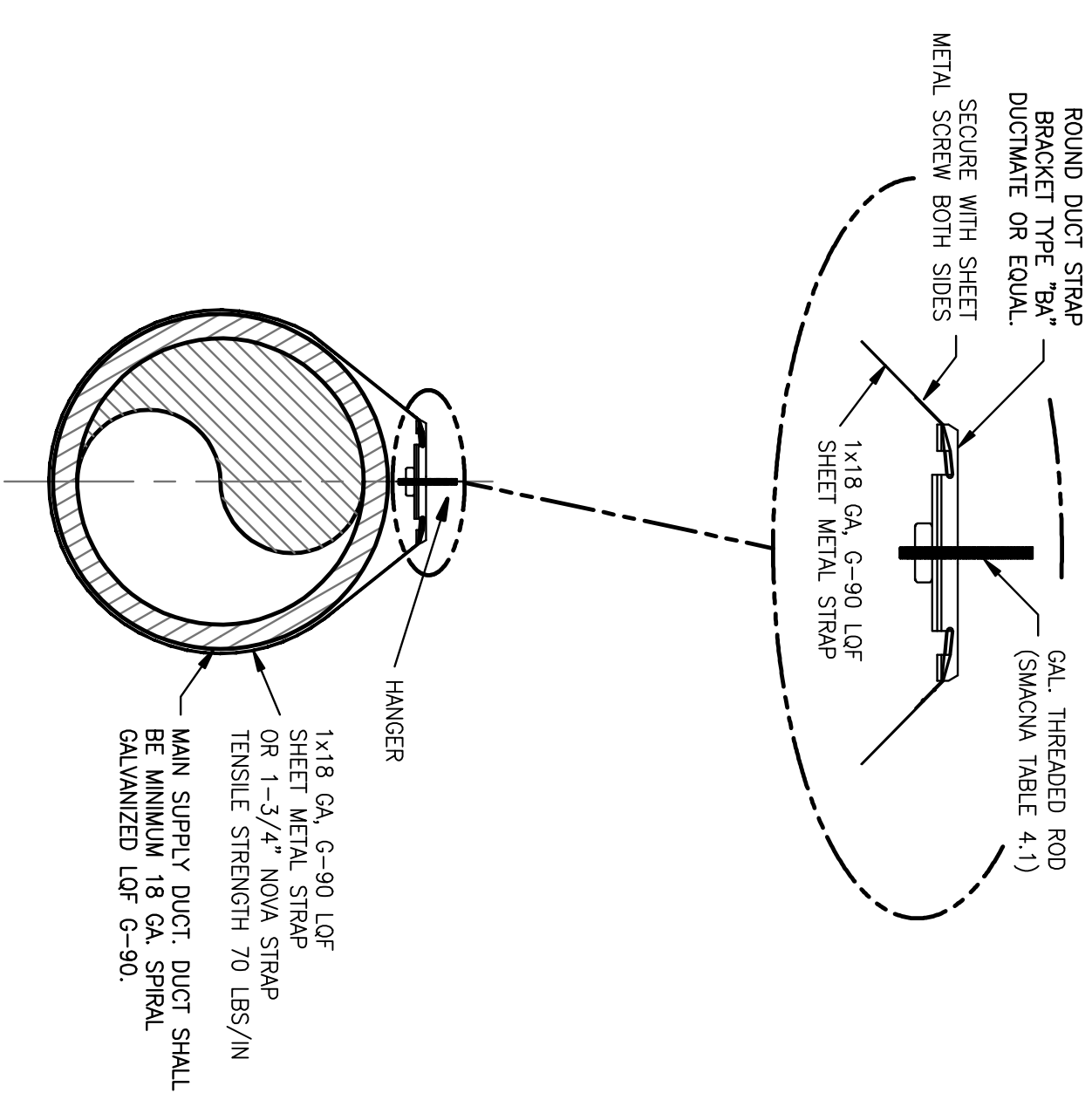
RETURN AIR GRILLE DETAIL
SCALE: N.T.S.



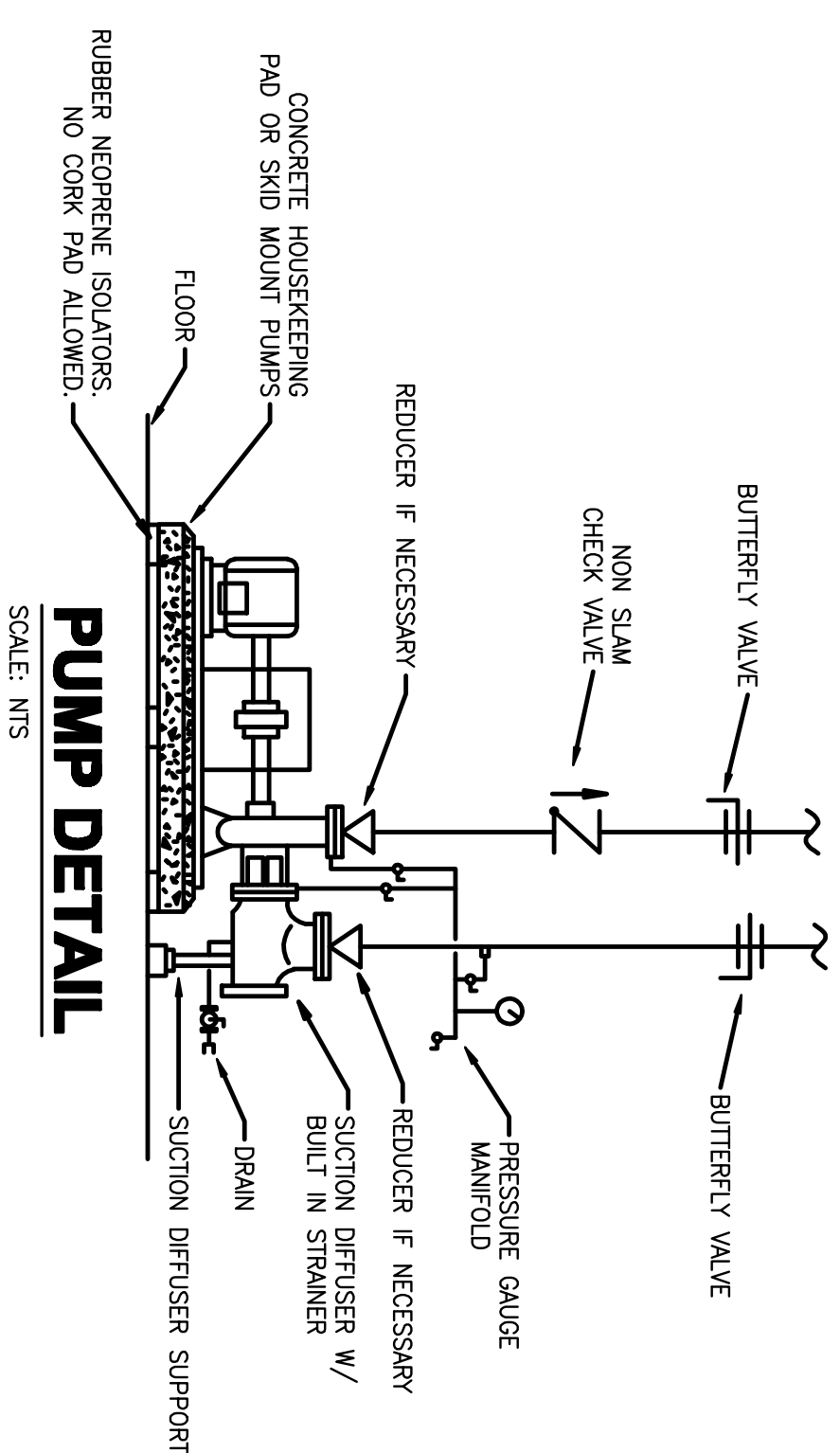
CHILL WATER SUPPLY & RETURN 6" PIPE & SMALLER
SCALE: N.T.S.



BOILER & WATER HEATER FLUE DETAILS
SCALE:N.T.S.



SPIRAL DUCT DETAIL
SCALE: N.T.S.



PUMP DETAIL
SCALE: N.T.S.

DRAWING REVISIONS				
REV.	DESCRIPTION	PREP BY	DATE	APPRD.
0	FINAL DESIGN	RP	10/29/09	CB

BROADMOOR
BUILDING by DESIGN
BROADMOOR, L.L.C.
2740 North Amick Road
Metairie, Louisiana 70002
www.broadmoorllc.com

NAS JRB New Orleans Belle Chase, Louisiana
NAVAIRSEFAC CALIBRATION BLDG.
HVAC DETAILS – SHEET 2 OF 2
APPROVED DATE: AUGUST 22, 2008 EPD FOR COMMANDER, NAVFAC

NAVFAC
Naval Facilities Engineering Command
Southeast Division, Jacksonville, FL

STATE OF LOUISIANA
OFFICE OF THE ARCHITECT
PROFESSIONAL REGISTER
1200 N. GULF BLVD., SUITE 100
NEW ORLEANS, LA 70119
PH: 504.581.1222
FAX: 504.581.1222

HUSEMAN & Associates
ARCHITECTURAL & MECHANICAL PLUMBING ENGINEERING
3925 N. I-10 SERVICE ROAD
SUITE 2019, METairie, LA 70002
JOB No. 0903001
Drawn By: RP
Designed By: AB
Checked By: GB

RECORD DRAWING DATE: 10/29/09
CODE ID NO.: 1009
DRAWING SIZE: D
SPEC. NO. OR: -
CONSTRN. CONTR. NO.:
NAVFAC DRAWING NO.: 120024-15
SHEET 19 OF 15
M-08.1

WALDEMAR S. NELSON AND COMPANY
ENGINEERS AND ARCHITECTS
1200 ST. CHARLES AVE.
NEW ORLEANS, LA