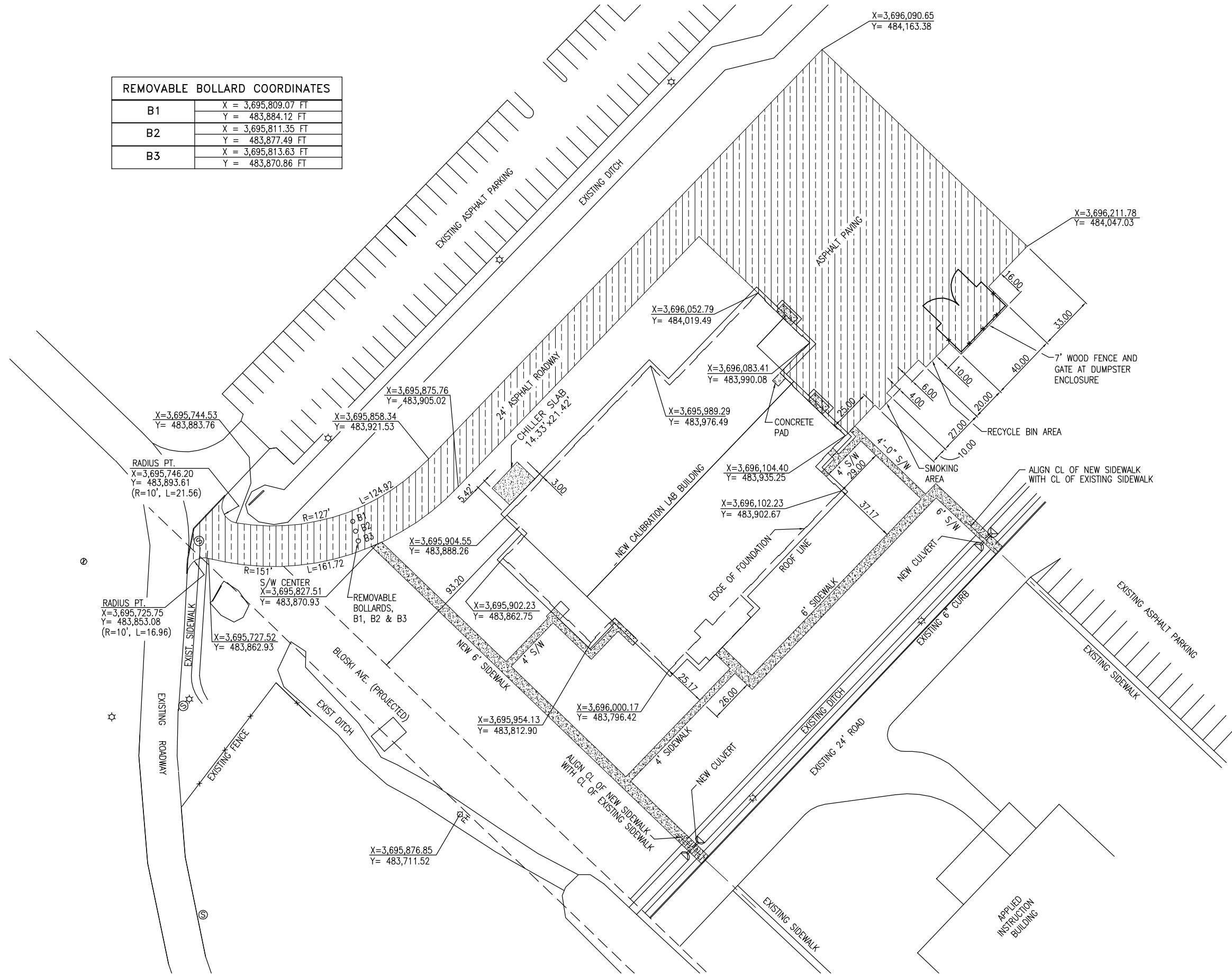


REMOVABLE BOLLARD COORDINATES

B1	X = 3,695,809.07 FT Y = 483,884.12 FT
B2	X = 3,695,811.35 FT Y = 483,877.49 FT
B3	X = 3,695,813.63 FT Y = 483,870.86 FT

LEGEND

- EXISTING STREET LIGHT
- EXISTING DRAIN MANHOLE
- EXISTING SANITARY SEWER MANHOLE
- NEW FIRE HYDRANT
- NEW ASPHALT PAVING
- NEW CONCRETE PAVING
- NEW FENCE



WALDEMAR S. NELSON AND COMPANY
ENGINEERS AND ARCHITECTS
1200 ST. CHARLES AVE. NEW ORLEANS, LA.

DESIGNER: XXX
DRAWN BY: XXX
REVIEWER: XXX

PROJECT LEADER: RH
SUBMITTED BY: XXX
NAVFAC TECHNICAL LEAD: XXX
P.P.E.: XXX

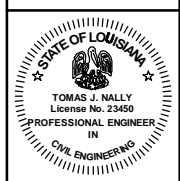
DRAWING REVISIONS

REV.	DESCRIPTION	DATE	APPROV.
0	FINAL DESIGN	10/29/09	LN

NAS JRB NEW ORLEANS BELLE CHASSE, LOUISIANA

NAVFAC CALIBRATION BLDG.
CIVIL SITE PLAN

DATE: AUGUST 22, 2008
ED FOR COMMANDER, NAVFAC



ISSUED BY:
Waldemar S. Nelson & Co.
FINAL DESIGN
29 /OCT /2009

RECORD DRAWING DATE	08-22-2008
CODE LD. NO.	-
DRAWING SIZE:	D
SPEC. NO.06	-
CONSTRN. CONTR. NO.	-

NAVFAC DRAWING NO.	15030867
SHEET	1 OF 4

