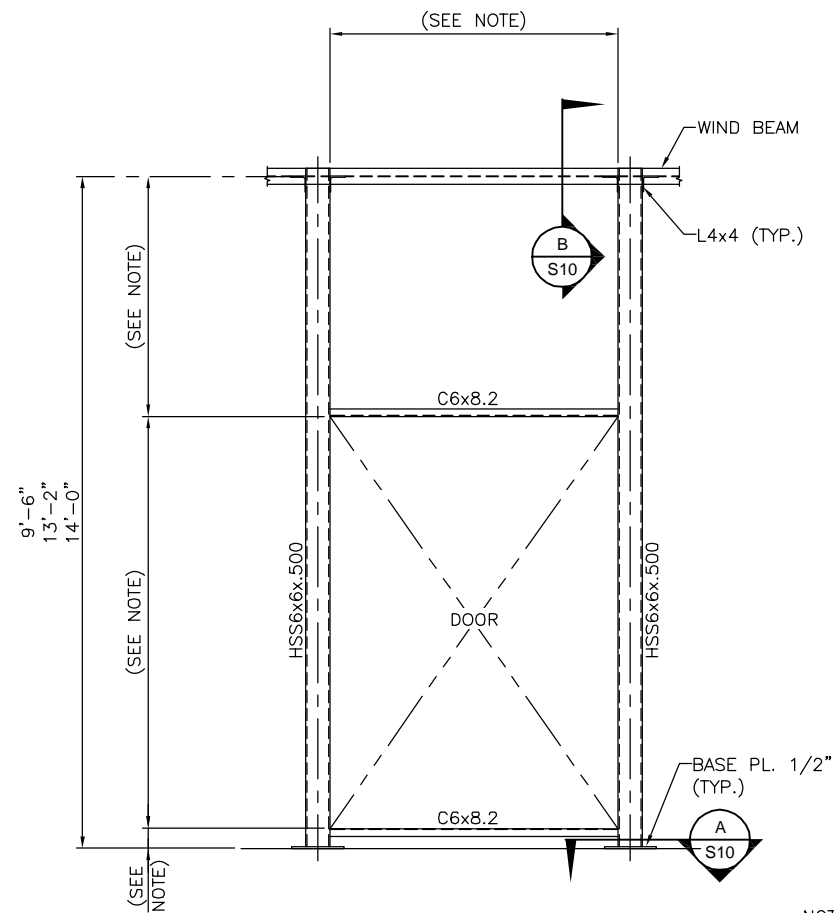


- NOTE:**
1. FOR DIMENSIONS NOT SHOWN SEE WINDOW SCHEDULE ON DWG. A-015.
 2. WINDOW FASTENERS SHALL BE 12-24x2" T-5 SCREWS SPACED @ 18" O/C.



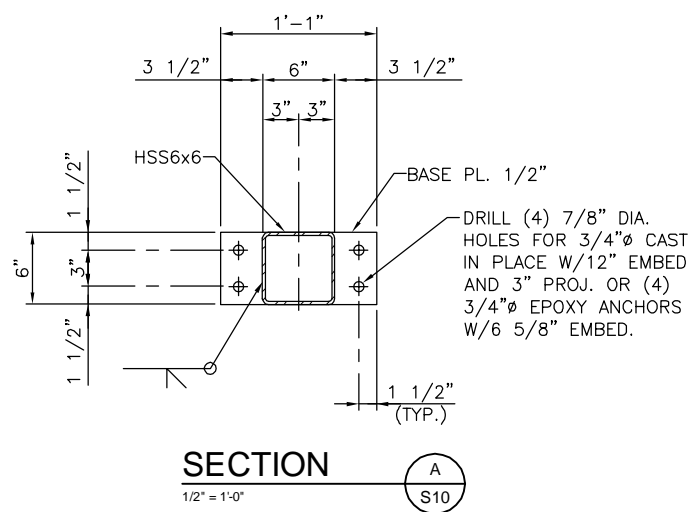
- NOTE:**
1. FOR DIMENSIONS NOT SHOWN SEE DOOR SCHEDULE ON DWG. A-014.
 2. DOOR FASTENERS SHALL BE 12-24x2" T-5 SCREWS SPACED @ 9" O/C.
 3. BLAST RESISTANT FRAMING IS REQUIRED ONLY AT GLASS DOORS.

BLAST RESISTANT WINDOW FRAMING DETAIL

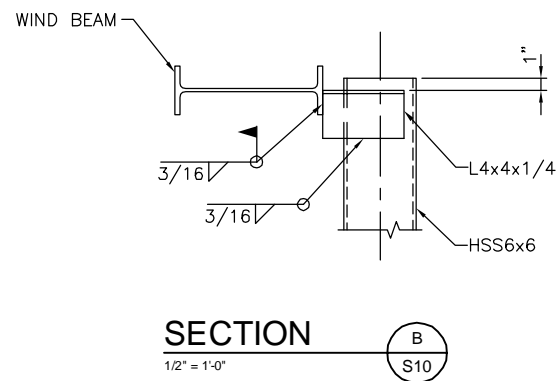
1/2" = 1'-0"

BLAST RESISTANT DOOR FRAMING DETAIL

1/2" = 1'-0"



SECTION A
1/2" = 1'-0"



SECTION B
1/2" = 1'-0"

NOTE:
ALL HOT ROLLED STRUCTURAL STEEL SHALL RECEIVE TWO COATS OF PRIMING.

ISSUED BY:
Waldemar S. Nelson & Co.
FINAL DESIGN
29 /OCT /2009

WALDEMAR S. NELSON AND COMPANY
ENGINEERS AND ARCHITECTS
1200 ST. CHARLES AVE NEW ORLEANS, LA.

BROADMOOR
BUILDING by DESIGN
BROADMOOR, L.L.C.
2740 North Amoult Road
Metairie, Louisiana 70002
www.broadmoorllc.com

REV.	DESCRIPTION	PREP. BY	DATE	APPROV.
0	FINAL DESIGN - 10/29/09	BW	10/29/09	

MS-JRB New Orleans Belle Chasse, Louisiana
NAVAIRSEFAC CALIBRATION BLDG.
BLAST RESISTANT DETAILS
ED FOR COMMANDER, NAVFAC

NAVFAC
Naval Facilities Engineering Command
Southern Division, Charleston, SC

STATE OF LOUISIANA
TOMAS J. MALLY
License No. 23459
PROFESSIONAL ENGINEER
IN
CIVIL ENGINEERING

RECORD DRAWING DATE	5/6/09
CODE I.D. NO.	-
DRAWING SIZE:	D
SPEC. NO. 06-	-
CONSTR. CONTR. NO.	N62467-
NAVFAC DRAWING NO.	15030885
SHEET	12 OF 12

S10