

#10 - 2" DISCONNECT (MALE)

#6 - 2" POLYCOM TRANSITION HDPE TO STAINLESS

2" SDR-11 22½° TO 34° BEND IN FIELD

10" SDR-17 HDPE

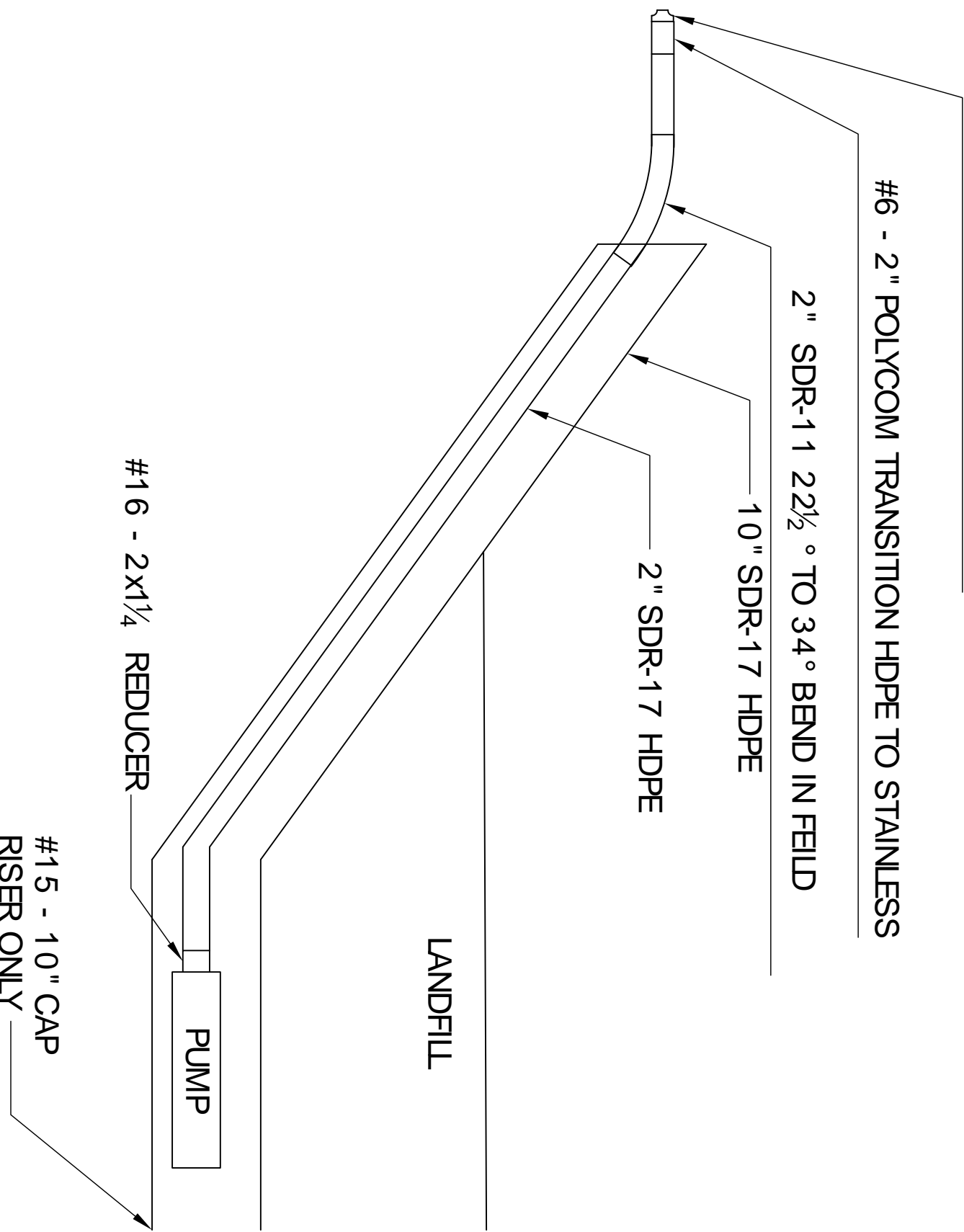
2" SDR-17 HDPE

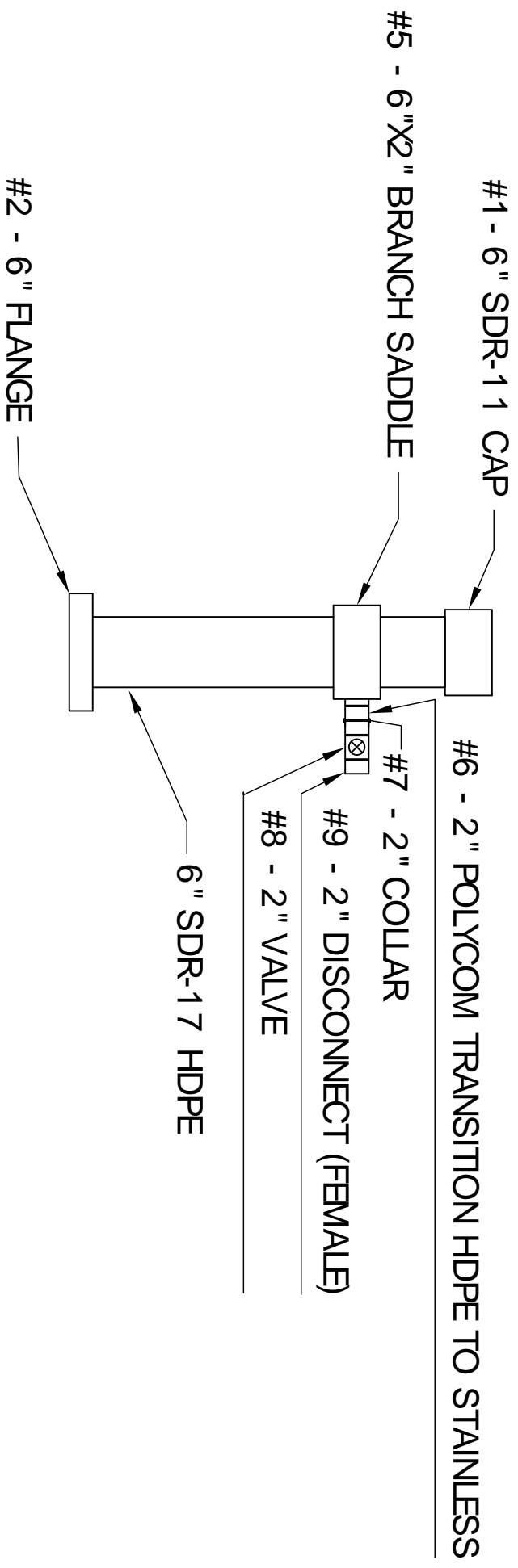
LANDFILL

PUMP

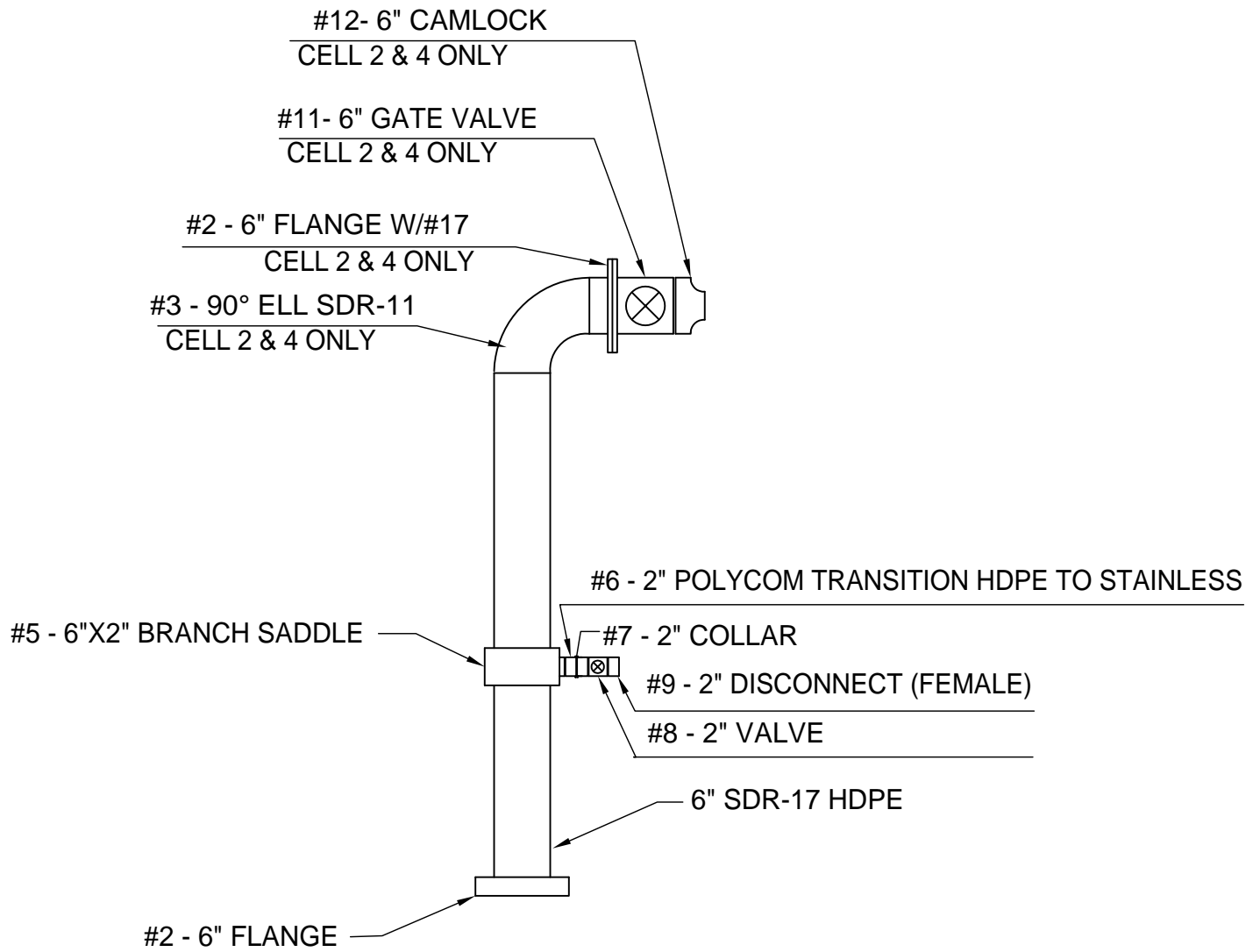
#16 - 2x1¼ REDUCER

#15 - 10" CAP
RISER ONLY





CELLS 1, 3, 5 ONLY



CELLS 2, 4 ONLY