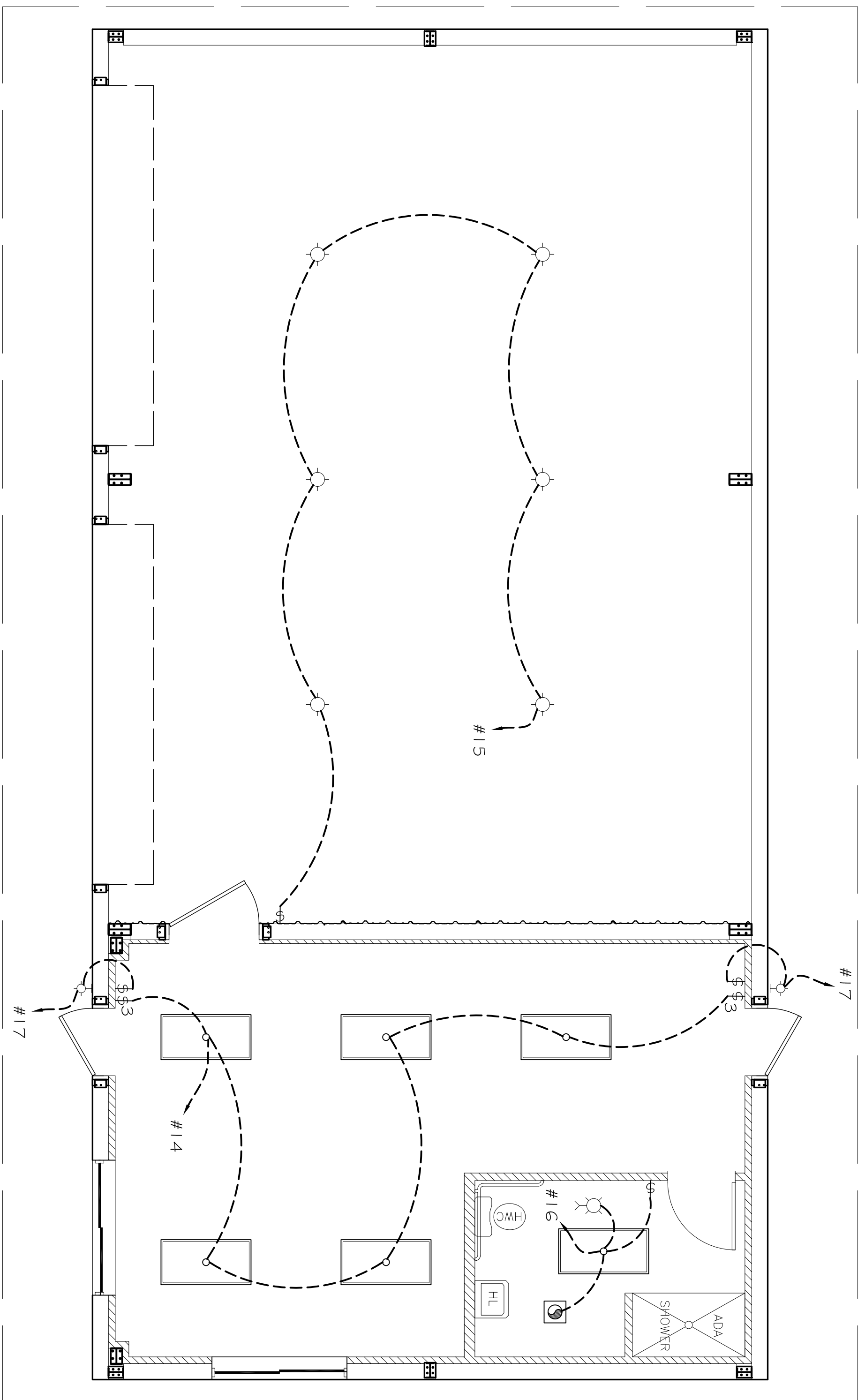


**POWER PLAN**  
SCALE: 1/4" = 1'-0"



**LIGHTING PLAN**  
SCALE: 1/4" = 1'-0"

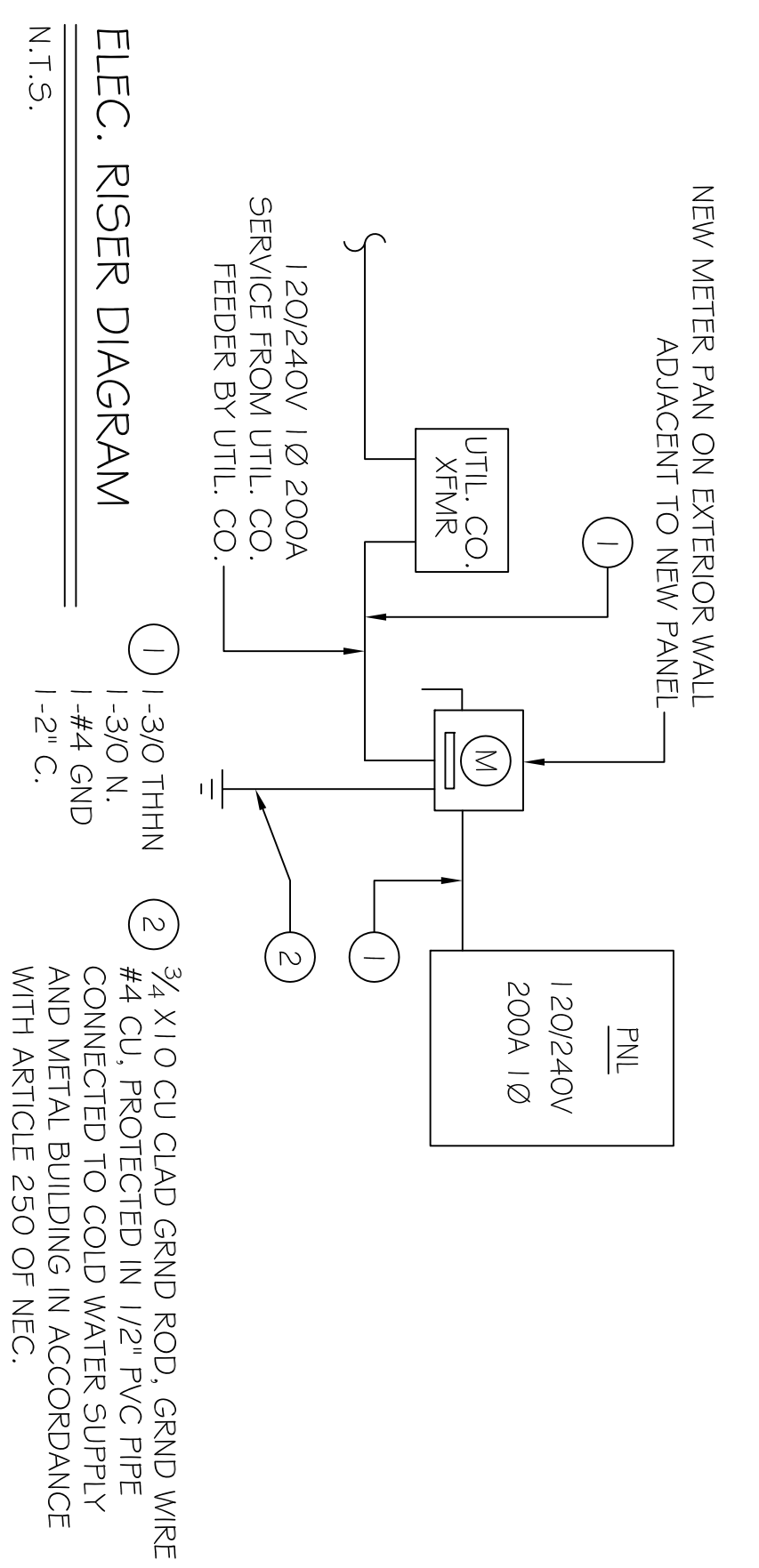
- LIGHTING PLAN SYMBOL LEGEND**
- - 2x4 FLOURESCENT, LAV-IN, PRISMATIC LENSE, 4x 32W T8 LAMPS
  - - EXTERIOR WALL MTD. FIXTURE, 1x 100W INCANDESCENT LAMP
  - - 16" ALUMINUM LOW BAY LIGHT, PULSE START, 1x 250W METAL HALIDE LAMP
  - - PULL CHAIN LIGHT FIXTURE IN ATTIC, 1x 75W INCANDESCENT LAMP
- NOTE: ALL LIGHTING FIXTURES TO BE SELECTED BY OWNER.

TANKLESS WATER HEATER  
EQUAL TO RHEEM RTE 13  
4 GPM CAPACITY  
PROVIDE MIN. CLEARANCES  
AS REQ. BY MANUFACTURER

SYM.	DESCRIPTION	COMMENTS
○	STANDARD 110V DUPLEX RECEPTACLE @ 18" AFF (UNLESS NOTED)	ALL RECEPTACLES SHALL BE GRFC WITH NEMA 3R BASE. COORDINATE FACEPLATE COLOR BY OWNER
○	STANDARD 220V DUPLEX RECEPTACLE @ 18" AFF (UNLESS NOTED)	COORDINATE LOCATION WITH OWNER
○	EXTERIOR 120V DUPLEX RECEPTACLE @ 24" AFF (UNLESS NOTED)	COORDINATE LOCATION WITH OWNER
○	WATERPROOF GASKETED WATERPROOF HOUSING	
○	POWER DISCONNECT	
○	AIR CONDITIONING COND. UNIT SEE MECH SHEETS FOR UNIT DETAILS	
○	DUPLEX CAT 5 JACK WITH FACEPLATE NETWORKING CONNECTION AND T.V. COAXIAL CONNECTION WHERE REQUIRED	COORDINATE LOCATION WITH OWNER

**ELECTRICAL NOTES**

1. ALL WORK SHALL CONFORM TO THE LATEST EDITION OF THE NATIONAL ELECTRICAL CODE (NEC 2008 EDITION), THE GOVERNING ELECTRICAL CODE AND ALL OTHER INSPECTION DEPARTMENT'S HAVING JURISDICTION. OBTAIN CERTIFICATES OR APPROVAL WHERE REQUIRED.
2. ALL MATERIALS FURNISHED SHALL BE NEW AND SHALL BE U.L. LISTED.
3. THE DRAWINGS INDICATE SIZE AND GENERAL LOCATION OF WORK. SCALE DIMENSIONS SHALL NOT BE USED. THE EXACT LOCATION AND LOCATION OF ALL LIGHTING FIXTURES, RECEPTACLES AND TELEPHONE OUTLETS, ETC. SHALL BE DETERMINED BY ACTUAL CONDITIONS IN THE FIELD.
4. PRIOR TO BIDDING, CONTRACTOR SHALL VISIT THE JOB SITE AND FAMILIARIZE THEMSELVES WITH THE EXISTING CONDITIONS.
5. ELECTRICAL CONTRACTOR SHALL COORDINATE HIS WORK WITH OTHER TRADES AND WITH OTHER CONTRACTORS WHOSE WORK MAY AFFECT THIS INSTALLATION.
6. ELECTRICAL CONTRACTOR SHALL COORDINATE INCOMING ELECTRICAL SERVICE WITH UTILITY COMPANY AND INCLUDE IN HIS BID ALL CHARGES AND FEES INCURRED IN MODIFICATIONS.
7. WHERE MORE THAN ONE SWITCH OCCURS IN THE SAME LOCATION, THEY SHALL BE INSTALLED IN A GANG TYPE BOX UNDER ONE COVER PLATE.
8. ELECTRICAL CONTRACTOR SHALL OCCUPY THE TELEPHONE INSTALLATION WITH THE TELEPHONE COMPANY AND THE GENERAL CONTRACTOR.
9. ELECTRICAL CONTRACTOR, BEFORE INSTALLING ANY OF THE WORK, SHALL SEE THAT IT DOES NOT INTERFERE WITH CLEARANCES REQUIRED FOR FINISHED COLUMNS, HUNG CEILINGS, PLASTER, PARTITIONS, WALLS, ETC. AS SHOWN IN THE ARCHITECTURAL DRAWINGS AND DETAILS. IF ANY WORK IS INSTALLED AND IT LATER DEVELOPS THAT SUCH DETAILS OR DESIGN CANNOT BE FOLLOWED, THE CONTRACTOR AT HIS OWN EXPENSE SHALL MAKE SUCH CHANGES IN THE WORK AS DIRECTED BY THE ARCHITECT AS WELL AS TO PERMIT THE INSTALLATION OF THE ARCHITECTURAL WORK AS SHOWN ON THE PLANS AND DETAILS.
10. PERFORM TEST REQUIRED BY THE OWNER OR THE ENGINEER IN CONNECTION WITH THE OPERATION OF THE ELECTRICAL SYSTEM IN THE BUILDING.
11. ALL TESTS SHALL BE MADE IN ACCORDANCE WITH THE IEEE AND THE NATIONAL ELECTRICAL CODE.
12. MINIMUM CONDUCTOR SIZE SHALL BE #12, 600V INSULATION, MINIMUM SIZE CONDUIT SHALL BE 3/4" EMT FOR INTERIOR USE AND 3/4" RIGID ALUMINUM FOR EXTERIOR USE. USE TYPE NMC CABLE COPPER FOR LIGHTS AND RECEPTACLE CIRCUITS. EXTERIOR FITTINGS SHALL BE CAST BOXES AND COVERS. INTERIOR FITTINGS SHALL BE CAST WHERE EXPOSED ON WALLS. STAMPED BOXES MAY BE USED ABOVE CEILINGS IN AIR CONDITIONED SPACES, WHERE LAY IN FIXTURES ARE IN USE, USE 1/4" 2 ALLOWED FOR 6" WIDTH.
13. CONTRACTOR SHALL INSTALL WIRING AND OTHER CIRCUIT COMPONENTS TO MATCH EQUIPMENT ACTUALLY INSTALLED.
14. INSTALL GROUND FAULT RECEPTACLES AT RECEPTACLE LOCATIONS WITHIN 5' OF SINKS OR LAVATORIES, AND AT EXTERIOR LOCATIONS, EXTERIOR RECEPTACLES SHALL ALSO BE WATERPROOF.
15. BONDING AND GROUNDING SHALL BE IN ACCORDANCE WITH NFPA 70-230-63, NFPA 250-23, 250-71 & 250-72.
16. GROUND NEUTRAL IN ACCORDANCE WITH NFPA 70-250-23b.
17. FUSES SHALL BE ITC CLASS KS, 250 VOLT, 200,000 AMP INTERRUPTING CAP.
18. PROVIDE SERVICES OF A FRESHOW DETECTION AND ALARM COMPART TO DESIGN AND INSTALL ALARM SYSTEM TO MEET REQUIREMENTS OF THE STATE FIRE MARSHAL.
19. EXTERIOR LIGHTING SHALL BE SHADED OR INWARDLY DIRECTED IN SUCH A MANNER SO THAT NO DIRECT LIGHTING OR GLARE IS CAST BEYOND THE PROPERTY LINE.
20. ALL ELECTRICAL, MECHANICAL AND PLUMBING PENETRATIONS SHALL BE FIRE CALSIED (PENETRATIONS THROUGH RATED CONSTRUCTION SHALL BE SEALED WITH A MATERIAL CAPABLE OF PREVENTING THE PASSAGE OF FLAMES AND HOT GASES WHEN TESTED IN ACCORDANCE WITH ASTM-E814.)



**ELEC. RISER DIAGRAM**  
N.T.S.

CCT NO.	THIN WIRE SIZE	LOCATION	BREAKER	AMP	FOUL	LOAD (VA)	LOAD (W)	FOUL	AMP	LOAD DESCRIPTION	THIN WIRE SIZE	CCT NO.
1				2300		4200		2	40	PHL 2 TON 42W ELEC. HEATER	#6	2
#10		A/C COMPRESSOR UNIT		2200		4200		2	40	PHL 2 TON 42W ELEC. HEATER	#6	4
3				60		6400		2	20	220V OUTLET IN OFFICE SPACE COORDINATE LOCATION WITH OWNER	#12	5
#6		4 GPM TANKLESS ELECTRIC WATER HEATER		60		6400		2	20	COORDINATE LOCATION WITH OWNER	#12	6
7				1500		1500		1	20	RECEPTACLES	#12	8
#12		220V OUTLET IN OFFICE SPACE COORDINATE LOCATION WITH OWNER		20		1500		1	20	RECEPTACLES	#12	10
9				1500		1600		1	20	RECEPTACLES	#12	12
11				1500		1600		1	20	RECEPTACLES	#12	14
#12		RECEPTACLES		20		1500		1	20	OFFICE LIGHTING	#12	16
13				20		500		1	20	RESTROOM LIGHTING	#12	18
#12		SHOP LOW BAY LIGHTING		20		1500		1	20	SHOP LOW BAY LIGHTING	#12	19
17				20		1000		1	20	SPRINKLER SYSTEM	#12	20
#12		EXTERIOR LIGHTING		20		1000		1	20	SPRINKLER SYSTEM	#12	22
19				20		1600		1	20	SPRINKLER SYSTEM	#12	24
#12		BLANK		-		-		-	-	BLANK	-	-
21				-		-		-	-	BLANK	-	-
23				-		-		-	-	BLANK	-	-
						TOTAL CONNECTED LOAD (VA) = 62620						
						AG = 201.00						
						GROUND FULC GROUND WIRE (Ø)						

#	DESCRIPTION	DATE

**U.S. FISH & WILDLIFE SERVICE**  
**NEW EQUIPMENT STORAGE BLDG.**  
UPPER OUCHITA NATIONAL WILDLIFE REFUGE  
BASTROP, LA

JOB No: 2151      DATE: 10/02/12

DRAWN BY: BSN      CHECKED BY: BSN

The above drawings and specifications, designs and arrangements represent the work of Dammon Engineering, Inc. and shall remain the property of Dammon Engineering, Inc. and shall not be used in connection with any work or project other than that for which they were prepared. Dammon Engineering, Inc. shall not be held responsible for any errors or omissions in these drawings and specifications. All drawings and specifications shall constitute a contract and shall be subject to the terms and conditions of the contract. No part of these drawings and specifications shall be reproduced or transmitted in any form or by any means, electronic, mechanical, photocopying, recording, or by any information storage and retrieval system, without the prior written permission of Dammon Engineering, Inc.

CHIEF ENGINEER: EMMETT DAMMON, P.E.  
CHIEF ARCHITECT: ROBERT WILTSE  
554 OLD SPANISH TRAIL  
SUDELL, LA 70458

dammonengineering.com  
dammoneng@bellsouth.net  
PHONE: 985-649-5832  
FAX: 985-641-5950