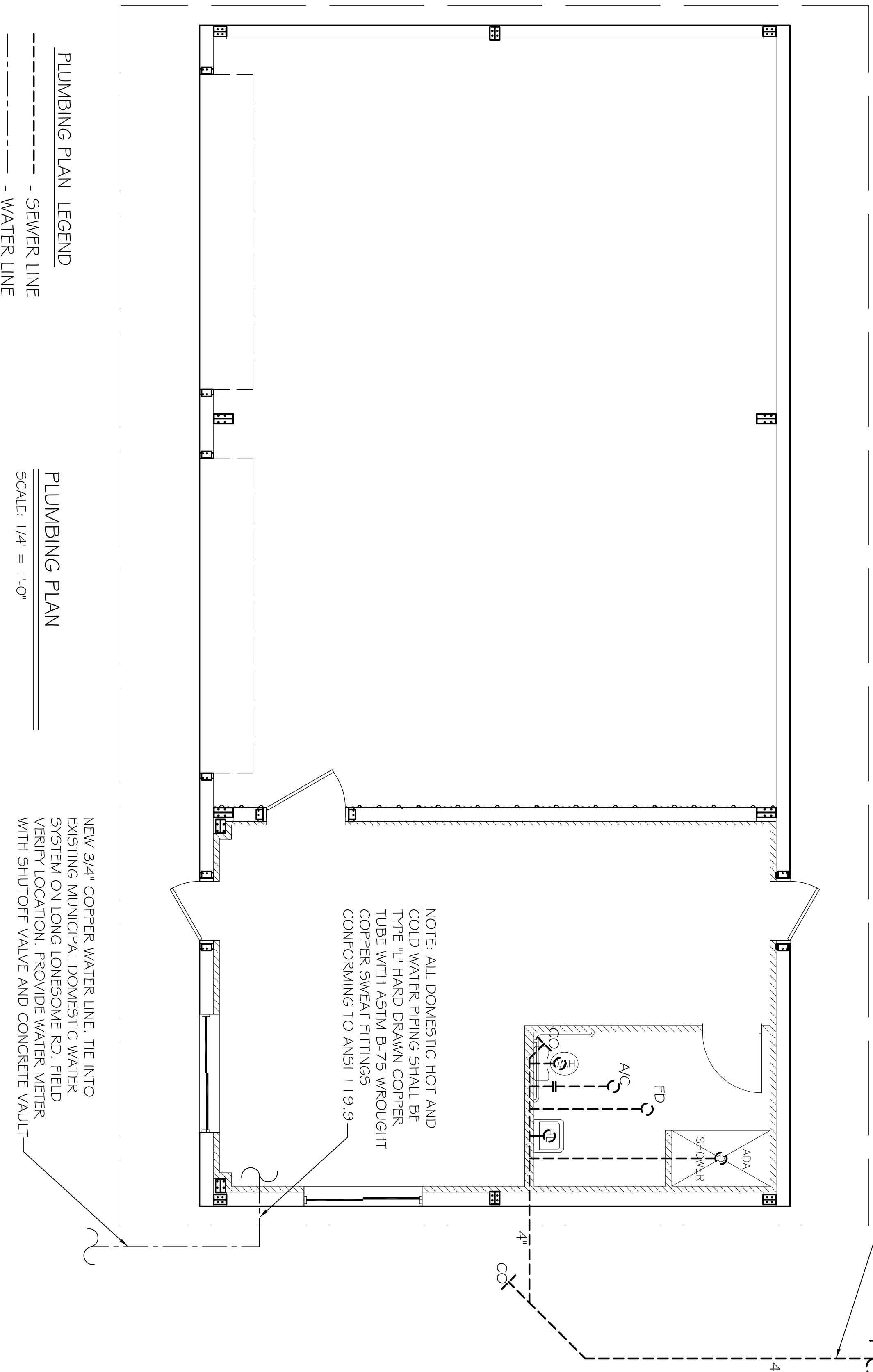


PROVIDE EFFLUENT DISCHARGE SYSTEM IN ACCORDANCE WITH MANUFACTURERS' INSTRUCTIONS AND LOCAL REQUIREMENTS

FIELD LOCATE NEW 500 GPD CHLORINATED SEWAGE TREATMENT PLANT INSTALL IN STRICT ACCORDANCE WITH MANUFACTURERS' INSTRUCTIONS

NOTE: ALL WASTE PIPING SHALL BE TYPE 1, SCH. 40, ASTM 1785-B PVC PIPE WITH FITTINGS CONFORMING TO ANSI 119.9



PLUMBING PLAN LEGEND

----- SEWER LINE
 - - - - - WATER LINE

PLUMBING PLAN

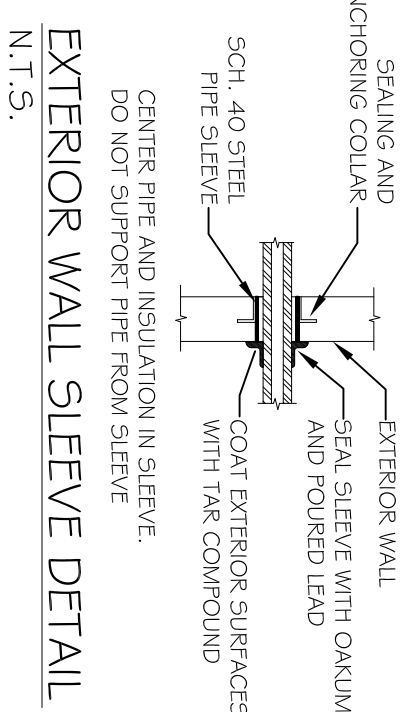
SCALE: 1/4" = 1'-0"

PLUMBING NOTES

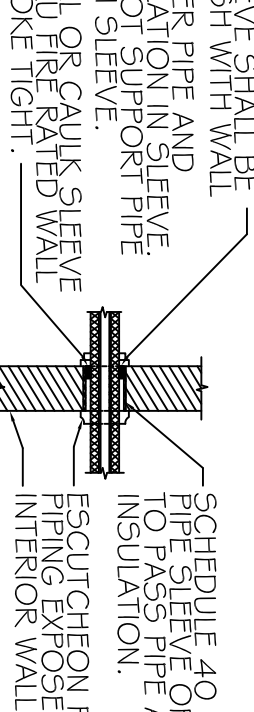
1. PROVIDE ALL LABOR, MATERIAL AND EQUIPMENT FOR A COMPLETE OPERATING SYSTEM. THE SYSTEM SHALL INCLUDE HOT AND COLD WATER PIPING, SEWER AND VENT PIPING, INSULATION, WATER HEATER, HANGERS, VALVES, SUPPORTS WITHOUT ANY RESTRICTIONS TO COLUMN, CUT AND PATCH AS REQUIRED TO INSTALL PIPES.
2. ALL WORK AND MATERIAL SHALL CONFORM STRICTLY TO THE LATEST LOCAL, CITY, PARISH, STATE AND NATIONAL GOVERNING CODES.
3. CONTRACTOR IS TO FIELD VERIFY ALL EXISTING UTILITY LOCATIONS, ELEVATIONS AND SIZES PRIOR TO COMMENCING ANY WORK.
4. CONTRACTOR SHALL PAY NECESSARY FEES FOR THE UTILITIES CONNECTIONS.
5. SEWERAGE LINES 3-INCH AND SMALLER SHALL BE SLOPED 1/4" PER FOOT AND LINE 4-INCH AND LARGER SHALL BE 1/8" PER FOOT.
6. TEST ALL PIPING AT REQUIRED PRESSURE.
7. ALL PLUMBING SHALL BE CLOSELY COORDINATED WITH STRUCTURAL SYSTEM, MECHANICAL SYSTEM AND ELECTRICAL TO INSURE NO TRADES WILL CONFLICT WITH EACH OTHER.
8. DO NOT SCALE DRAWINGS. SEE ARCHITECTURAL DRAWINGS FOR EXACT LOCATIONS OF DOORS, WINDOWS, WALLS, FIXTURES, ETC.
9. ALL WATER MAINS AND PIPING NOT SHOWN FOR CLARITY; ALL LOCATIONS FIELD VERIFIED.
10. ALL ELECTRICAL, MECHANICAL AND PLUMBING PENETRATING FIRE PARTITIONS SHALL BE FIRE CAULKED. (PENETRATIONS THROUGH RATED CONSTRUCTION SHALL BE SEALED WITH A MATERIAL CAPABLE OF PREVENTING THE PASSAGE OF FLAMES AND HOT GASES WHEN TESTED IN ACCORDANCE WITH ASTM E914.)
12. ALL PLUMBING LINES SHOWN ARE DIAGRAMMATIC.

NOTE: ALL DOMESTIC HOT AND COLD WATER PIPING SHALL BE TYPE 1/2" HARD DRAWN COPPER TUBE WITH ASTM B-75 WROUGHT COPPER SWEAT FITTINGS CONFORMING TO ANSI 119.9

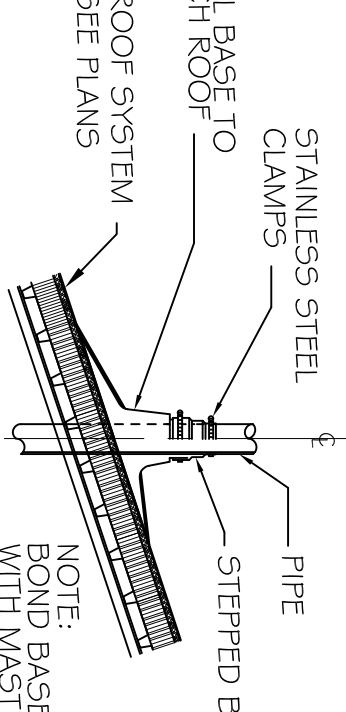
NEW 3/4" COPPER WATER LINE, TIE INTO EXISTING MUNICIPAL DOMESTIC WATER SYSTEM ON LONG LONESOME RD. FIELD VERIFY LOCATION, PROVIDE WATER METER WITH SHUTOFF VALVE AND CONCRETE VAULT



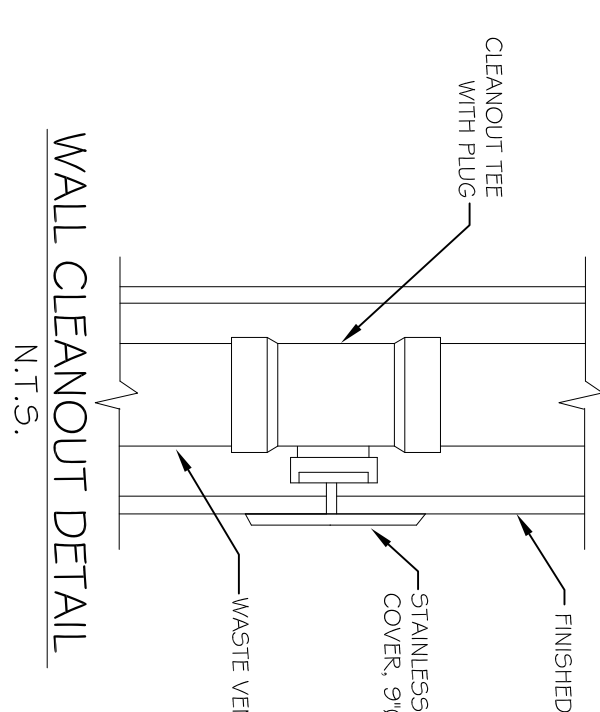
EXTERIOR WALL SLEEVE DETAIL
N.T.S.



TYPICAL INTERIOR WALL SLEEVE DETAIL
N.T.S.



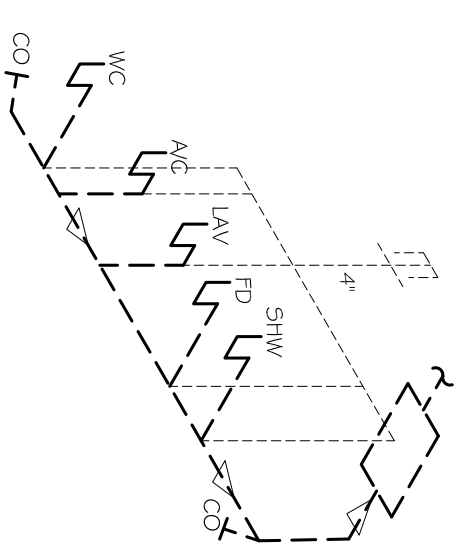
VENT THRU ROOF DETAIL
N.T.S.



WALL CLEANOUT DETAIL
N.T.S.

PLUMBING FIXTURE SCHEDULE					
MARK	DESCRIPTION	TYPE	ROUGH-IN SIZES		NOTES
			WASTE VENT	CW FHW	
WC	H.C. WATER CLOSET	TANK	4"	4"	1/2" - 2, 3, 5
LAV	H.C. LAVATORY	WALL HUNG	2"	1/2"	1, 2, 3, 5
FD	FLOOR DRAIN	-	2"	-	4, 5
WH	WATER HEATER DRAIN	-	2"	1/2"	5
AHU	AHU DRAIN	-	1"	-	5
SHW	SHOWER	-	2"	1/2"	1/2" 5

- FIXTURE NOTES:
1. INSULATE PIPING FOR HANDICAP FIXTURES.
 2. PROVIDE CHAIR CARRIER FOR WALL HUNG FIXTURES.
 3. H.C. - HANDICAP FIXTURE
 4. INSTALL TRAP PRIMER ON ALL FLOOR DRAINS.
 5. FIXTURES SELECTED BY OWNER.



PLUMBING RISER DIAGRAM
N.T.S.

NEW 500 GPD CHLORINATED TREATMENT PLANT

DAMMON ENGINEERING, INC.
 Architects & Engineers

CHIEF ENGINEER: EMMETT DAMMON, P.E.
 CHIEF ARCHITECT: ROBERT WILTSE
 554 OLD SPANISH TRAIL
 SLIDELL, LA 70456

dammonengineering.com
 dammoneng@bellsouth.net
 PHONE: 985-649-5832
 FAX: 985-641-5990

U.S. FISH & WILDLIFE SERVICE
NEW EQUIPMENT STORAGE BLDG.
 UPPER OUCHITA NATIONAL WILDLIFE REFUGE
 BASTROP, LA

JOB No: 2151 DATE: 10/02/12
 DRAWN BY: BSN CHECKED BY: BSN

REVISIONS		
#	DESCRIPTION	DATE

PLUMBING PLAN

SHEET No: 03 OF 03

P-1