

Delta Environmental
Products™

Pentair Water

DO NOT BURY UNIT MORE THAN
6" BELOW GROUND LEVEL OVER
COMPLETE LENGTH OF UNIT

INSTALLATION & OPERATIONAL MANUAL

Eco-Tech 500 - II
The Innovative Sewerage
Treatment System

P.O. Box 969 Denham Springs, Louisiana 70727 (225) 665-1666 (800) 219-9183

PROCESS DESCRIPTION

The Eco-Tech 500-II wastewater system was designed specifically for treatment of household sewage at an individual camp.

The unit relies on anaerobic (without air) digestion as its primary means of treatment.

The system is constructed of a one-piece polyethylene tank, consisting of four chambers.

The first and largest chamber is designed for primary digestion through continuous bacterial decomposition.

Once this chamber has reached its capacity, the waste then flows into the second and third chambers respectively. The ongoing bacterial action and resulting reduction of pollutants occurs as the wastewater progresses through the tank.

Discharge from the third chamber passes through a tablet type chlorinator and then into the chlorine contact tank for the purpose of destroying disease bearing microorganisms.

OPERATION INSTRUCTIONS

The Eco-Tech 500-II has been designed and built to provide long term reliable and efficient service.

The unit is designed to handle sewage and nothing else should be allowed to enter it. To keep maintenance to a minimum and insure high effluent quality, the following items should not be permitted to enter the system:

- Strong disinfectants or bleaches, other than small amounts normally utilized in day to day cleaning and laundry;
- Any type of oils, greases or other chemical wastes;
- Disposable baby diapers, sanitary napkins or other similar devices;
- Material from a garbage disposal.

The chlorinator, located near the outlet end of the tank, is equipped with an automatic shut off device to prevent discharge from the unit when the chlorinator supply is exhausted. This can result in wastewater backing up in the sewerage system to the extent that water damage may occur to the inside of the camp and/or its contents. **It is therefore mandatory that a periodic check be made of the chlorine level in the chlorinator tube.**

NOTE: The chlorinator shut off device is provided as required by state law to insure a safe, high quality discharge.

INSTALLATION INSTRUCTIONS

1. Prepare an excavation, having a length and width approximately one foot larger than the tank. The entire length of the tank must not be buried more than 6" below grade level. This will allow approximately 3 inches of the chlorine tube to stick above normal ground level. The entire length of the tank must be buried at least ½ of the height of the tank. Place approximately 6" layer of sand in the excavated hole to ensure a smooth, level and compact base.
2. Place the plant in the excavation so the inlet and outlet line up with the sewer piping. The inlet line should slope down toward the plant and the outlet line should slope down away from the plant. The plant should be level within 1-1/2 inches, end to end.
3. Position inlet and outlet lines and make connections as necessary, depending upon the type of piping utilized. Fill chlorinator with tablets and the tank with water to point of flowing discharge before backfilling. Backfill around plant, tanking care not to damage the surface coating, or dislodge the piping.
4. Plant is ready to receive incoming sewage.

NOTE: Plants must be partially buried up to the mid-line of the tank to full burial.

LIMITED WARRANTY

Delta Environmental Products, Inc. (hereinafter referred to as Manufacturer), warrants each treatment plant to be free from defects in material and workmanship for a period of one (1) year from the date of purchase, treating domestic wastewater, and when properly installed according to Manufacturers recommended instructions. This warranty applies only to the treatment plant and does not include any of the camp contents, plumbing or drainage system.

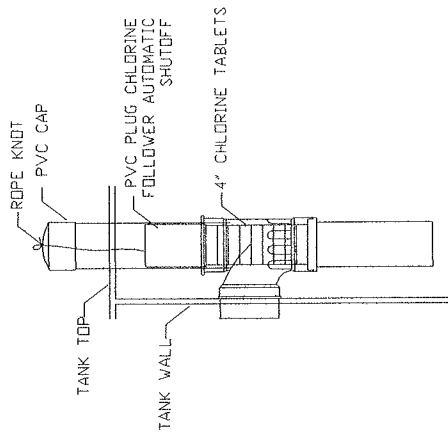
WARNING

Your State or Local Health department may require other pieces of equipment to function separately or in conjunction with equipment manufactured by Delta Environmental Products, Inc.

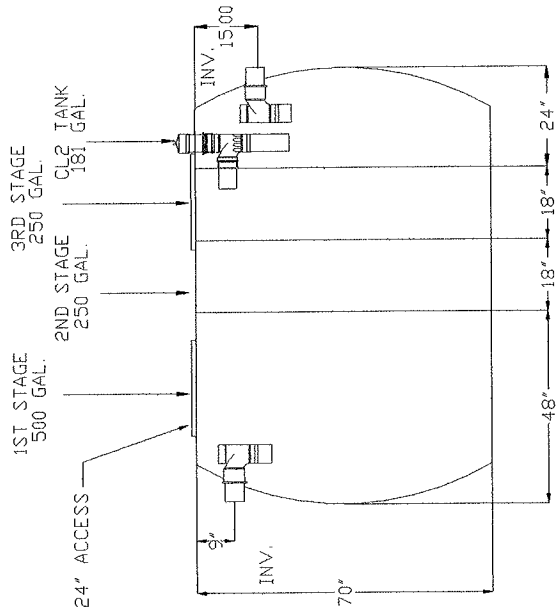
Delta Environmental Products, Inc. is not responsible for the mechanical or electrical safety of equipment it does not manufacture or supply with its sewage treatment system.

Particular care should be used in evaluating the electrical or mechanical safety of equipment manufactured by others. This may include but not be limited to electrical control boxes or pumps.

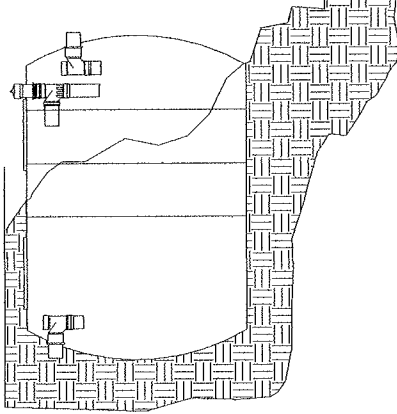
DO NOT BURY UNIT MORE THAN
6" BELOW GROUND LEVEL OVER
COMPLETE LENGTH OF UNIT



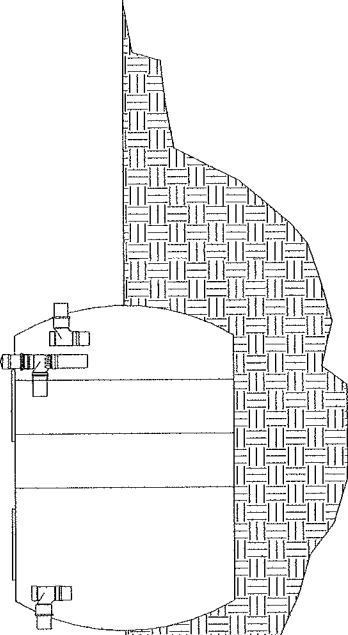
CHLORINATOR
DETAIL



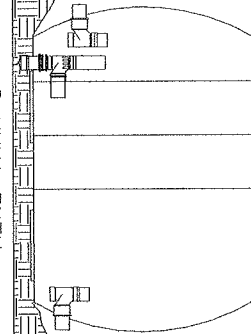
SLOPE BURIAL
NO MORE THAN 6"



PARTIAL BURIAL
TANK MUST BE BURIED
AT LEAST 1/2 OF HEIGHT



FULL BURIAL
BURY NO
MORE THAN 6"



DELTA ENVIRONMENTAL PRODUCTS, INC.
P. O. BOX 969 DENHAM SPRINGS, LA 70727

ECO TECH II CAMP UNIT 500 GALLON

DWN BY:
BLANDRY

DATE:
04/09/03

SCALE:
N.T.S.

DWG. NO.:
DEP006