

ST. TAMMANY PARISH SHERIFF'S OFFICE
BROWNSWITCH ROAD
SLIDELL, LOUISIANA

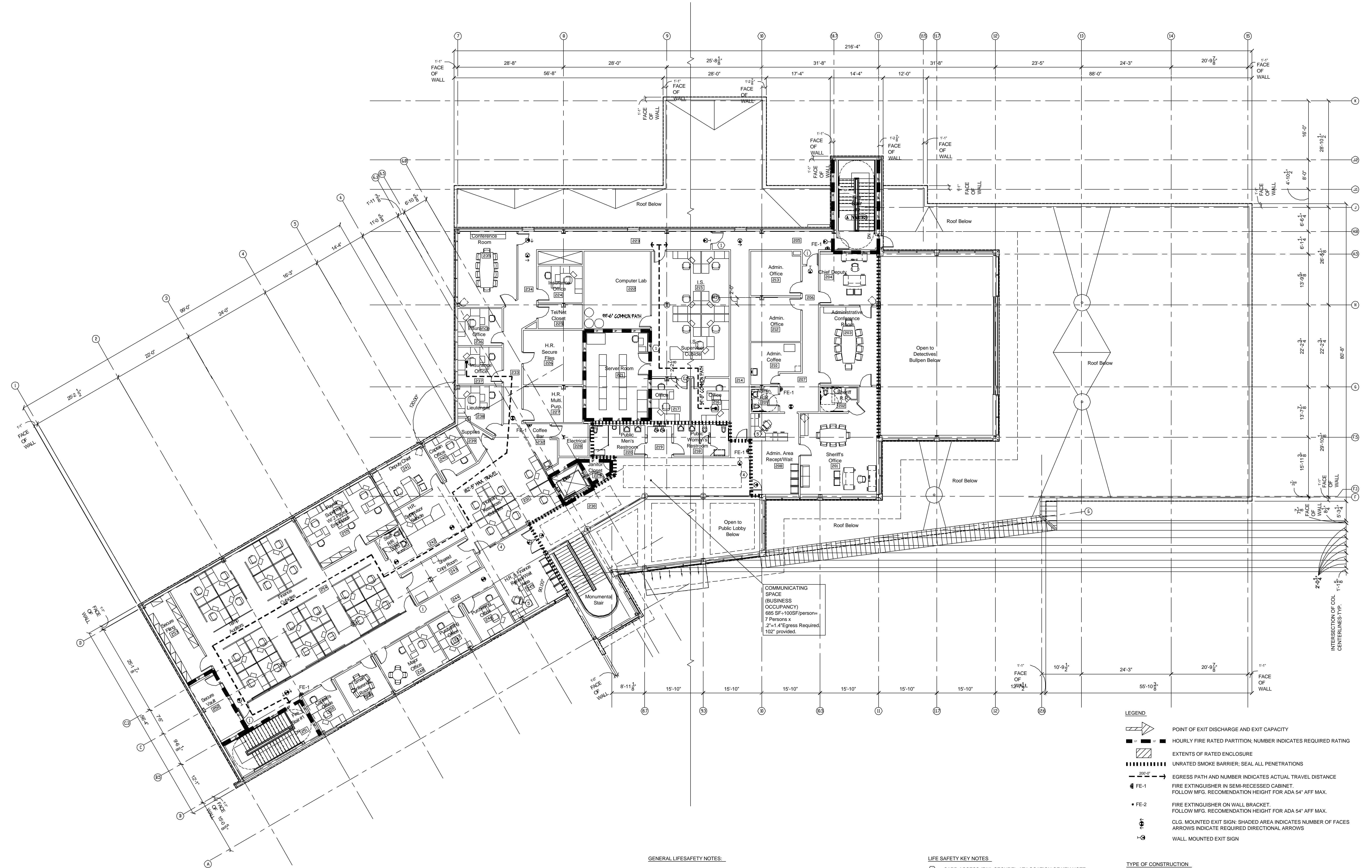
CONSTRUCTION DOCUMENTS

2ND FLOOR LIFE SAFETY PLAN

Sheet Number:

A1.02

Copyright 2007



- LEGEND**
- POINT OF EXIT DISCHARGE AND EXIT CAPACITY
 - HOURLY FIRE RATED PARTITION; NUMBER INDICATES REQUIRED RATING
 - EXTENTS OF RATED ENCLOSURE
 - UNRATED SMOKE BARRIER; SEAL ALL PENETRATIONS
 - EGRESS PATH AND NUMBER INDICATES ACTUAL TRAVEL DISTANCE
 - FIRE EXTINGUISHER IN SEMI-RECESSED CABINET, FOLLOW MFG. RECOMMENDATION HEIGHT FOR ADA 54" AFF MAX.
 - FIRE EXTINGUISHER ON WALL BRACKET, FOLLOW MFG. RECOMMENDATION HEIGHT FOR ADA 54" AFF MAX.
 - G.L. MOUNTED EXIT SIGN. SHADED AREA INDICATES NUMBER OF FACES
 - WALL MOUNTED EXIT SIGN

TYPE OF CONSTRUCTION
IBC TYPE IIB, (NON-COMBUSTIBLE, UNPROTECTED)
NFPA TYPE II, (0.00)
SPRINKLED - SUPERVISED
ORDINARY HAZARD

OCCUPANCY & AREAS
MULTIPLE OCCUPANCY - SEPARATED

| | | |
|---|---------|---|
| 1) BUSINESS W/ INCIDENTAL STORAGE & INCIDENTAL SMALL ASSEMBLY | FLOOR 2 | 14,975 SF/100SF PER OCCUPANT = 150 O.L. |
| | FLOOR 1 | 25,707 SF/100SF PER OCCUPANT = 258 O.L. |
| 2) ASSEMBLY A-3 | FLOOR 1 | 810 SF/75SF PER OCCUPANT = 116 O.L. |
| | | TOTAL 524 O.L. |

APPLICABLE CODES & ZONING

| | |
|------|---|
| 2003 | NFPA 101 - NATIONAL FIRE PROTECTION ASSOCIATION |
| 1994 | ADAAG - AMERICANS DISABILITIES ACCESSIBILITY GUIDELINES |
| 2006 | ASCE - AMERICAN SOCIETY OF CIVIL ENGINEERS |
| 2006 | IBC - INTERNATIONAL BUILDING CODE |
| 2005 | NEC - NATIONAL ELECTRIC CODE |
| 2003 | LOUISIANA STATE PLUMBING CODE |
| 2006 | IBC - INTERNATIONAL MECHANICAL CODE |
| 2006 | IBC - INTERNATIONAL GAS CODE |
| 2006 | D.O.E. ENERGY BUILDING CODE |
| 2006 | ST. TAMMANY PARISH ZONING ORDINANCE C-2 |

- GENERAL LIFESAFETY NOTES:**
- REFER TO SHEET A3.09 FOR PARTITION CONSTRUCTION AND UL DESCRIPTIONS.
 - ALL CONSTRUCTION SHALL COMPLY WITH 2003 NFPA 101 AND OTHER APPLICABLE CODES.
 - SEE ELECTRICAL DRAWINGS FOR ADDITIONAL INFORMATION ON SPECIAL SYSTEMS AND EXIT LIGHTING.
 - SEE FIRE PROTECTION DRAWINGS FOR SPRINKLER SYSTEMS LAYOUT.
 - ALL FIRE RATED PARTITIONS AND SMOKE PARTITIONS MUST BE PERMANENTLY IDENTIFIED BY STENCILING ABOVE CEILING OR CONCEALED SPACES. IE "FIRE AND SMOKE BARRIER PROTECT ALL OPENINGS." TEXT SIZE AS PER CODE REQUIREMENTS.
 - REFER TO MECHANICAL PLANS FOR FIRE DAMPERS AND EXHAUST FAN LOCATIONS. NOTIFY ARCHITECT OF ANY DISCREPANCIES WITH LIFESAFETY PLANS PRIOR TO SUBMISSION OF BID.
 - SEE ARCHITECTURAL SITE PLAN FOR ADDITIONAL ADA LAYOUT.
 - REFER TO SPECIAL SYSTEMS DRAWINGS, DOOR AND FRAME SCHEDULE AND HARDWARE SPECIFICATION FOR ADDITIONAL INFORMATION ON ACCESS CONTROL AND SPECIAL SYSTEM REQUIREMENTS.
 - REFER TO SPECIFICATIONS FOR FIRE EXTINGUISHER TYPE AND RATINGS.

- LIFE SAFETY KEY NOTES:**
- CARD ACCESS (FAIL SECURE), AT LOCATION OF KEY NOTE DESIGNATION (OR ENTRY SIDE). FREE ACCESS FROM EGRESS SIDE ALWAYS.
 - KEY PAD / CARD ACCESS (FAIL SECURE), AT LOCATION OF KEY NOTE DESIGNATION (OR ENTRY SIDE). FREE ACCESS FROM EGRESS SIDE ALWAYS.
 - DELAYED EGRESS - PROVIDE OPENING WITH WITH ALL REQUIREMENTS REQUIRED PER NFPA 7.2.1.6.1. INTEGRATE WITH FIRE ALARM SYSTEM, (FAIL SAFE).
 - CARD ACCESS (FAIL SECURE) AT LOCATION OF KEY NOTE DESIGNATION (OR ENTRY SIDE). PROVIDE INTERCOM AT EGRESS SIDE OF DOOR ALWAYS. PROVIDE INTERCOM AT CARD ACCESS SIDE OF DOOR 001. PROVIDE REMOTE RELEASE AND/OR INTERCOM AT LOCATION INDICATED BY (C).
 - LOCATION OF REMOTE RELEASE AND/OR INTERCOM FOR KEYNOTE DESIGNATION (C).
 - CARD READER ON EACH SIDE OF DOOR. CARD ACCESS (FAIL SAFE), ON ENTRY SIDE OF ROOM. FREE ACCESS FROM EGRESS SIDE LEAVING ROOM IN THE EVENT OF ALARM. INTEGRATE WITH FIRE ALARM SYSTEM.

PROJECT DATA

| | |
|-------------------|------------|
| FIRST FLOOR AREA | 26,518 SF |
| SECOND FLOOR AREA | 14,975 SF |
| TOTAL AREA | 41,493 SF |
| TOTAL PARKING | 197 SPACES |
| ADA PARKING | 4 |
| VAN ACCESSIBLE | 2 |

1 LIFE SAFETY PLAN - 2ND FLOOR
A1.02 3/32"=1'-0"

