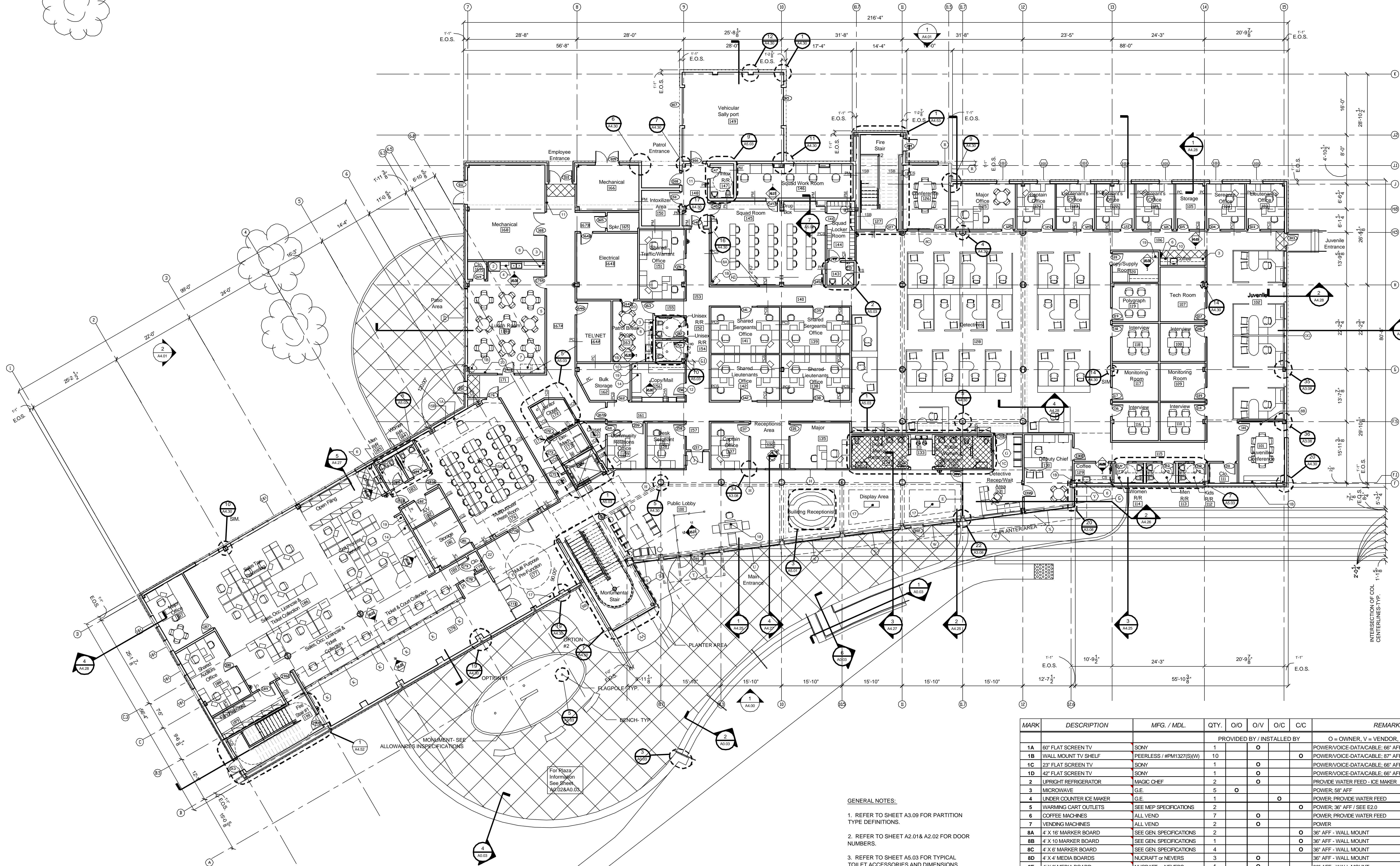
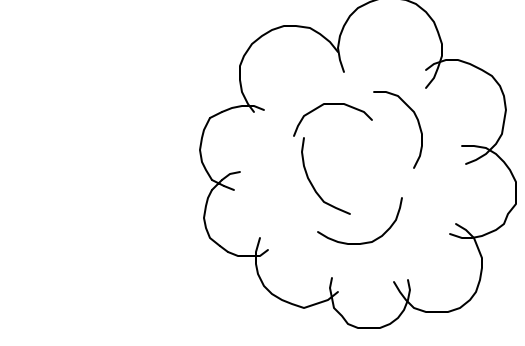


ST. TAMMANY PARISH SHERIFF'S OFFICE
BROWNSWITCH ROAD
SLIDELL, LOUISIANA

CONSTRUCTION DOCUMENTS

1ST FLOOR
REFERENCE
PLAN
Sheet Number:

A2.01



- GENERAL NOTES:**
- REFER TO SHEET A3.09 FOR PARTITION TYPE DEFINITIONS.
 - REFER TO SHEET A2.01 & A2.02 FOR DOOR NUMBERS.
 - REFER TO SHEET A3.03 FOR TYPICAL TOILET ACCESSORIES AND DIMENSIONS.
 - ALL DIMENSIONS ARE TO FINISH FACE OF BASE PARTITION UNLESS NOTED OTHERWISE.
 - G.C. TO COORDINATE & PROVIDE 20 GA. GALV. SHEET METAL BLOCKING OR FIRE / TERMITE TREATED WOOD BLOCKING AS REQUIRED AT ALL ACCESSORIES, CASEWORK, & OWNER PROVIDED EQUIPMENT, TO BE INSTALLED BY CONTRACTOR.
 - REFER TO LIFE SAFETY PLAN A1.01 & A1.02 FOR HOURLY RATED WALL AND SMOKE PARTITION LOCATIONS. NOTIFY ARCHITECT OF ANY DISCREPANCIES WITHIN ENLARGED PLAN PARTITION CALL OUTS FOR CLARIFICATION.
 - SEE SHEET A3.01A & A3.02 FOR FINISH FLOOR SCHEDULES.

MARK	DESCRIPTION	MFG. / MDL.	QTY.	O/O	O/V	O/C	C/C	REMARKS
PROVIDED BY / INSTALLED BY								
O = OWNER, V = VENDOR, C = CONTRACTOR								
1A	60" FLAT SCREEN TV	SONY	1		O			POWER/VOICE-DATA/CABLE; 66" AFF - Wall Mount
1B	WALL MOUNT TV SHELF	PEERLESS / #PM132T(S)/W	10			O		POWER/VOICE-DATA/CABLE; 67" AFF - Wall Mount
1C	23" FLAT SCREEN TV	SONY	1		O			POWER/VOICE-DATA/CABLE; 66" AFF - Wall Mount
1D	42" FLAT SCREEN TV	SONY	1		O			POWER/VOICE-DATA/CABLE; 66" AFF - Wall Mount
2	UPRIGHT REFRIGERATOR	MAGIC CHEF	2					PROVIDE WATER FEED - ICE MAKER
3	MICROWAVE	G.E.	5	O				POWER; 36" AFF
4	UNDER COUNTER ICE MAKER	G.E.	1			O		POWER; PROVIDE WATER FEED
5	WARMING CART OUTLETS	SEE MEP SPECIFICATIONS	2				O	POWER; 36" AFF / SEE E2.0
6	COFFEE MACHINES	ALL VEND	7		O			POWER; PROVIDE WATER FEED
7	VENDING MACHINES	ALL VEND	2		O			POWER
8A	4" X 16" MARKER BOARD	SEE GEN. SPECIFICATIONS	2				O	36" AFF - WALL MOUNT
8B	4" X 10" MARKER BOARD	SEE GEN. SPECIFICATIONS	1				O	36" AFF - WALL MOUNT
8C	4" X 6" MARKER BOARD	SEE GEN. SPECIFICATIONS	4				O	36" AFF - WALL MOUNT
8D	4" X 4" MEDIA BOARDS	NUCRAFT or NEVERS	3		O			36" AFF - WALL MOUNT
8E	4" X 6" MEDIA BOARD	NUCRAFT or NEVERS	1		O			36" AFF - WALL MOUNT
9	PERSONNEL LOCKERS	REPUBLIC STORAGE	TBD			O		12" WIDE - DBL. TIER WITH CLOSED BASE; COLOR: GRAY
10	UNDER COUNTER REFRIGERATOR	G.E.	5			O		POWER
11	EMPLOYEE TIME CLOCK	KRONOS	2		O			POWER/VOICE-DATA; 48" AFF - Wall Mount / SEE A1.01 FOR LOCATIONS
12	MAILBOXES	SEE GEN. SPECIFICATIONS	TBD				O	SEE A1.01 FOR LOCATION
13	4" X 6" SMART BOARD	POLYVISION	2		O			POWER/VOICE-DATA; 36" AFF - Wall Mount
14	COPY MACHINES	XEROX	6		O			POWER/VOICE-DATA
15A	DROP DN. PROJECTOR PLATFORM	SEE MEP SPECIFICATIONS	1			O		POWER/VOICE-DATA ABOVE CEILING GRID / SEE A6.01A
15B	10' X 10' DROP DN. SCREEN	DRAPER, INC. / ENVOY	1			O		POWER ABOVE CEILING GRID / SEE A6.01A
17	TROPHY DISPLAY CASES	TBD	5	O				POWER - FLOOR OUTLETS
18	METAL DETECTOR / X-RAY	TBD	1		O			POWER/VOICE-DATA - FLOOR OUTLETS
19	PAPER RECYCLE BOXES	ISHRED	5		O			SEE A1.01 AND A2.01 FOR LOCATIONS
20	WATER COOLER DISPENSERS	ABITA SPRINGS WATER	4	O				POWER
21	INFORMATIONAL KIOSK	TBD	1	O				POWER/VOICE-DATA IN COLUMN FACE - COL LN 8.7F.1
22	THROUGHWALL DROP BOX	AUTH FLORENCE OR EQUAL	1		O			Rear Loading, Horizontal Style, Anodized Alum. "Lift off rear cover", 1" Engraved Letters. See www.mailboxes.com

NOTE: GC RESPONSIBLE FOR ALL HARD CONNECTIONS.

1ST FLOOR REFERENCE PLAN
A2.01 3/32"=1'-0"

Copyright 2007