

ST. TAMMANY PARISH SHERIFF'S OFFICE
BROWNSWITCH ROAD
SLIDELL, LOUISIANA

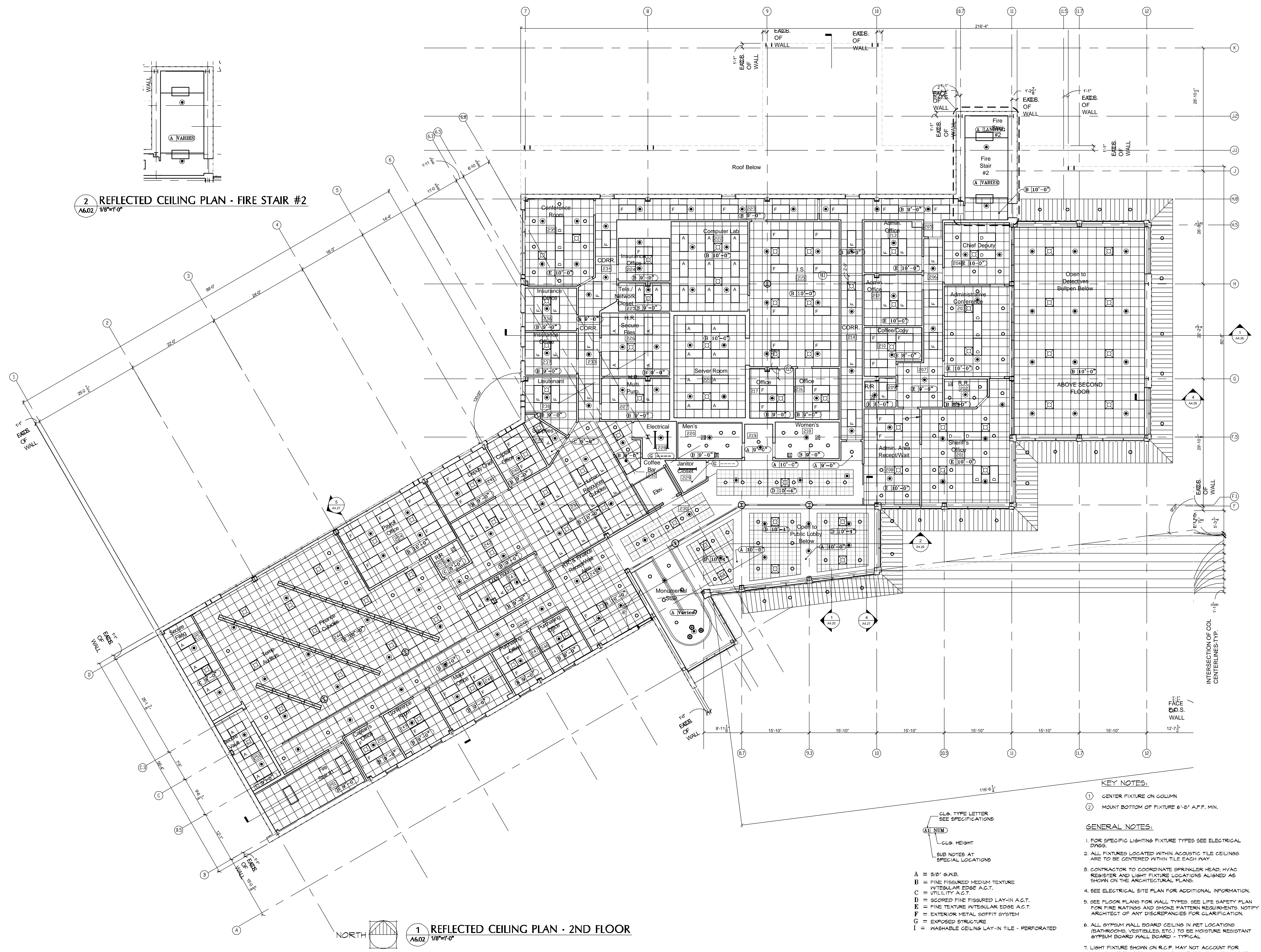
CONSTRUCTION DOCUMENTS

2ND FLOOR REFLECTED CEILING

Sheet Number:

A6.02

Copyright 2007



2 REFLECTED CEILING PLAN - FIRE STAIR #2
A6.02 / 1/8"=1'-0"

1 REFLECTED CEILING PLAN - 2ND FLOOR
A6.02 / 1/8"=1'-0"

KEY NOTES:

- 1) CENTER FIXTURE ON COLUMN
- 2) MOUNT BOTTOM OF FIXTURE 6'-8" A.F.F. MIN.

GENERAL NOTES:

- 1. FOR SPECIFIC LIGHTING FIXTURE TYPES SEE ELECTRICAL DWGS.
- 2. ALL FIXTURES LOCATED WITHIN ACOUSTIC TILE CEILING ARE TO BE CENTERED WITHIN TILE EACH WAY.
- 3. CONTRACTOR TO COORDINATE SPRINKLER HEAD, HVAC REGISTER AND LIGHT FIXTURE LOCATIONS ALIGNED AS SHOWN ON THE ARCHITECTURAL PLANS.
- 4. SEE ELECTRICAL SITE PLAN FOR ADDITIONAL INFORMATION.
- 5. SEE FLOOR PLANS FOR WALL TYPES. SEE LIFE SAFETY PLAN FOR FIRE RATINGS AND SMOKE PATTERN REQUIREMENTS. NOTIFY ARCHITECT OF ANY DISCREPANCIES FOR CLARIFICATION.
- 6. ALL GYPSUM WALL BOARD CEILING IN KET LOCATIONS (BATHROOMS, VESTIBULES, ETC.) TO BE MOISTURE RESISTANT GYPSUM BOARD WALL BOARD - TYPICAL.
- 7. LIGHT FIXTURE SHOWN ON R.C.P. MAY NOT ACCOUNT FOR ALL FIXTURES. SEE LIGHTING PLAN (SHEET E-1.0, E-1.1 & E-1.2) FOR COMPLETE BUILDING LIGHTING LAYOUT.
- 8. SEE REF. PLANS FOR FIXTURE KEY NOTE DESCRIPTIONS.

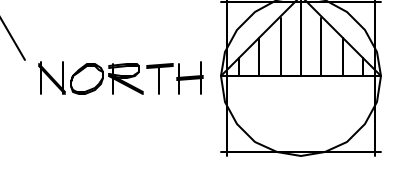
CLS. TYPE LETTER
SEE SPECIFICATIONS

ALL NUM

CLS. HEIGHT

SUB NOTES AT
SPECIAL LOCATIONS

A = 5/8" S.M.B.
B = FINE FIGURED MEDIUM TEXTURE
W/REGULAR EDGE A.C.T.
C = UTILITY A.C.T.
D = SCORED FINE FIGURED LAY-IN A.C.T.
E = FINE TEXTURE W/REGULAR EDGE A.C.T.
F = EXTERIOR METAL SOFFIT SYSTEM
G = EXPOSED STRUCTURE
I = WASHABLE CEILING LAY-IN TILE - PERFORATED



1'-0" FACE
O.S. WALL

INTERSECTION OF COL.
CENTERLINES-TYP.