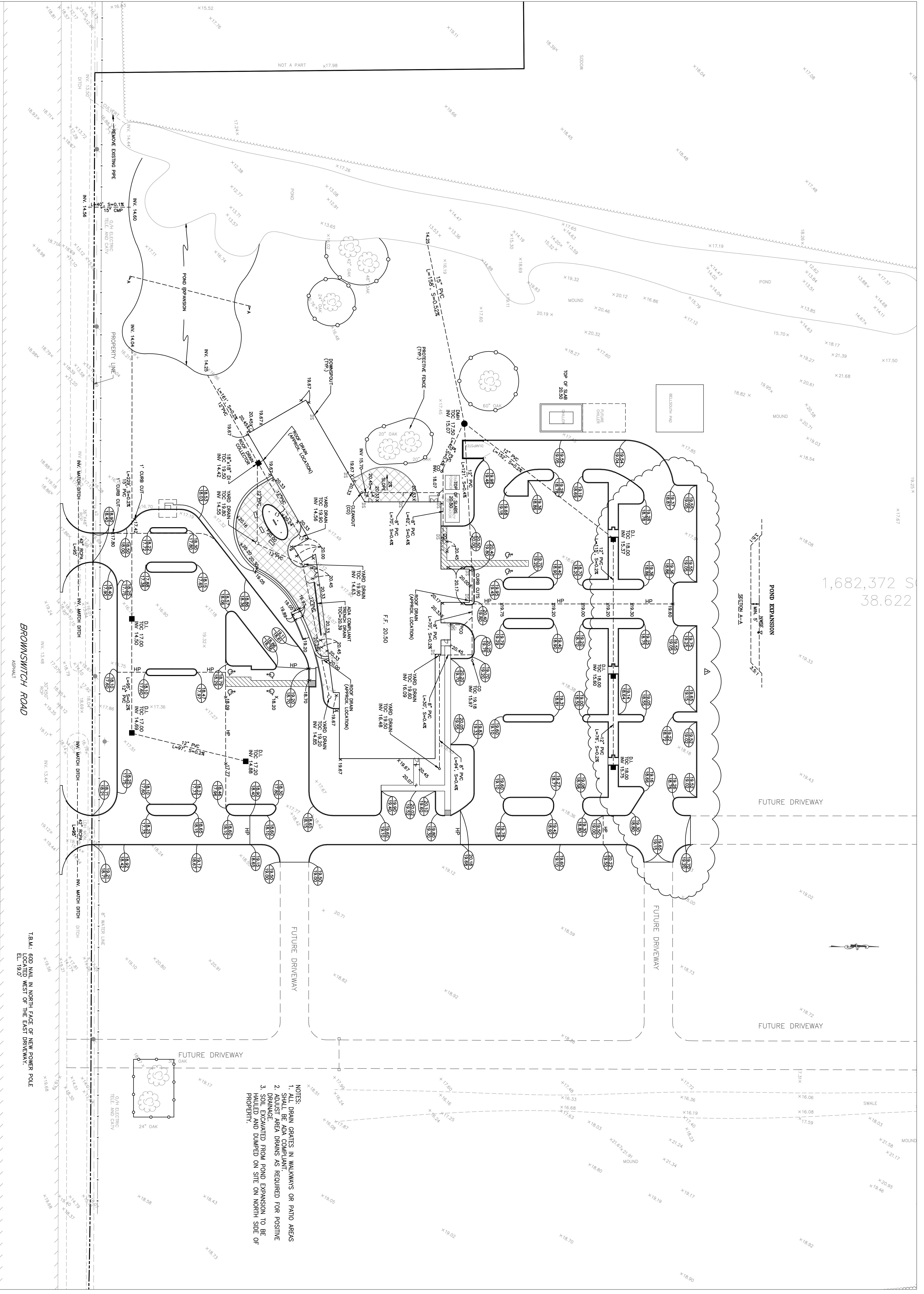


1,682,372 S  
38.622



- NOTES:
1. ALL DRAIN GRATES IN WALKWAYS OR PATIO AREAS SHALL BE ADA COMPLIANT
  2. ADJUST AREA DRAINS AS REQUIRED FOR POSITIVE DRAINAGE AWAYED FROM POND EXPANSION TO BE HAILED AND DUMPED ON SITE ON NORTH SIDE OF PROPERTY.

18A.K. 60D NAIL IN NORTH FACE OF NEW POWER POLE LOCATED WEST OF THE EAST DRIVEWAY.  
EL. 19.0'

BROWNSWITCH ROAD  
ASPHALT

SCALE: 1" = 30'

**RCL**  
CONSULTANTS, LLC  
Professional Services  
Architectural  
Engineering  
Construction  
Management

**RICHARD C. LAMBERT**  
CONSULTANTS, LLC  
801 N. Choudry Blvd.  
Baton Rouge, LA 70802  
Phone: 848-2744  
Fax: 848-2744  
E: Richard.C.Lambert@rcl.com  
R: 848-2744  
www.rcl.com

Project Number: 0899  
Date Issued: 02/06/07  
Drawn By: BAF  
Checked By: VE  
Revisions:  
PRI A 8/30/07

**ST. TAMMANY PARISH SHERIFF'S OFFICE**  
**BROWNSWITCH ROAD**  
**SLIDELL, LOUISIANA**

CONSTRUCTION DOCUMENTS

**GRADING & DRAINAGE PLAN**  
Sheet Number: C2