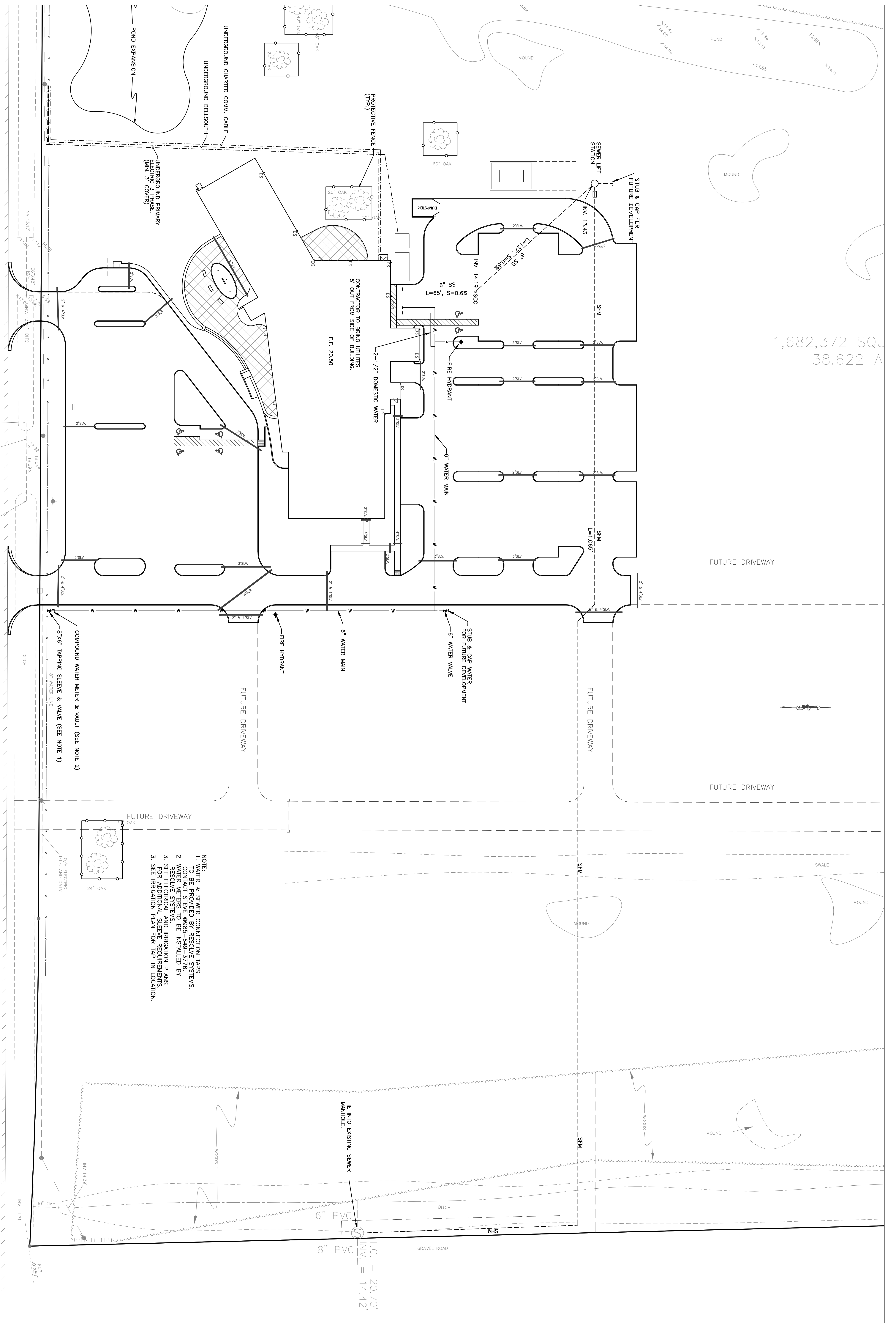


1,682,372 SQU
38.622 A

BROWNSWITCH ROAD
ASPHALT



NOTE:
1. WATER & SEWER CONNECTION TAPS
TO BE INSTALLED BY THE CONTRACTOR.
CONTACT STEVE @985-649-5776 BY
2. WATER METERS TO BE INSTALLED BY
RESOLVE SYSTEMS.
3. SEE ELECTRICAL AND IRRIGATION PLANS
FOR ELECTRICAL AND IRRIGATION DETAILS.
3. SEE IRRIGATION PLAN FOR TAP-IN LOCATION.

COMPOUND WATER METER & VALVE (SEE NOTE 2)
8" X 6" TAPPING SLEEVE & VALVE (SEE NOTE 1)
6" WATER MAIN
6" WATER MAIN

6" PVC
8" PVC
T.C. = 20.70'
INV. = 14.42'

SCALE: 1" = 30'

RCL
CONSULTING, LLC
Professional Engineering
Professional Surveying
Professional Construction
Administration

RICHARD G. LAMBERT
CONSULTING, LLC
521 N. Central Ave.
Slidell, LA 70458
Phone: 882-272-4440
Fax: 882-272-4440
81 Poplar Avenue, Slidell, LA 70458
848-077-2948
848-077-2949

This drawing and design is the intellectual property of RCL Consulting, LLC. It is to be used only for the project and location specified. No part of this drawing may be reproduced or transmitted in any form or by any means, electronic, mechanical, photocopying, recording, or by any information storage and retrieval system, without the prior written permission of RCL Consulting, LLC.

RCLC
Project Number: 0699
Date Issued: 02/08/07
Drawn By: BVE
Checked By: VE
Revisions:

ST. TAMMANY PARISH SHERIFF'S OFFICE
BROWNSWITCH ROAD
SLIDELL, LOUISIANA

CONSTRUCTION DOCUMENTS
UTILITIES LAYOUT PLAN
Sheet Number: **C3**