

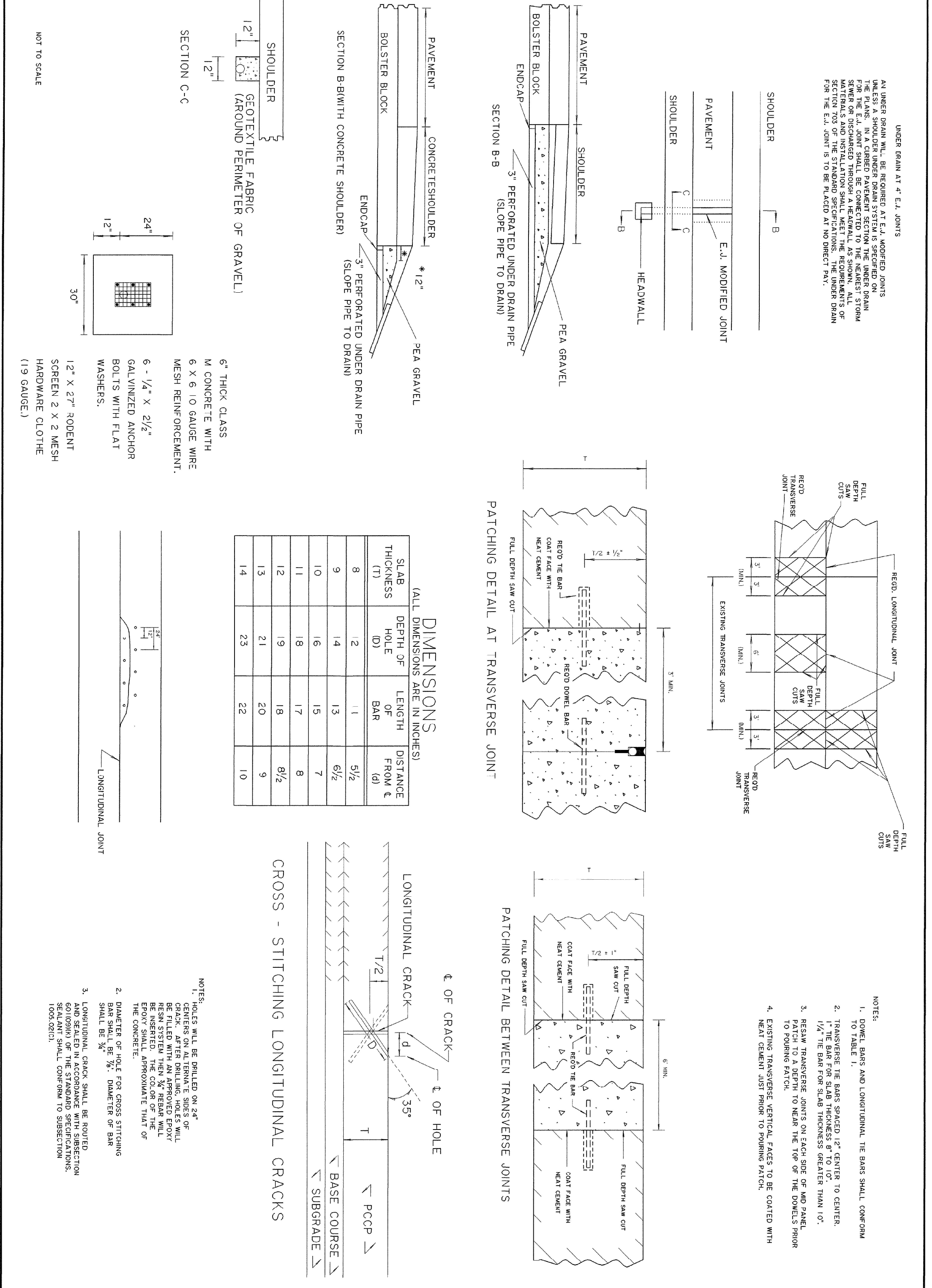
PORTLAND CEMENT CONCRETE PAVEMENT DETAILS

DATE: 10/27/07

DESIGNED BY: S. MCCAN

CHECKED BY: S. MCCAN

APPROVED BY: S. MCCAN



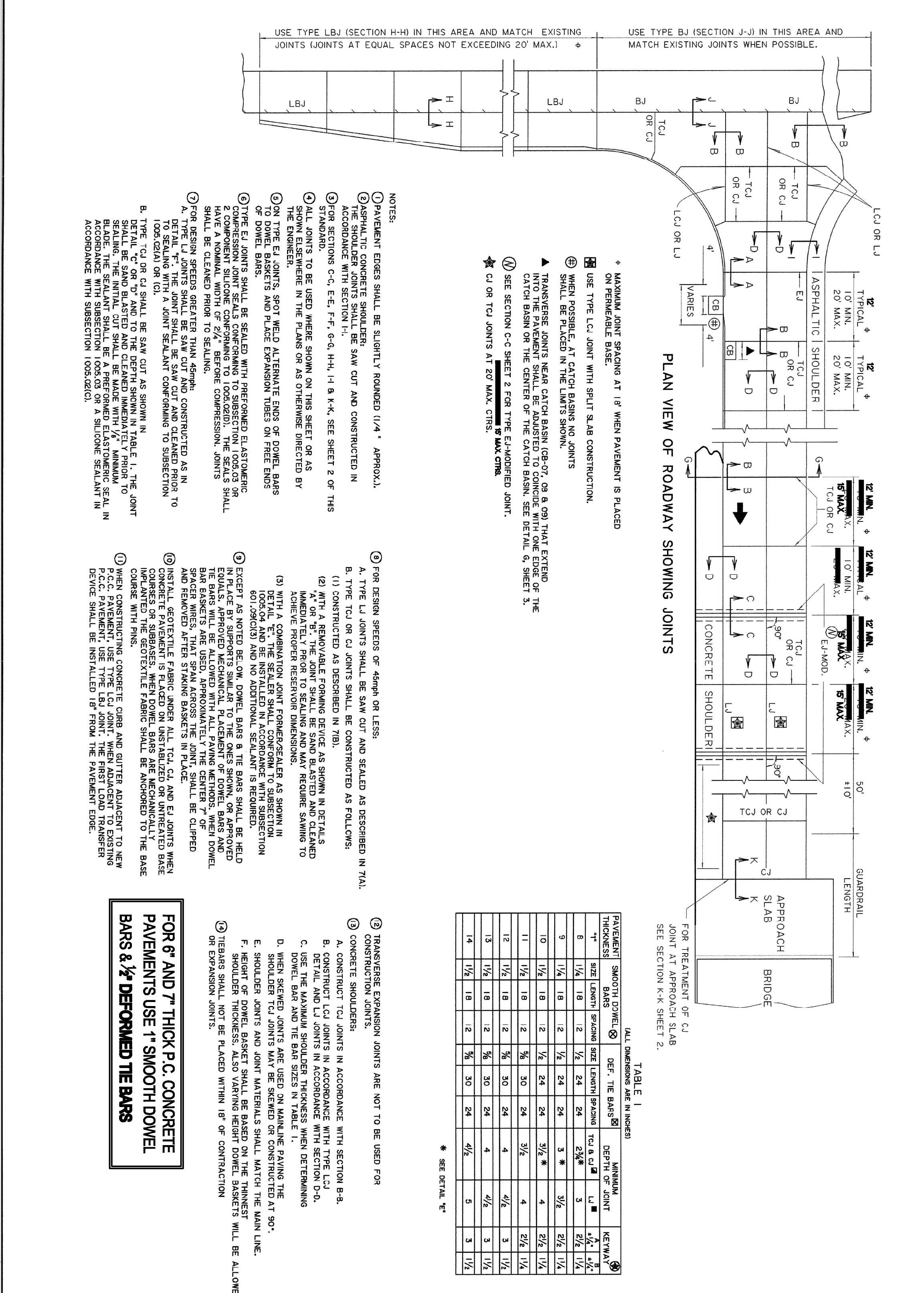
PORTLAND CEMENT CONCRETE PAVEMENT DETAILS

DATE: 10/27/07

DESIGNED BY: S. MCCAN

CHECKED BY: S. MCCAN

APPROVED BY: S. MCCAN



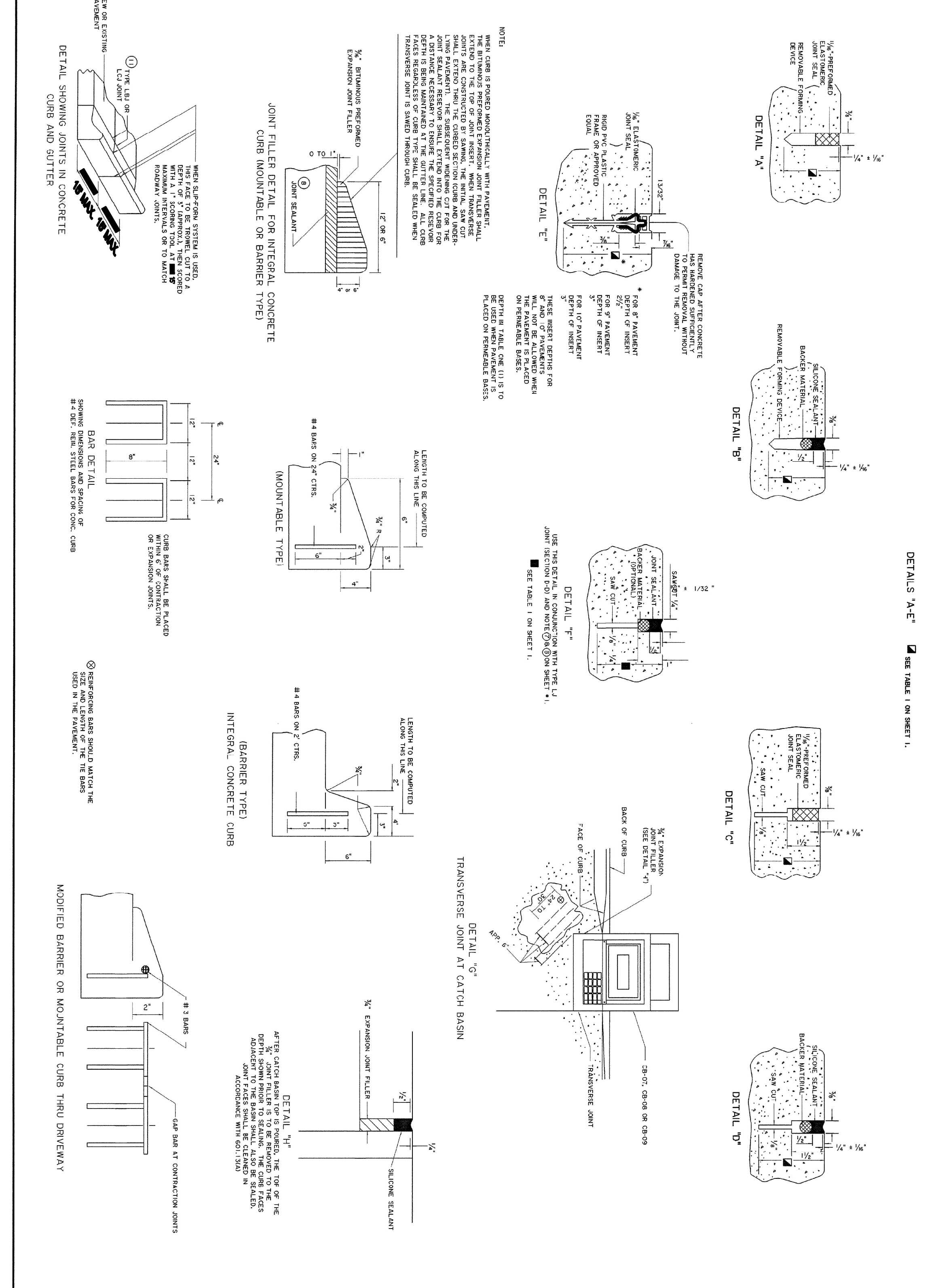
PORTLAND CEMENT CONCRETE PAVEMENT DETAILS

DATE: 10/27/07

DESIGNED BY: S. MCCAN

CHECKED BY: S. MCCAN

APPROVED BY: S. MCCAN



PORTLAND CEMENT CONCRETE PAVEMENT DETAILS

DATE: 10/27/07

DESIGNED BY: S. MCCAN

CHECKED BY: S. MCCAN

APPROVED BY: S. MCCAN

ST. TAMMANY PARISH SHERIFF'S OFFICE
BROWNSWITCH ROAD
SLIDELL, LOUISIANA

PAVING DETAILS
Sheet Number: **C9**

ROL
Professional Engineering
Construction Management

RICHARD C. LAMBERT
Professional Engineer
No. 11488
11488
11488
11488

Project Number: 0899
Date Issued: 03/23/07
Drawn By: BAF
Checked By: VE
Revisions: