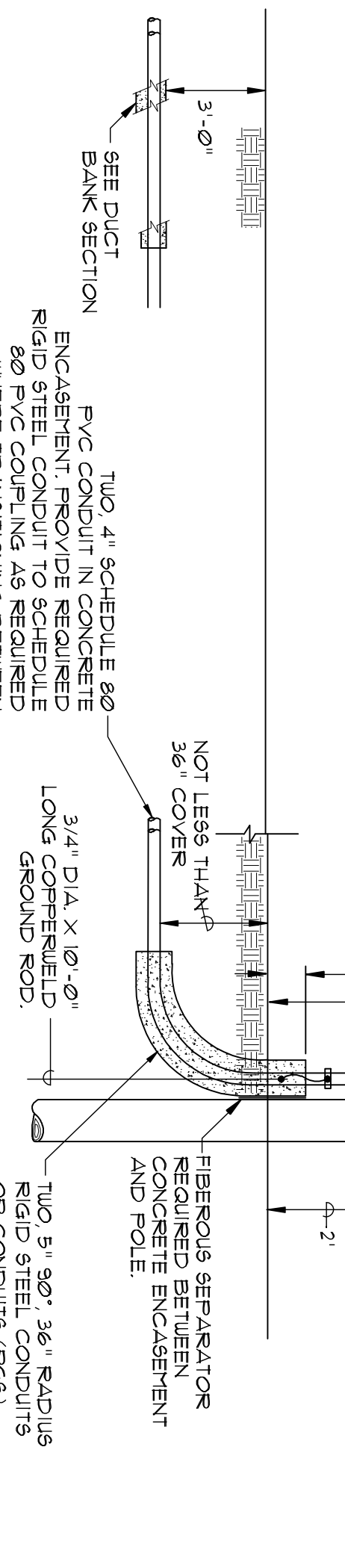
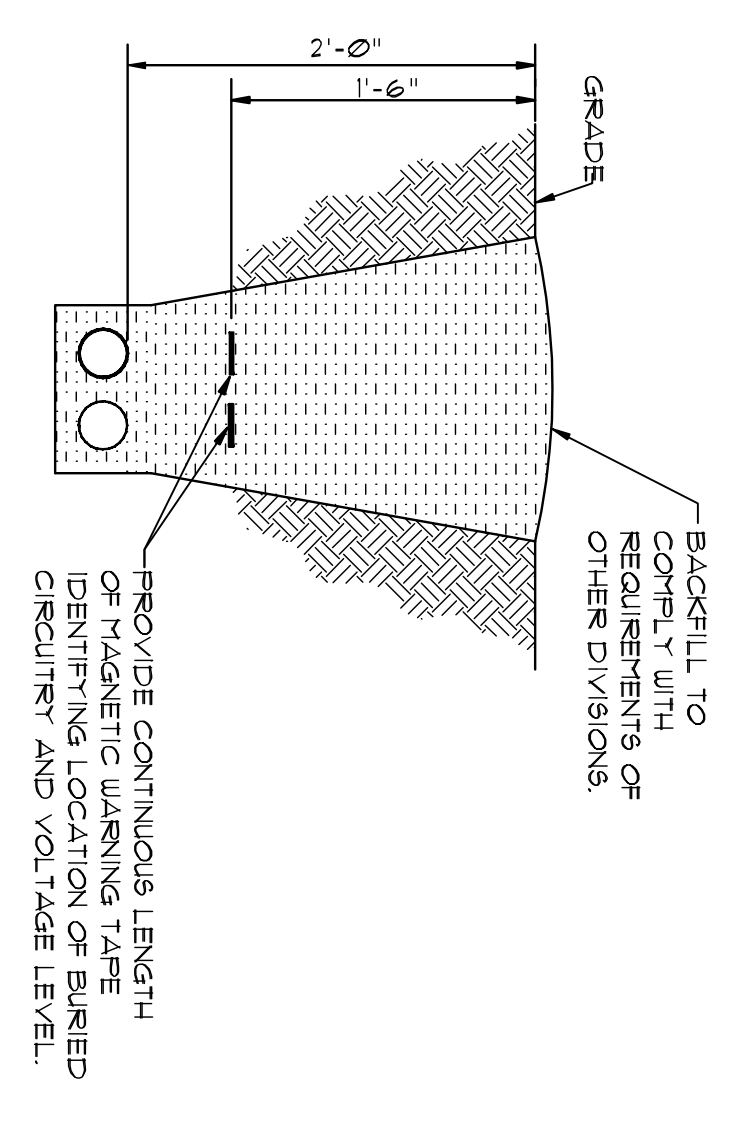


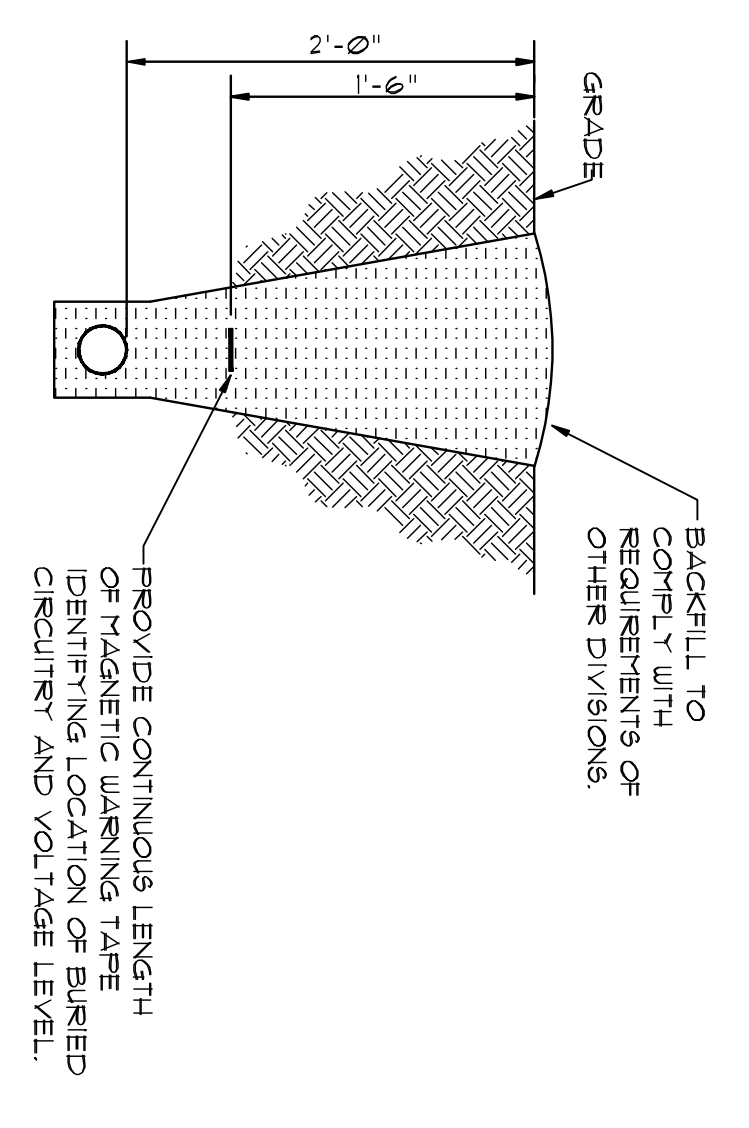
2 COMMUNICATION SERVICE ENTRANCE DETAIL
NO SCALE



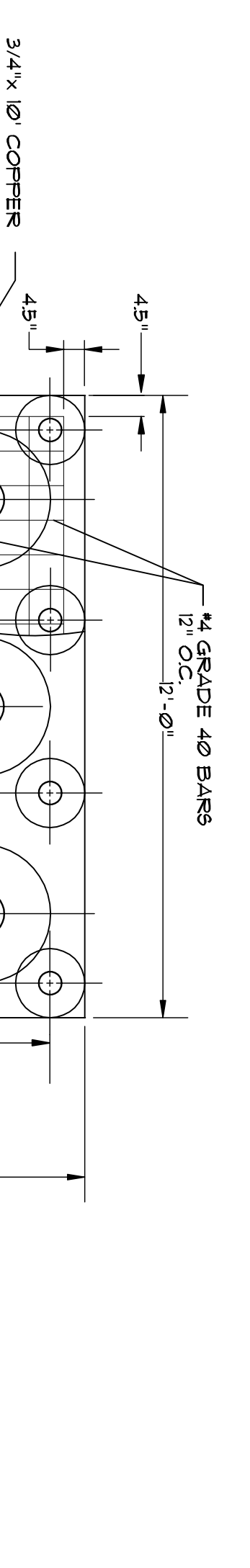
6 SECTION THROUGH CONDUIT BURIAL
NO SCALE



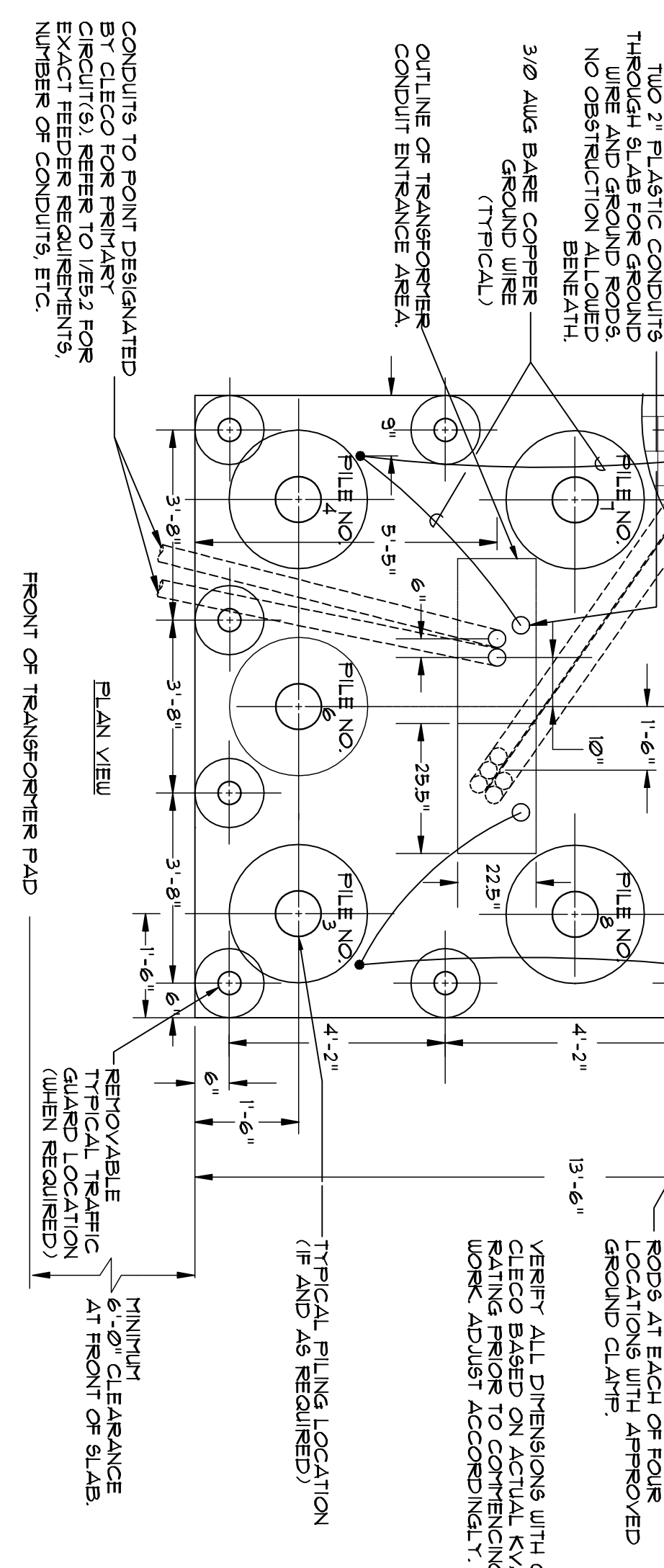
3 SECTION THROUGH CONDUIT BURIAL
NO SCALE



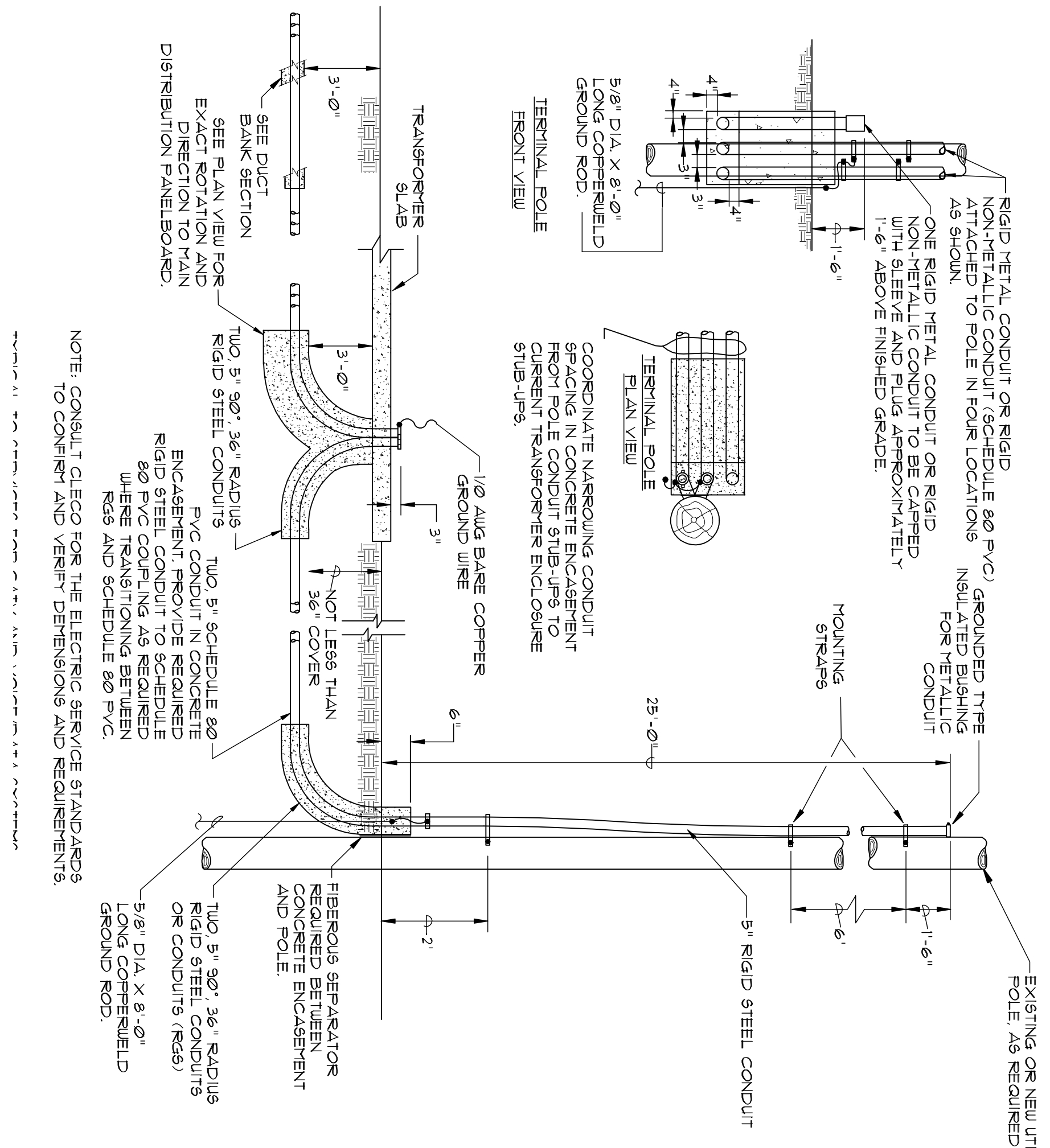
4 SECTION THROUGH DUCT BANK
NO SCALE



5 SECTION THROUGH DUCT BANK
NO SCALE

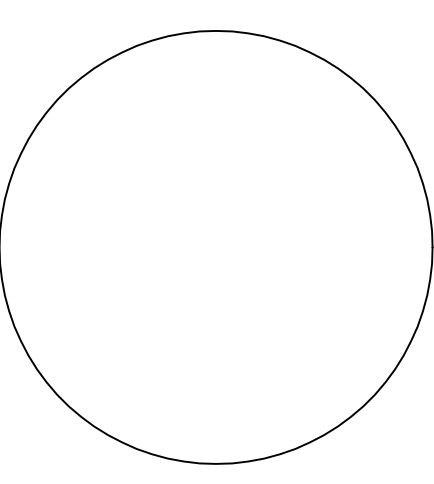


7 PULLBOX DETAIL
NO SCALE



1 SERVICE ENTRANCE POLE AND PAD DETAILS
NO SCALE

THIS DETAIL SHOWS TYPICAL TRANSFORMER PAD INSTALLATION BASED ON UTILITY COMPANY REQUIREMENTS. IT IS THE CONTRACTOR'S RESPONSIBILITY TO COORDINATE WITH THE ARCHITECT, CLECO AND THE OWNER TO OBTAIN THE NECESSARY PERMITS AND BOLASERS. COORDINATE INSTALLATION WITH OTHER DIVISIONS OF WORK. ADJUST THE WORK SHOWN AS REQUIRED TO ACCOMMODATE CLECO AND OTHER REQUIREMENTS. SOIL CONDITIONS (KVA, TON DIMENSIONS), LOCATION, ETC., REFER TO 1829 FOR EACH TYPICAL SHEET.



ST. TAMMANY PARISH SHERIFF'S OFFICE
BROWNSWITCH ROAD
SLIDELL, LOUISIANA

CONSTRUCTION DOCUMENTS

PROJECT: 0887
 DATE ISSUED: 05/15/07
 DRAWN BY: EDA
 CHECKED BY: EDA
 REVISORS:

RCL CONSULTING, LLC
 RICHARD C. LAMBERT
 CONSULTING, LLC
 821 N. Ochsley Blvd.
 Metairie, LA 70002
 Phone: 504-887-7447
 Fax: 504-887-7447
 Web: www.rclconsulting.com
 Email: rcl@rclconsulting.com

Engineering Design Associates, L.L.C.
 Consulting Engineers
 3320 Metairie Drive, Suite 110, Metairie, Louisiana 70002
 504-885-8889 • 504-885-9977 (fax) • ead@engineeringdesignassociates.com
 Copyright © 2007

SERVICE ENTRANCE DETAILS
 Sheet Number: E5.3