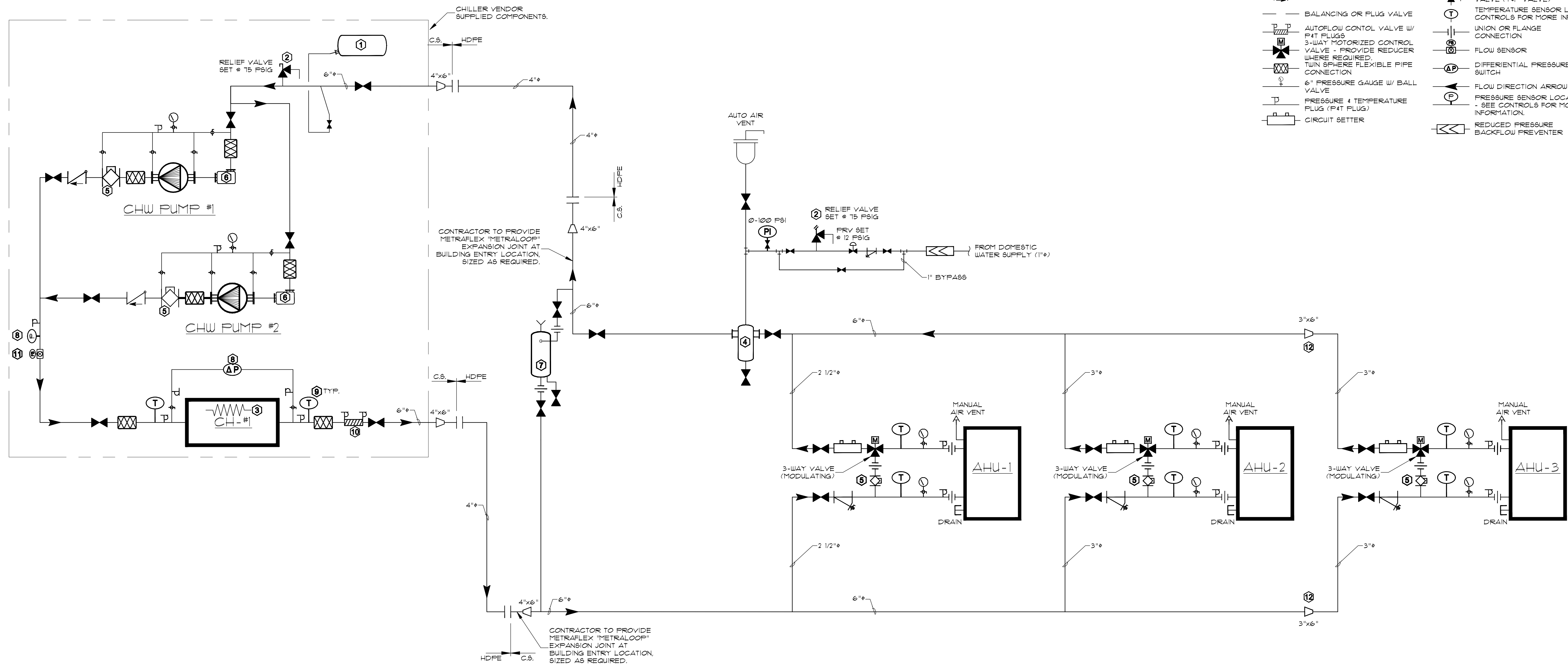


SYMBOL LEGEND

	ISOLATION VALVE - BALL OR BUTTERFLY		IN-LINE PUMP - PROVIDE REDUCERS AS REQUIRED.
	FULL PORT BALL VALVE		LINE SIZE STRAINER W/ BALL VALVE BLOWDOWN
	LUG TYPE BUTTERFLY VALVE		LINE SIZE SUCTION DIFFUSER
	BALL VALVE W/ HOSE END CONNECTION		MANUAL AIR VENT - DO NOT USE AUTOMATIC AIR VENTS, EXCEPT AT AIR SEPARATOR
	SILENT WAFER CHECK VALVE		TEMPERATURE & PRESSURE RELIEF VALVE (TAP VALVE)
	BALANCING OR PLUG VALVE		TEMPERATURE SENSOR LOCATION - SEE CONTROLS FOR MORE INFORMATION.
	AUTOFLOW CONTROL VALVE W/ FAT PLUGS		UNION OR FLANGE CONNECTION
	3-WAY MOTORIZED CONTROL VALVE - PROVIDE REDUCER WHERE REQUIRED.		FLOW SENSOR
	TWIN SPHERE FLEXIBLE PIPE CONNECTION		DIFFERENTIAL PRESSURE SWITCH
	6" PRESSURE GAUGE W/ BALL VALVE		FLOW DIRECTION ARROW
	PRESSURE & TEMPERATURE PLUG (FAT PLUG)		PRESSURE SENSOR LOCATION - SEE CONTROLS FOR MORE INFORMATION.
	CIRCUIT SETTER		REDUCED PRESSURE BACKFLOW PREVENTER



SPECIFIC NOTES

1. 24-GAL. BLADDER EXPANSION TANK 12" x 51" WITH ATF-12 TANK FITTING.
2. TEMPERATURE AND PRESSURE RELIEF VALVE.
3. CHILLER HEATER FOR FREEZE PROTECTION.
4. LINE SIZE AIR SEPARATOR - DO NOT PROVIDE STRAINER.
5. BALANCING VALVE - USE FOR SETTING FLOW DURING BALANCING PHASE ONLY. ONCE THE ACTUAL SYSTEM PRESSURE IS DETERMINED, TRIM PUMP IMPELLER AND OPEN VALVE. AFTER PUMP IMPELLER HAS BEEN TRIMMED, IF NECESSARY, VALVE MAY BE USED TO FINE TUNE SYSTEM BALANCE. SEE TEST AND BALANCE SPECIFICATIONS.
6. SUCTION DIFFUSER WITH STRAINER AND SUPPORT FOOT OR IN-LINE STRAINER. PROVIDE BOTH WITH START-UP STRAINER BASKETS WHICH SHALL BE REMOVED AFTER RUN-IN PERIOD AND BEFORE TEST AND BALANCE.
7. CHEMICAL POT FEEDER WITH UNIONS AND BALL VALVES. SIZE AS REQUIRED. SUPPORT FROM FLOOR WITH GALVANIZED STEEL SUPPORT LEGS. PROVIDE FOUR (4) INCH HIGH HOUSEKEEPING PAD FOR FLOOR MOUNTED POT FEEDER.
8. ANALOG DIFFERENTIAL PRESSURE SENSOR FOR MEASURING PRESSURE DROP ACROSS CHILLER AND FLOW THROUGH CHILLER. WIRE INTO RMC6.
9. TEMPERATURE SENSOR - SEE SEQUENCE OF OPERATION FOR NUMBERS. PROVIDE TAP PLUG UPSTREAM OF EACH TEMPERATURE SENSOR WELL.
10. AUTOMATIC FLOW CONTROL VALVE - SIZE AND INSTALL AS REQUIRED BY THE MANUFACTURER. VALVE BODY MAY BE LARGER THAN LINE SIZE.
11. PRIMARY CHILLED WATER FLOW SENSOR - INSTALL PER THE MANUFACTURER'S REQUIREMENTS AND RECOMMENDATIONS. SIZE FLOW SENSOR FOR THE MAXIMUM CHILLER WATER FLOW AVAILABLE.
12. LOCATE REDUCERS 15' MAXIMUM DISTANCE FROM COIL CONNECTIONS AT AHU-3.
13. SEE DIVISION 15 FOR SEQUENCE OF OPERATION OF WATER SYSTEM COMPONENTS.

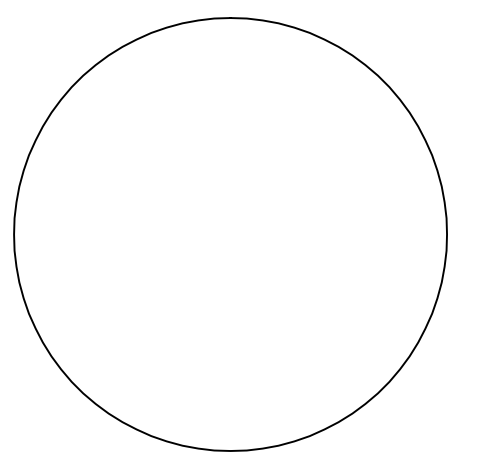
RCLC
Project Number: 0687

Date Issued: 05/15/07
Drawn By: EDA
Checked By: EDA

Revisions:

ST. TAMMANY PARISH SHERIFF'S OFFICE
BROWNSWITCH ROAD
SLIDELL, LOUISIANA

CONSTRUCTION DOCUMENTS



CHILLED WATER SCHEMATIC

Sheet Number:
M-1.4