



RICHARD C. LAMBERT
CONSULTANTS, L.L.C.
Planning
Architecture
Engineering
Construction
Management

221 N. Canaway Blvd.
Mandeville, LA 70448
882-727-4440
Fax: 882-727-4487

#1 Phyllis St., Ste. 1400 P10
New Orleans, LA 70130
504-587-7946

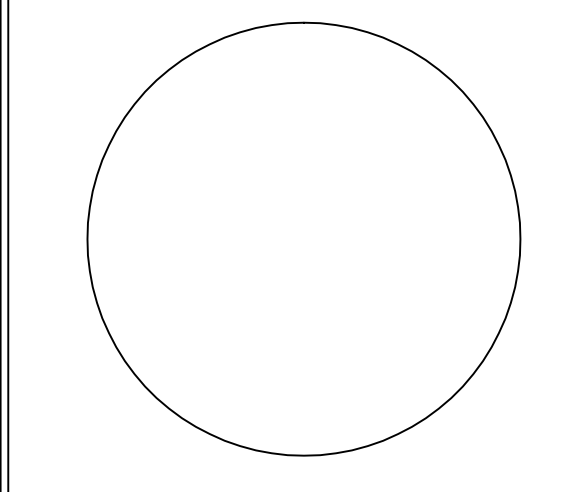
This drawing and design is the exclusive property of Richard C. Lambert Consultants, L.L.C. and may not be reproduced or used without authorization and written permission. © 2007

RCLC
Project Number: 0687
Date Issued: 05/15/07
Drawn By: EDA
Checked By: EDA

Revisions:

ST. TAMMANY PARISH SHERIFF'S OFFICE
BROWNSWITCH ROAD
SLIDELL, LOUISIANA

CONSTRUCTION DOCUMENTS

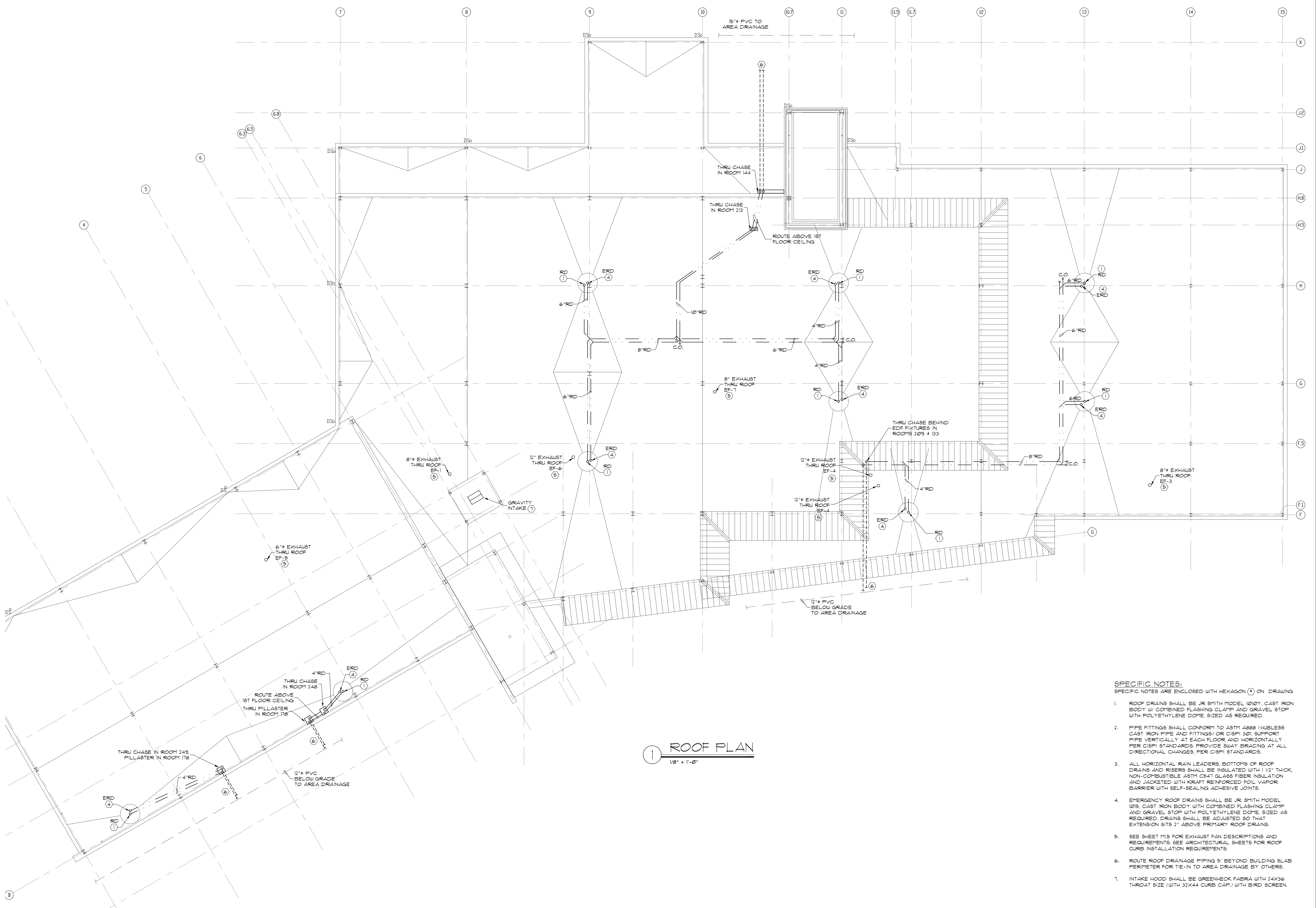


MECHANICAL ROOF PLAN

Sheet Number:

M-2.5

Engineering Design Associates, L.L.C.
Consulting Engineers
3330 Ridgeland Drive Suite 190 Metairie, Louisiana 70002
504 836 3889 - 504 836 3887 (fax) - eda@engineeringdesignassoc.com
Copyright © 2007



1 ROOF PLAN
1/8" = 1'-0"

- SPECIFIC NOTES:**
SPECIFIC NOTES ARE ENCLOSED WITH HEXAGON (⬡) ON DRAWING
- ROOF DRAINS SHALL BE JR SMITH MODEL 1010Y, CAST IRON BODY W/ COMBINED FLASHING CLAMP AND GRAVEL STOP WITH POLYETHYLENE DOME, SIZED AS REQUIRED.
 - PIPE FITTINGS SHALL CONFORM TO ASTM A888 (HUBLESS CAST IRON PIPE AND FITTINGS) OR CISPI 301, SUPPORT PIPE VERTICALLY AT EACH FLOOR AND HORIZONTALLY PER CISPI STANDARDS. PROVIDE SWAY BRACING AT ALL DIRECTIONAL CHANGES, PER CISPI STANDARDS.
 - ALL HORIZONTAL RAIN LEADERS, BOTTOMS OF ROOF DRAINS AND RISERS SHALL BE INSULATED WITH 1 1/2" THICK, NON-COMBUSTIBLE ASTM C541 GLASS FIBER INSULATION AND JACKETED WITH KRAFT REINFORCED FOIL VAPOUR BARRIER WITH SELF-SEALING ADHESIVE JOINTS.
 - EMERGENCY ROOF DRAINS SHALL BE JR SMITH MODEL 1015, CAST IRON BODY WITH COMBINED FLASHING CLAMP AND GRAVEL STOP WITH POLYETHYLENE DOME, SIZED AS REQUIRED. DRAINS SHALL BE ADJUSTED SO THAT EXTENSION SITS 2" ABOVE PRIMARY ROOF DRAINS.
 - SEE SHEET M15 FOR EXHAUST FAN DESCRIPTIONS AND REQUIREMENTS. SEE ARCHITECTURAL SHEETS FOR ROOF CURB INSTALLATION REQUIREMENTS.
 - ROUTE ROOF DRAINAGE PIPING 5' BEYOND BUILDING SLAB PERIMETER FOR TIE-IN TO AREA DRAINAGE BY OTHERS.
 - INTAKE HOOD SHALL BE GREENHECK FABRA WITH 24X36 THROAT SIZE (WITH 32X44 CURB CAP) WITH BIRD SCREEN.