



7943 PECUE LANE SUITE A BATON ROUGE, LA 70809 TEL (225) 291-2700 FAX (225) 291-2788

To: Fourrier and de Abreu Engineers, LLC.
 Address: 10995 Coursey Boulevard
Baton Rouge, LA 70816
 Phone: 225-677-7950
 Attention: Mr. Ricardo de Abreu
 Email: ricardo@fdaengineers.com

Date: 8/30/19
 Job Name: Tangipahoa Cell 14
 Transmittal Number: 04
 ESI Project Number: 19-05-1191
 From: Kerry Dugas / Ashton Vidrine

We are sending you: Attached Under Separate Cover Via _____ the following items:
 Shop Drawings Prints Plans Samples Specifications
 Copy of Letter Change Order _____

Copies	Date	Submittal #	REV	Description	Action
1	8/30/19			CP 5937 Control Panels	FA

Sent Via: E-Mail US Mail Overnight Hand Delivered Other _____

If enclosures are not as noted, please notify us at once.....

COX

Research and Technology, Inc.

TANGIPAHOA LANDFILL

CELL 14

LEACHATE PUMP

CONTROL PANEL

PROJECT SUBMITTAL

PLEASE REVIEW THOROUGHLY. THESE DRAWINGS ARE OUR
INTERPRETATION OF THE PROJECT'S REQUIREMENTS. ANY
CHANGES AFTER FABRICATION WILL BE DONE AT EXTRA COST.

AUGUST 22, 2019

Cox Research and Technology, Inc.
PO Box 77808
Baton Rouge, LA. 70879
(225) 756-3271 Fax (225) 755-1030


SOLD TO:
TAG: Tangipahoa Landfill Cell 14 Leachate
Pump Control Panel

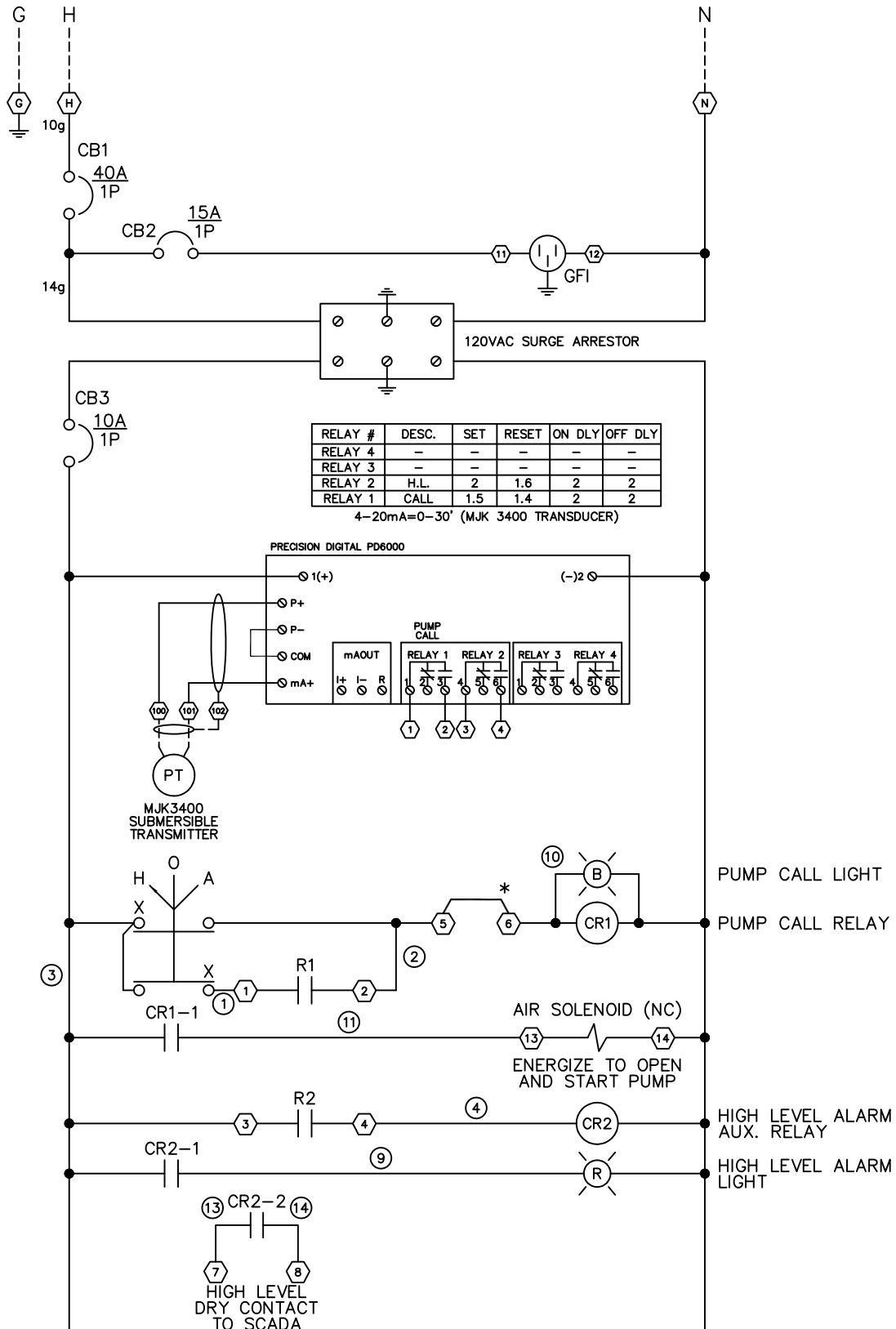
SHIP TO:
-
-

SPECIAL NOTES:

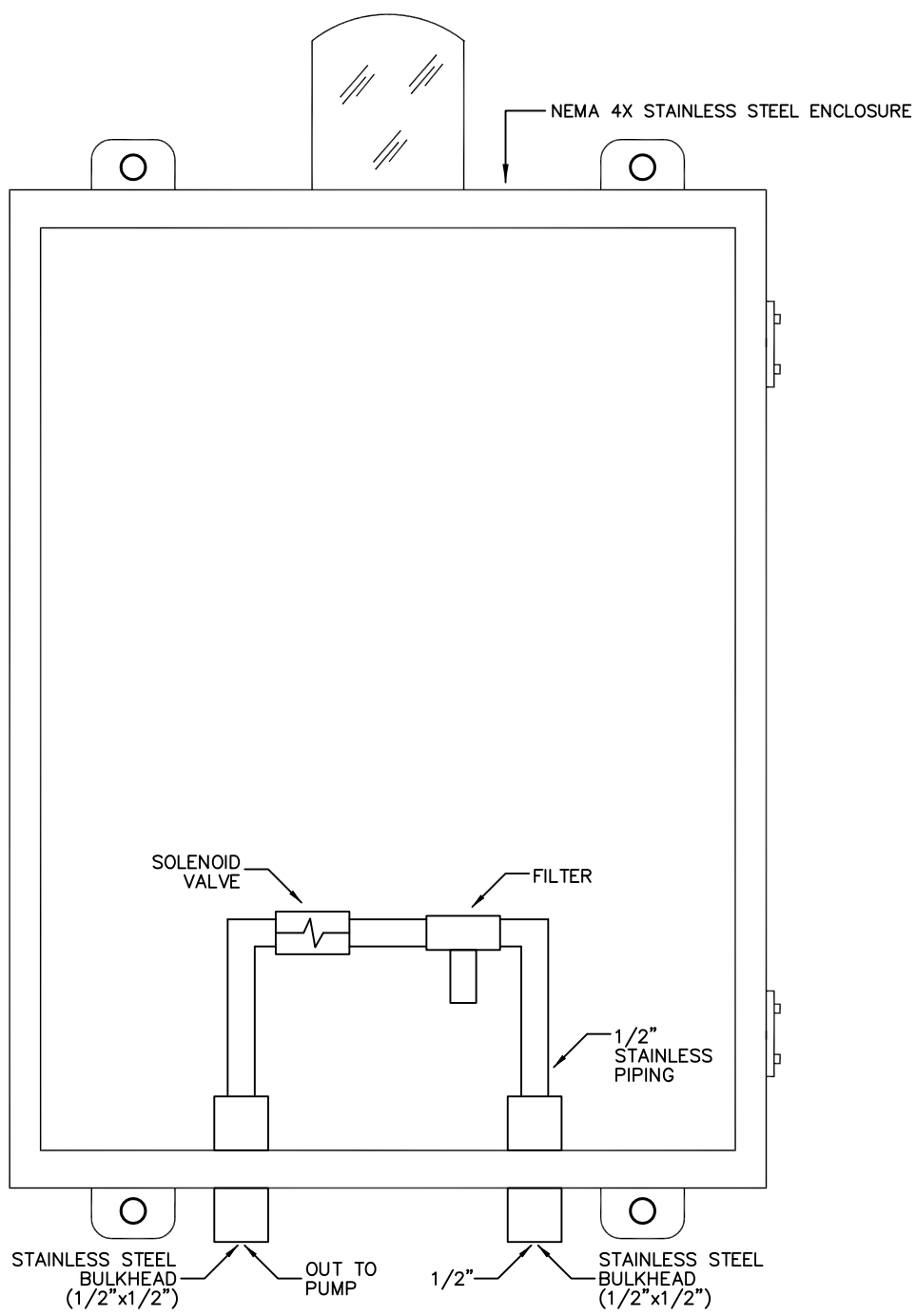
Alarm Light - Panel Door Mount	
Alarm Light - Panel Top Mount	X
Alarm Light - Remote	
Alarm Test Switch	
Alarm Silence Switch	
Alarm Acknowledge Switch	
Alternator with Lead Pump Selector Switch	
Audible Alarm - Bell	
Audible Alarm - Horn	
Audible Alarm - Piezo	
COX™ CAMO™ System	
Cycle Counters	
Economy Version	
Elapsed Time Meter	
Flasher	
Green Run Lights vs. Red	
Ground Fault Receptacle	
High Temp Lights	
High Temp Pump Shutdown - Auto Reset	
High Temp Pump Shutdown - Manual Reset	
Intrinsically Safe Relays Pts.	
Lightning Arrestor	
Main Disconnect with Door Mt. Handle	
Opti-Float® Level Detector Pts.	
Panel Heater / Thermostat W=	
Phase Monitor	
Pole, Box, Seal	
Seal Fail Lights	
Seal Fail Relay - Fixed	
Seal Fail Relay - Adjustable	
Seal Fail Shutdown	
Starters - IEC	
Starters - NEMA	
Unpowered Alarm Circuits #	
OTHER: Precision Digital PD6000 Controller, MJK 3400 Transducer.	

Panel Type	Simplex
Voltage	120V
Phase/HZ	1/60
No. Motors	1
HP	N/A
FLA	N/A
Pump Manufacturer	-
Type of Pump	Diaphragm
Catalog Number	-
Capacitors	No
Control Voltage	120V
Control Power Transformer VA=	No
Enclosure NEMA Rating	4X
Enclosure Material	Stainless Steel
Enclosure Size	24x20x10
Inner Swing Panel	Yes
Control Sensor	Transducer
UL508A Labeling	Yes
UL698A Labeling	No

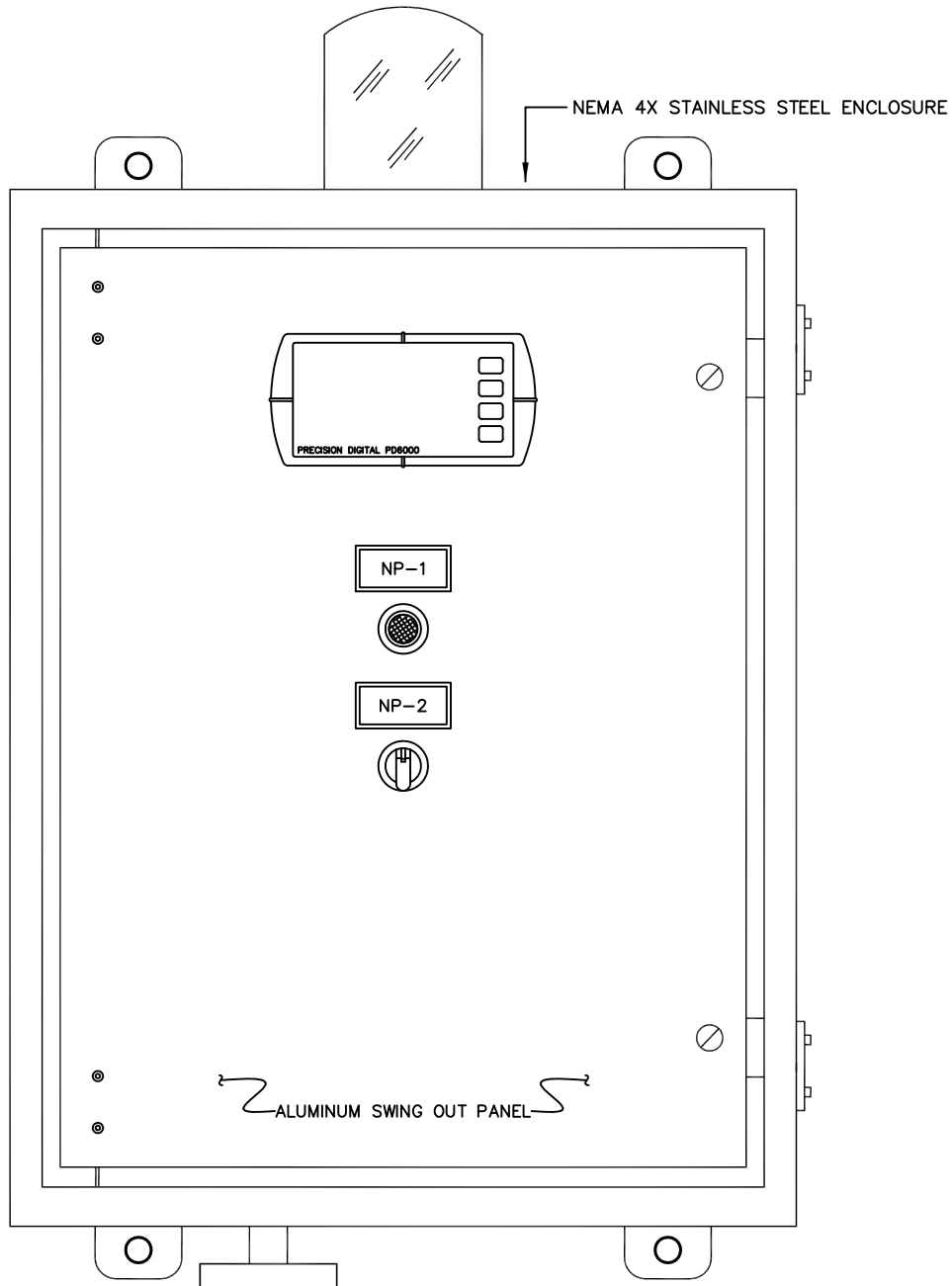
Drawing Title											
PANEL DESCRIPTION		-		-		-		-		-	
		REFERENCE DRAWING		NO.		REVISION - LOCATION		ECN		DATE	
		S/N		Sales Engineer N.B.		Application Engineer N.B.		DRAWN		APPROVED	
DATE: 08/22/19	Project Title		<div style="text-align: center;">  Research and Technology, Inc. </div>		P.O. Box 77808 Baton Rouge, LA 70879		BY:		DATE:		
LEACHATE PUMP CONTROL PANEL		PURCHASE ORDER NUMBER									
		DRAWING NUMBER CP-5937									
				Ph. (225) 756-3271 Fax (225) 755-1030		SHEET NUMBER		1			



Drawing Title										
POWER DIAGRAM										
DATE:	08/22/19	REFERENCE DRAWING	S/N	NO.	SALES ENGINEER	APPLICATION ENGINEER	REVISION - LOCATION	ECN	DATE	BY
Project Title		Sales Engineer		Application Engineer		DRAWN		APPROVED		
LEACHATE PUMP CONTROL PANEL		N.B.		N.B.		N.B.		BY: DATE:		
		COX Research and Technology, Inc.		P.O. Box 77808 Baton Rouge, LA 70879 Ph. (225) 756-3271 Fax (225) 755-1030		PURCHASE ORDER NUMBER				
						DRAWING NUMBER CP-5937				
						SHEET NUMBER 2				



Drawing Title											
ENCLOSURE											
		REFERENCE DRAWING		NO.		REVISION - LOCATION		ECN DATE BY			
DATE: 08/22/19	S/N		Sales Engineer N.B.		Application Engineer N.B.		DRAWN		APPROVED		
Project Title		COX Research and Technology, Inc.		P.O. Box 77808 Baton Rouge, LA 70879 Ph. (225) 756-3271 Fax (225) 755-1030		BY:		DATE:		PURCHASE ORDER NUMBER	
DUPLEX PUMP CONTROL PANEL						DRAWING NUMBER		CP-5937			
						SHEET NUMBER		3			



VIEW OF INNER SWING PANEL

NAMEPLATE SCHEDULE

- NP-1 PUMP CALL
- NP-2 HAND-OFF-AUTO

NOTE:
SEWER GASSES WILL DESTROY COMPONENTS IN PANEL.
PROPER SEALS MUST BE INSTALLED EXTERNAL TO THE
PANEL TO PREVENT ENTRY OF GASSES.

Drawing Title		ENCLOSURE							
DATE: 08/22/19		REFERENCE DRAWING	NO.	REVISION - LOCATION	ECN	DATE	BY		
Project Title		S/N	Sales Engineer N.B.	Application Engineer N.B.	DRAWN	APPROVED		PURCHASE ORDER NUMBER	
DUPLIX PUMP CONTROL PANEL		COX Research and Technology, Inc.			P.O. Box 77808 Baton Rouge, LA 70879		BY: DATE:		DRAWING NUMBER CP-5937
					Ph. (225) 756-3271 Fax (225) 755-1030		SHEET NUMBER		4

BILL OF MATERIALS

ITEM	QTY.	MANUFACTURER	PART NUMBER	DESCRIPTION
1	1	HOFFMAN	CSD242010SS	ENCLOSURE
2	1	COX RESEARCH	CAM0242010CSD	BACKPLATE/SWING PANEL
3	1	SQUARE D	QOU140	CB1
4	1	SQUARE D	QOU115	CB2
5	1	SQUARE D	QOU110	CB3
6	1	HUBBELL	GF15GYLA	GFI RECEPTACLE
7	1	TPS	TK-LT120-15A-DIN2	SURGE SUPPRESSOR
8	1	PRECISION DIG.	PD6000-6R7	SETPOINT CONTROLLER
9	1	MJK	3400 (209995-75)	SUBMERSIBLE TRANSDUCER
10	1	ABB	C3SS110B-20	H.O.A. SWITCH
11	1	ABB	CL513L	BLUE PILOT LIGHT
12	1	CONERY	R40-XLS	ALARM LIGHT
13	1	ASCO	8210G002	AIR SOLENOID VALVE
14	2	IDEC	RY4SULCAC120	CR1,2
15	1	HOFFMAN	GPDLOCKHDL	PAD LOCK HANDLE
16	1	MASTER PNEUMATIC	CF5AR350	FILTER/REGENERATOR
17	LOT			STAINLESS FITTINGS
18				
19				
20				
21				
22				
23				
24				
25				
26				
27				
28				
29				
30				

Drawing Title									
BILL OF MATERIALS		-		-		-		-	
		REFERENCE DRAWING	NO.	REVISION - LOCATION		ECN	DATE	BY	
DATE: 08/22/19	S/N		Sales Engineer N.B.	Application Engineer N.B.	DRAWN N.B.		APPROVED		
Project Title		COX Research and Technology, Inc.			P.O. Box 77808 Baton Rouge, LA 70879		PURCHASE ORDER NUMBER		
DUPLEX PUMP CONTROL PANEL					Ph. (225) 756-3271 Fax (225) 755-1030		DRAWING NUMBER CP-5937		
					SHEET NUMBER 5				