



## City of Slidell

**FREDDY DRENNAN, Mayor**  
Post Office Box 828 • Slidell, Louisiana 70459  
Telephone (985) 646-4250 Fax (985) 847-1522

**August 2, 2011**

### **REQUEST FOR WRITTEN QUOTES**

The City of Slidell is soliciting written quotes for Park Drive Improvements / Park Place subdivision. The project is located at the intersection of Park Drive and Middle Drive. Quotes will be received until **10:00 a.m., Thursday, August 11, 2011 and shall be hand delivered to the Purchasing Department located at 1329 Bayou Lane or mailed to P.O. Box 828, Slidell, LA. 70459, Attn: Purchasing Agent.**

Quotes must be submitted in a sealed envelope and clearly marked:

Quote: Park Drive Improvements  
Quote #12-Q006  
File Number 600-122

Due: Thursday, August 11, 2011

Specifications are attached. The successful contractor shall have **forty five calendar days** to complete this project from the date of the Notice to Proceed.

In the event that the successful quote exceeds \$25,000, the contractor will be required to provide a payment and performance bond in the amount of not less than 100% of the awarded contract amount. Performance and Payment Bond will be required upon award of contract.

Quotes exceeding \$50,000 – A Louisiana State Contractor License is required to perform the work and your license number shall be included in your quote.

An executed affidavit will be required prior to award of contract. *Certificate of Liability Insurance and Statutory Limits Worker's Compensation* must be submitted prior to award of contract.

**There will be a mandatory pre-quote meeting at the City Engineering Department Conference Room at 250 Bouscaren Street, Ste. 302, Slidell, LA 70458 on Tuesday, August 9, 2011 at 9:00 a.m.**

Submissions shall be submitted on the forms provided. Prices shall include materials, installation, and site cleanup. An authorized company representative shall sign quotes.

Any questions concerning this project shall be directed to Chuck Dammon, Dammon Engineering at 985-649-5832. Dammon Engineering shall hereinafter referred to as the Engineer.

**QUOTE FORM for Park Drive Improvements Project, Park Place Subdivision, City of Slidell, LA**  
**Quote 12-Q006**  
**Slidell File No. 600-122**

ITEM NO.	ITEM DESCRIPTION	QUAN.	UNIT	UNIT PRICE	ITEM PRICE
1	Removal of Concrete	435	SY		
2	Roadway Excavation	95	CY		
3	Granular Base Course	95	CY		
4	New Concrete Roadway	405	SY		
5	New Concrete Sidewalks	30	SY		
6	Remove Drain Pipe & Replace with 15-in RCPA	24	LF		
7	Handicap Ramps	3	EA		
8	Sod	90	SY		

**NOTE: *The Above Quantities are approximate and may be adjusted in the field.***

---

**TOTAL QUOTE PRICE IN FIGURES**

---

**TOTAL QUOTE PRICE IN WORDS**

## **SPECIFICATIONS**

This project consists of demolition and replacement of concrete streets, sidewalks, and culverts as shown on the plans. All work shall take place in the area of the intersection of Park Drive and Middle Drive, in the Park Place subdivision.

Traffic control shall be maintained by the contractor at all times, as necessary. Traffic control shall include any and all temporary signs, barricades, or other labor, equipment, and materials required for adequate traffic control.

### **Removal of Concrete**

This item covers work generally associated with breaking up, and removing existing Portland Cement Concrete Pavements. **Breaking up of PCC Pavement shall be done with a pneumatic pavement breaker. Use of brute force and pounding with excavation buckets will not be an acceptable means of breaking pavement.** Should the City desire, the Contractor will dump the broken concrete at a disposal site designated by the City at no extra cost. Also should the City desire, the Contractor will load the broken concrete into City trucks at the work site at no extra cost, provided that the City trucks are present at the work site and cause no unreasonable delay in the work

The accepted quantities of concrete removed shall be paid for at the contract unit price per square yard for the thickness measured at the site. Bid prices should include all costs for labor, equipment, and materials necessary to remove existing PCC Pavement. Disposal of excavated material shall be included in this pay item.

### **Roadway Excavation**

The contractor shall furnish all materials, labor, and equipment necessary to remove all earth, rock, water, debris, and other materials to the extent required by the Engineer, in preparation for roadway base. Excavation will be paid by cubic yard by computing theoretical excavation volume. Disposal of excavated material shall be included in this pay item.

Should the City desire; the Contractor will dump excavated material at a disposal site designated by the City at no added cost. Additionally, should the City desire, the Contractor will load excavated material onto City trucks at the work site at no added cost, provided that the City trucks are present at the work site at the time of excavation and cause no unreasonable delay in progress of the work. However, the ultimate responsibility for disposal of all of the excavated material to satisfy all local, state, and federal regulation rests with the Contractor.

### **Granular Base Course**

Specifications for base course shall be in accordance with referenced section in the Louisiana Standard Specifications for Roads and Bridges, latest edition and revisions, Section 1003.

Granular material shall conform to the following requirements:

Liquid limit (maximum)	25% (percent)
Plasticity index (max.)	6% (percent)

Granular material will be paid for by the cubic yard truck measure. The bid price shall include all costs for material, labor, equipment, hauling, placing, spreading, compacting and grading for this item.

**Concrete Roadway and Sidewalks**

Fiber-reinforced concrete roadway shall include all materials and installation as specified below:

**Mix for 1 C.Y. of Fiber-Reinforced Concrete**

28-day strength	4000 psi
Cement (ASTM C-150, Type I/II)	4.64 sacks (436 lbs.)
Fly Ash (ASTM C-618)	1.16 sacks(109 lbs.)
Gravel (ASTM C-33, Grade A)	1775 lbs.
Sand (ASTM C-33)	1226 lbs.
Water (potable)	30 gallons (250 lbs.)
Type A Water Reducer (ASTM C-494)	16.35 lbs.
Air entrainment specifications	5% by volume, use per manufacturers specifications
Fiber reinforcement	As specified below or approved equal

Fiber reinforcement for all concrete roadways shall be Fibermesh 650, or approved equal, applied throughout the concrete mixture. Macro synthetic fibers shall provide a minimum average residual strength per ASTM C 1399 of 162 psi at three pounds per cubic yard, and 216 psi at four pounds per cubic yard of concrete. Alternate products shall be preapproved by the Engineer in writing. Fibrillated and self-fibrillating fibers are specifically prohibited from use. Macro fiber dosage rate shall be three pounds per cubic yard of concrete.

Fiber reinforcement for all concrete roadways and sidewalks shall be micro polypropylene fibers, applied to the concrete mixture at the rate of one and one-half pounds per cubic yard of concrete. Cellulose (treated or untreated), AR glass, nylon, and polyester fibers are specifically prohibited from use.

**All fiber reinforcement shall be applied at the plant.** The bags must be broken before mixing. Bag size shall be one (1) pound.

Damaged or missing transverse dowel bars shall be replaced with #5 x 24" painted smooth dowel bars on 24" centers, unless directed otherwise by the Engineer. The bars shall be drilled and doweled into the existing pavement by drilling 1" holes to a depth of

12" and filling with an approved epoxy grout before insertion of the dowel bars. Any deformed bars for longitudinal joints will be incidental to the bid unit prices under this item. All costs incurred for this task will be incidental to bid unit prices under concrete paving. Bid prices shall also include adequate curing of the concrete placed and the proper sealing of contraction and expansion joints.

Unit prices should include all costs for labor, equipment, and materials necessary to provide finished Portland Cement Concrete paving, in place, as described under this item of the proposal. All required jointing materials should be included in price under each item. Method of jointing shall be the same as the existing joints in the area of work.

Unit prices under this item shall also include cost of layout as required to improve the roadway alignment, curb and gutter layout, drain line installation, etc. Compensation for this shall be incidental to corresponding bid items in the maintenance contract. There is no other compensation. All layouts shall be the responsibility of the contractor. The Contractor shall be responsible for disposal of all construction materials, including excavated material.

Concrete pavement shall be cured seven (7) days unless otherwise approved by the Engineer. If Contractor uses "high early" strength concrete (3-day curing period) at his discretion, without the approval of the Engineer, payment shall be made under the regular (7-day curing) concrete paving item. Contractor shall be responsible for proper oversight and protection of the pavement during the initial curing time until the concrete is sufficiently set to resist marring or vandalism.

Fiber-reinforced concrete pavement shall be paid per square yard installed.

**Drainage Excavation, Backfill, and Pipe Installation**

All cost of labor, materials, and equipment required for excavation, removal of existing drain pipe, backfill, bedding, compaction, and installation of 15-inch RCPA drain pipe, as shown on the plans, shall be paid per linear foot of pipe and shall include all labor, materials, and equipment necessary to provide a complete installation. All excavated material shall be hauled away by the Contractor. Transportation and disposal of excavated material shall be included in this pay item. Granular backfill material shall be as specified for granular base material above.

Each joint shall be wrapped with filter cloth 36" wide and overlapped no less than 1/2 of the pipe diameter. The cost of the filter cloth wrap shall be included at no direct pay. The filter cloth shall be fastened to prevent movement during backfilling. Filter cloth fabric shall be an approved geotextile filter fabric capable of retaining the soil. The filter fabric shall be Mirafi 700 X 4 oz. or an approved equal (except on non-gasketed joints, which shall be 8 oz.).

All pipes shall be installed true to line and grade, or as established by the Engineer and free from crack or defects. The interior of the pipe shall be free from all dirt, excess water, and other foreign materials as the pipe laying progresses, and left clean at the

completion of the installation. All labor, equipment, and materials required to establish lines and grades will be provided at no direct pay.

**Handicap Ramps**

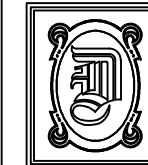
Handicap ramps shall consist of truncated dome tile that is a minimum of ¼-inch thick with embedded truncated domes, 3-inches on center through entire length of tile. Tile surface shall be covered with protective plastic sheeting. Each handicap ramp shall consist of only one tile, which shall be anchored into the concrete. Payment for handicap ramp shall be measured per each installed truncated dome tile with anchoring system.

**Sod**

Approved sod shall be either field grown or nursery grown grass. Sod should be St. Augustine or Centipede unless otherwise directed by the Engineer.

The handling, planting, rolling, and watering shall be in accordance with the appropriate section of the Louisiana Standard Specifications for Roads and Bridges, latest edition and revisions, Section 714.

Payment for this item shall be per square yards installed and shall include furnishing, hauling, planting, rolling, watering, and maintaining live grass sod at locations directed by the Engineer



DAMMON ENGINEERING, INC.

CHIEF ENGINEER  
EMMETT DAMMON, P.E.

CHIEF ARCHITECT  
ROBERT WILTSE

554 OLD SPANISH TRAIL  
SLIDELL, LA. 70458  
OFFICE: 985-649-5832  
FAX: 985-641-5950

WEBSITE:  
WWW.DAMMONENGINEERING.COM

EMAIL:  
DAMMONENG@BELLSOUTH.NET

ARCHITECTURE  
ENGINEERING  
STUDIES  
PLANNING  
INVESTIGATION  
EXPERT WITNESS

T J

PARK DRIVE  
IMPROVEMENTS  
SLIDELL PROJECT  
600-122

INTERSECTION OF  
PARK DR. AND  
MIDDLE DRIVE  
SLIDELL, LA  
70458

PAVING PLAN

REV:

SCALE: AS NOTED

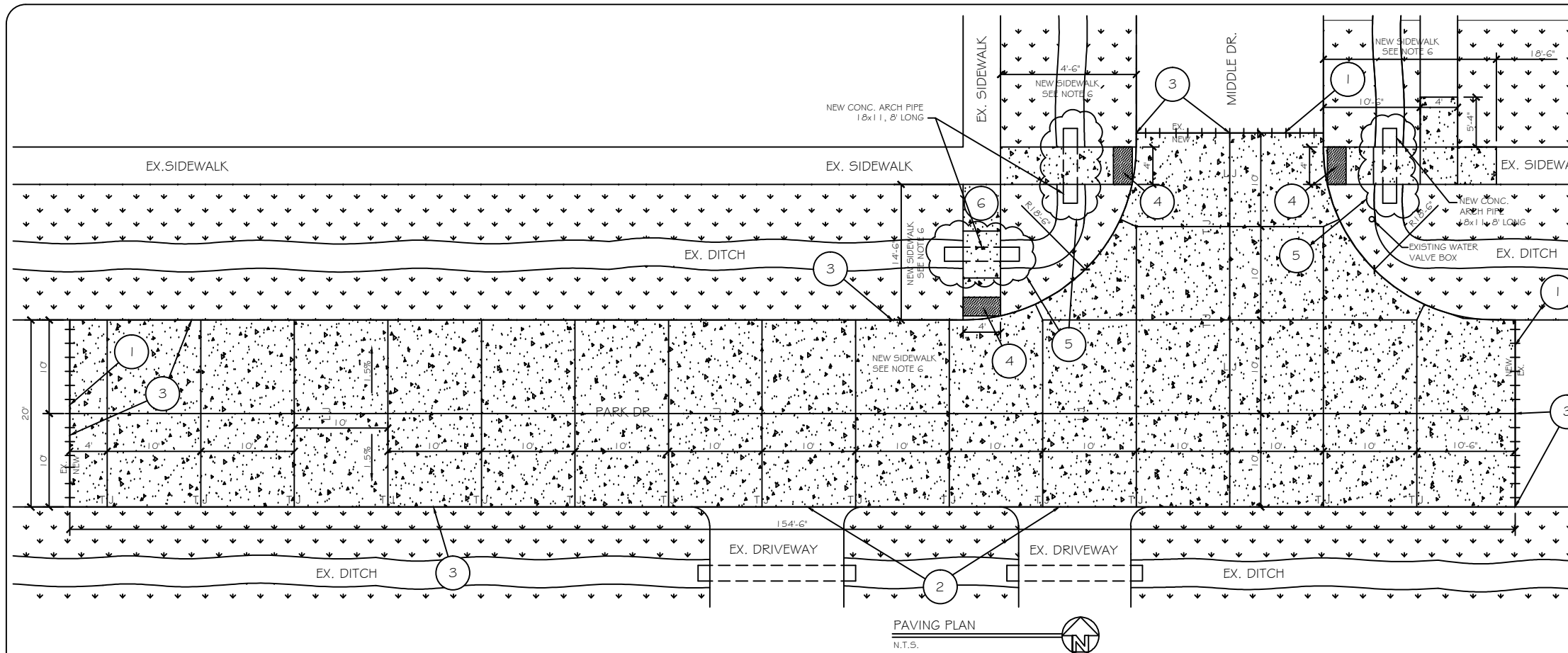
JOB#: 2115

DATE: 06-06-11

SHEET

C-1

OF



GENERAL NOTES:

- 1) ALL NEW CONCRETE SHALL HAVE A MINIMUM COMPRESSIVE STRENGTH OF 4,000 PSI AT 28 DAYS AND A MINIMUM THICKNESS OF 8" (STREETS) AND 4" (SIDEWALKS). CONCRETE MIX SHALL BE IN ACCORDANCE WITH THE LATEST REVISION OF ASTM C-150 TYPE 1.
- 2) FIBER REINFORCEMENT FOR ALL CONCRETE ROADWAYS AND SIDEWALKS SHALL BE AS NOTED IN THE SPECIFICATIONS.
- 3) ALL REINFORCING STEEL SHALL MEET ASTM-A615 (GRADE 60).
- 4) ALL REINFORCING STEEL SHALL BE SECURELY SUPPORTED TO PREVENT BOTH VERTICAL AND HORIZONTAL MOVEMENT DURING CONCRETE PLACEMENT. ALL CONTROL AND EXPANSION JOINTS SHALL BE LOCATED AND INSTALLED AS SHOWN ON THE PAVING PLAN AND IN ACCORDANCE WITH THE MANUFACTURER'S RECOMMENDATIONS.
- 5) ALL PIPE BEDDING AND BACKFILL SHALL BE SELECT GRANULAR MATERIAL COMPACTED TO 100% MAX. MODIFIED AASHO DENSITY IN A MAXIMUM OF 6" LIFTS. USE HIGH PLASTICITY INDEX (PI) AT THE END LOCATION OF NEW PIPES TO PREVENT EROSION.
- 6) CONTRACTOR SHALL CONTACT THE CITY OF SLIDELL CITY ENGINEER PRIOR TO CONDUCTING ANY WORK.
- 7) ANY WORK WITHIN THE ROADWAY OR ADJACENT TO THE ROADWAY CAUSING AN INTERFERENCE TO VEHICULAR TRAFFIC MUST CONFORM TO THE REQUIREMENTS SET FORTH BY THE UNIFORM MANUAL OF TRAFFIC CONTROL DEVICES OF THE STATE OF LOUISIANA. THE CONTRACTOR MUST FURNISH ALL NECESSARY TRAFFIC SIGNS AND/OR BARRICADES AND MAINTAIN THEM DURING CONSTRUCTION ACTIVITY. THE ROADWAY MAY BE CLOSED TO VEHICULAR TRAFFIC. RESIDENTS ABUTTING THE WORK AREA, AND AN ADDITIONAL 6 HOUSES BEYOND THE WORK AREA, MUST BE NOTIFIED OF ANY ROAD CLOSURES.

SPECIFIC NOTES: #

- 1) WHERE NEW CONCRETE ABUTTS EXISTING ROAD, STRIP ANY EXISTING JOINT MATERIAL AND DOWEL INTO EXISTING PAVEMENT W/ 24" L No. 5 SMOOTH ROD @ 24" O.C. DRILL 1" Ø HOLE, FILL WITH GROUT AND INSERT DOWEL IN A MANNER AS TO ENSURE THAT NO VOIDS EXIST.
- 2) WHERE NEW CONCRETE ABUTTS EXISTING DRIVEWAY OR SIDEWALK PROVIDE COLD JOINT.
- 3) ELEVATION OF NEW CONCRETE AT CROWN AND EDGE OF ROAD SHALL MATCH THE EXISTING CONCRETE ELEVATIONS AND ACCOMMODATE EXISTING DRAINAGE PATTERN.
- 4) TRUNCATED DOME DETECTABLE WARNING SYSTEM MINIMUM 24"x48" SHALL BE PROVIDED EVERYWHERE SIDEWALKS TRANSITION TO STREETS.
- 5) EXCAVATE AND DISPOSE OF EXISTING CONCRETE 15" Ø PIPE. PROVIDE NEW 18"x11" CONCRETE ARCH TYPE DRAIN PIPE WITH INVERTS MATCHING EXISTING ELEVATION. PROVIDE A MINIMUM PIPE BEDDING OF 6" THICK, GRANULAR FILL. BACKFILL NEW CULVERT WITH SIMILAR MATERIAL IN A MANNER TO MINIMIZE EROSION AND PROVIDE COMPACTED BASE COURSE FOR NEW SIDEWALK ABOVE.
- 6) DEMO AND REMOVE PORTION OF EXISTING SIDEWALK AS SHOWN. INSTALL NEW 4" THICK SIDEWALK AS SHOWN. PROVIDE 3/4" DEEP SCORE JOINT WITH SIDEWALK TOOL @ 5' O.C. ELEVATION ON NEW SIDEWALK SHALL MATCH THE ADJOINING SIDEWALK ELEVATION AND SLOPE UNIFORMLY TO ADJACENT STREET ELEVATION NOT TO EXCEED 12:1 SLOPE.

SCOPE OF WORK  
DEMOLITION, REMOVAL AND REPLACEMENT OF EXISTING CONCRETE STREET, SIDEWALKS AND CULVERTS TO IMPROVE SAFETY AND FUNCTIONALITY OF THE STREETS.

