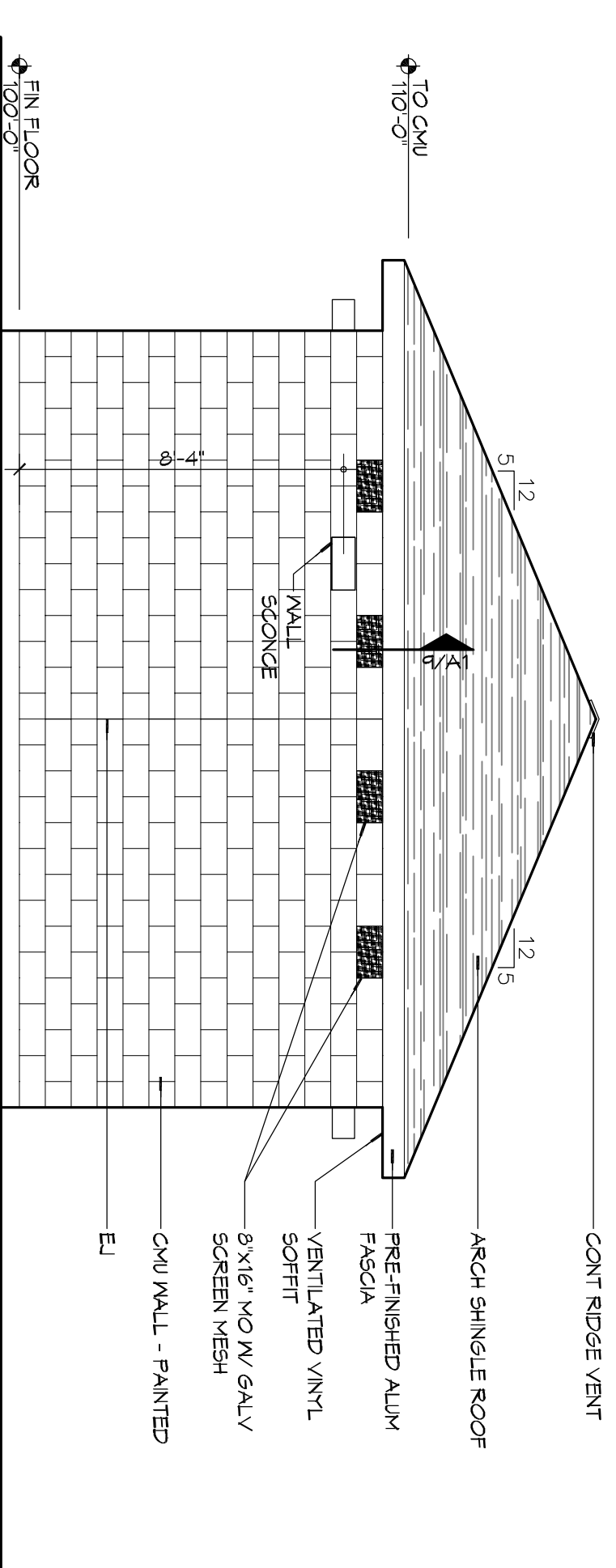
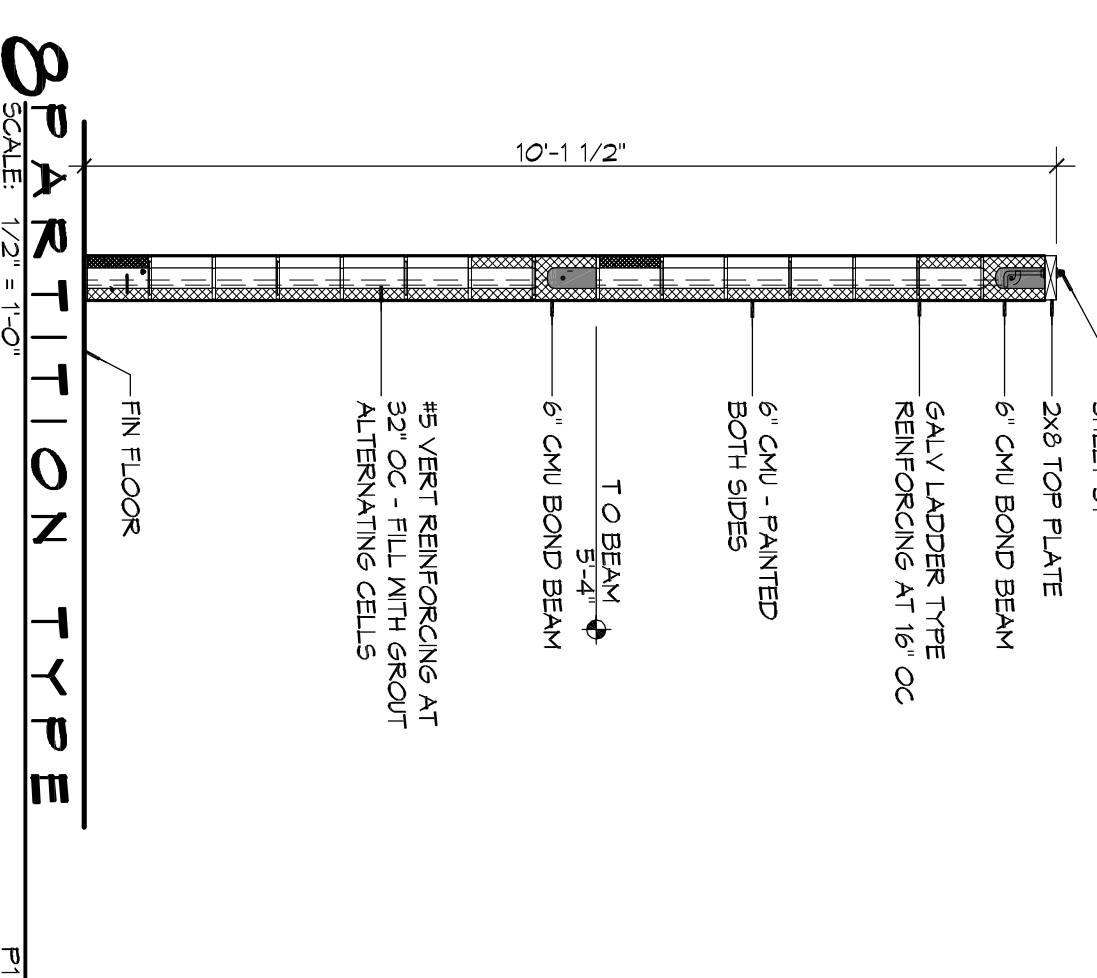


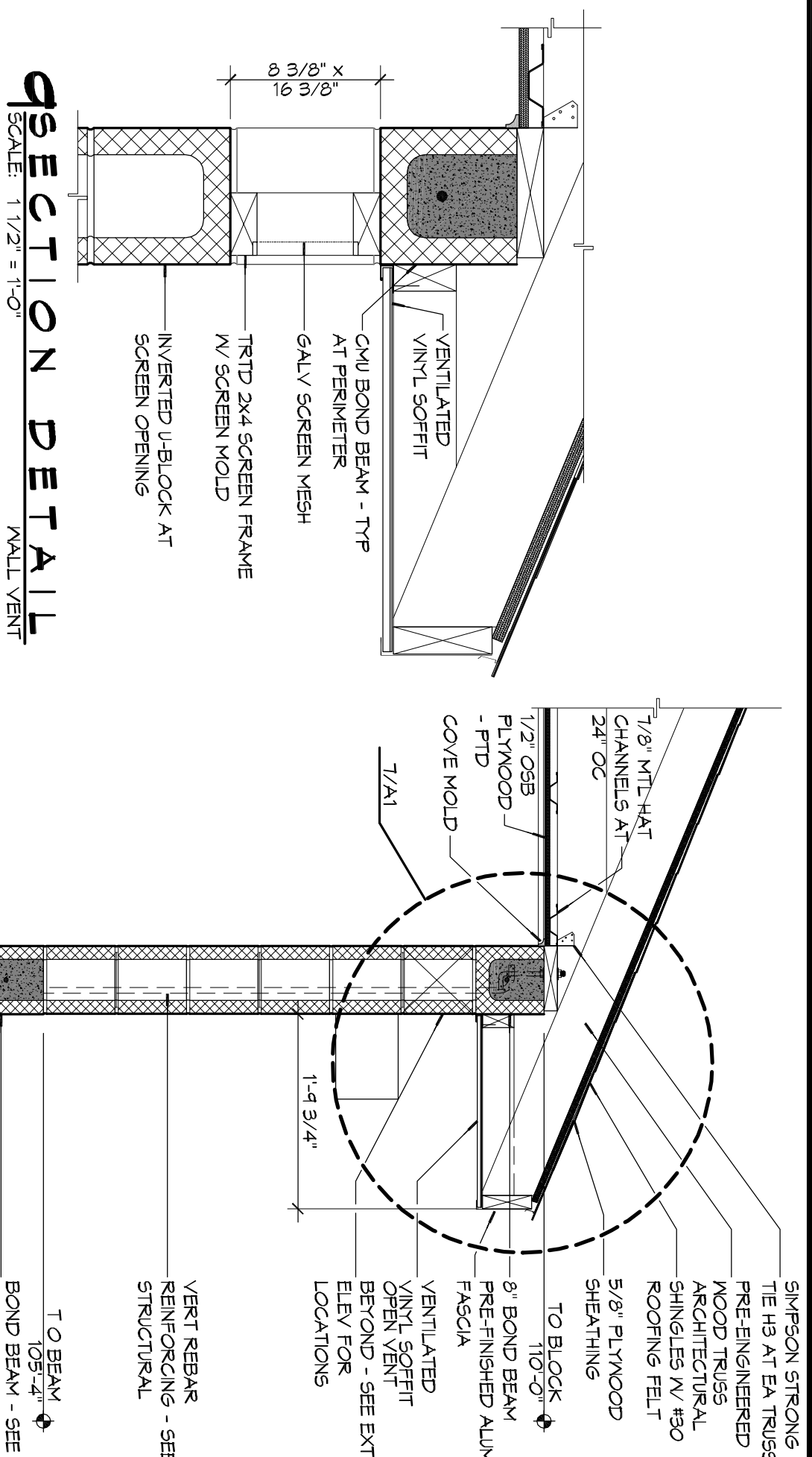
EXTERIOR ELEVATION
SCALE: 1/4" = 1'-0"



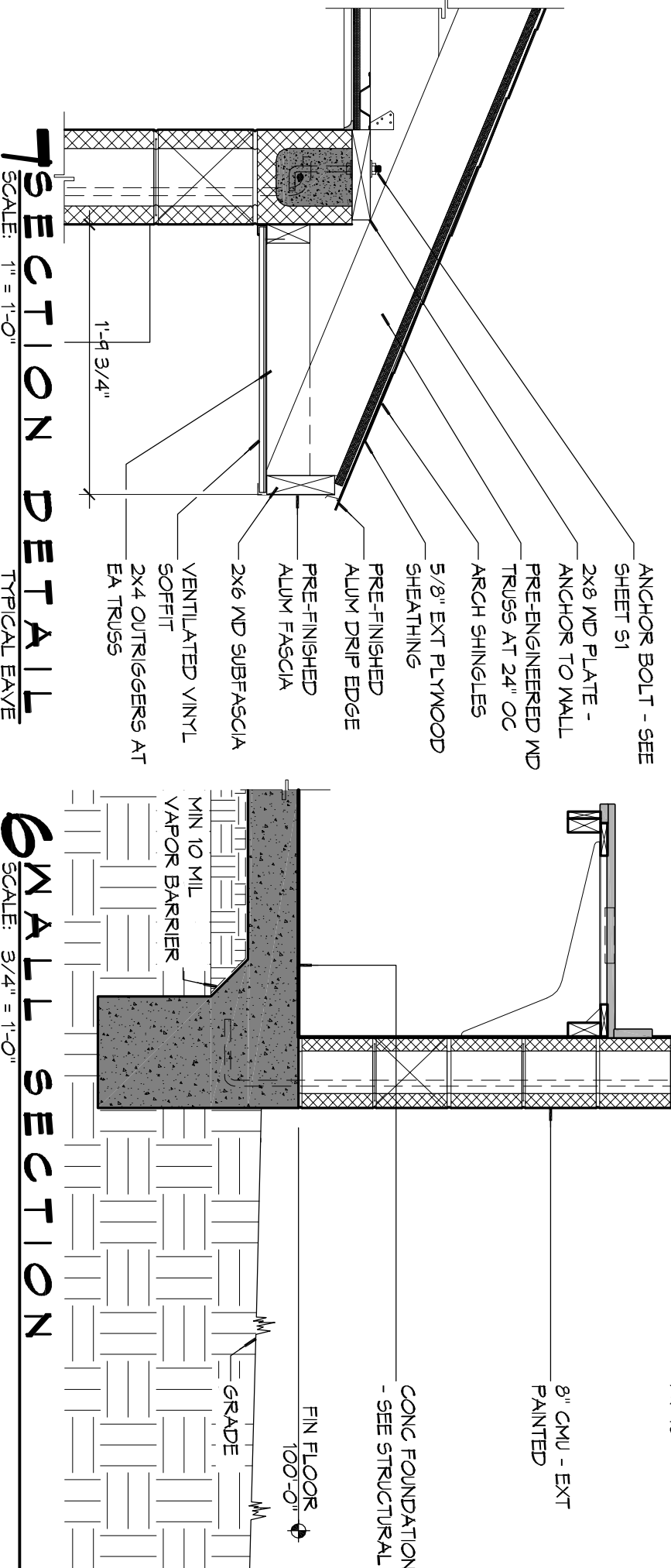
EXTERIOR ELEVATION
SCALE: 1/4" = 1'-0"



PARTITION TYPE
SCALE: 1/2" = 1'-0"



SECTION DETAIL
SCALE: 1 1/2" = 1'-0"



SECTION DETAIL
SCALE: 1 1/2" = 1'-0"

SMALL SECTION
SCALE: 3/4" = 1'-0"

- GENERAL NOTES**
- PROVIDE 8" WIDE (MIN) LANDING, LEVEL WITH FINISHED FLOOR, OUTSIDE EAST DOORS. SEE SITE PAVING PLAN. THRESHOLDS SHALL BE NOT MORE THAN 1/2" IN HEIGHT AND SHALL BE BEVELLED IF MORE THAN 1/4" AND DIMENSIONS FROM TO CONSTRUCTION. BUILDING LOCATIONS, MATERIALS SHALL BE NEW AND U.L. LISTED.
 - NO WORK SHALL BE CONCEALED UNTIL APPROVED BY LOCAL INSPECTORS.
 - CONSTRUCTION SHALL COMPLY WITH ALL PARISH, STATE, AND LOCAL CODES.
 - CONTRACTOR SHALL GUARANTEE ALL WORK FOR ONE CALENDAR YEAR.
 - CONTRACTOR SHALL FINISH WATER, SEWER, AND POWER FROM EXISTING SOURCES.
 - EXTERIOR CALLINGS SHALL BE DON CORNING 780 SILICONE (OR APPROVED EQUAL) INSTALLED IN ACCORDANCE WITH MFR. RECOMMENDATION WITH ARCH/OOWNER TO SELECT COLOR. INTERIOR CALLINGS TO EQUAL TO DAVE PAINTABLE LATEX WITH SILICONE.
 - PAIN GRABE SHALL BE SHERWIN WILLIAMS OR EQUIVALENT. ALL WORK TO RECEIVE THREE (3) COATS (ONE PRIMER, TWO FINISH). COLOR TO BE SELECTED BY OWNER/ARCHITECT.
 - PROVIDE CLEANUP ON A REGULAR BASIS. NO DEBRIS/TRASH SHALL BE STORED IN THE BUILDING.
 - FLOOR SURFACES TO NON-SLIP W/ LIGHT GROOM FINISH.
 - LOCKS ON DOORS IN VIEW OF EGRESS SHALL NOT REQUIRE THE USE OF KEYS OR SPECIAL KNOWLEDGE OR SPECIAL DEVICE TO OPEN THE DIRECTION OF EGRESS. ALL DOORS SHALL HAVE LEVER TYPE HANDLES. INTERIOR WALLS AND CEILINGS SHALL HAVE A FLAME SPREAD OF 0-200 AND A SMOKE DEVELOPED RATING OF 0-450.

ACCESSORY SCHEDULE

| MK | DESCRIPTION | MFR | MODEL # |
|-----|-----------------------------|----------------------------------|--------------------------------|
| 6B1 | 36" SS GRAB BAR | BRADLEY | 812 OR APPROVED EQUAL |
| 6B2 | 42" SS GRAB BAR | BRADLEY | 812 OR APPROVED EQUAL |
| M1 | CHANNEL FRAME MIRROR | BRADLEY | 781 OR APPROVED EQUAL |
| HD | ELECTRIC HAND DRYER | SEE SHEET P1 FOR MFR AND MODEL # | |
| TP | TOILET PARTITIONS AND DOORS | SEE SPECIFICATIONS | |
| TP1 | TOILET PAPER DISPENSER | BOBRICK | B-2888 OR APPROVED EQUAL |
| G1 | PLASTIC TRASH GRONNET | DD16 | TY-1-ELASTIC OR APPROVED EQUAL |

LEGEND

| | |
|-----------|-------------------------------|
| [Pattern] | CMU WALL |
| [Pattern] | ONE-HOUR FIRE-RATED PARTITION |

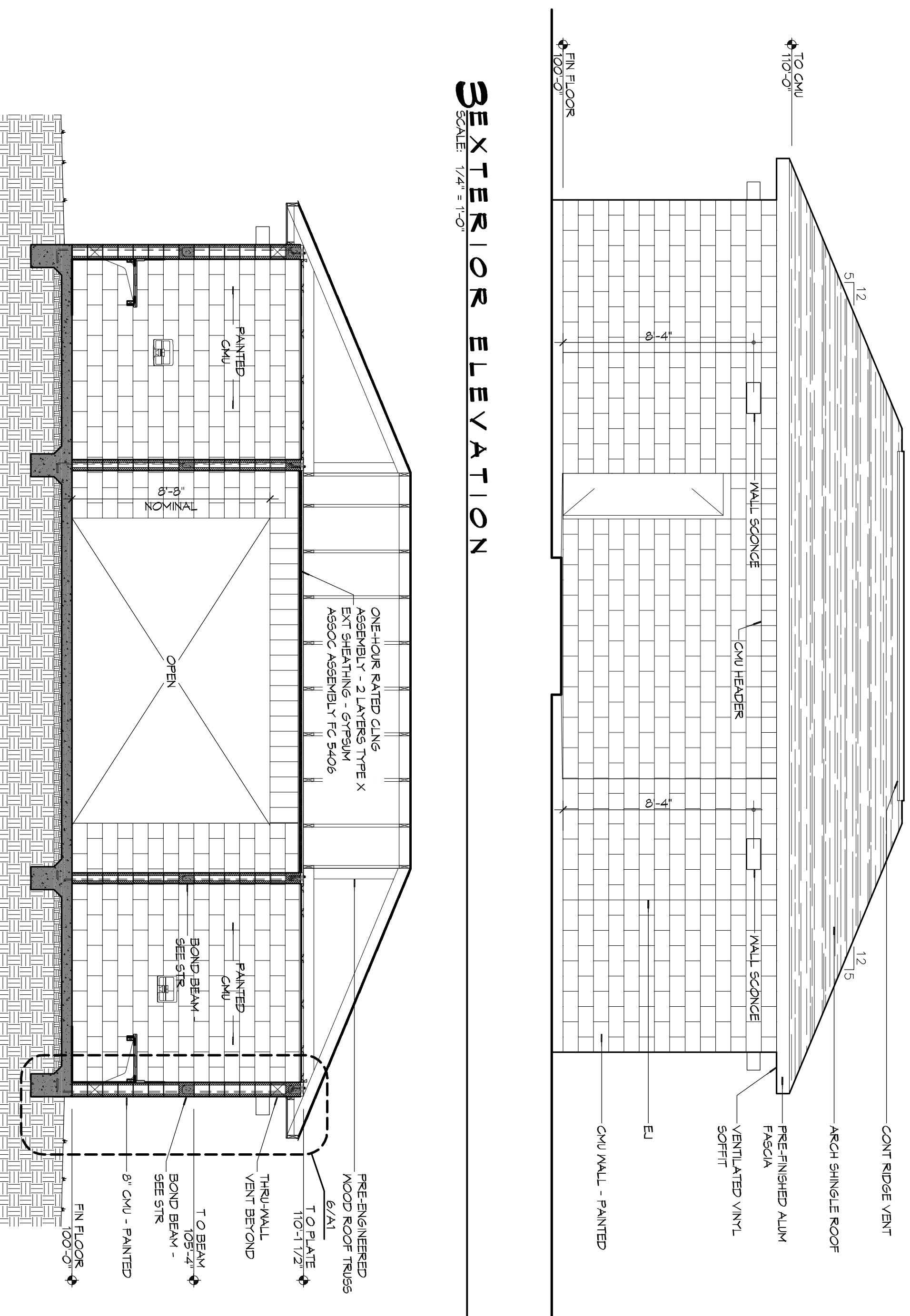
REVISIONS

| # | DESCRIPTION | DATE |
|---|-------------|------|
| | | |

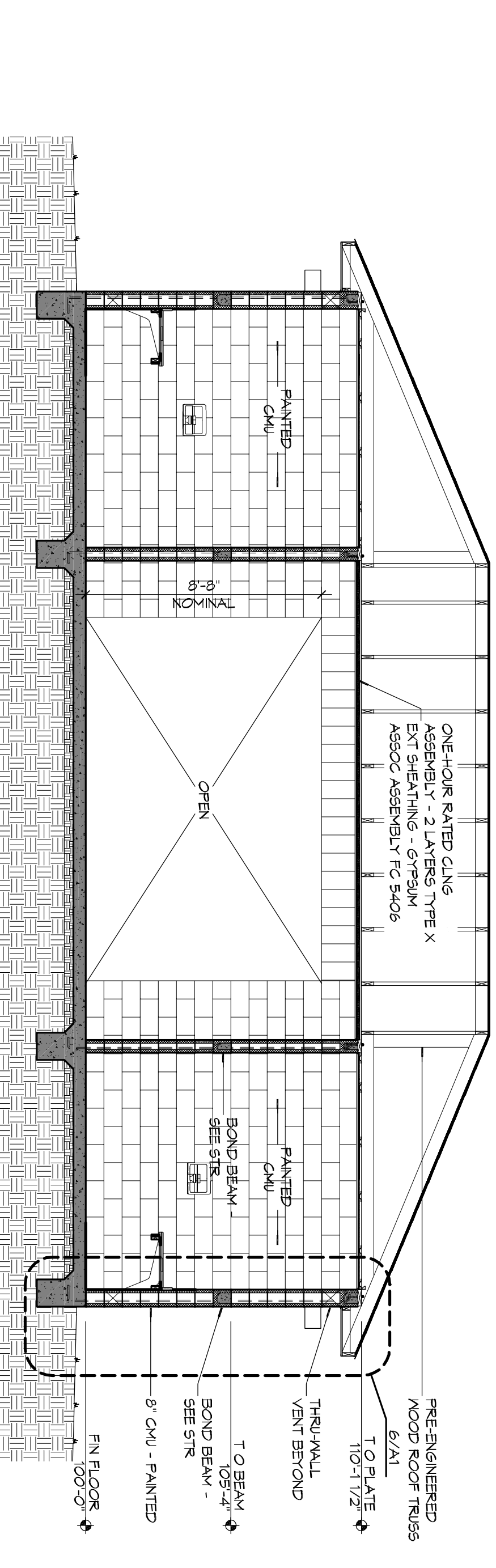
DAMMON ENGINEERING, INC.
Architects & Engineers

Chief Architect: Kevin J. Kinchen, NCARB
Chief Engineer: Brian Misch, PE
554 Old Spanish Trail
Slidell, LA 70458

www.dammoneengineering.com
info@dammoneengineering.com
PH: 985.649.5832
F: 985.641.5950

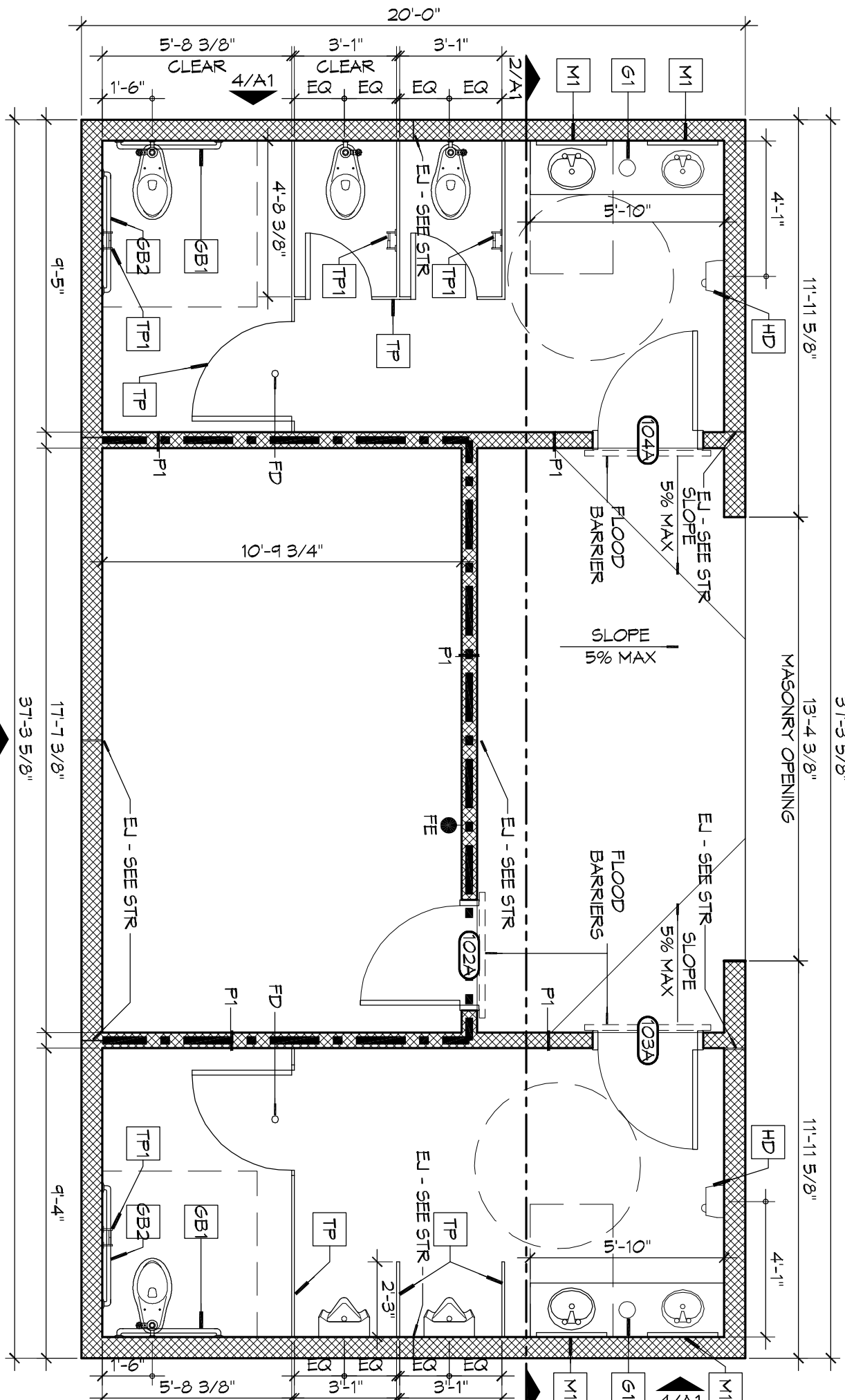


EXTERIOR ELEVATION
SCALE: 1/4" = 1'-0"



EXTERIOR ELEVATION
SCALE: 1/4" = 1'-0"

BUILDING SECTION
SCALE: 1/4" = 1'-0"



ARCHITECTURAL FLOOR PLAN
SCALE: 1/4" = 1'-0"

AS-BUILTS

2602 2nd STREET
SLIDELL, LOUISIANA, 70458

JOB No: 2170 DATE: 4/2/2014

DRAWN BY: [Signature] CHECKED BY: CKD, KKK

A1

2602 2nd STREET
SLIDELL, LOUISIANA, 70458

JOB No: 2170 DATE: 4/2/2014

DRAWN BY: [Signature] CHECKED BY: CKD, KKK