

LIFE-SAFETY INFORMATION

| | |
|---|---------------------------|
| APPLICABLE CODES | |
| NFPA 101 LIFE-SAFETY CODE 2012 | |
| OCCUPANCY TYPE(S) AND CHAPTER(S) | |
| STORAGE (CHAPTER 42), BUSINESS (CHAPTER 38) | |
| MULTIPLE, MIXED, OR SEPARATE OCCUPANCY (REFERENCE CHAPTER 6) | |
| N/A | |
| OCCUPANT LOAD FACTOR | (REFERENCE TABLE 7.3.1.2) |
| 747 SF / 100 SF PER OCCUPANT = | 8 OCCUPANTS |
| CLASSIFICATION OF HAZARD OF CONTENTS | |
| (REFERENCE: OCCUPANCY CHAPTER AND 6.2.2. SPECIFY LOW, ORDINARY, OR HIGH) | |
| CONSTRUCTION TYPE(S) (REFERENCE: CHAPTERS, TABLE A.8.2.1.2 AND COMMENTARY TABLE 8.1 IN HANDBOOK) | |
| V(1000) | |
| MINIMUM EXIT SEPARATION DISTANCE FOR REMOTELY LOCATED EXITS | |
| (REFERENCE: SECTION 7.5; SPECIFY 1/2 OR 1/3 DIAGONAL DISTANCE OF AREA SERVED) | |
| 1/2 DIAGONAL = | N/A |
| MAXIMUM DEAD-END CORRIDORS (REFERENCE: OCCUPANCY CHAPTER AND TABLE A.7.6) | |
| NR | |
| MAXIMUM COMMON PATH OF TRAVEL DISTANCE (REFERENCE: OCCUPANCY CHAPTER AND TABLE A.7.6) | |
| NR | |
| MAXIMUM TRAVEL DISTANCE TO EXITS (REFERENCE: OCCUPANCY CHAPTER AND TABLE A.7.6) | |
| NR | |
| *MAIN ENTRANCE MUST BE SIGNED TO ACCOMMODATE 1/2 OCCUPANT LOAD OF BUILDING | |
| EXTINGUISHMENT REQUIREMENTS SPRINKLER (NOT REQUIRED) | |
| DETECTION, ALARM, AND COMMUNICATION SYSTEMS NO | |
| ALLOWABLE HEIGHT AND BUILDING AREA PER IBC EQUIVALENT CONSTRUCTION TYPE | |

BUILDING CODE INFORMATION

| | |
|---|---|
| APPLICABLE CODES | |
| IBC 2012 | |
| BUSINESS GROUP B (IBC 2012 CHAPTER 13) | |
| LOW-HAZARD STORAGE S-2 | |
| OCCUPANT LOAD CALCULATIONS (TABLE 1004.1.2) | |
| ACCESSORY STORAGE AREA = 190 sq. ft. | 100 SF PER OCCUPANT (GROSS) 8 OCCUPANTS |
| CONSTRUCTION TYPE(S) (TABLE 503) | |
| VB (SECTION 503) | |
| ALLOWABLE HEIGHT AND BUILDING AREA LIMITED BY TYPE OF CONSTRUCTION | |
| MAXIMUM HEIGHT IN STORIES (SECTION 503 & 504, TABLE 503) | 2 |
| MAXIMUM AREA IN SQUARE FEET (SECTION 503, 506 & 507, TABLE 503) | 19,500 |

WIND SPEED DESIGN REQUIREMENTS

THIS BUILDING SHALL BE DESIGNED WITH IBC SEC 1609 AS A FULLY ENCLOSED BLDG USING THE FOLLOWING INFORMATION:

WIND DESIGN DATA:

DETERMINATION OF WIND LOADS SHALL BE IN ACCORDANCE WITH IBC SEC 1609.3 (A), (B), OR (C) DEPENDING ON THE RISK CATEGORY

BASIC WIND SPEED (3 SECOND GUST) = 132 MPH (IBC FIG 1609C)

RISK FACTOR: CATEGORY I BLDG SURFACE ROUGHNESS = C

TOPOGRAPHIC FACTOR = 1 EXPOSURE = C

DESIGN WIND PRESSURE (ASCE 7-10 TABLE 28.6-1): 34.7 PSF

INTERNAL PRESSURE COEFFICIENT (ASCE 7-10 TABLE 26.11-1): ± 0.18

LIVE LOADS (IBC SEC 1607)

STORAGE, LIGHT (IBC TABLE 1607.1): 125 PSF

ROOF LIVE LOADS (IBC TABLE 1607.1): 20 PSF UNIFORM, 300 LB CONCENTRATED

SNOW LOADS (IBC TABLE 1608):

GROUND SNOW LOAD (IBC FIG 1608.2): 5 PSF

FLOOD ZONE INFORMATION

BASED ON THE SURVEY OF THIS PROPERTY BY J.V. BURKES AND ASSOCIATES, INC. THIS PROPERTY IS IN A SPECIAL FLOOD HAZARD AREA. F.I.R.M. COMMUNITY MAP NO 220204 0010 C; REVISED 4/21/99

| | | | |
|-------------|----|----------------------|----------|
| FLOOD ZONE: | AE | BASE FLOOD ELEVATION | 9.0 NGVD |
|-------------|----|----------------------|----------|

ELEVATIONS REFER TO NGVD 1929 DATUM

GRAPHIC SYMBOLS

| | | | |
|-------------------------------|-------------------------------------|--------------|--|
| CEILING HEIGHT | FINISHED CEILING DESIGNATION SYMBOL | DRAWING NO | DRAWING TITLE |
| CEILING MATERIAL | DETAIL TAG | 1 PLAN | SCALE: SCALE |
| AREA OF DETAIL TO BE ENLARGED | ELEVATION TAG | TRUE NORTH | DRAWING SCALE |
| SHEET NUMBER | SECTION TAG | PLAN NORTH | DRAWING SUBTITLE |
| DETAIL NUMBER | COLUMN GRID IDENTIFIER | 1 PLAN | DRAWING TITLE |
| DETAIL NUMBER | REVISION TAG & CLOUD | SCALE: SCALE | DRAWING SUBTITLE |
| | | ROOM NAME | ROOM TAG |
| | | ROOM NUMBER | ENTRY 101 |
| | | LEVEL X | PARTITION TYPE TAG |
| | | XXX | ELEVATION TAG |
| | | XXX | WINDOW - LOUVER OPENING DESIGNATION, REFERENCE WINDOW SCHEDULE |
| | | X | DOOR OPENING DESIGNATION, REFERENCE DOOR SCHEDULE |
| | | X | KEY NOTE (SHEET SPECIFIC) |

CITY OF SLIDELL

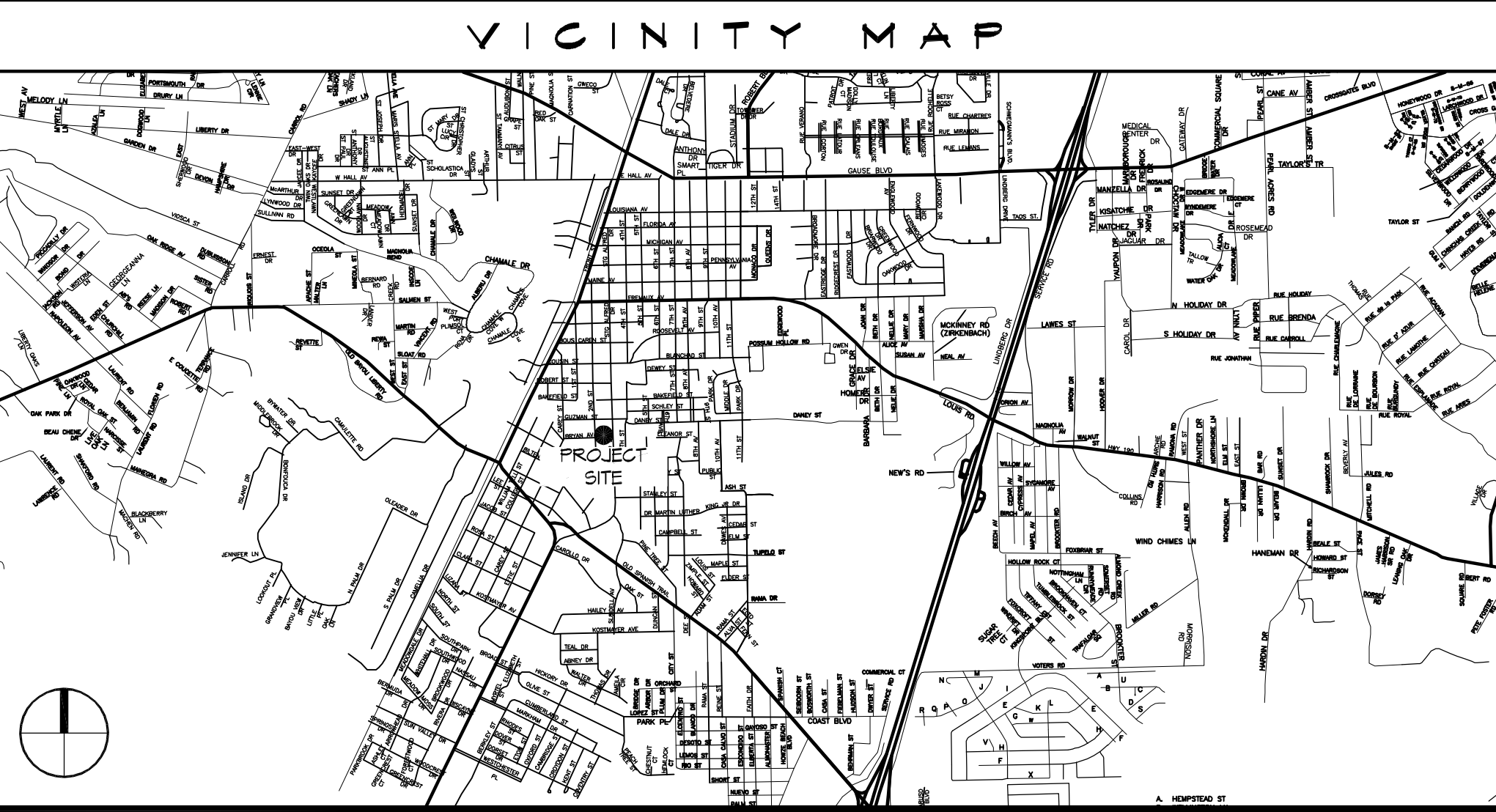


THIRD STREET RESTROOM / VETERANS PARK

**MAYOR
FREDDY DRENNAN**

CITY COUNCIL

| | |
|---------------------------|--------------------|
| LONDON CUSIMANO | COUNCILOR-AT-LARGE |
| KIM BARONET HARBISON | COUNCILOR-AT-LARGE |
| GLENN PICHON | DISTRICT "A" |
| SAMUEL W. ABNEY | DISTRICT "B" |
| NARREN CROCKETT | DISTRICT "C" |
| VAL VANNEY, JR. | DISTRICT "D" |
| SALVATORE A. "SAM" CARUSO | DISTRICT "E" |
| LAY E. NENCOMB | DISTRICT "F" |
| BILL BORCHERT JR. | DISTRICT "G" |

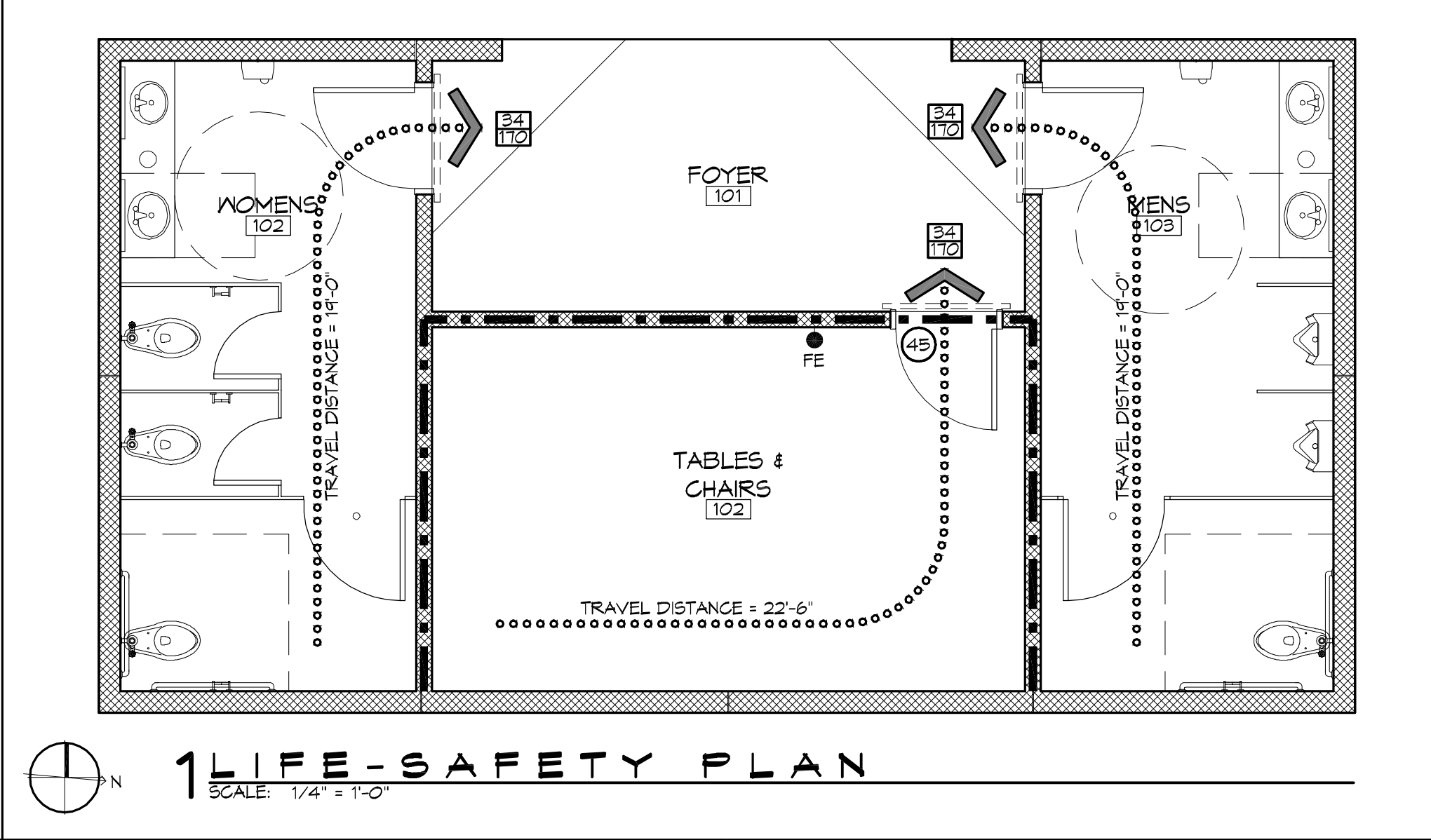


LIFE-SAFETY LEGEND

| SYMBOL | DESCRIPTION |
|--------|---------------------------------------|
| ➤ | EXITS |
| 45 | DOOR FIRE RATING (MINUTES) |
| 54/100 | DOOR WIDTH/EGRESS CAPACITY |
| ⊙ | EXIT LIGHT |
| FE | FIRE EXTINGUISHER AND CABINET |
| FE | FIRE EXTINGUISHER W/ WALL MTD BRACKET |
| ----- | COMMON PATH OF TRAVEL |
| | TRAVEL DISTANCE |
| ● | DECISION POINT |
| ----- | SMOKE PARTITION |
| ----- | ONE-HOUR FIRE RATED PARTITION |
| ----- | TWO-HOUR FIRE RATED PARTITION |
| ----- | TWO-HOUR FIRE/SMOKE PARTITION |
| ----- | FOUR-HOUR RATED PARTITION |

| # | DESCRIPTION | DATE |
|---|-------------|------|
| | | |
| | | |
| | | |
| | | |

SEAL:



SHEET INDEX

| SHEET # | SHEET TITLE |
|---------|--|
| G1 | GENERAL INFORMATION SHEET |
| G2 | ADA INFORMATION |
| S1 | FOUNDATION PLAN |
| C1 | SITE PLAN, UTILITY PLAN, PAVING & DRAINAGE PLAN, LANDSCAPING |
| A1 | ARCHITECTURAL FLOOR PLAN, SECTIONS, EXTERIOR ELEVATIONS |
| A2 | ROOF PLAN & MILLWORK, DOOR & FIN SCHEDULE, DOOR DETAILS |
| E1 | ELECTRICAL PLANS |
| P1 | PLUMBING PLANS AND RISERS |

PROJECT STATISTICS

| | |
|----------------------|--------|
| SQUARE FOOTAGE | |
| NEW BUILDING | 747 SF |
| TOTAL ENCLOSED SPACE | 747 SF |

PROJECT LOCATION:
VETERANS PARK
2602 2nd STREET
SLIDELL, LA 70458

OWNER:
CITY OF SLIDELL
PLANNING DEPT.
250 BOUSCAREN ST., SUITE 203
SLIDELL, LA 70458
(985) 646-4320

GENERAL NOTES

- ALL MATERIALS AND WORK, INCIDENTAL TO THE CONSTRUCTION OF THIS PROJECT, SHALL CONFORM TO ALL GOVERNING CODES, AND REGULATIONS OF AGENCIES IN AUTHORITY.
- CONTRACTOR SHALL PROVIDE ALL PUBLIC PROTECTIONS NECESSARY AS REQUIRED BY LAW.
- THE DRAWINGS, SPECIFICATIONS AND ANY SUBSEQUENTLY ISSUED ADDENDA, AMENDMENTS OR SUCH CHANGE ORDERS APPROVED BY THE OWNER AND THE CONTRACTOR ARE PART OF THESE CONTRACT DOCUMENTS.
- DO NOT SCALE DRAWINGS. CONSULT WITH THE ARCHITECT REGARDING ANY ITEMS IN THE CONTRACT DOCUMENTS THAT REQUIRE CLARIFICATION.
- TRASH SHALL BE REMOVED FROM THE SITE NOT LESS THAN TWICE MONTHLY.
- THE GENERAL CONTRACTOR SHALL VERIFY EXISTING CONDITIONS PRIOR TO COMMENCING WORK AND REPORT ANY AND ALL DISCREPANCIES TO THE ARCHITECT.
- CONTRACTOR VEHICLES AND EQUIPMENT NECESSARY FOR CONSTRUCTION MAY BE PARKED ON THE SITE. OTHER VEHICLES PARKED ON THE SITE REQUIRE THE OWNER'S PERMISSION.
- NAMING A CERTAIN BRAND, MAKE OR MANUFACTURER IS TO DESIGNATE THE GENERAL STYLE, TYPE, CHARACTER AND QUALITY STANDARD OF THE PRODUCT DESIRED. SUBSTITUTION REQUESTS MUST BE SUBMITTED PRIOR TO BIDDING.
- ALL MATERIALS/EQUIPMENT SHALL BE INSTALLED PER MANUFACTURER'S RECOMMENDATIONS. WORK NOT CONSISTENT WITH MANUFACTURER'S RECOMMENDATIONS WILL BE REJECTED BY OWNER/ARCHITECT.

DAMMON ENGINEERING, INC.
Architects & Engineers

Chief Architect: Kevin S. Kinchen, NCARB
Chief Engineer: Brian Mischen, PE
554 Old Spanish Trail
Slidell, LA 70458
PH: 985.646.5832
F: 985.641.5990
www.dammonengineering.com
info@dammonengineering.com

| # | DESCRIPTION | DATE |
|---|-------------|------|
| | | |
| | | |
| | | |
| | | |

AS-BUILTS

PROJECT: VETERANS PARK RESTROOM

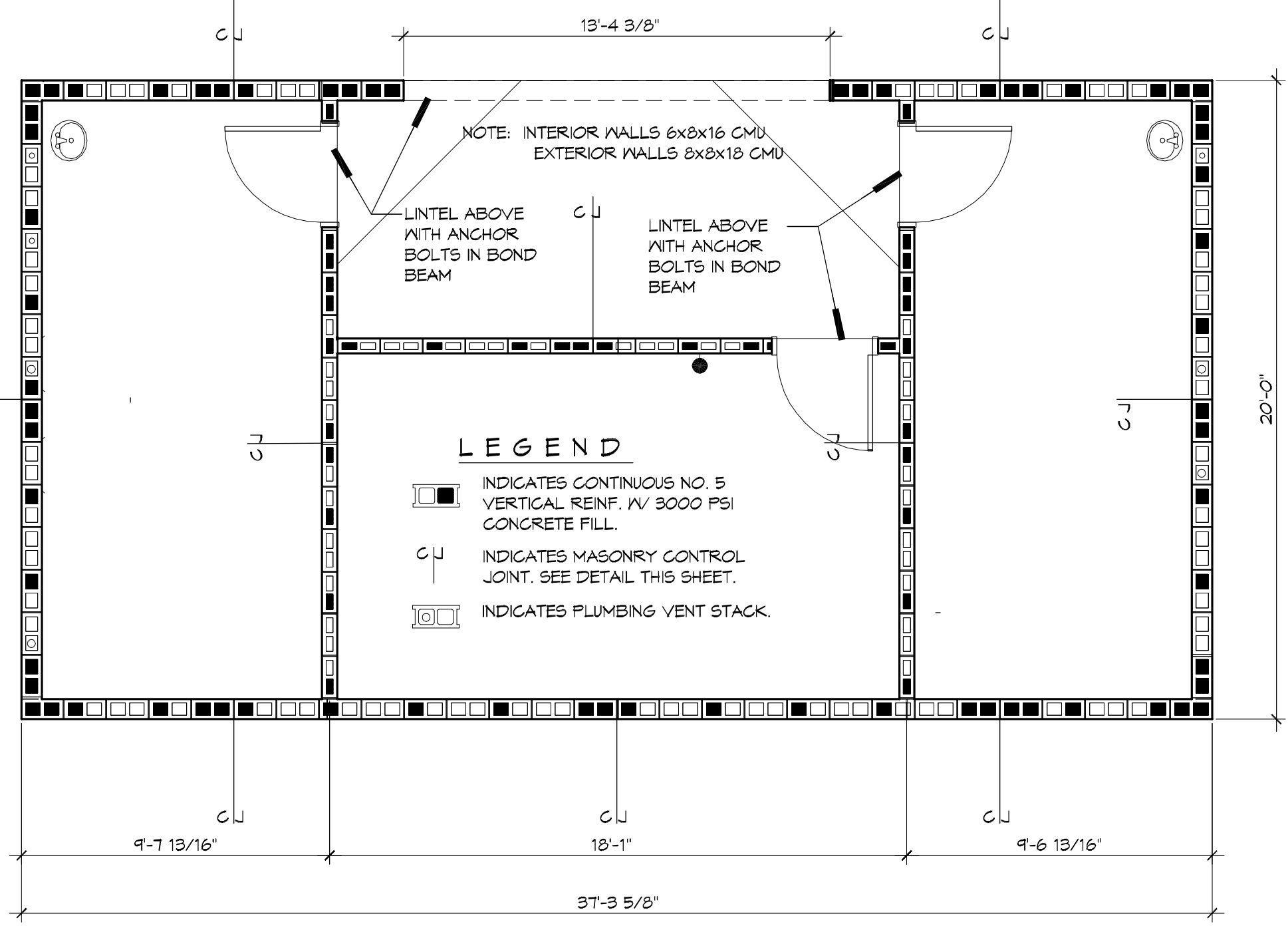
LOCATION: 2602 2nd STREET, SLIDELL, LOUISIANA, 70458

JOB NO.: 2170 **DATE:** 4/2/2014 **CHECKED BY:** CKD

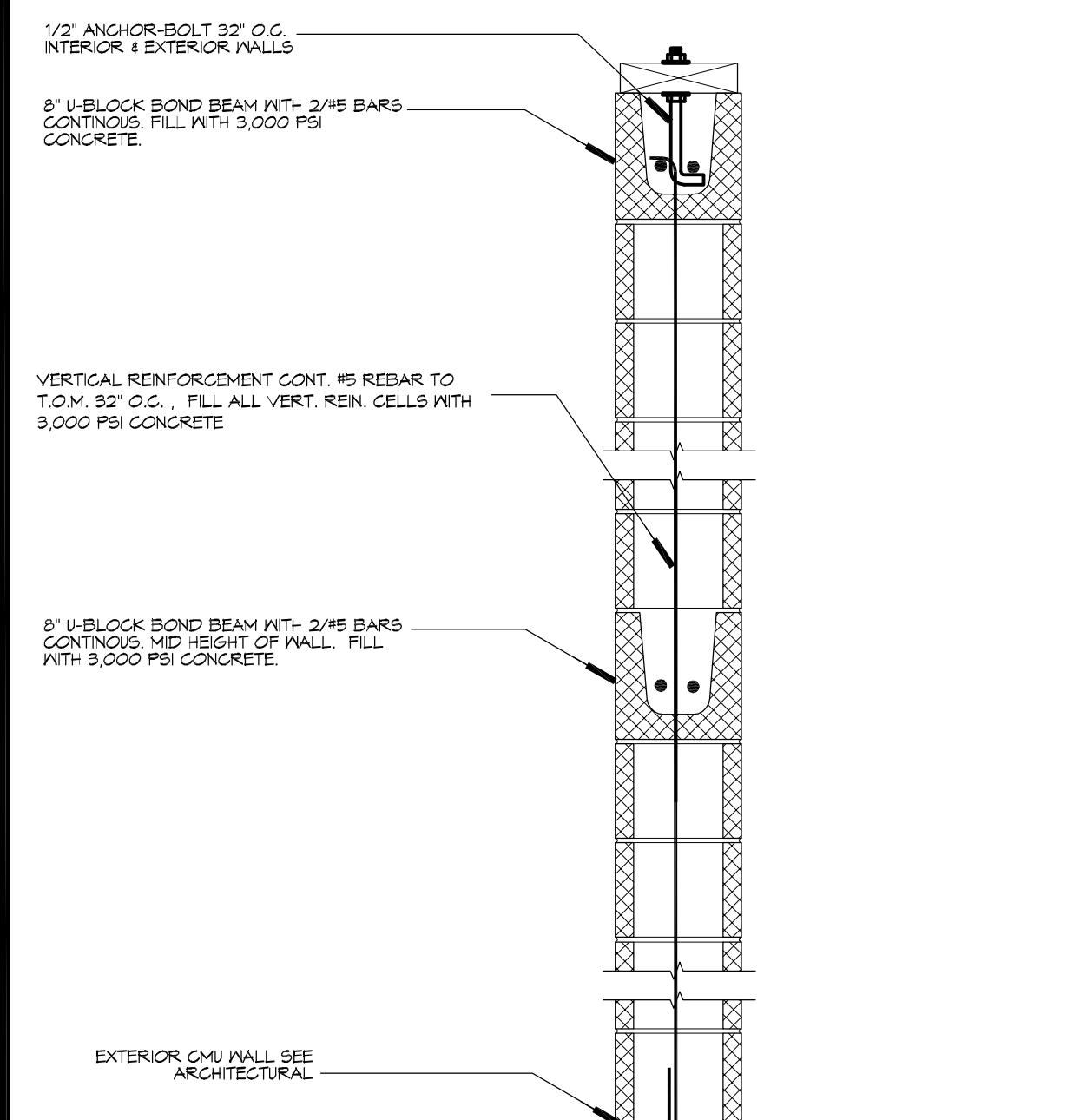
DRAWN BY: KJK

| | |
|-----------------|---------------------------|
| SHEET TITLE: | GENERAL INFORMATION SHEET |
| DRAWING NUMBER: | G1 |

SHEET No: 1 of 8

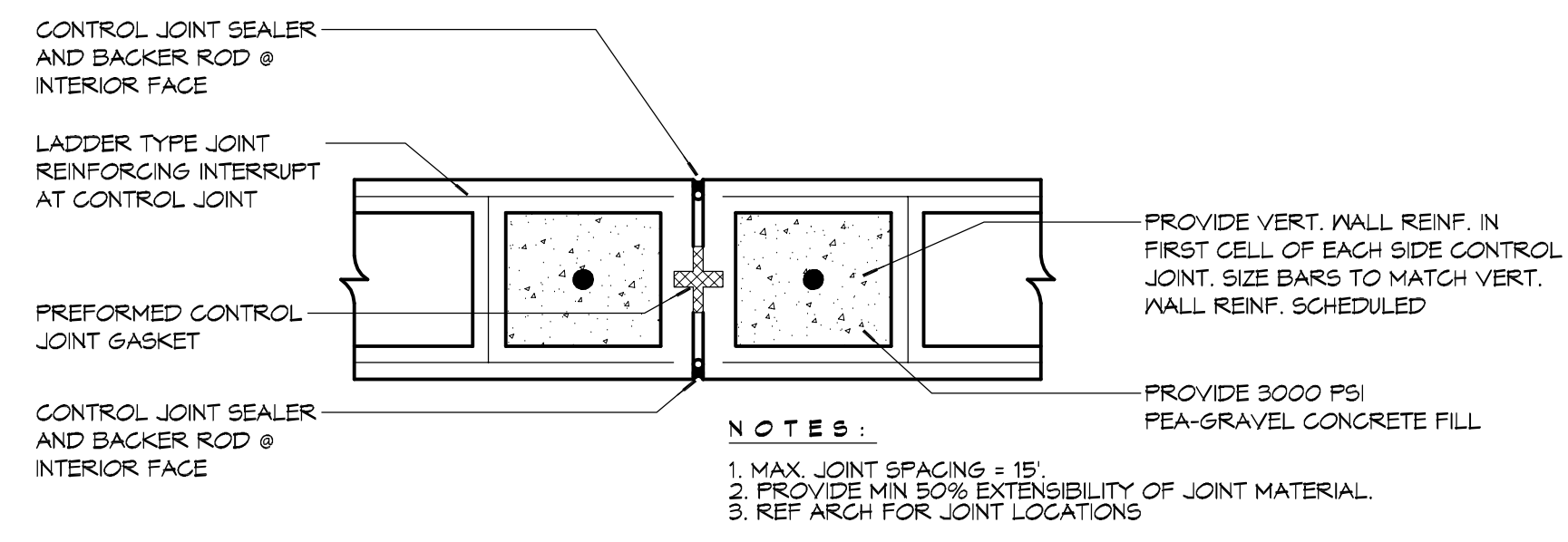
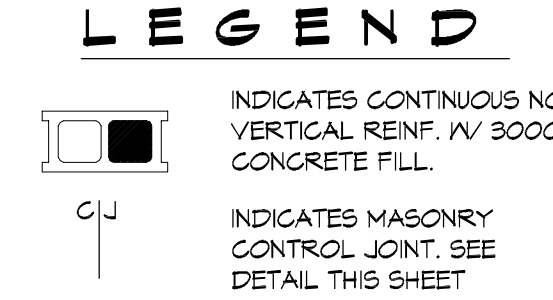


C PLAN
SCALE: 1/4" = 1'-0"
Masonry Reinforcing

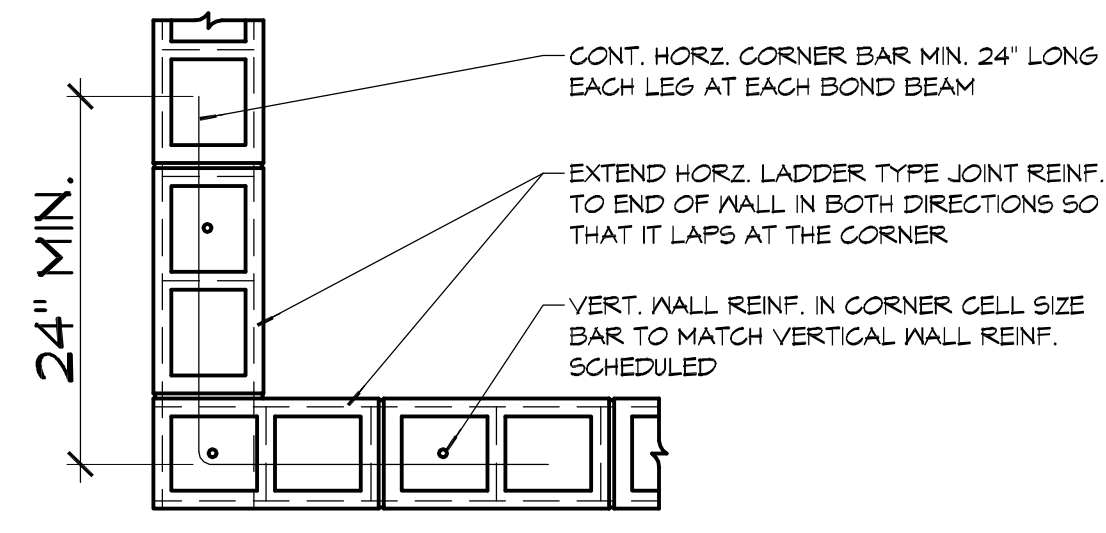


| WIDTH (W) | CLEAR SPAN | DEPTH (D) | HORIZ. REINF. |
|-------------------------|--------------|-----------|---------------|
| 8" TYP AT ALL CMU WALLS | UP TO 3'-4" | 8" | (1) #6 BOTTOM |
| | UP TO 6'-4" | 16" | (1) #6 T#5 |
| | UP TO 14'-0" | 24" | (2) #6 T#5 |

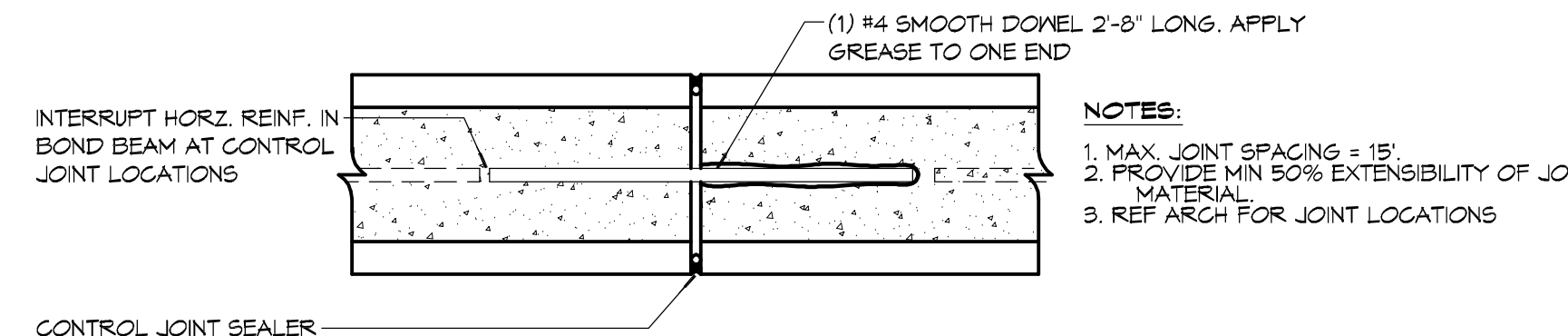
PROVIDE 3000 PSI PEA-GRAVEL CONCRETE FILL FOR ALL LINTELS.



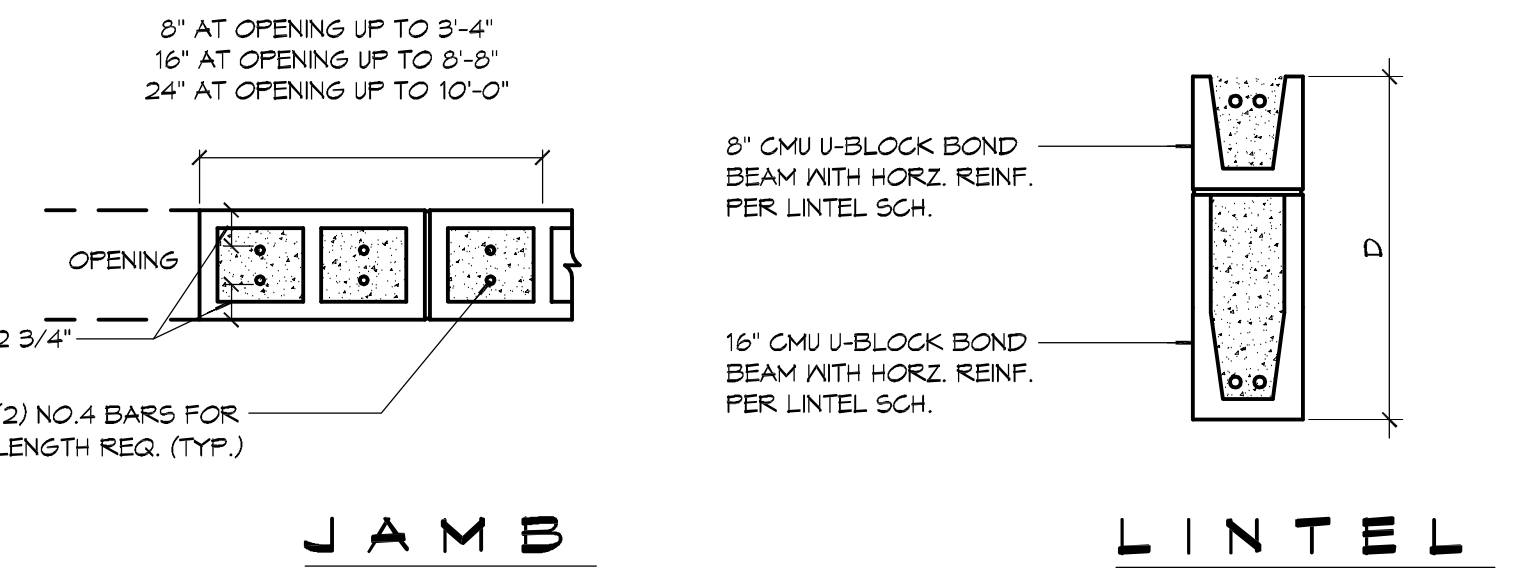
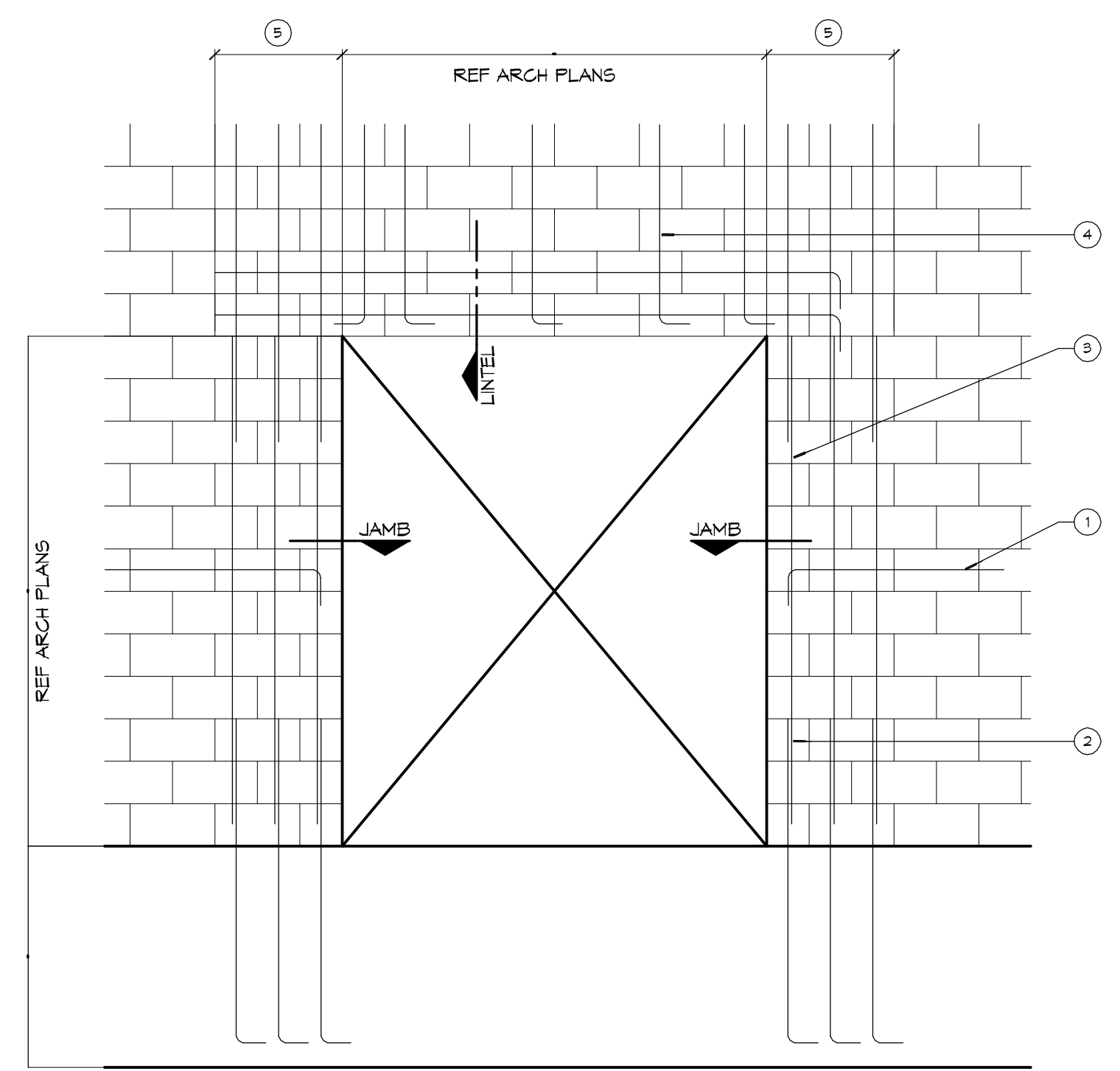
DETAIL
SCALE: NTS
Typical Expansion Joint



DETAIL
SCALE: NTS
Typical Reinforcing at Corner

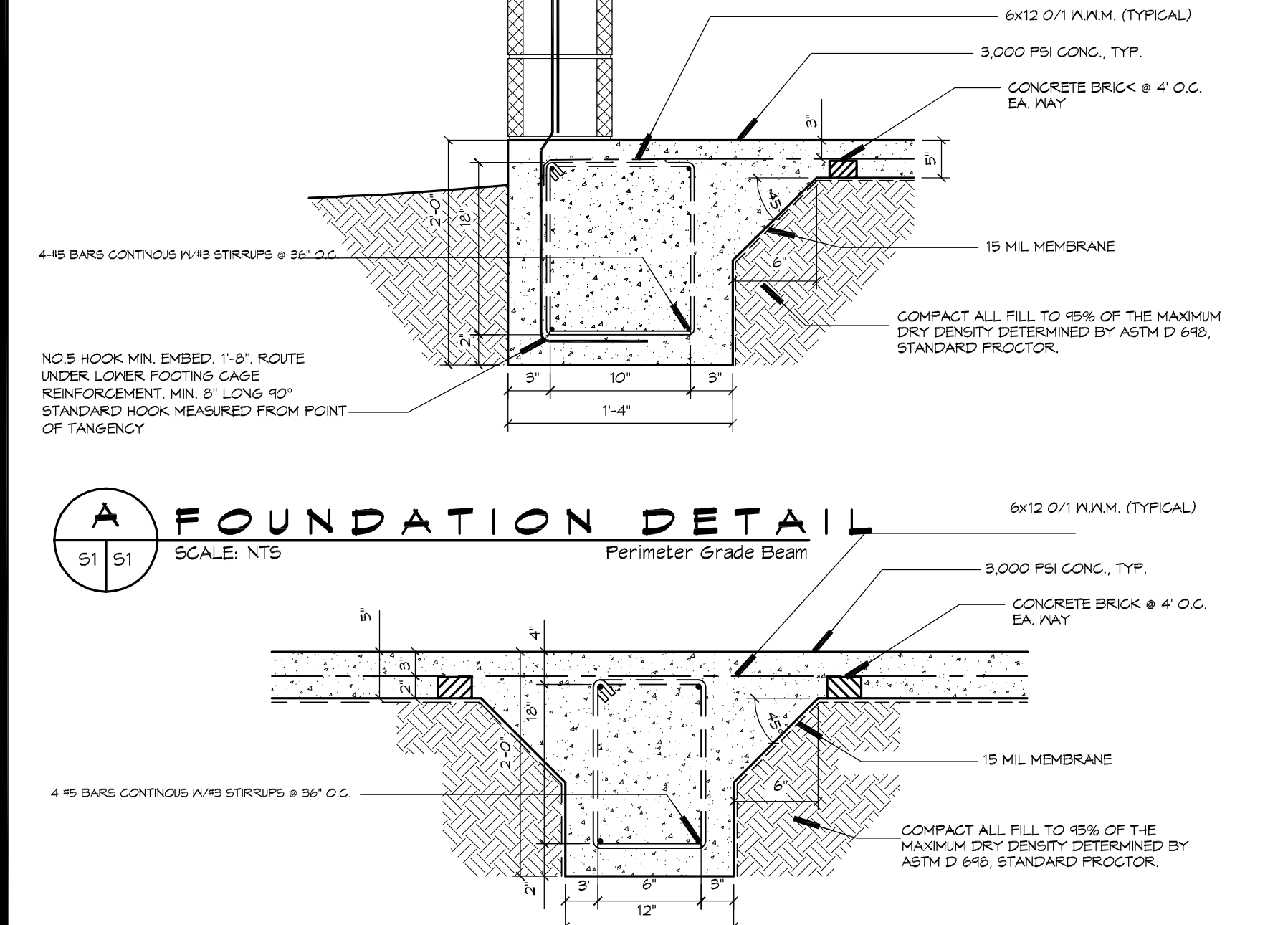


DETAIL
SCALE: NTS
Control Joint at Bond Beam



- NOTES:**
- WHERE HORIZ. REINFORCEMENT IS INTERRUPTED BY OPENING OR CONTROL JOINT PROVIDE STANDARD ACI HOOK WITH VERT. WALL REINF. AT END CELL.
 - SPLICES IN VERT. REINF. REF. WALL SECTIONS S-1 AND SLOPES AWAY FROM THE BUILDING SHOULD BE ASSURED.
 - ALL VERT. BARS AT DOOR JAMBS TO BE FULL HEIGHT.
 - CONTINUE VERT. WALL REINF. OVER OPENING, ANCHOR VERT. REINF. INTO LINTEL BEAM WITH STANDARD ACI HOOK.
 - EXTEND LINTEL A MIN. 2'-0" BEYOND FACE OF OPENING EACH SIDE FOR STRAIGHT LINTEL REINF. AND 1'-0" FOR LINTEL REINF. WITH STANDARD ACI HOOK.

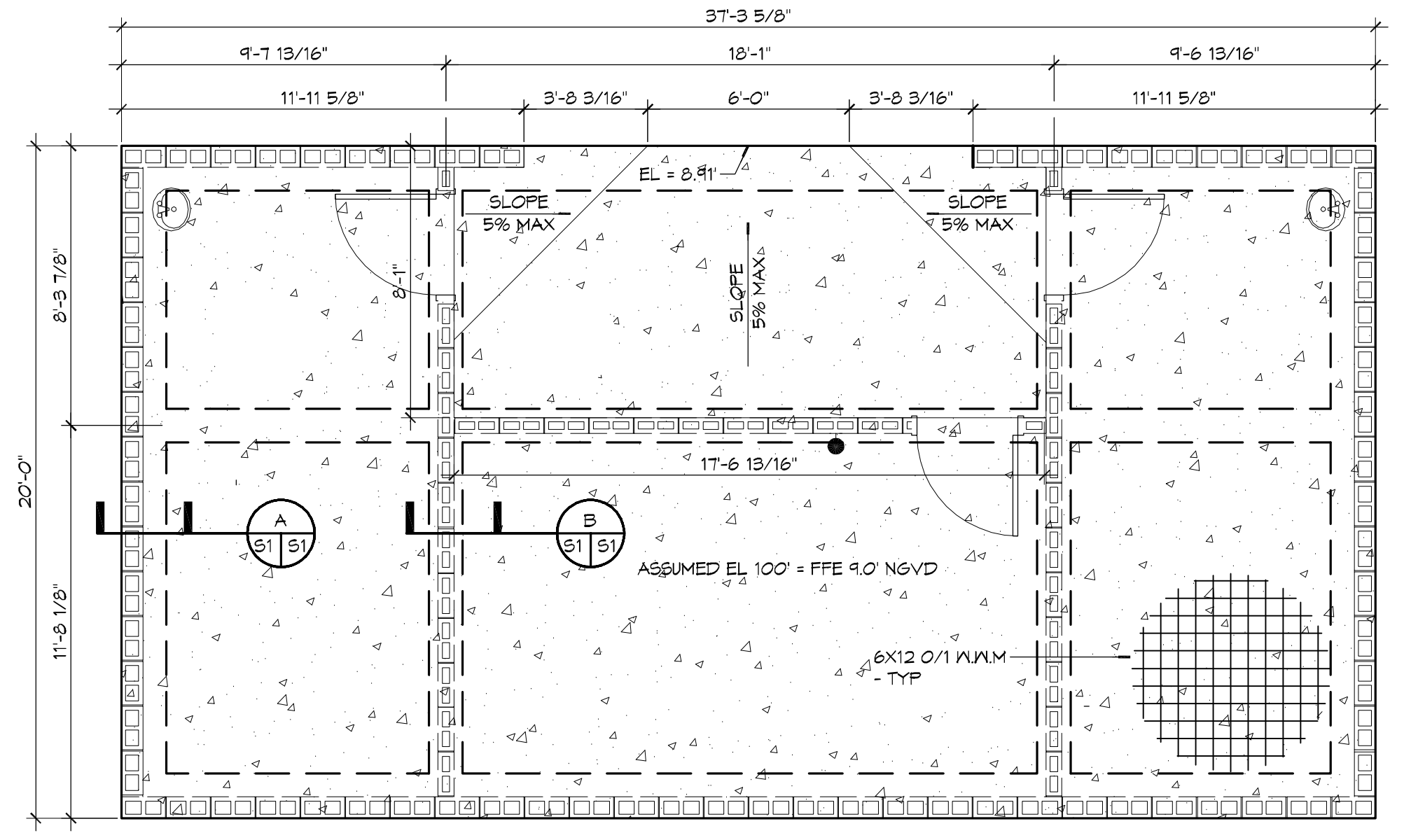
DETAIL
SCALE: NTS
Typical Masonry Wall Opening Diagram



A FOUNDATION DETAIL
SCALE: NTS
Perimeter Grade Beam



B FOUNDATION DETAIL
SCALE: NTS
Interior Grade Beam



1 FOUNDATION PLAN
SCALE: 1/4" = 1'-0"

- SITE PREP NOTES**
- REMOVE EXISTING SURFACE TO A DEPTH OF 2 FT. AND REPLACE WITH STRUCTURAL FILL. PROOF-ROLL WITH A RUBBER Tired VEHICLE WEIGHING 20 TONS.
 - PROVIDE AND MAINTAIN IMMEDIATE SITE DRAINAGE BEFORE, DURING AND AFTER CONSTRUCTION. PROVIDE GRADING, SPALES AND SUMP PUMPS AS MAY BE REQUIRED TO IMMEDIATELY DRAIN ALL RAIN WATER FROM THE CONSTRUCTION AREA. GOOD SURFACE DRAINAGE WITH POSITIVE COLLECTION AND RUNOFF FLATIRON FILMS. PROVIDE APPROPRIATE ACCESSORIES FOR A COMPLETE SYSTEM.
 - STRUCTURAL FILL SHALL BE INSTALLED IN 8" LIFTS. IT SHALL BE COMPACTED TO 95 PERCENT OF MAXIMUM DRY DENSITY AS DETERMINED BY ASTM D-698 STANDARD PROCEDURE.
 - TREAT SOIL BELOW FOR TERMITES.

- FOUNDATION NOTES**
- THE CONCRETE MIX SHALL HAVE A MINIMUM COMPRESSIVE STRENGTH OF 4,000 PSI AT 28 DAYS. CONCRETE MIX SHALL BE IN ACCORDANCE WITH ACI-308.
 - ALL CONVENTIONAL REINFORCING STEEL SHALL MEET ASTM-A615 (GRADE 60).
 - ONE LAYER OF POLYETHYLENE VAPOR BARRIER SHALL BE PLACED UNDER CONCRETE FOUNDATION. VAPOR RETARDER TO BE 15 MIL. STRENGTH; ASTM E 1745 CLASS A, PERMEANCE LESS THAN 0.01 PERMS, EQUAL TO STEGO INDUSTRIES STEGO WRAP, ECOSHIELD-E 15 MIL BY EPFO, OR IRONBAR 15 BY FLATIRON FILMS. PROVIDE APPROPRIATE ACCESSORIES FOR A COMPLETE SYSTEM.
 - ALL REINFORCING STEEL AND MESH SHALL BE SECURELY SUPPORTED TO PREVENT BOTH VERTICAL AND HORIZONTAL MOVEMENT DURING CONCRETE PLACEMENT.
 - THE CONTRACTOR SHALL VERIFY ALL DROPS, OFFSETS, BRICK LEDGES, DIMENSIONS AND CONFIGURATIONS. CONTRACTOR MUST BE RESPONSIBLE FOR SAME.
 - GRADE BEAM SIZES MAY VARY BY -5%, +20%.
 - ALL SUB GRADE FILL SHALL BE SELECT GRANULAR MATERIAL COMPACTED TO 95% STANDARD PROCTOR DENSITY IN A MAXIMUM OF 6" LIFTS.
 - ALL RUNOFF WATER MUST BE CARRIED AWAY FROM THE SLAB TO PREVENT SATURATION OF THE SUB-BASE.
 - ALL TREES WITHIN CLOSE PROXIMITY SHALL BE REMOVED TO PREVENT THE ROOTS FROM EXTENDING UNDER THE SLAB.
 - PROVIDE AND MAINTAIN IMMEDIATE SITE DRAINAGE BEFORE, DURING, AND AFTER CONSTRUCTION. PROVIDE GRADING, SPALES, AND SUMP PUMPS AS MAY BE REQUIRED TO IMMEDIATELY DRAIN ALL RAIN WATER FROM THE CONSTRUCTION AREA. FOOTING EXCAVATIONS SHOULD BE OBSERVED AND CONCRETE PLACED AS QUICKLY AS POSSIBLE TO AVOID EXPOSURE OF THE FOOTING BOTTOMS TO WETTING AND DRYING. SURFACE RUNOFF WATER SHOULD BE DRAINED AWAY FROM THE EXCAVATIONS AND NOT BE ALLOWED TO POND PRIOR OR AFTER CONCRETE PLACEMENT. IF IT IS REQUIRED THAT A FOOTING EXCAVATIONS BE LEFT OPEN FOR MORE THAN ONE DAY, THEY SHOULD BE PROTECTED TO REDUCE EVAPORATION OR ENTRY OF MOISTURE.
 - TREAT SOIL BELOW SLAB FOR TERMITES.

DAMMON ENGINEERING, INC.
Architects & Engineers
www.dammonengineering.com
info@dammonengineering.com
PH: 985-645-5832
554 Old Spanish Trail
Slidell, LA 70068
F: 985-645-5950

| # | DESCRIPTION | DATE |
|---|-------------|------|
| | | |
| | | |

SEAL:
AS-BUILTS

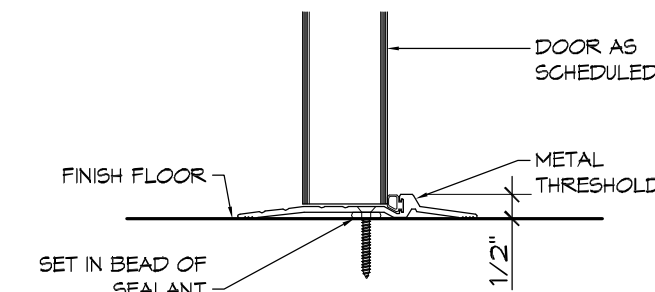
TERMINALS
CITY OF SLIDELL
SHEET TITLE:
FOUNDATION PLAN AND DETAILS
DRAWING NUMBER:
S1
SHEET No: 3 of 8

DOOR SCHEDULE

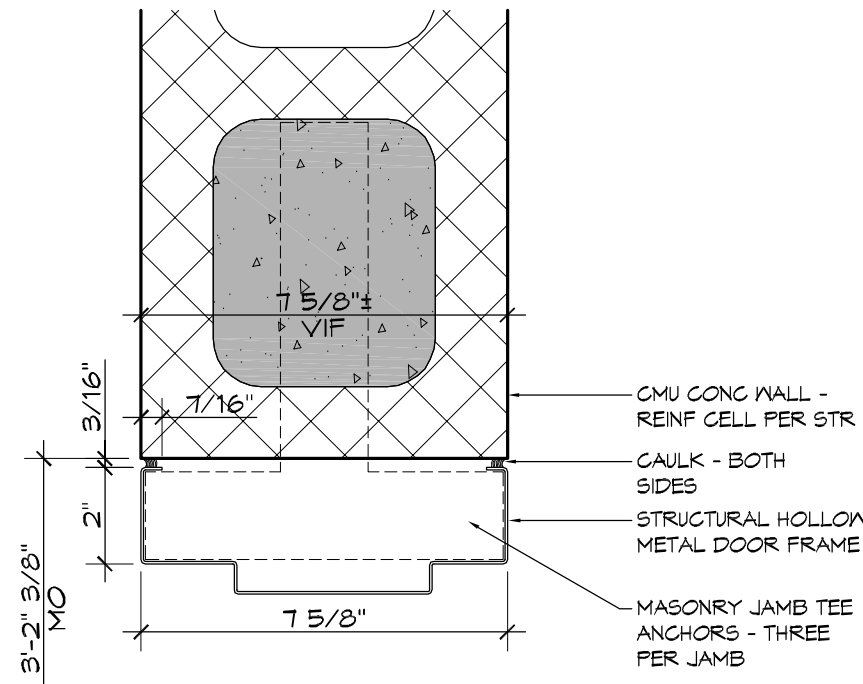
| MK | SIZE | TYPE | DOOR MATERIAL | FRAME MATERIAL | FRAME TYPE | FR | HNR | REMARKS |
|------|--------------------|------|---------------|----------------|------------|----|-----|---------|
| 102A | 3'-0"X7'-0"X1 3/4" | F | GALV MTL | HOLLOW METAL | F1 | 45 | 01 | |
| 103A | 3'-0"X7'-0"X1 3/4" | F | GALV MTL | HOLLOW METAL | F1 | NR | 01 | |
| 104A | 3'-0"X7'-0"X1 3/4" | F | GALV MTL | HOLLOW METAL | F1 | NR | 01 | |

FINISH SCHEDULE

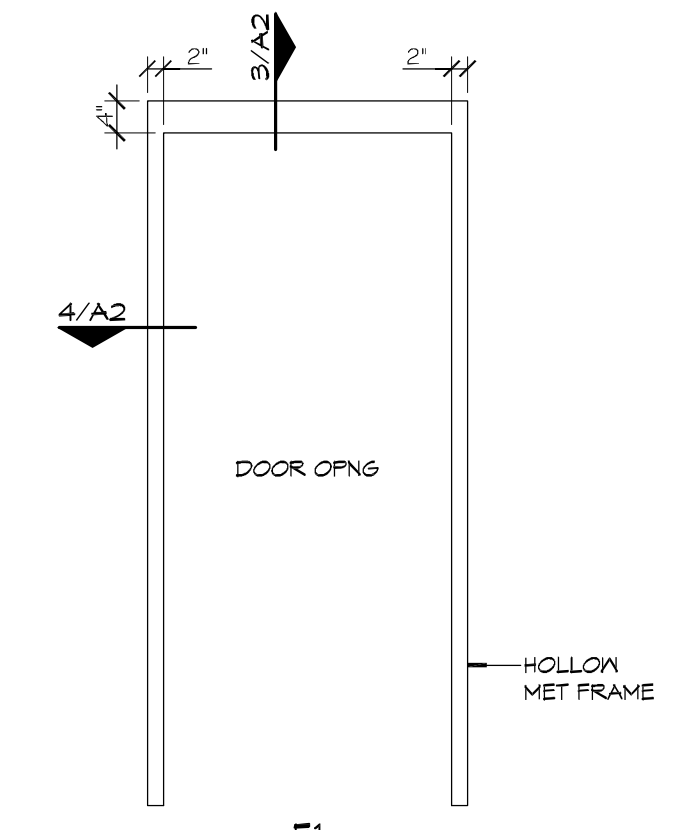
| RM # | ROOM NAME | FLOOR | WALLS | CEILING | CLNG HT | REMARKS |
|------|-----------------|--------------|---------|-----------------|---------|---------|
| 101 | FOYER | PAINTED CONC | PTD CMU | PTD OSB FLYWOOD | 10'-1" | |
| 102 | TABLES & CHAIRS | PAINTED CONC | PTD CMU | PTD OSB FLYWOOD | 10'-1" | |
| 103 | MENS TOILET | PAINTED CONC | PTD CMU | PTD OSB FLYWOOD | 10'-1" | |
| 104 | WOMENS TOILET | PAINTED CONC | PTD CMU | PTD OSB FLYWOOD | 10'-1" | |



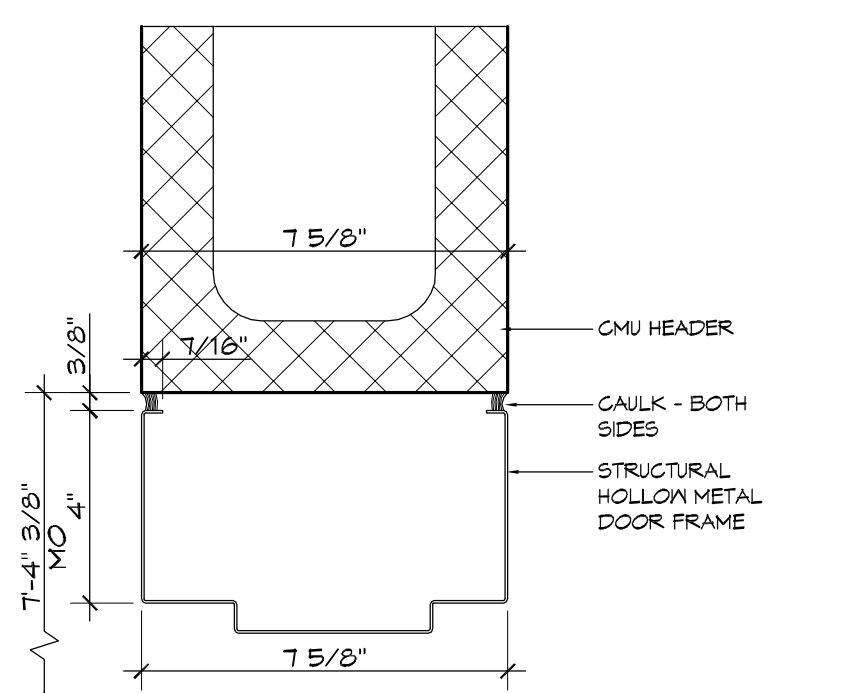
5 DOOR DETAIL
SCALE: 3" = 1'-0"



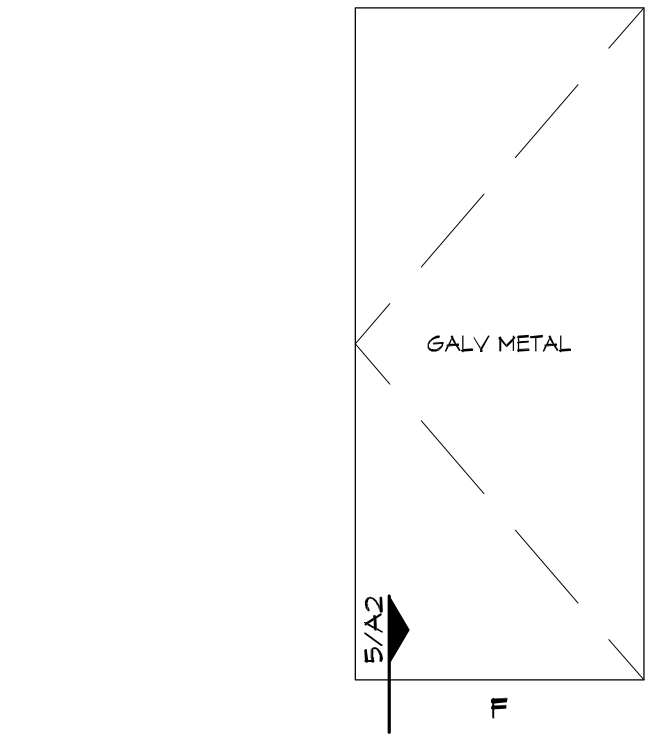
4 DOOR DETAIL
SCALE: 3" = 1'-0"



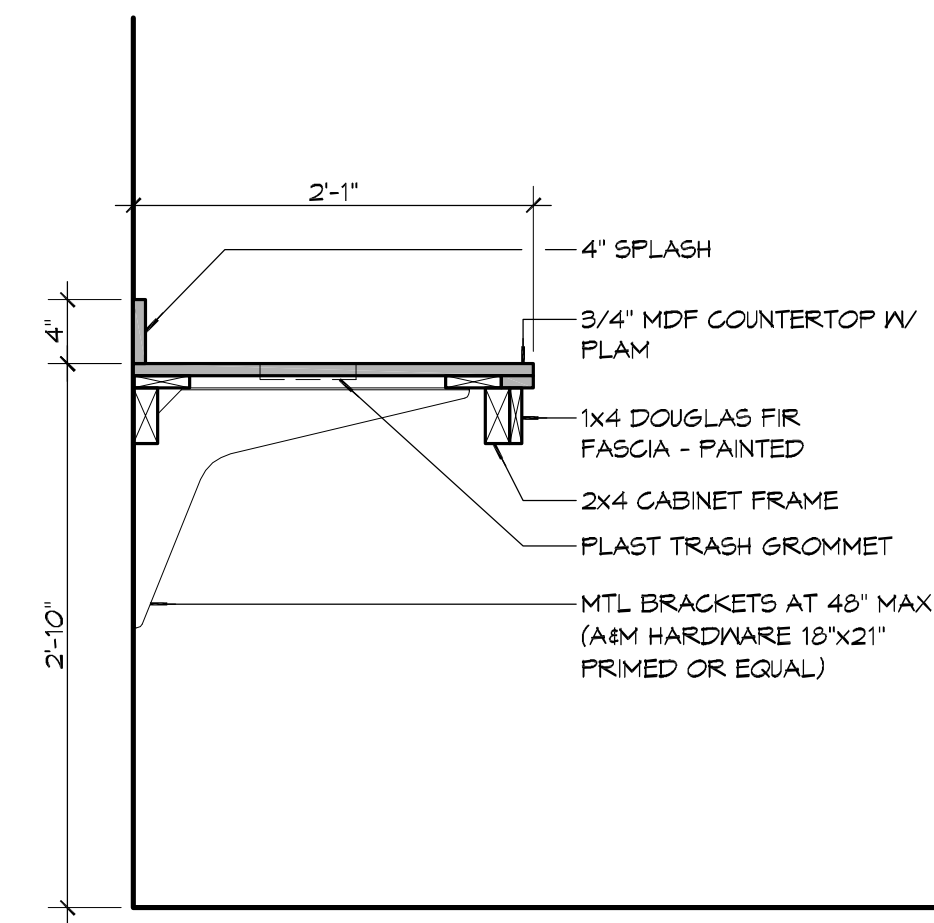
3 DOOR FRAME TYPE
SCALE: 1/2" = 1'-0"



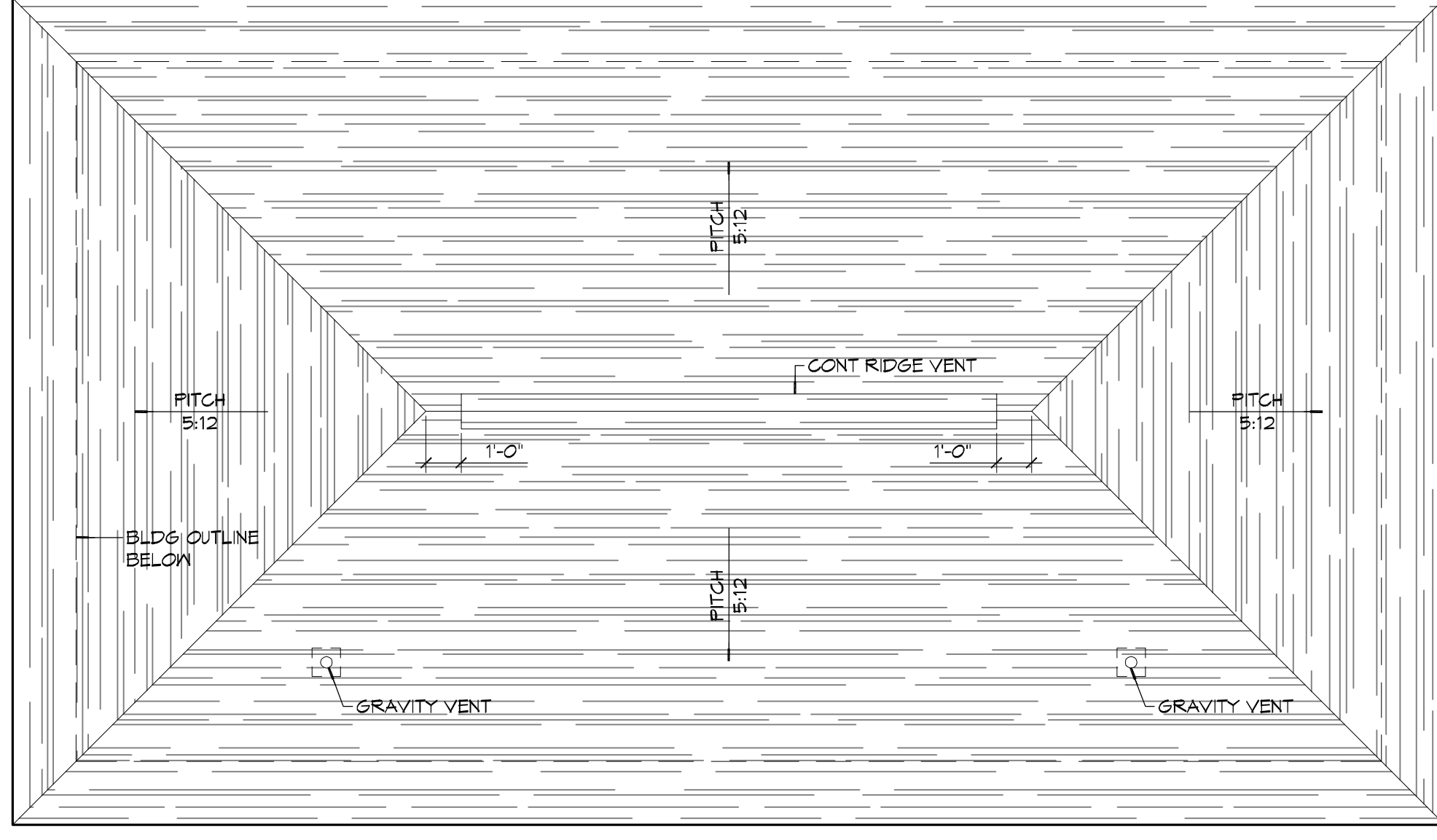
3 DOOR DETAIL
SCALE: 3" = 1'-0"



2 DOOR TYPE
SCALE: 1/2" = 1'-0"



6 MILLWORK DETAIL
SCALE: 1" = 1'-0"



1 ROOF PLAN
SCALE: 1/4" = 1'-0"

DAMMON ENGINEERING, INC.
Architects & Engineers
www.dammonengineering.com
info@dammoneng.com
504.985.6458
554 Old Spanish Trail
Slidell, LA 70458
F: 985.641.5990

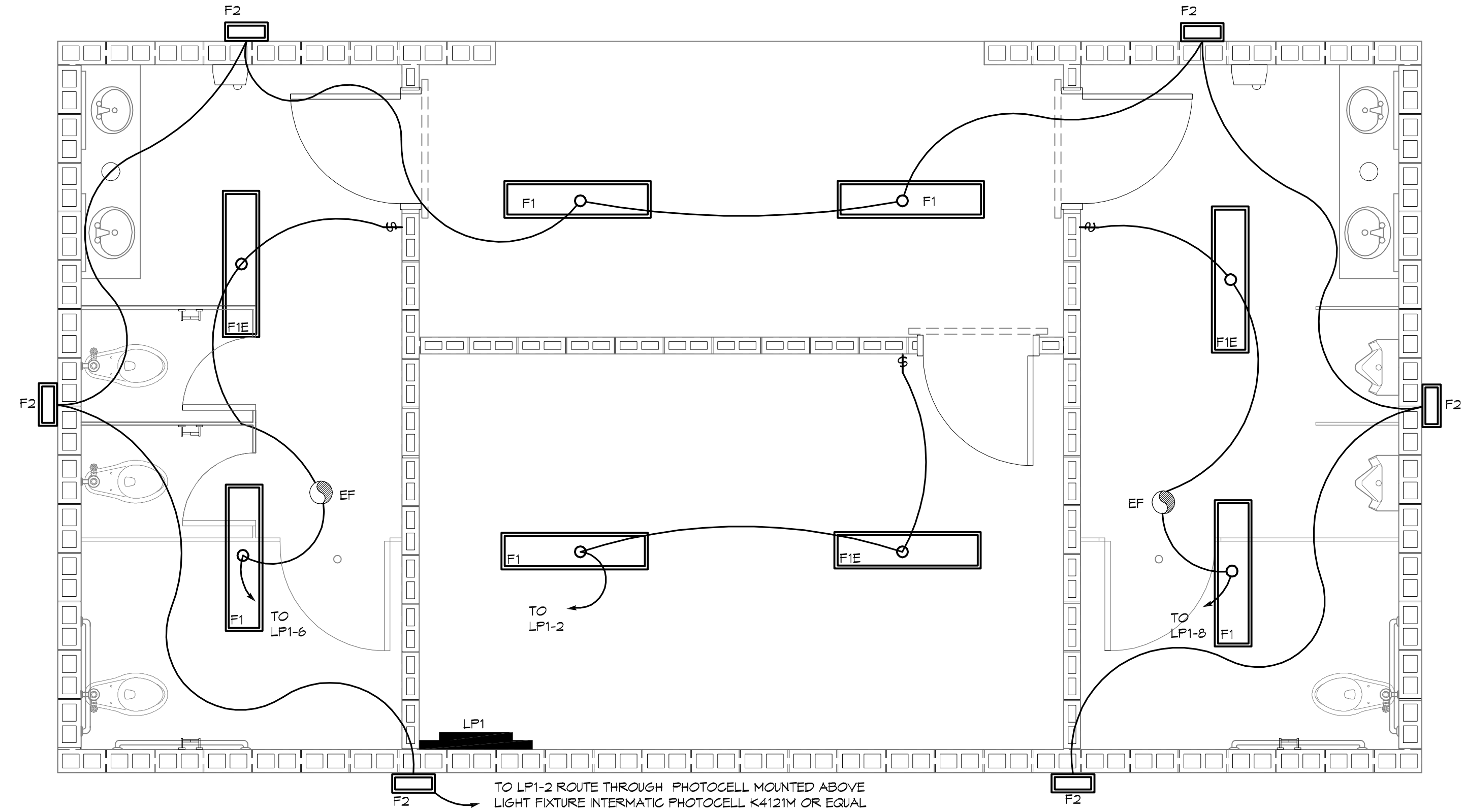
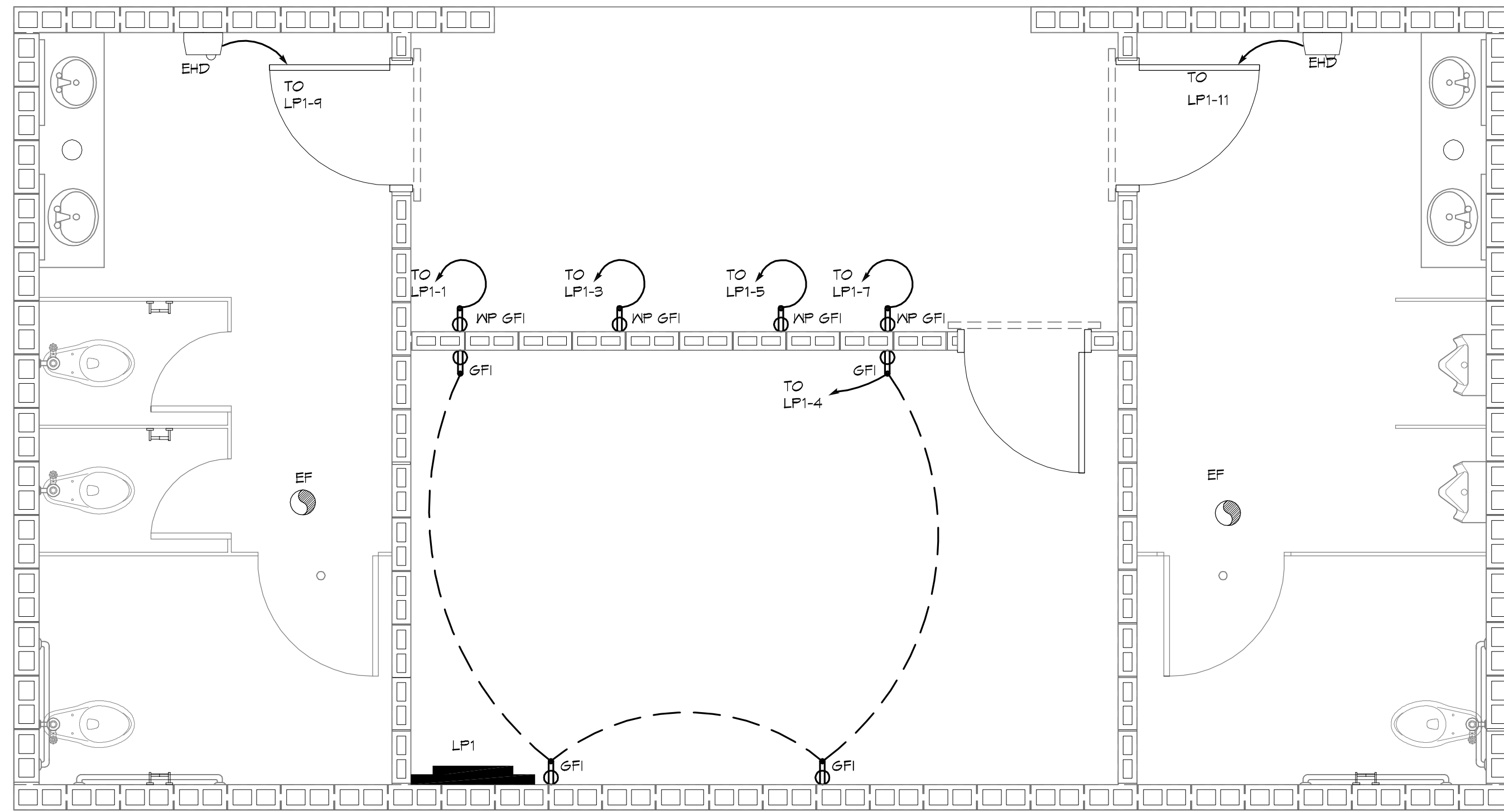
| REVISIONS | DATE |
|------------------|------------|
| # DESCRIPTION | 02-03-2015 |
| 1 PAINTED FLOORS | |

SEAL:
AS-BUILTS

CITY OF SLIDELL
T / K
R E M K
R O P A
T O S
R N S
T R A N S
T R E R A
T R Y E T
S L I D E L L
2602 2nd STREET
SLIDELL, LOUISIANA, 70458
JOB No: 2170 DATE: 4/2/2014
DRAWN BY: KJK CHECKED BY: KJK

SHEET TITLE:
**ROOF PLAN & MILLWORK
DOOR & FIN SCHEDULE
DOOR DETAILS**

DRAWING NUMBER:
A2
SHEET No: 6 of 8



2 ELECTRICAL PLAN - POWER
SCALE: 3/8" = 1'-0"

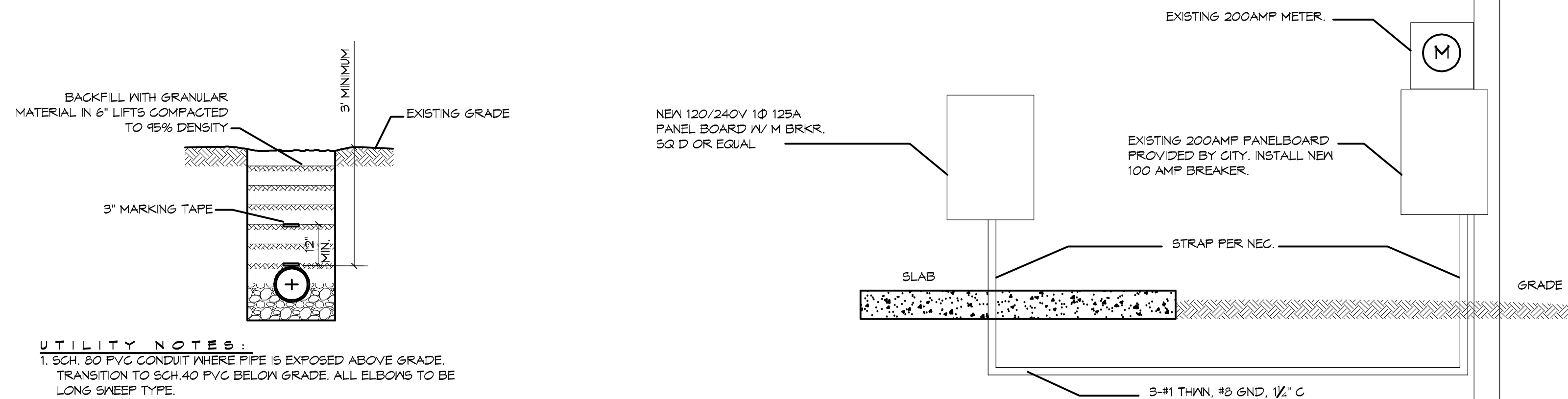
1 ELECTRICAL PLAN - LIGHTING
SCALE: 3/8" = 1'-0"

LEGEND

- GFI RECEPTACLE 20A 120V AT 36" A.F.F.
- FLUSH MOUNTED LIGHT SWITCH WITH STAINLESS STEEL DEVICE PLATE, 120V 20A, MOUNT CENTER @48" A.F.F.
- CEILING EXHAUST FAN
- ELECTRIC HAND DRYER, WORLD DRYER, MODEL DA52-4T3 OR EQUAL
- POWER PANEL

| LIGHT FIXTURE SCHEDULE | |
|------------------------|---|
| MARK | DESCRIPTION |
| F1 | SURFACE MOUNTED 1x4' FLUORESCENT LIGHT FIXTURE (2 BULB), TAMPER RESISTANT AND SUITABLE FOR DAMP LOCATIONS; VRS 3 32 VL 120 GEB10IS OR EQUAL. |
| F1E | SURFACE MOUNTED 1x4' FLUORESCENT LIGHT FIXTURE (2 BULB), TAMPER RESISTANT AND SUITABLE FOR DAMP LOCATIONS IV 90 MIN. BACKUP POWER; VRS 3 32 VL 120 GEB10IS ELEDYN OR EQUAL. |
| F2 | WALL SCONCE, WITH VANDAL GUARD, PER-LED 200MA BR1 M.VOLT 5F.VG. OR EQUAL, COLOR TO BE SELECTED BY ARCHITECT; MOUNT 12" BELOW SOFFIT. SEE EXTERIOR ELEVATIONS, ON SHEET A-1, FOR MOUNTING LOCATIONS. |

| PANEL: LP-1 | | PANEL: 120/240V, 125A 1Ø, 3W, IV/100A MAIN BRKR | | | | | | | | | |
|----------------------|----------------|---|---------|-----------------------------------|-----------------|-----------------|-----------|---------|---|-----------------|----------|
| LOCATION: | | SURFACE MOUNTED | | | | | | | | | |
| FEEDER SOURCE: CLECO | | W/EQUIPMENT GND BAR; 22,000 AIC | | | | | | | | | |
| CKT. NO. | THIN WIRE SIZE | LOAD DESCRIPTION | BREAKER | LOAD (VA) | AD ₁ | BQ ₁ | LOAD (VA) | BREAKER | LOAD DESCRIPTION | THIN WIRE SIZE | CKT. NO. |
| 1 | #12 | VENDING MACHINE | 15 1 | 1440 | | | 840 | 1 20 | EXTERIOR, FOYER AND STORAGE LIGHTING | #12 | 2 |
| 3 | #12 | VENDING MACHINE | 15 1 | 1440 | | | 840 | 1 20 | STORAGE OUTLETS | #12 | 4 |
| 5 | #12 | VENDING MACHINE | 15 1 | 1440 | | | 550 | 1 20 | WOMENS ROOM FLORESCENT LIGHTING AND EXHAUST FAN | #12 | 6 |
| 7 | #12 | VENDING MACHINE | 15 1 | 1440 | | | 550 | 1 20 | MENS ROOM FLORESCENT LIGHTING AND EXHAUST FAN | #12 | 8 |
| 9 | #10 | EHD, WOMENS | 20 1 | 1725 | | | - | 1 20 | SPARE | - | 10 |
| 11 | #10 | EHD, MENS | 20 1 | 1725 | | | - | 1 20 | SPARE | - | 12 |
| 13 | - | SPACE | - | - | | | - | - | SPACE | - | 14 |
| 15 | - | SPACE | - | - | | | - | - | SPACE | - | 16 |
| 17 | - | SPACE | - | - | | | - | - | SPACE | - | 18 |
| 19 | - | SPACE | - | - | | | - | - | SPACE | - | 20 |
| 21 | - | SPACE | - | - | | | - | - | SPACE | - | 22 |
| 23 | - | SPACE | - | - | | | - | - | SPACE | - | 24 |
| | | | | TOTAL CONNECTED LOAD (VA): 11,710 | | | | | | GROUND BUS | |
| | | | | A0=5,995 | | B0=5,795 | | | | GROUND WIRE (G) | |



ELECTRICAL NOTES

1. ALL WORK SHALL CONFORM TO THE LATEST EDITION OF THE NATIONAL ELECTRICAL CODE, THE GOVERNING ELECTRICAL CODE AND ALL OTHER INSPECTION DEPARTMENTS HAVING JURISDICTION. OBTAIN CERTIFICATES OR APPROVAL WHERE REQUIRED.
2. ALL MATERIALS FURNISHED SHALL BE NEW AND SHALL BE U.L. LISTED.
3. THE DRAWINGS INDICATE SIZE AND GENERAL LOCATION OF WORK. SCALE DIMENSIONS SHALL NOT BE USED. THE EXACT LOCATION AND LOCATION OF ALL LIGHTING FIXTURES, RECEPTACLES AND TELEPHONE OUTLETS, ETC. SHALL BE DETERMINED BY ACTUAL CONDITIONS IN THE FIELD.
4. PRIOR TO BIDDING, CONTRACTOR SHALL VISIT THE JOB SITE AND FAMILIARIZE THEMSELVES WITH THE EXISTING CONDITIONS.
5. ELECTRICAL CONTRACTOR SHALL COORDINATE HIS WORK WITH OTHER TRADES AND WITH OTHER CONTRACTORS WHOSE WORK MAY AFFECT THIS INSTALLATION.
6. ELECTRICAL CONTRACTOR SHALL COORDINATE INCOMING ELECTRICAL SERVICE WITH UTILITY COMPANY AND INCLUDE IN HIS BID ALL CHARGES AND FEES INCURRED IN MODIFICATIONS.
7. WHERE MORE THAN ONE SWITCH OCCURS IN THE SAME LOCATION, THEY SHALL BE INSTALLED IN A GANG TYPE BOX UNDER ONE COVER PLATE.
8. ELECTRICAL CONTRACTOR, BEFORE INSTALLING ANY OF THE WORK, SHALL SEE THAT IT DOES NOT INTERFERE WITH CLEARANCES REQUIRED FOR FINISHED CEILING, HUNG CEILING, PLASTER, PARTITIONS, WALLS, ETC. AS SHOWN IN THE ARCHITECTURAL DRAWINGS AND DETAILS. IF ANY WORK IS INSTALLED AND IT LATER DEVELOPS THAT SUCH DETAILS OR DESIGN CANNOT BE FOLLOWED, THE CONTRACTOR, AT HIS OWN EXPENSE, SHALL MAKE SUCH CHANGES IN THE WORK AS DIRECTED BY THE ARCHITECT, AS WELL AS TO PERMIT THE INSTALLATION OF THE ARCHITECTURAL WORK AS SHOWN ON THE PLANS AND DETAILS.
9. PERFORM TEST REQUIRED BY THE OWNER OR THE ENGINEER IN CONNECTION WITH THE OPERATION OF THE ELECTRICAL SYSTEM IN THE BUILDING.
10. ALL TESTS SHALL BE MADE IN ACCORDANCE WITH THE LATEST STANDARD OF THE IEEE AND THE NATIONAL ELECTRICAL CODE.
11. MINIMUM CONDUCTOR SIZE SHALL BE #12, 600V INSULATION. MINIMUM SIZE CONDUIT SHALL BE 3/4" EMT FOR INTERIOR USE, AND 3/4" RIGID ALUMINUM FOR EXTERIOR USE. USE TYPE MC CABLE COPPER, FOR LIGHTS AND RECEPTACLE CIRCUITS. EXTERIOR FITTINGS SHALL BE CAST BOXES AND COVERS. INTERIOR FITTINGS SHALL BE CAST WHERE EXPOSED ON WALLS. STAMPED BOXES MAY BE USED ABOVE CEILING IN AIR CONDITIONED SPACES.
12. CONTRACTOR SHALL INSTALL WIRING AND OTHER CIRCUIT COMPONENTS TO MATCH EQUIPMENT ACTUALLY INSTALLED.
13. INSTALL GROUND FAULT RECEPTACLES AT RECEPTACLE LOCATIONS WITHIN 5' OF SINKS OR LAVATORIES, AND AT EXTERIOR LOCATIONS. EXTERIOR RECEPTACLES SHALL ALSO BE WEATHERPROOF.
14. BONDING AND GROUNDING SHALL BE IN ACCORDANCE WITH NFPA 70:230-63, NFPA 70:230-23, 250-11.4, 250-12.
15. GROUND NEUTRAL IN ACCORDANCE WITH NFPA 70:250-23B.
16. FUSES SHALL BE ITC CLASS K5, 250 VOLT, 200,000 AMP INTERRUPTING CAP.
17. EXTERIOR LIGHTING SHALL BE SHADED OR INWARDLY DIRECTED IN SUCH A MANNER SO THAT NO DIRECT LIGHTING OR GLARE IS CAST BEYOND THE PROPERTY LINE. THE INTENSITY OF SUCH LIGHTING SHALL NOT EXCEED ONE FOOT CANDLE AS MEASURED AT THE ABUTTING PROPERTY LINE.
20. ALL ELECTRICAL, MECHANICAL AND PLUMBING PENETRATING FIRE PARTITIONS SHALL BE FIRE CAULKED. (PENETRATIONS THROUGH RATED CONSTRUCTION SHALL BE SEALED WITH A MATERIAL CAPABLE OF PREVENTING THE PASSAGE OF FLAMES AND HOT GASES WHEN TESTED IN ACCORDANCE WITH ASTM-E814.)

DAMMON ENGINEERING, INC.
Architects & Engineers

www.dammonengineering.com
 info@dammonengineering.com
 Chief Architect: Kevin J. Kichen, NCARB
 Chief Engineer: Brian Mettich, PE
 554 Old Spanish Trail
 Slidell, LA 70688
 P: 985-641-5950

| # | DESCRIPTION | DATE |
|---|-------------|-----------|
| 1 | ADDDDDMM | 8-11-2014 |

SEAL:

AS-BUILTS

TREY ETHERINGTON
 PROJECT MANAGER

SLIDELL, LOUISIANA, 70458

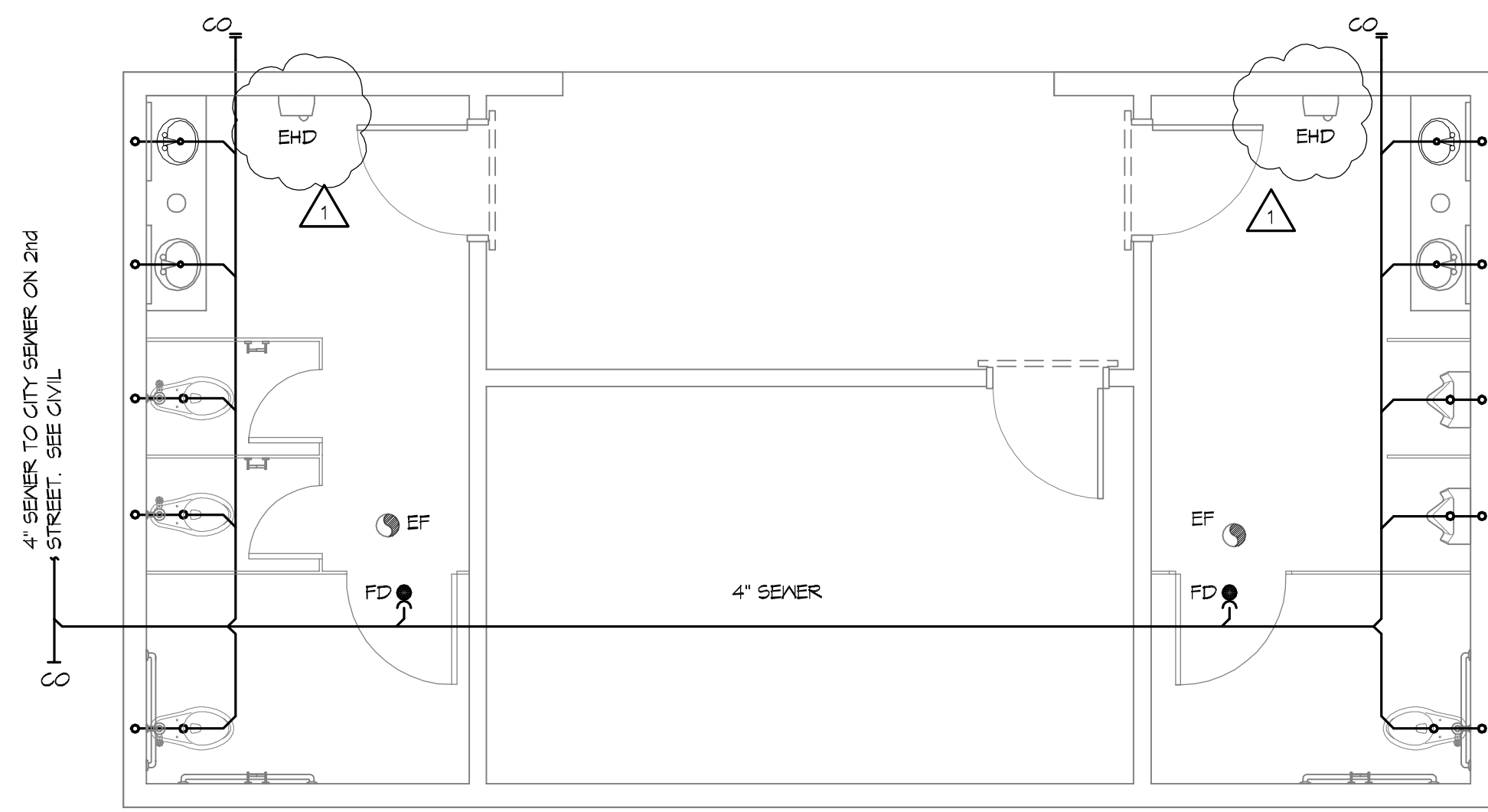
2602 2nd STREET
 SLIDELL, LOUISIANA, 70458

DATE: 4/27/2014
 CHECKED BY: GKD
 DRAWN BY: KUK, DFP

SHEET TITLE:
ELECTRICAL POWER AND LIGHTING PLANS

DRAWING NUMBER:
11

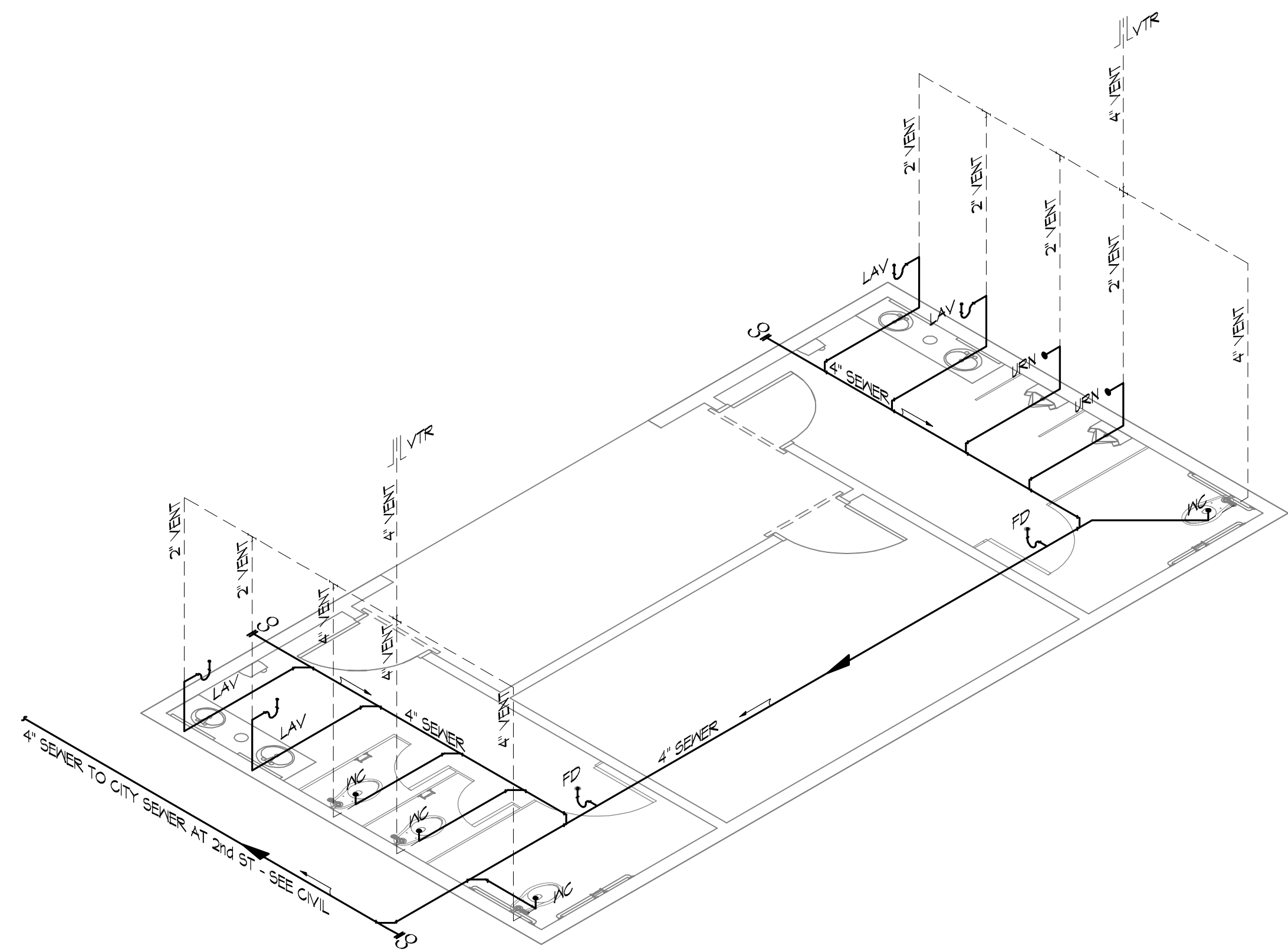
SHEET NO: 7 of 8



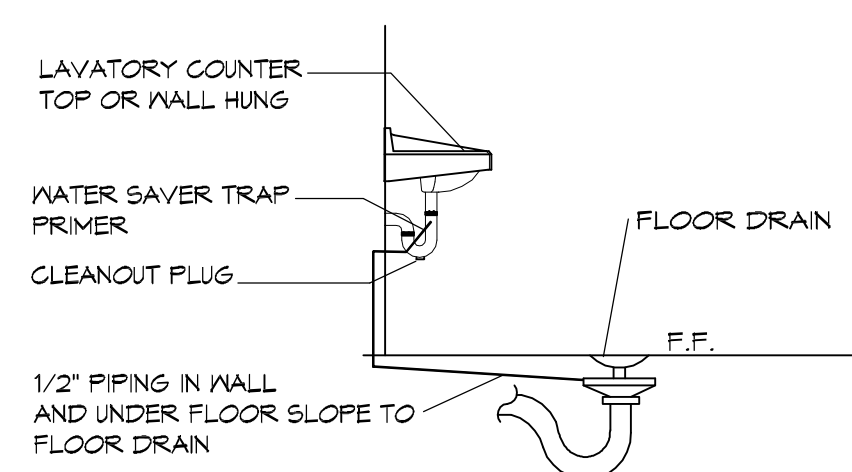
1 PLUMBING PLAN
SCALE: 1/4" = 1'-0"

| PLUMBING FIXTURE SCHEDULE | | | | | | | |
|---------------------------|---------------------|---------------|--------|------------|-----------|--|-------|
| ITEM | DESCRIPTION | SOIL OR WASTE | VENT | COLD WATER | HOT WATER | DESCRIPTION (AMERICAN STANDARD FIXTURE EXCEPT AS NOTED) | NOTES |
| WC | WATER CLOSET | 4" | 4" | 1" | — | KOHLER K-4368 WITH ZURN Z-600XL SUPPLY FITTING AND BENEKE 52766 ELONGATED WHITE SEAT, WITH BOLT CAPS. | 1 & 2 |
| URN | URINAL WALL HUNG | 1 1/2" | 1 1/2" | 1" | — | KOHLER K-5016-T WITH ZURN Z-6003XL SUPPLY FITTING, PROVIDE Z-1254 URINAL CARRIER w/ BEARING PLATE. | 1 & 2 |
| LAV | LAVATORY | 1 1/2" | 1 1/2" | 1/2" | — | AMERICAN STANDARD AQUALYN DROP-IN SINK, 0475.047, WITH BRADLEY AERADA 1200 SERIES | 2 & 3 |
| FD | FLOOR DRAIN | 3" | 2" | — | — | COATED CAST IRON WITH ADJUSTABLE NICKEL BRONZE GRATE, TRAP PRIMER CONNECTION AND DEEP SEAL TRAP, EQUAL TO JAY R. SMITH 2010-B-P. | 2 |
| WCO | WALL CLEAN-OUT | — | — | — | — | MADE #W-8453-R6, WITH BRASS PLUG AND ROUND STAINLESS STEEL SECURED ACCESS COVER. | 2 |
| EF | CEILING EXHAUST FAN | — | — | — | — | EXHAUST FAN WITH GRILL AND BACKDRAFT DAMPER, GREENHECK SP-A200, 1"Ø UP TO GREENHECK MDL RCC-T CURB CAP W/CURB ON ROOF. | 2 |
| EHD | ELECTRIC HAND DRYER | — | — | — | — | ELECTRIC HAND DRYER, WORLD DRYER, MODEL DA52-RT3 OR EQUAL | 2 |

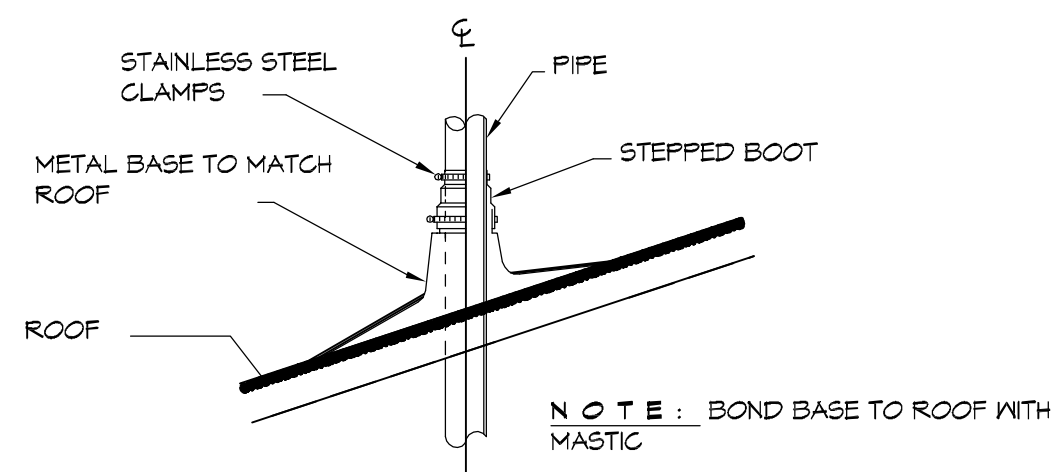
1. PROVIDE ADA FIXTURE.
2. PROVIDE LISTED FIXTURE(S) OR EQUAL.
3. INSULATE PIPING FOR HANDICAP FIXTURE.



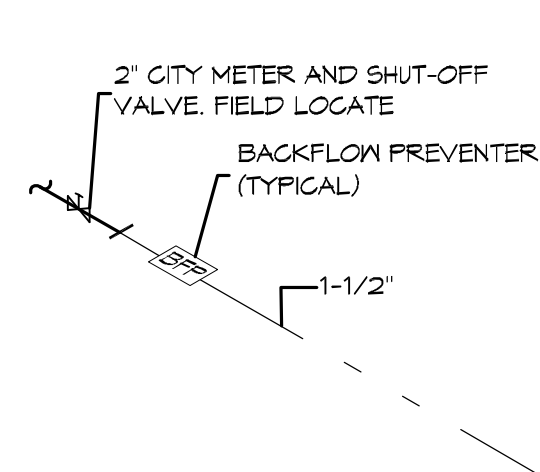
2 PLUMBING RISER DIAGRAM
SCALE: NTS



3 TYP DETAIL
SCALE: NTS
FLOOR DRAIN



4 TYP DETAIL
SCALE: NTS
VENT THROUGH ROOF



5 TYP DETAIL
SCALE: NTS
WATER METER SERVICE

PLUMBING NOTES

- PROVIDE ALL LABOR, MATERIAL AND EQUIPMENT FOR A COMPLETE OPERATING SYSTEM. THE SYSTEM SHALL INCLUDE COLD WATER PIPING, SEWER AND VENT PIPING, INSULATION, HANGERS, VALVES, SUPPORTS WITHOUT ANY RESTRICTIONS TO COLUMN, CUT AND PATCH AS REQUIRED TO INSTALL PIPES.
- ALL WORK AND MATERIAL SHALL CONFORM STRICTLY TO THE LATEST LOCAL, CITY, PARISH, STATE AND NATIONAL GOVERNING CODES.
- CONTRACTOR IS TO FIELD VERIFY ALL EXISTING UTILITY LOCATIONS, ELEVATIONS AND SIZES PRIOR TO COMMENCING ANY WORK. CONTRACTOR SHALL PAY NECESSARY FEES FOR THE UTILITIES CONNECTIONS.
- CONTRACTOR IS RESPONSIBLE TO VERIFY THE EXISTING INVERTS AND SET NEW INVERTS OF SEWERAGE AND DRAINAGE PIPES.
- SEWERAGE LINES 3-INCH AND SMALLER SHALL BE SLOPED 1/4" PER FOOT AND LINE 4-INCH AND LARGER SHALL BE 1/8" PER FOOT.
- TEST ALL PIPING AT REQUIRED PRESSURE.
- ALL PLUMBING SHALL BE CLOSELY COORDINATED WITH STRUCTURAL SYSTEM, MECHANICAL SYSTEM AND ELECTRICAL TO INSURE NO TRADES WILL CONFLICT WITH EACH OTHER.
- DO NOT SCALE DRAWINGS. SEE ARCHITECTURAL DRAWINGS FOR EXACT LOCATIONS OF DOORS, WINDOWS, WALLS, FIXTURES, ETC.
- ALL WATER MAINS AND PIPING NOT SHOWN FOR CLARITY. ALL LOCATIONS FIELD VERIFIED.
- DOMESTIC HOT AND COLD WATER PIPING AND FITTINGS UNDER SLAB SHALL BE ASTM B88 COPPER WATER TUBE, TYPE K SOFT ANNEALED. NO JOINTS SHALL BE ALLOWED UNDER THE SLAB.
- DOMESTIC WATER PIPING AND FITTINGS ABOVE THE SLAB SHALL BE ASTM B88 COPPER WATER TUBE, TYPE L HARD DRAWN WITH COPPER PRESSURE TYPE FITTINGS, ANSI B16.22. THE JOINTS SHALL BE SOLDERED TYPING USING ASTM B32, ALLOY GRADE 95A (95-5) SOLDER WITH BELL AND SPIGOT ENDS AND ONE PIECE NEOPRENE INSERT TYPE GASKET. USE PVC SCHEDULE 40 OR ABS DWV PIPES AND FITTINGS WHERE PERMITTED BY CODE.
- ALL WATER PIPING AND FITTINGS ABOVE THE FLOOR SHALL BE INSULATED WITH 3/4" THICK FIBERGLASS INSULATION AND JACKET.
- ALL ELECTRICAL, MECHANICAL AND PLUMBING PENETRATING FIRE PARTITIONS SHALL BE FIRE CAULKED. (PENETRATIONS THROUGH RATED CONSTRUCTION SHALL BE SEALED WITH A MATERIAL CAPABLE OF PREVENTING THE PASSAGE OF FLAMES AND HOT GASES WHEN TESTED IN ACCORDANCE WITH ASTM-E814.)
- ALL PLUMBING LINES SHOWN ARE DIAGRAMATIC.

DAMMON ENGINEERING, INC.
Architects & Engineers

www.dammonengineering.com
info@dammonengineering.com
PH: 985.649.5832
F: 985.641.5990

Chief Architect: Kevin S. Kitchin, NCARB
Chief Engineer: Brian Mitchen, PE
554 Old Spanish Trail
Slidell, LA 70458

| REVISIONS | # | DESCRIPTION | DATE |
|-----------|---|-------------|-----------|
| | 1 | APPENDIX 1 | 8-11-2014 |

SEAL:

AS-BUILTS

CITY OF SLIDELL
THERESA TROPARK
TRAVETRENS
2602 2ND STREET
SLIDELL, LOUISIANA, 70458

JOB No: 210
DATE: 4/2/2014
DRAWN BY: KJK
CHECKED BY: CKD

SHEET TITLE:
PLUMBING PLAN

DRAWING NUMBER:
01