

BACKFILL WITH GRANULAR MATERIAL IN 6" LIFTS COMPACTED TO 95% DENSITY (BACKFILL MUST BE ACCEPTABLE MATERIAL W/ APPROVAL OF ENGINEER)

EXIST. GROUND

VARIES

CRUSHED GRAVEL OR (6/10) LIVERSTONE

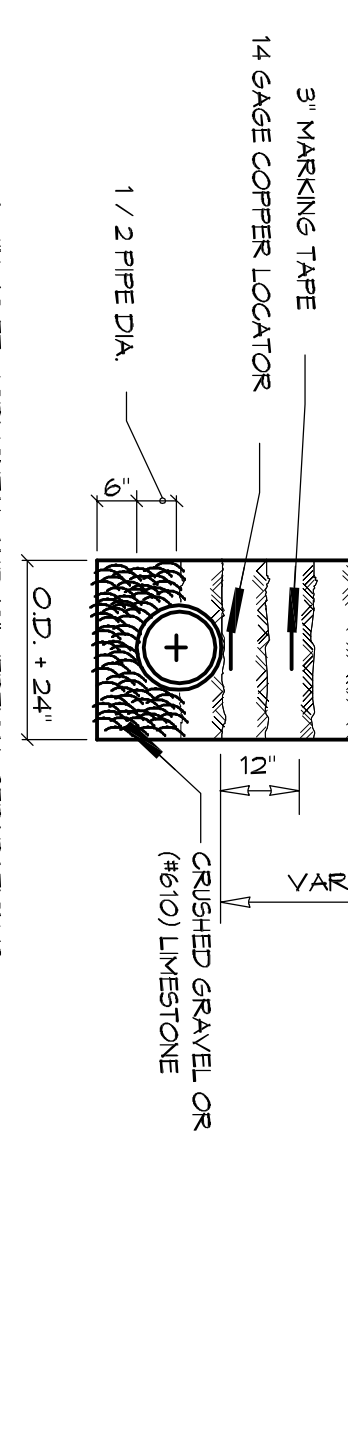
1 1/2 PIPE DIA

3" MARKING TAPE

14 GAUGE COPPER LOCATOR

OD = 24"

A MIN. 10 FT. HORIZONTAL AND 18" VERTICAL SEPARATION IS REQUIRED BETWEEN WATER & SEWER LINE



PIPE BEDDING & WATER DETAIL

PIPE LINE

CONCRETE MIX DESIGN

MIX FOR ONE CUBIC YARD OF FIBER-REINFORCED CONCRETE:

4000 PSI

28 DAY STRENGTH

CEMENT (ASTM C-150, TYPE I/II) 4.64 BAGS (456 LBS.)

FLY ASH (ASTM C-618) 1.16 BAGS (109 LBS.)

GRAVEL (ASTM C-33, GRADE A) 1226 LBS.

SAND (ASTM C-33) 302 GALLONS (250 LBS.)

WATER (PROTECTOR) 15.5 GAL

WATER REDUCER (ASTM C-494) 1.5 LBS. (OR MICROFIBERS, AS SPECIFIED BELOW)

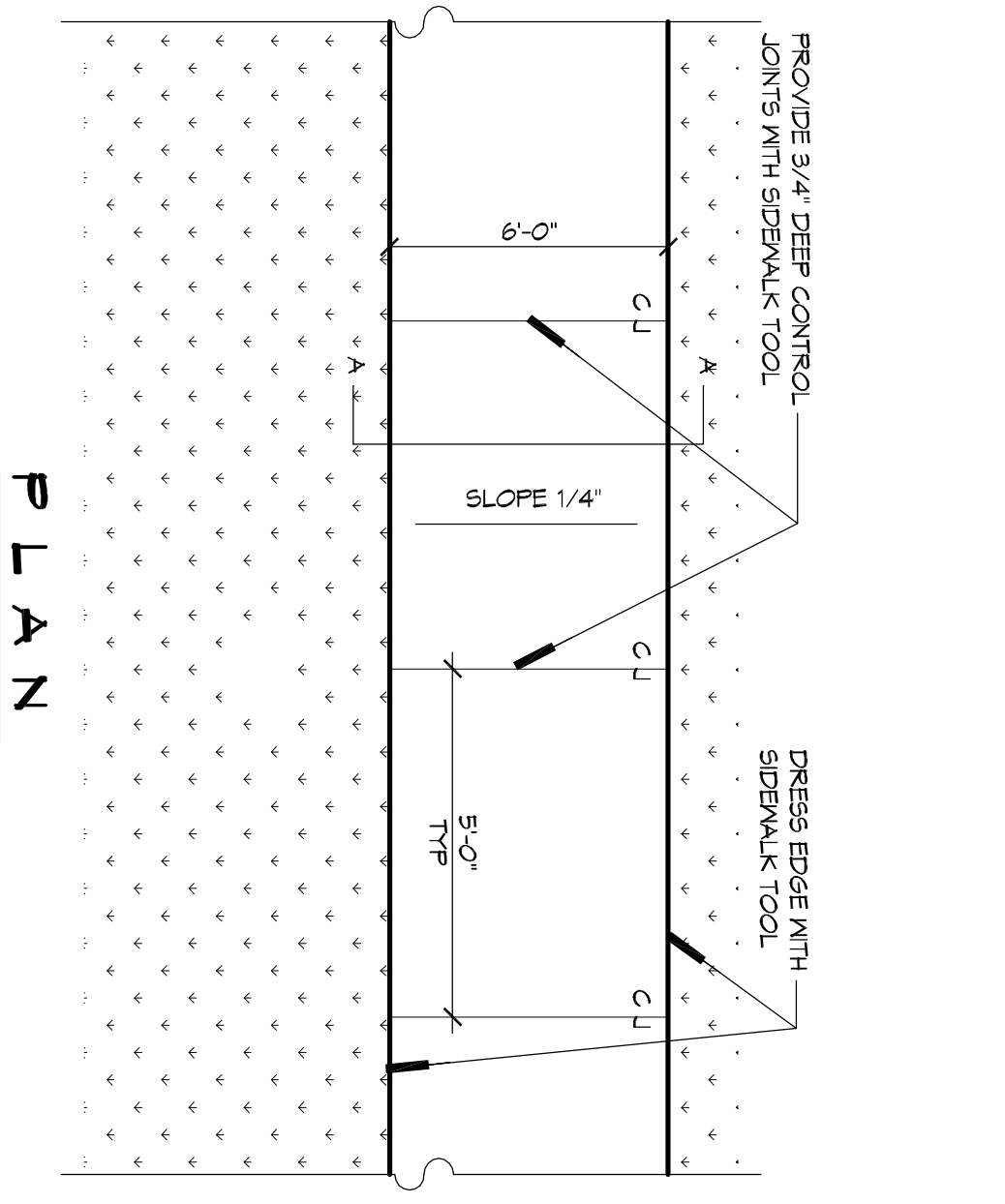
1.5 LBS. (OR MICROFIBERS, AS SPECIFIED BELOW)

FIBER REINFORCEMENT FOR ALL CONCRETE SIDEWALKS AND DRIVEWAYS SHALL BE MATRIX MONOLITHIC MICROFIBER AS MANUFACTURED BY FRC INDUSTRIES OR APPROVED EQUAL, APPLIED THROUGHOUT THE CONCRETE MIXTURE. ALTERNATE PRODUCTS MUST BE PRE-APPROVED BY THE CITY ENGINEER IN WRITING. CELLULOSE TREATED OR UN-TREATED), AS GLASS FIBER AND POLYESTER FIBERS ARE SPECIFICALLY PROHIBITED FROM USE.

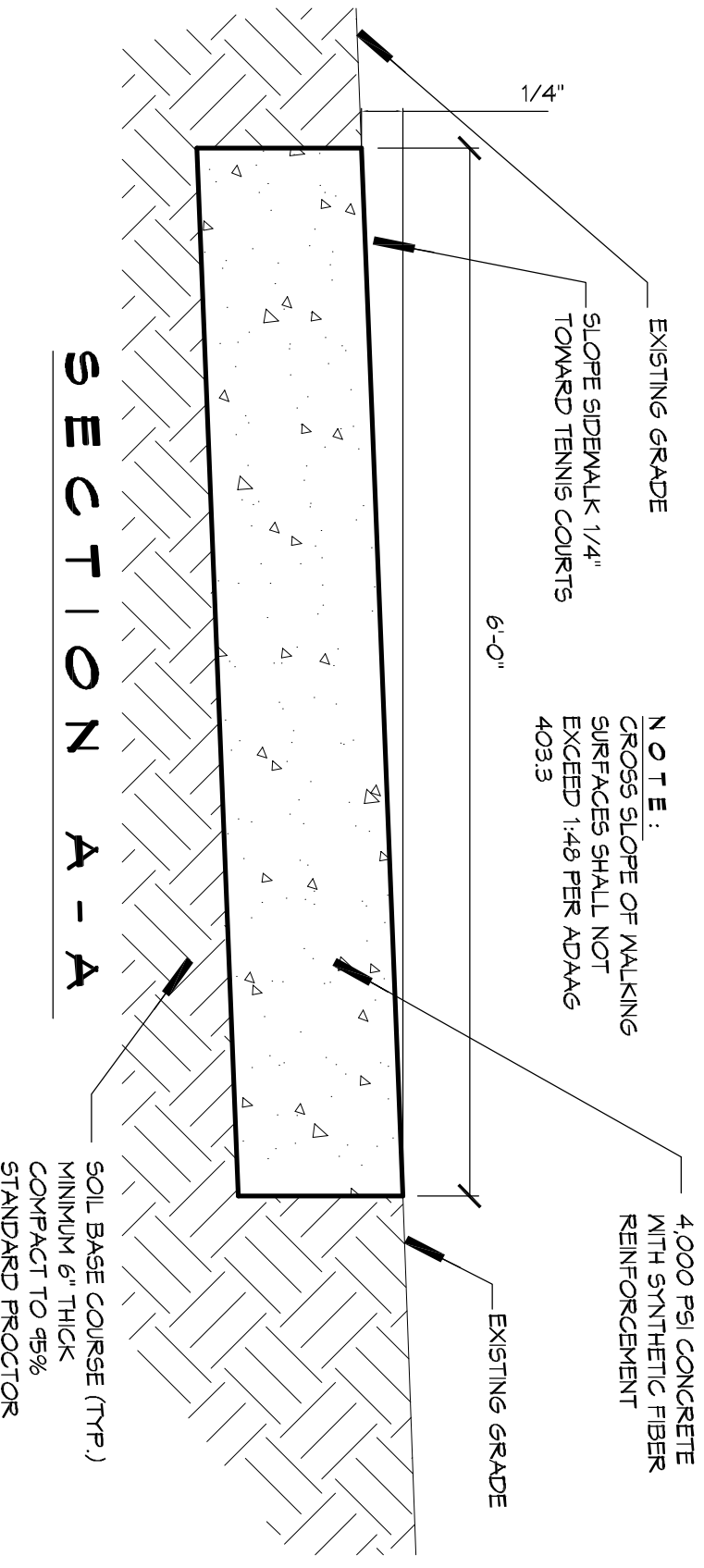
CONTRACTOR SHALL FINISH ALL MATERIALS, LABOR, AND EQUIPMENT NEEDED TO CONSTRUCT HANDICAP RAMPS, AT INTERSECTIONS, MEDIANS, OR AS DIRECTED BY THE CITY ENGINEER. THE CONCRETE USED TO CONSTRUCT THE RAMPS SHALL BE 6" (6") THICK 4000-PSI AT 28 DAYS, WHERE NECESSARY OR AS DIRECTED BY THE CITY ENGINEER. EXISTING SIDEWALKS SHALL BE REMOVED AND REPLACED WITH NEW PORTLAND CEMENT CONCRETE. SIDEWALKS AND TRUNCATED DOME TILE AS STIPULATED ACCORDING TO AMERICAN DISABILITY ACT REQUIREMENT. TRUNCATED DOME TILE SHALL BE MINIMUM 1/4" THICK WITH BEBEDDED TRUNCATED DOME TILE ON CENTER. SIDEWALKS SHALL BE FINISHED TO THE FINISH ELEVATION OF THE ADJACENT DRIVEWAY OR STREET OR PREVIOUS HANDICAP RAMP SHALL CONSIST OF ONLY ONE TILE WHICH SHALL BE ANCHORED INTO THE CONCRETE. THESE ARE A NO DIRECT PAY ITEM.

SIDEWALK NOTES

1. SIDEWALKS SHALL BE LOCATED AS NOTED. FIELD VERIFY WITH CITY ENGINEERING AND DAMMON ENGINEERING PRIOR TO FORMING. SLOPING DIMENSION TO PRELIMINARY LOCATE SIDEWALKS IS PERMITTED.
2. ALL SIDEWALKS SHALL BE CONSTRUCTED TO PORTLAND CEMENT CONCRETE AND HAVE A MIN. THICKNESS OF 4".
3. SAND BASE COURSE (TYP) SHALL HAVE A MINIMUM OF 6" THICK CONCRETE TO 4% STANDARD PROCTOR.
4. PROVIDE SYNTHETIC FIBER REINFORCING IN ACCORDANCE WITH ASTM C 1116 IN ALL CONCRETE SIDEWALKS.
5. ALL SIDEWALKS SHALL BE SLOPED TO A DEPTH OF 3/4" AT THE FOOT INTERSECTIONS.
6. PROVIDE DETECTABLE WARNING SYSTEM (CAST IN PLACE) WHERE NEW SIDEWALKS TERMINATE INTO EXISTING STREETS AS NOTED.
7. ELEVATIONS SHOWN ARE VSL.
8. FIELD VERIFY ALL ELEVATIONS AND DRAINAGE SYSTEM PLACEMENT PRIOR TO START OF WORK.



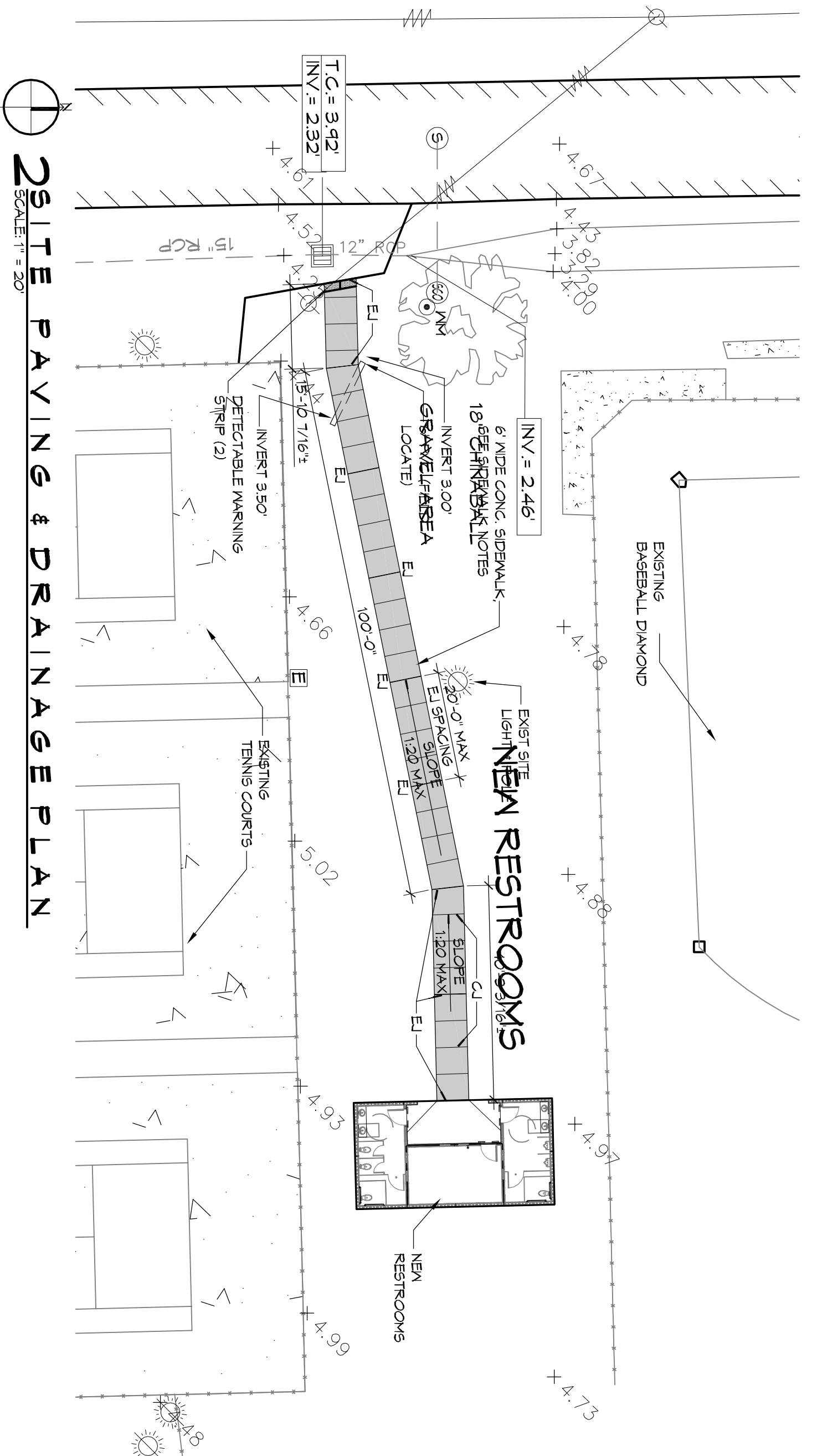
PLAN



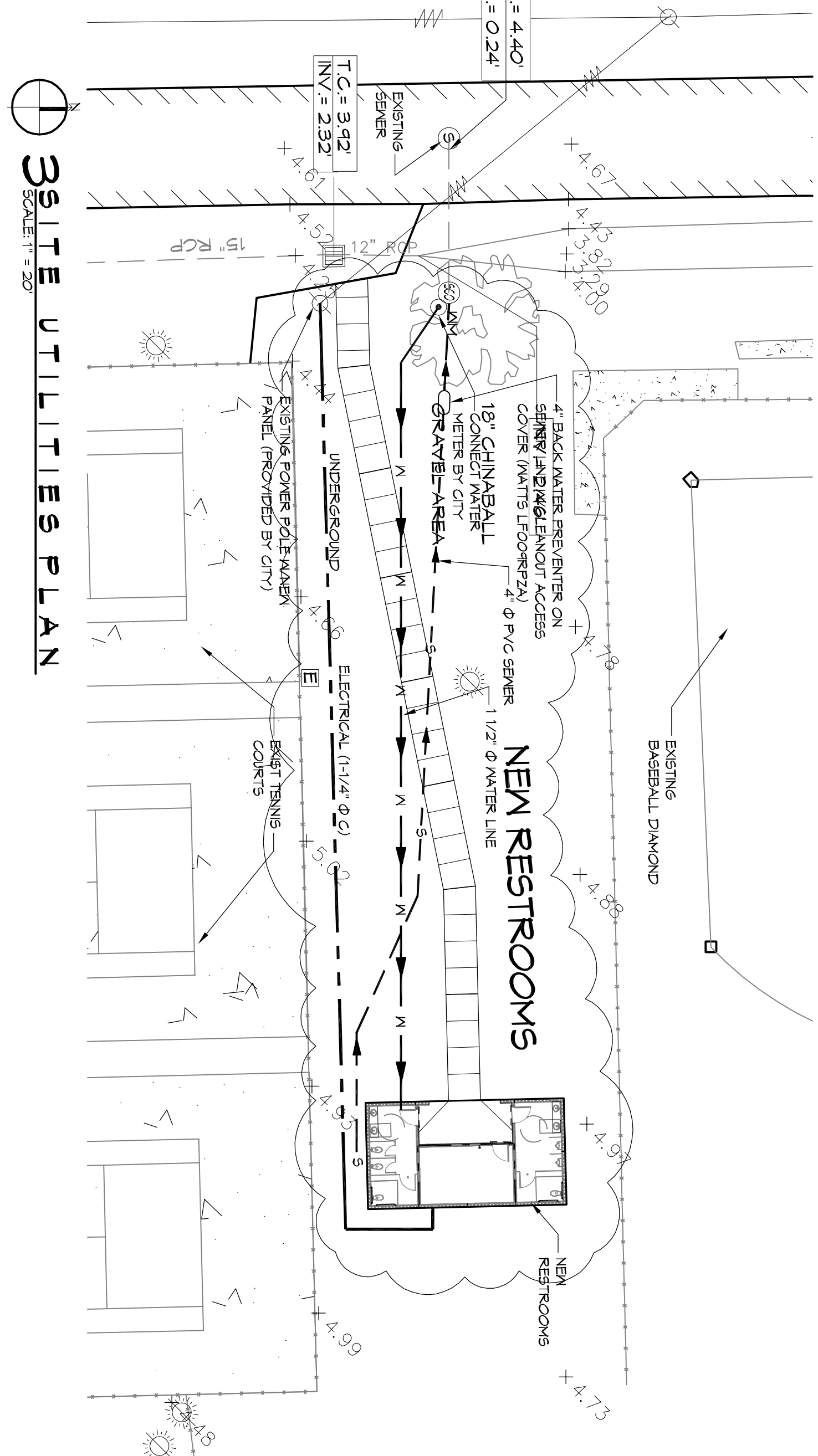
SECTION A - A

DETAIL

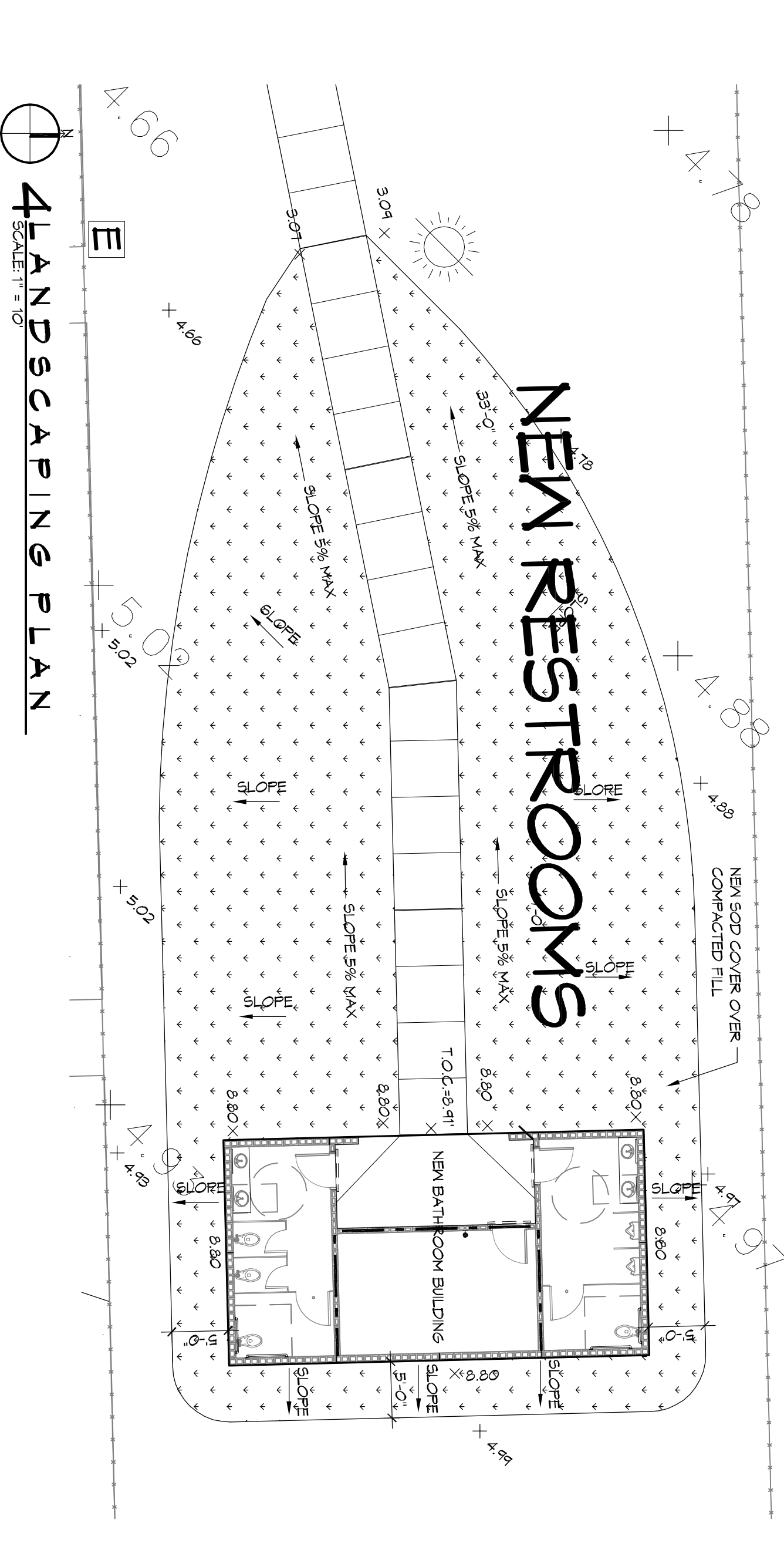
SCALE: TYPICAL CONCRETE SIDEWALK



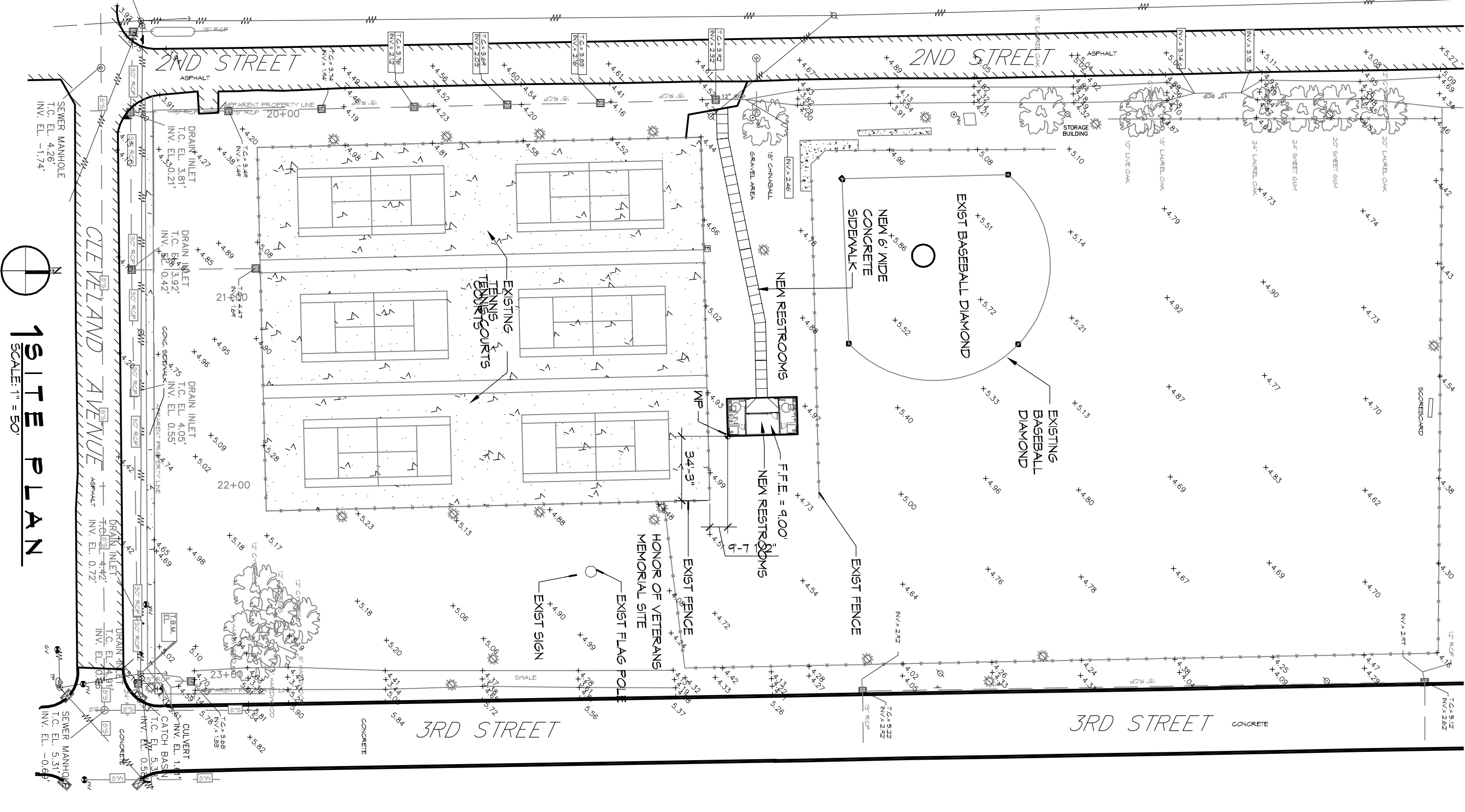
2 SITE PAVING & DRAINAGE PLAN



3 SITE UTILITIES PLAN



4 LANDSCAPING PLAN



1 SITE PLAN

SITE LEGEND

—	BUILDING OUTLINE
—	NEW WATER LINE
—	NEW SEWER LINE
—	NEW POWER LINE
—	DETECTABLE WARNING SYSTEM (CAST IN PLACE)

DRAINAGE

1. **NOTE:** THE SEWER PROPERTY LINE SHALL BE POLYVINYL CHLORIDE (PVC) PIPE WITH A 100' C-400 P/C.
2. ELEVATIONS SHOWN ARE VSL.
3. FIELD VERIFY ALL ELEVATIONS AND DRAINAGE SYSTEM PLACEMENT PRIOR TO START OF WORK.

DAMMON ENGINEERING, INC.
Architects & Engineers

Chief Architect: Kevin J. Kinchen, NCARB
Chief Engineer: Brian Mistich, PE
554 Old Spanish Trail
Slidell, LA 70458

www.dammonengineering.com
info@dammonengineering.com
PH: 985.649.5832
F: 985.641.5950

REVISIONS		DATE
#	DESCRIPTION	
1	RE-ROUTED UTILITY LINES	02-03-2015

CITY OF SLIDELL

TOWN OF SLIDELL

2602 2nd STREET
SLIDELL, LOUISIANA, 70458

JOB NO: 2170 DATE: 4/2/2014

DRAWN BY: KJK/JTL CHECKED BY: CKD

The above drawings, specifications, sheets and attachments represent hereby that we shall retain the property of Dammon Engineering, Inc. and shall not be used for any other project without our written consent. We shall not be responsible for any errors or omissions in these drawings or specifications. We shall not be responsible for any damage or destruction of property caused by the use of these drawings or specifications. We shall not be responsible for any delay or interruption of work caused by the use of these drawings or specifications. We shall not be responsible for any cost or expense incurred by the use of these drawings or specifications. We shall not be responsible for any liability or damages caused by the use of these drawings or specifications. We shall not be responsible for any other matter whatsoever.

SHEET TITLE:
SITE PLAN, SITE UTILITIES, DRAINAGE, PAVING PLAN, AND LANDSCAPING PLAN

DRAWING NUMBER:

61

SHEET NO: 4 OF 8