



CITYHALL PARKING LOT



SCALE : 1" = 40' - 0"

**Courtyard & Parking
Revised Schematic**

©2012 Eric R. McQuiston LLC

These drawings or parts thereof, may not be reproduced in any form, by any method, for any purpose without prior written consent from:
Eric R McQuiston LLC

Contact: Eric McQuiston 985-789-9468

Slidell City Hall
2045 2nd Street
Slidell, LA 70458

Eric R. McQuiston L.L.C.
Landscape Architecture

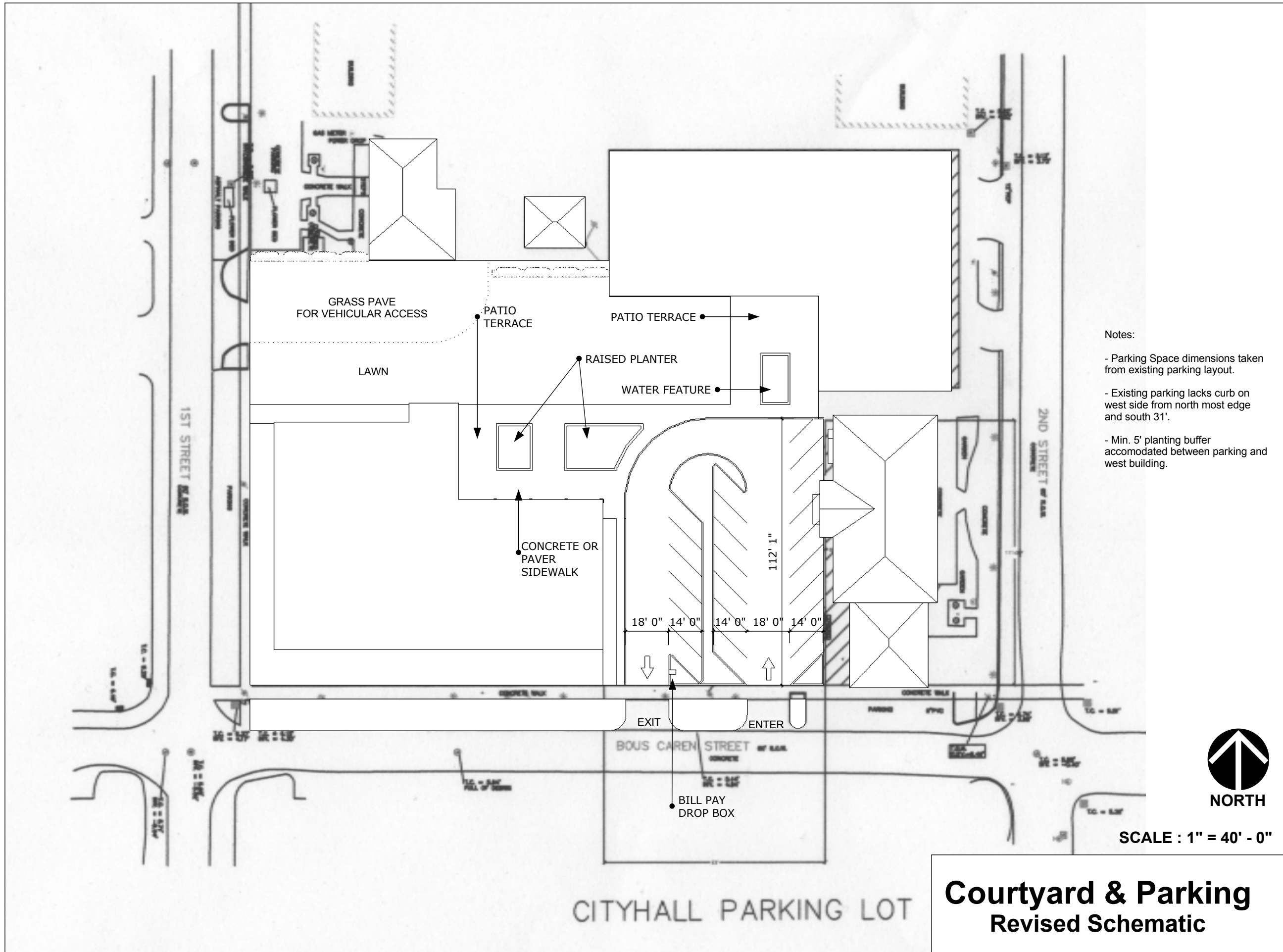
3534 Joyce drive Mandeville LA. 70448
985-789-9468 : www.ericmcquiston.com : ermcquiston@gmail.com

Drawn By: ERM

Date: 10 - 12 - 12

SHEET: 1 OF 3

S : 01



- Notes:
- Parking Space dimensions taken from existing parking layout.
 - Existing parking lacks curb on west side from north most edge and south 31'.
 - Min. 5' planting buffer accommodated between parking and west building.



SCALE : 1" = 40' - 0"

Courtyard & Parking
Revised Schematic

©2012 Eric R. McQuiston LLC
 These drawings or parts thereof, may not be reproduced in any form, by any method, for any purpose without prior written consent from:
 Eric R McQuiston LLC
 Contact: Eric McQuiston 985-789-9468

Slidell City Hall
 2045 2nd Street
 Slidell, LA 70458

Eric R. McQuiston L.L.C.
 Landscape Architecture

3534 Joyce drive Mandeville LA. 70448
 985-789-9468 : www.ericmcquiston.com : ermcquiston@gmail.com

Drawn By: ERM
 Date: 10 - 12 - 12

SHEET: 2 OF 3
S : 02



©2012 Eric R. McQuiston LLC

These drawings or parts thereof, may not be reproduced in any form, by any method, for any purpose without prior written consent from:
Eric R McQuiston LLC

Contact: Eric McQuiston 985-789-9468

Slidell City Hall
2045 2nd Street
Slidell, LA 70458

Eric R. McQuiston L.L.C.
Landscape Architecture

3534 Joyce drive Mandeville LA. 70448
985-789-9468 : www.ericmcquiston.com : ermquiston@gmail.com

Drawn By: ERM

Date: 10 - 12 - 12

SHEET: 3 OF 3

S : 03

Artistic Renderings
Not To Scale

Courtyard & Parking
Revised Schematic