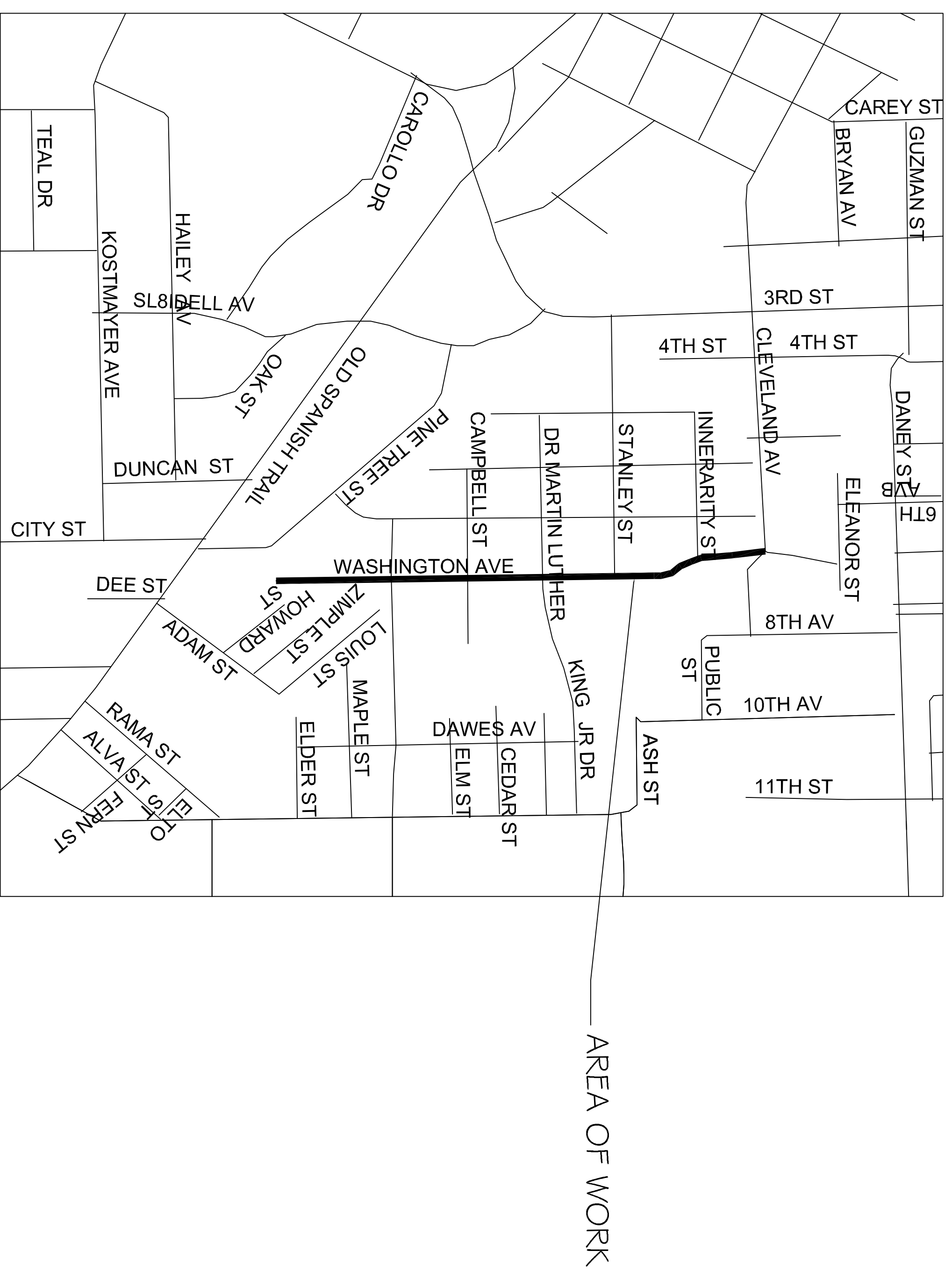


# CITY OF SLIDELL LOUISIANA CDBG SIDEWALK IMPROVEMENTS

## WASHINGTON AVENUE



VICINITY MAP  
N.T.S.



**Mayor Freddy Drennan**

Landon Cusimano	Councilor-At-Large
Kim Baronet Harbison	Councilor-At-Large
Lionel J. Hicks	District "A"
Samuel W. Abney	District "B"
Dwayne "Buddy" Lloyd	District "C"
Joseph H. Fraught	District "D"
Salvatore A. "Sam" Caruso	District "E"
Jay E. Newcomb	District "F"
Bill Borchert Jr.	District "G"

### SHEET INDEX

TITLE SHEET	SHEET INDEX
C-1 PARTIAL SITE PLAN WASHINGTON AVE	
C-2 PARTIAL SITE PLAN WASHINGTON AVE	
C-3 PARTIAL SITE PLAN WASHINGTON AVE	
C-4 PARTIAL SITE PLAN WASHINGTON AVE	

CITY OF SLIDELL, LA  
CDBG SIDEWALK IMPROVEMENTS  
CDBG PHASE V 5000-21B  
WASHINGTON AVE.  
SLIDELL, LOUISIANA

JOB No: 2204 DATE: 03.06.2013  
DRAWN BY: CKD CHECKED BY: CKD



**DAMMON**  
ENGINEERING, INC.  
Architects & Engineers

CHIEF ARCHITECT: KEVIN KINCHEN, NCARB  
554 OLD SPANISH TRAIL  
SLIDELL, LA 70458

dammonengineering.com  
dammoneng@bellsouth.net  
PHONE: 985-649-5832  
FAX: 985-641-5450

#### REVISIONS

#	DESCRIPTION	DATE

TITLE SHEET

SHEET No: 01 of 05

**CONCRETE MIX DESIGN**  
MIX FOR ONE CUBIC YARD OF FIBER-REINFORCED CONCRETE

28 DAY STRENGTH	4000 PSI
CEMENT (ASTM C-150, TYPE I/II)	4.64 BAGS (436 LBS.)
FLY ASH (ASTM C-618)	1.16 BAGS (104 LBS.)
GRAVEL (ASTM C-33, GRADE A)	1226 LBS.
SAND (ASTM C-33)	30 GALLONS (250 LBS.)
WATER (POTABLE)	16.35 LBS.
TYPE A WATER REDUCER (ASTM C-494)	5% BY VOLUME, USE PER MANUFACTURERS SPECIFICATIONS
AIR ENTRAINMENT	1.5 LBS./CY MICROFIBERS, AS SPECIFIED BELOW
FIBER REINFORCEMENT	

FIBER REINFORCEMENT FOR ALL CONCRETE SIDEWALKS AND DRIVEWAYS SHALL BE MATRIX MONOFILAMENT MICROFIBER AS MANUFACTURED BY FRC INDUSTRIES OR APPROVED EQUAL, APPLIED THROUGHOUT THE CONCRETE MIXTURE. ALTERNATE PRODUCTS MUST BE PRE-APPROVED BY THE CITY ENGINEER IN WRITING CELLULOSE (TREATED OR UNTREATED), AR GLASS, NYLON AND POLYESTER FIBERS ARE SPECIFICALLY PROHIBITED FROM USE.

CONTRACTOR SHALL FURNISH ALL MATERIALS, LABOR, AND EQUIPMENT NEEDED TO CONSTRUCT HANDICAP RAMPS. AT INTERSECTIONS, MEDIANS, OR AS DIRECTED BY THE CITY ENGINEER, THE CONCRETE USED TO CONSTRUCT THE RAMPS SHALL BE SIX (6") INCH THICK 4000-PSI AT 28 DAYS, WHERE NECESSARY OR AS DIRECTED BY THE CITY ENGINEER. EXISTING SIDEWALK SHALL BE REMOVED AND REPLACED WITH NEW PORTLAND CEMENT CONCRETE SIDEWALK AND TRUNCATED DOME TILE, AS STIPULATED ACCORDING TO AMERICAN DISABILITY ACT REQUIREMENT.

TRUNCATED DOME TILE SHALL BE MINIMUM 1/4-INCH THICK WITH EMBEDDED TRUNCATED DOMES, 3-INCHES ON CENTER THROUGH ENTIRE LENGTH OF TILE. TILE SURFACE SHALL BE COVERED WITH PROTECTIVE PLASTIC SHEETING. EACH HANDICAP RAMP SHALL CONSIST OF ONLY ONE TILE, WHICH SHALL BE ANCHORED INTO THE CONCRETE. THESE ARE A NO DIRECT PAY ITEM COLOR SHALL BE BRICK RED.

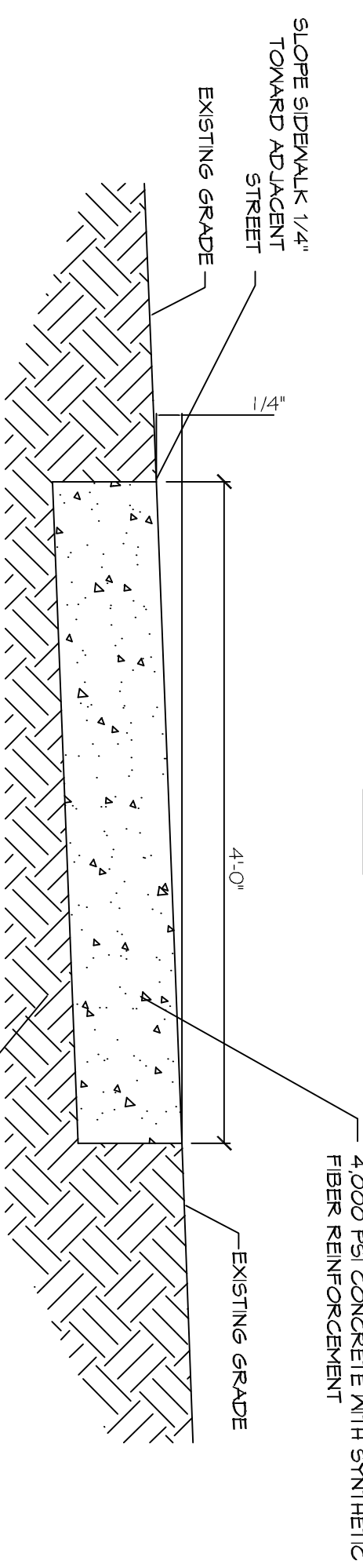
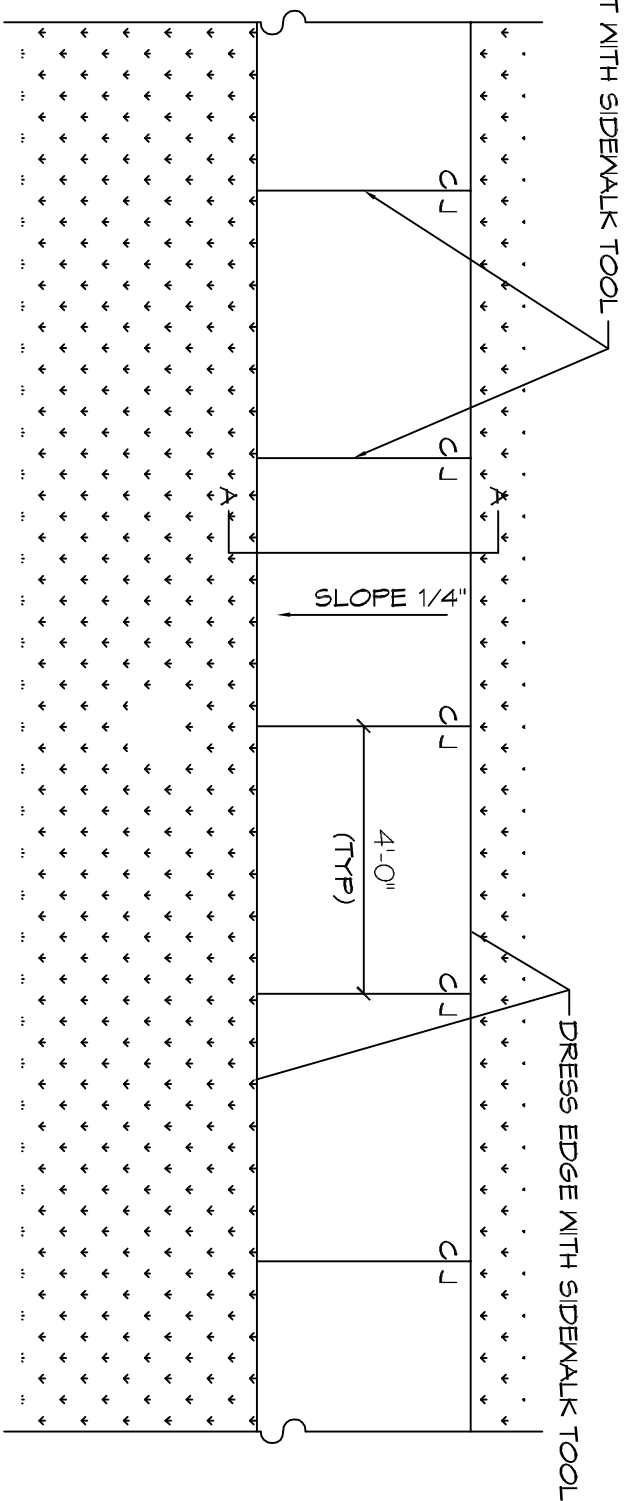
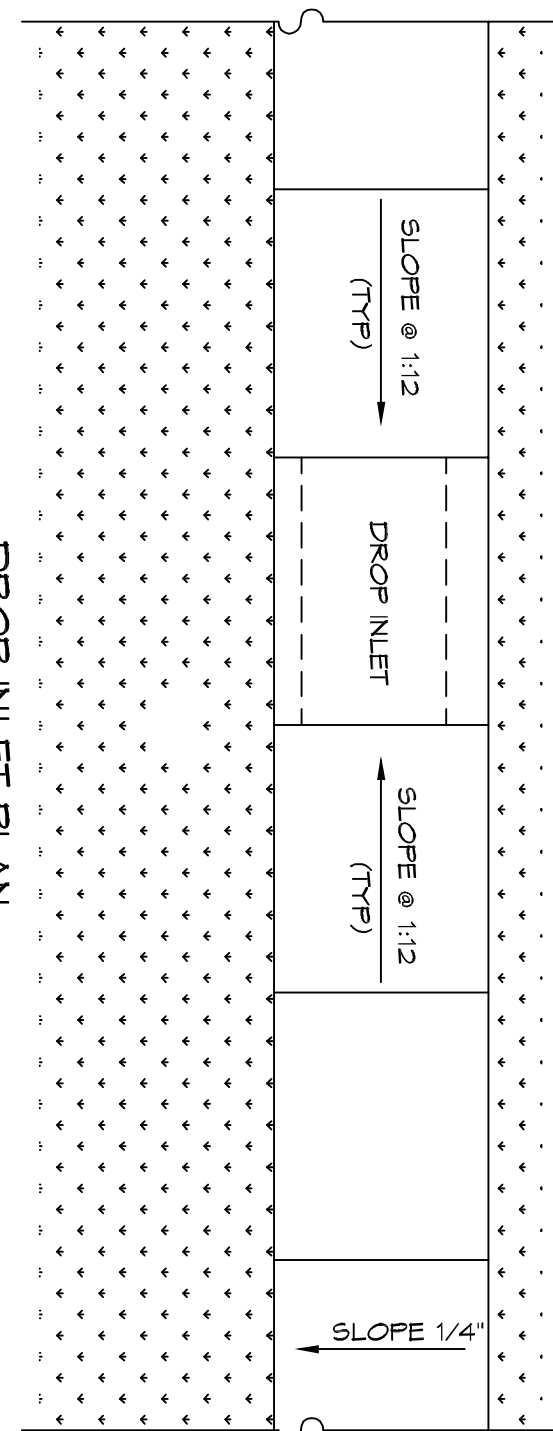
**NOTES:**

- 1) SIDEWALKS SHALL BE LOCATED AS NOTED. FIELD VERIFY WITH CITY ENGINEERING AND DAMMON ENGINEERING PRIOR TO FORMING.
  - 2) ALL SIDEWALKS SHALL BE PRELIMINARY LOCATE SIDEWALKS IS PERMITTED.
  - 3) SAND BASE COURSE (TYP) SHALL HAVE A MINIMUM OF 6" THICK COMPACTED TO 95% STANDARD PROCTOR.
  - 4) ALL SIDEWALKS SHALL BE SCORED TO A DEPTH OF 3/4" AT FIVE FOOT INTERVALS.
  - 5) ALL SIDEWALKS SHALL BE SLOPED 1/4" MAX CROSS SLOPE TO THE ADJACENT STREET OR DRIVEWAY.
  - 6) PROVIDE DETECTABLE WARNING SYSTEM (CAST IN PLACE) WHERE NEW SIDEWALKS TERMINATE INTO EXISTING STREETS AS NOTED.
- 1) ELEVATIONS SHOWN ARE M.S.L.  
2) FIELD VERIFY ALL ELEVATIONS AND DRAINAGE SYSTEM PLACEMENT PRIOR TO START OF WORK.

**TRAFFIC CONTROLS:**  
ANY WORK WITHIN THE ROADWAY OR ADJACENT TO THE ROADWAY CAUSING AN INTERFERENCE TO VEHICULAR TRAFFIC REQUIRES PRIOR APPROVAL FROM THE CITY OF SLIDELL, AND MUST CONFORM TO THE REQUIREMENTS SET FORTH BY THE MANUAL OF UNIFORM TRAFFIC CONTROL DEVICES. THE CONTRACTOR MUST FURNISH ALL NECESSARY TRAFFIC SIGNS AND/OR BARRICADES AND MAINTAIN THEM DURING CONSTRUCTION ACTIVITY.

**LEGEND**

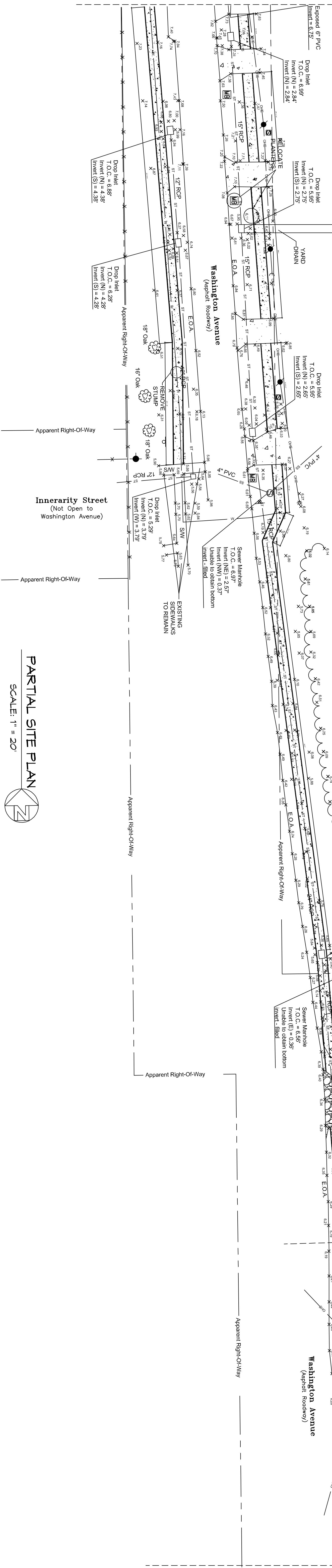
- EXISTING TOPO
- ALL SIDEWALKS INTERSECTING A ROADWAY SHALL BE SLOPED @ 1:12 AND HAVE A DETECTABLE WARNING SYSTEM (CAST IN PLACE) COLOR SHALL BE BRICK RED.
- NEW 4' SIDEWALK



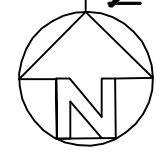
MATCH LINE - SEE THIS SHEET C-1

MATCH LINE - SEE THIS SHEET C-1

MATCH LINE - SEE SHEET C-2



**PARTIAL SITE PLAN**  
SCALE: 1" = 20'



**CITY OF SLIDELL, LA**  
**CDBG SIDEWALK IMPROVEMENTS**  
**CDBG PHASE V 5000-21B**  
WASHINGTON AVE.  
SLIDELL, LOUISIANA

JOB No:	2204	DATE:	03.06.2013
DRAWN BY:	KKD	CHECKED BY:	KKD

The above drawings and specifications designs and are prepared by the City of Slidell, Louisiana and no part thereof shall be copied, disclosed to others, or used in connection with any work or project other than the specific project for which they have been prepared. Any use of these drawings or specifications without the written consent of Dammon Engineering, Inc. shall constitute a violation of the professional seal and license of the engineer. Dammon Engineering, Inc. shall not be held responsible for any errors or omissions in these drawings or specifications shall constitute conclusive evidence of acceptance of these provisions.



**DAMMON**  
ENGINEERING, INC.  
Architects & Engineers

CHIEF ARCHITECT: KEVIN KINCHEN, NCARB  
554 OLD SPANISH TRAIL  
SLIDELL, LA 70458

dammonengineering.com  
dammoneng@bellsouth.net  
PHONE: 985-649-5832  
FAX: 985-641-5450

**PARTIAL**  
**SITE**  
**PLAN**  
**WASHINGTON AVE.**  
SHEET NO: 02 OF 05

**C1**

REVISIONS		DATE
#	DESCRIPTION	

**CONCRETE MIX DESIGN**  
MIX FOR ONE CUBIC YARD OF FIBER-REINFORCED CONCRETE

28 DAY STRENGTH	4000 PSI
CEMENT (ASTM C-150, TYPE I/II)	4.64 BAGS (436 LBS.)
FLY ASH (ASTM C-618)	1.16 BAGS (109 LBS.)
GRAVEL (ASTM C-33, GRADE A)	1715 LBS.
SAND (ASTM C-33)	1226 LBS.
MATER (POTABLE)	30 GALLONS (250 LBS.)
TYPE A WATER REDUCER (ASTM C-494)	16.35 LBS.
AIR ENTRAINMENT	5% BY VOLUME, USE PER MANUFACTURERS SPECIFICATIONS
FIBER REINFORCEMENT	1.5 LBS./CY MICROFIBERS, AS SPECIFIED BELOW

FIBER REINFORCEMENT FOR ALL CONCRETE SIDEWALKS AND DRIVEWAYS SHALL BE MATRIX MONOFILAMENT MICROFIBER AS MANUFACTURED BY FRC INDUSTRIES OR APPROVED EQUAL, APPLIED THROUGHOUT THE CONCRETE MIXTURE. ALTERNATE PRODUCTS MUST BE PREAPPROVED BY THE CITY ENGINEER. IN WETTING CELLULOSE (TREATED OR UNTREATED), AIR GLASS, NYLON AND POLYESTER FIBERS ARE SPECIFICALLY PROHIBITED FROM USE. CONTRACTOR SHALL FURNISH ALL MATERIALS, LABOR, AND EQUIPMENT NEEDED TO CONSTRUCT HANDICAP RAMPS, AT INTERSECTIONS, MEDIANS, OR AS DIRECTED BY THE CITY ENGINEER. THE CONCRETE USED TO CONSTRUCT THE RAMPS SHALL BE SIX (6) INCH THICK 4000-PSI AT 28 DAYS, WHERE NECESSARY OR AS DIRECTED BY THE CITY ENGINEER. EXISTING SIDEWALK SHALL BE REMOVED AND REPLACED WITH NEW PORTLAND CEMENT CONCRETE SIDEWALK AND TRUNCATED DOWE TILE, AS STIPULATED ACCORDING TO AMERICAN DISABILITY ACT REQUIREMENT. TRUNCATED DOME TILE SHALL BE MINIMUM 1/4-INCH THICK WITH EMBEDDED TRUNCATED DOWES, 3-INCHES ON CENTER THROUGH ENTIRE LENGTH OF TILE. TILE SURFACE SHALL BE COVERED WITH PROTECTIVE PLASTIC SHEETING. EACH HANDICAP RAMP SHALL CONSIST OF ONLY ONE TILE, WHICH SHALL BE ANCHORED INTO THE CONCRETE. THESE ARE A NO DIRECT PAY ITEM. COLOR SHALL BE BRICK RED.

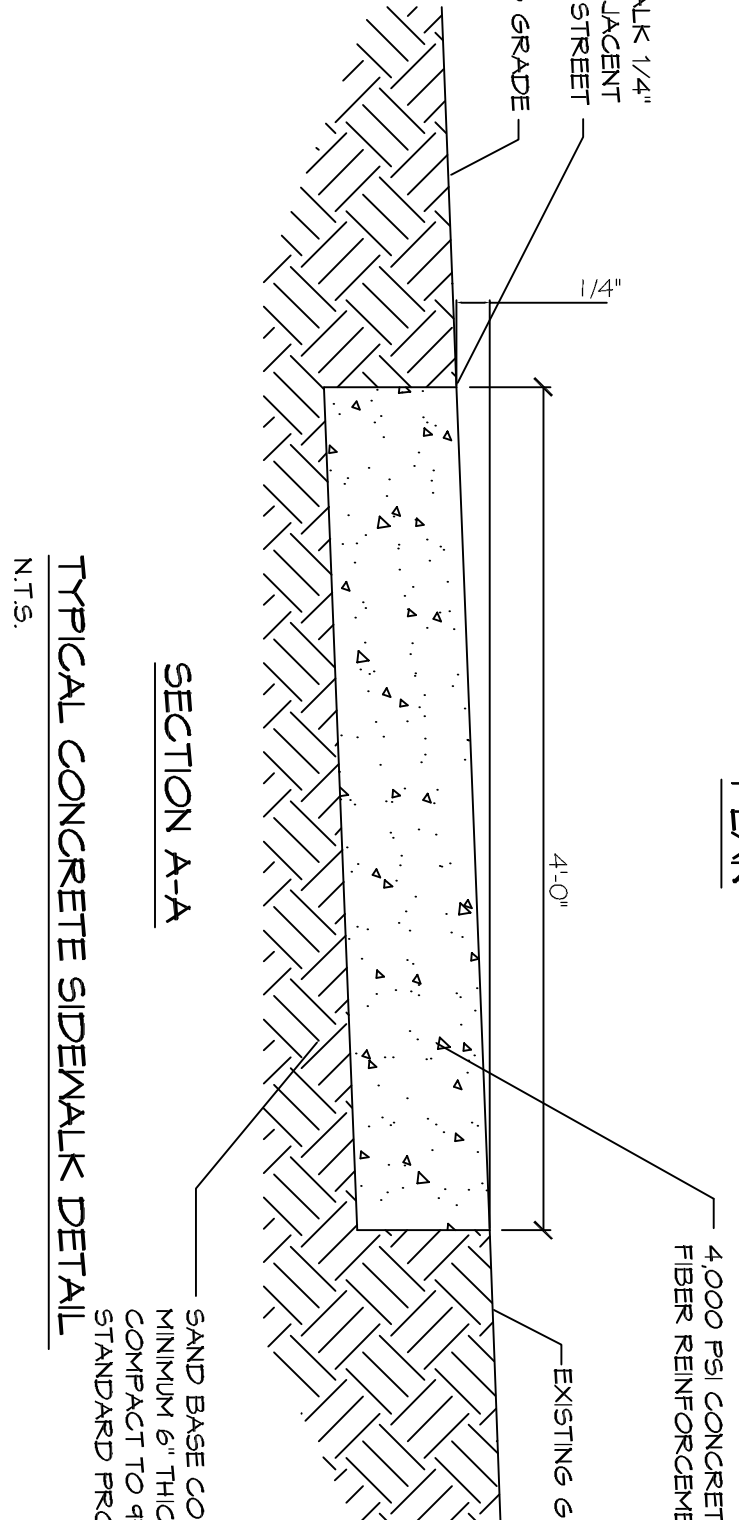
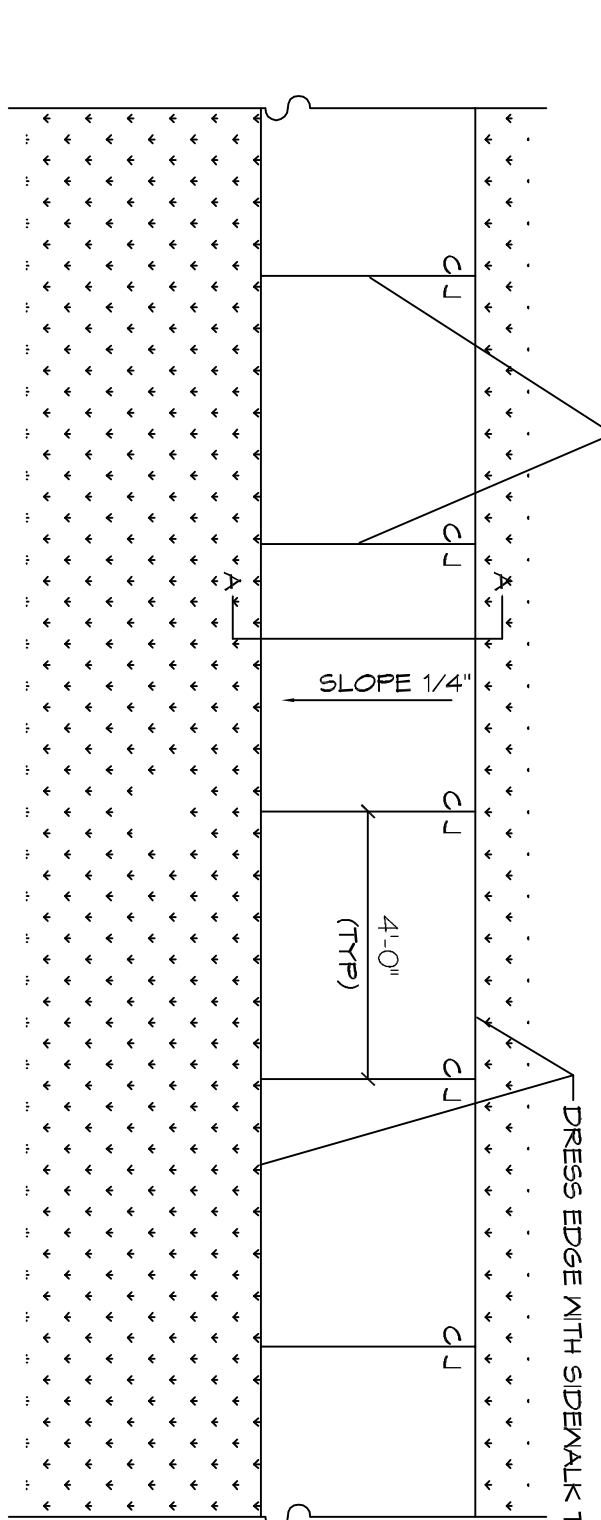
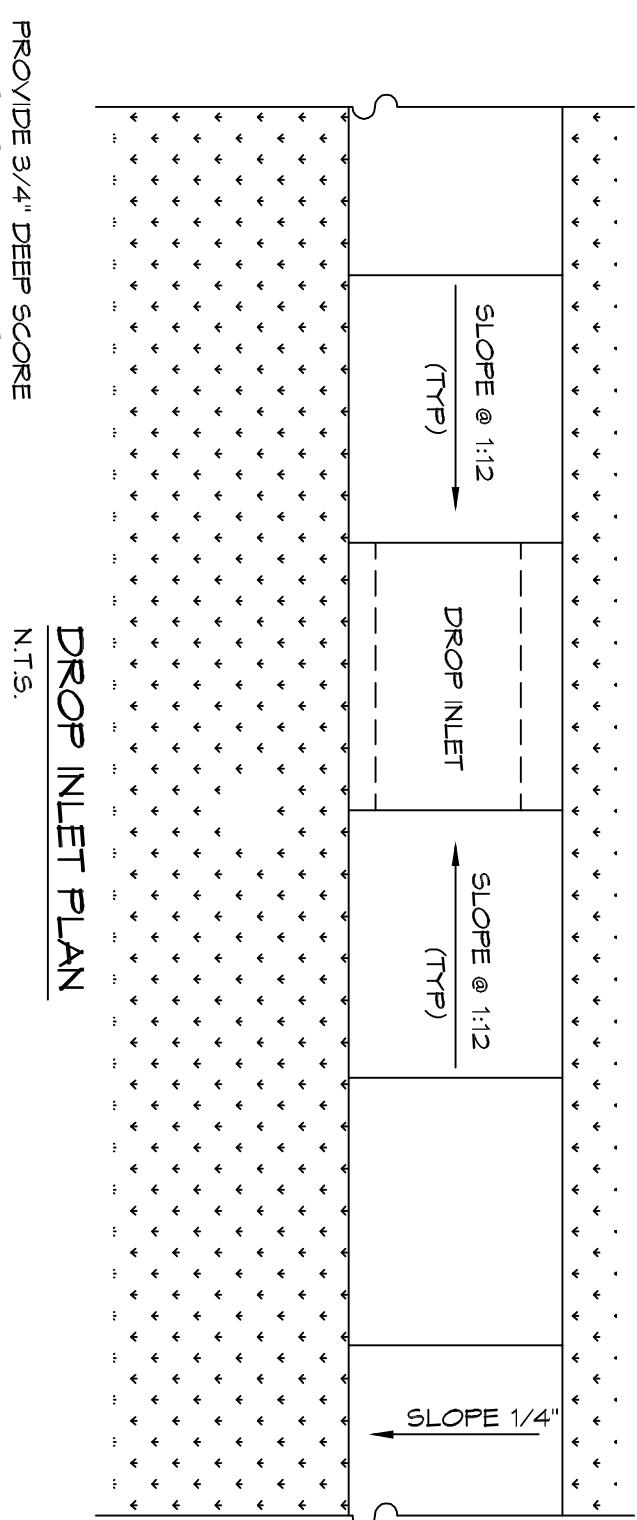
**NOTES:**

- 1) SIDEWALKS SHALL BE LOCATED AS NOTED. FIELD VERIFY WITH CITY ENGINEERING AND DAMMON ENGINEERING PRIOR TO FORMING.
  - 2) ALL SIDEWALKS TO PRELIMINARY LOCATE SIDEWALKS IS PERMITTED.
  - 3) SAND BASE COURSE (TYP.) SHALL HAVE A MINIMUM OF 6" THICK COMPACTED TO 95% STANDARD PROCTOR.
  - 4) ALL SIDEWALKS SHALL BE SLOPED TO A DEPTH OF 3/4" AT FIVE FOOT INTERVALS.
  - 5) ALL SIDEWALKS SHALL BE SLOPED 1/4" MAX CROSS SLOPE TO THE ADJACENT STREET OR DRIVEWAY.
  - 6) PROVIDE DETECTABLE MARKING SYSTEM (CAST IN PLACE) WHERE NEW SIDEWALKS TERMINATE INTO EXISTING STREETS AS NOTED.
- 1) ELEVATIONS SHOWN ARE M.S.L.  
2) FIELD VERIFY ALL ELEVATIONS AND DRAINAGE SYSTEM PLACEMENT PRIOR TO START OF WORK.

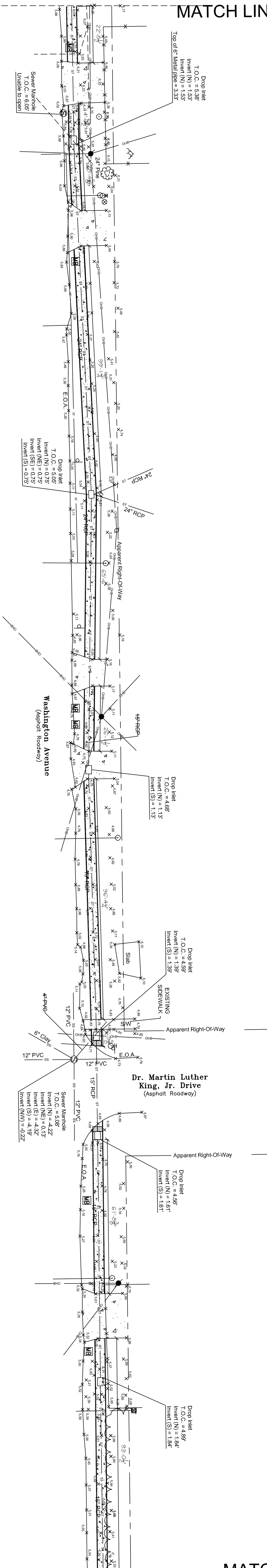
**TRAFFIC CONTROLS:**  
ANY WORK WITHIN THE ROADWAY OR ADJACENT TO THE ROADWAY CAUSING AN INTERFERENCE TO VEHICULAR TRAFFIC REQUIRES PRIOR APPROVAL FROM THE CITY OF SLIDELL, AND MUST CONFORM TO THE REQUIREMENTS SET FORTH BY THE MANUAL OF UNIFORM TRAFFIC CONTROL DEVICES. THE CONTRACTOR MUST FURNISH ALL NECESSARY TRAFFIC SIGNS AND/OR BARRICADES AND MAINTAIN THEM DURING CONSTRUCTION ACTIVITY.

**LEGEND**

- EXISTING TOPO
- ALL SIDEWALKS INTERSECTING A ROADWAY SHALL BE SLOPED @ 1:12 AND HAVE A DETECTABLE MARKING SYSTEM (CAST IN PLACE). COLOR SHALL BE BRICK RED.
- NEW 4' SIDEWALK

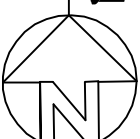


MATCH LINE - SEE SHEET C-1



MATCH LINE - SEE SHEET C-3

**PARTIAL SITE PLAN**  
SCALE: 1" = 20'



REVISIONS	
#	DESCRIPTION

CITY OF SLIDELL, LA CDBG SIDEWALK IMPROVEMENTS CDBG PHASE V 5000-21B	
WASHINGTON AVE. SLIDELL, LOUISIANA	
JOB No:	2204
DATE:	03.06.2013
DRAWN BY:	CKD
CHECKED BY:	CKD

**DAMMON**  
ENGINEERING, INC.  
*Architects & Engineers*

dammonengineering.com  
dammoneng@bellsouth.net  
PHONE: 485-649-5832  
FAX: 485-641-5450

CHIEF ARCHITECT: KEVIN KINCHEN, NCARB  
554 OLD SPANISH TRAIL  
SLIDELL, LA 70458

**PARTIAL SITE PLAN**  
WASHINGTON AVE.  
SHEET NO: 03 OF 05

02

**CONCRETE MIX DESIGN**  
MIX FOR ONE CUBIC YARD OF FIBER-REINFORCED CONCRETE

28 DAY STRENGTH	4000 PSI
CEMENT (ASTM C-150, TYPE I/II)	4.64 SACKS (436 LBS.)
FLY ASH (ASTM C-618)	1.16 SACKS (104 LBS.)
GRAVEL (ASTM C-39, GRADE A)	17.75 LBS.
SAND (ASTM C-39)	1226 LBS.
WATER (POTABLE)	30 GALLONS (250 LBS.)
TYPE A WATER REDUCER (ASTM C-494)	16.35 LBS.
AIR ENTRAINMENT SPECIFICATIONS	5% BY VOLUME, USE PER MANUFACTURERS
FIBER REINFORCEMENT	1.5 LBS./CY MICROFIBERS, AS SPECIFIED BELOW

FIBER REINFORCEMENT FOR ALL CONCRETE SIDEWALKS AND DRIVEWAYS SHALL BE MATRIX NONREINFORCEMENT MICROFIBER AS MANUFACTURED BY FRC INDUSTRIES OR APPROVED EQUAL, APPLIED THROUGHOUT THE CONCRETE MIXTURE. ALTERNATE PRODUCTS MUST BE PREAPPROVED BY THE CITY ENGINEER. ALTERNATE PRODUCTS MUST BE PREAPPROVED BY THE CITY ENGINEER IN WRITING. CELLULOSE (TREATED OR UNTREATED), AIR GLASS, NYLON AND POLYESTER FIBERS ARE SPECIFICALLY PROHIBITED FROM USE. CONTRACTOR SHALL FINISH ALL MATERIALS, LABOR, AND EQUIPMENT NEEDED TO CONSTRUCT HANDICAP RAMPS, AT INTERSECTIONS, MEDIANS, OR AS DIRECTED BY THE CITY ENGINEER. THE CONCRETE USED TO CONSTRUCT THE RAMPS SHALL BE SIX (6") THICK 4000-PSI. AT 28 DAYS, WHERE NECESSARY OR AS DIRECTED BY THE CITY ENGINEER, EXISTING SIDEWALK SHALL BE REMOVED AND REPLACED WITH NEW PORTLAND CONCRETE SIDEWALK AND TRUNCATED DOME TILE, AS STIPULATED ACCORDING TO AMERICAN DISABILITY ACT REQUIREMENT. TRUNCATED DOME TILE SHALL BE MINIMUM 1/4" THICK WITH EMBEDDED TRUNCATED DOME, 3-INCHES ON CENTER THROUGH ENTIRE LENGTH OF TILE. TILE SURFACE SHALL BE COVERED WITH PROTECTIVE PLASTIC SHEETING. EACH HANDICAP RAMP SHALL CONSIST OF ONLY ONE TILE WHICH SHALL BE ANCHORED INTO THE CONCRETE. THESE ARE A NO DIRECT PAY ITEM. COLOR SHALL BE BRICK RED.

**NOTES:**

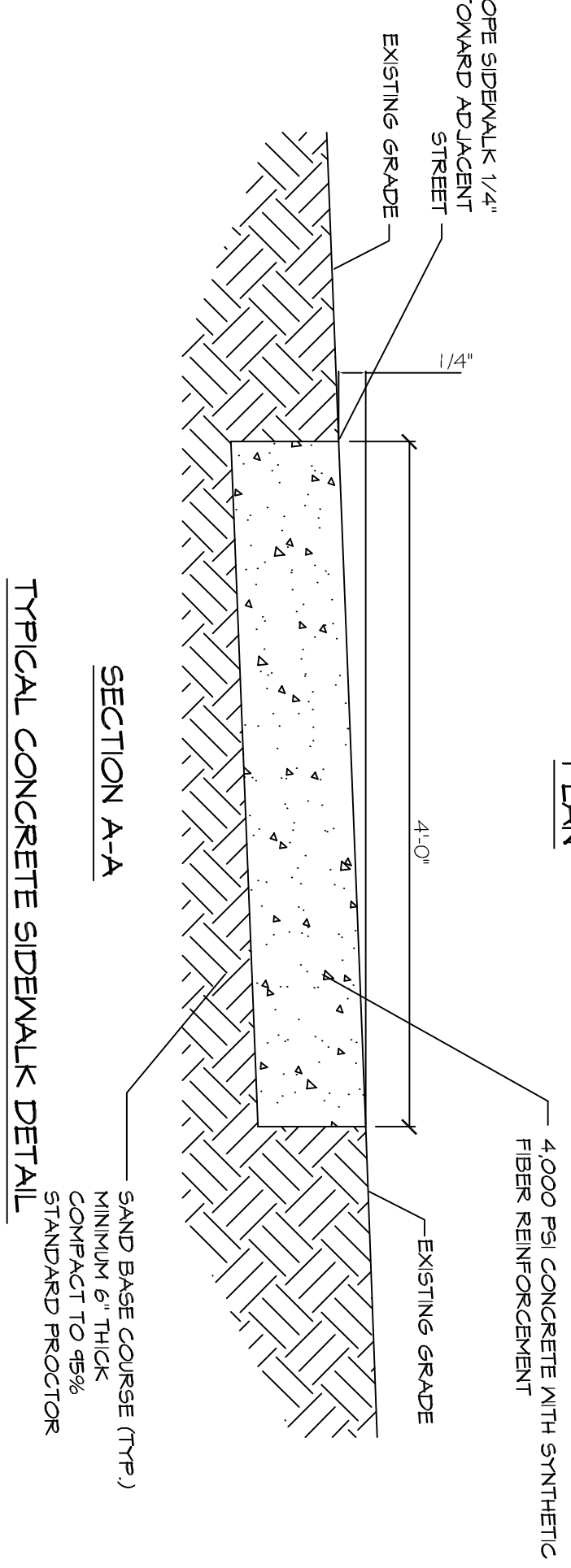
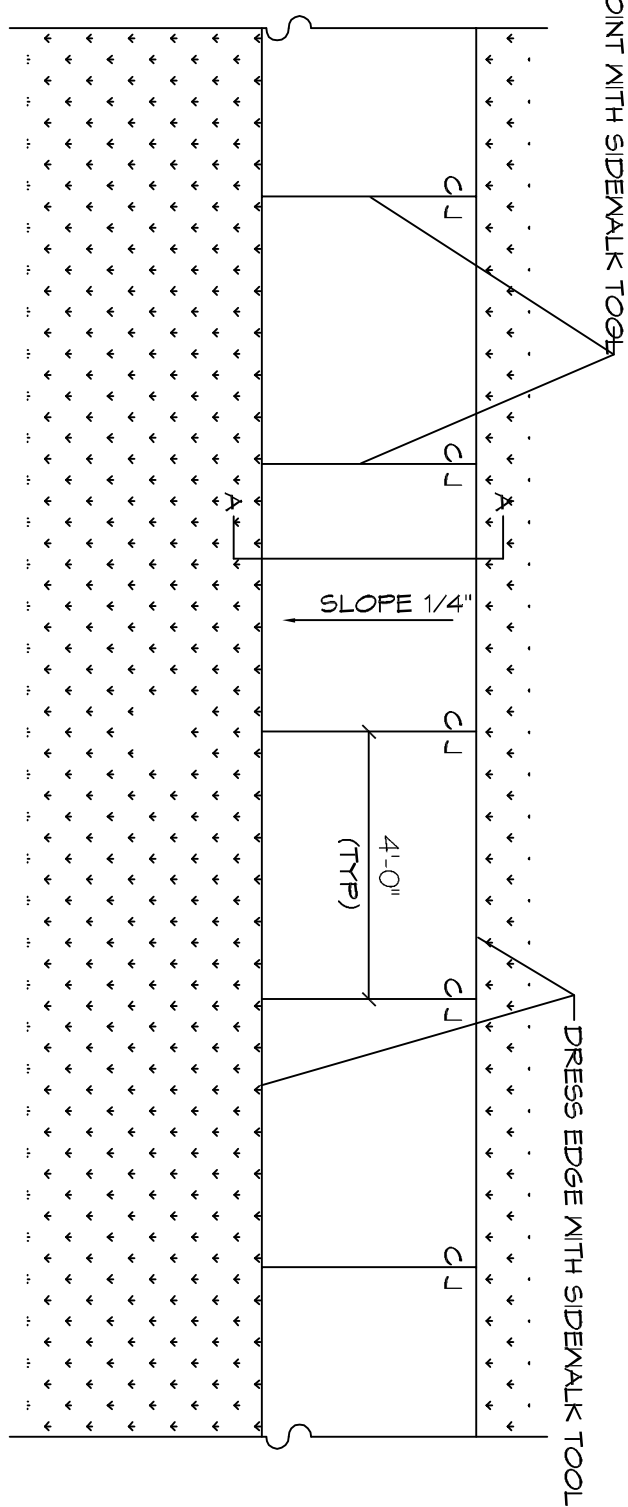
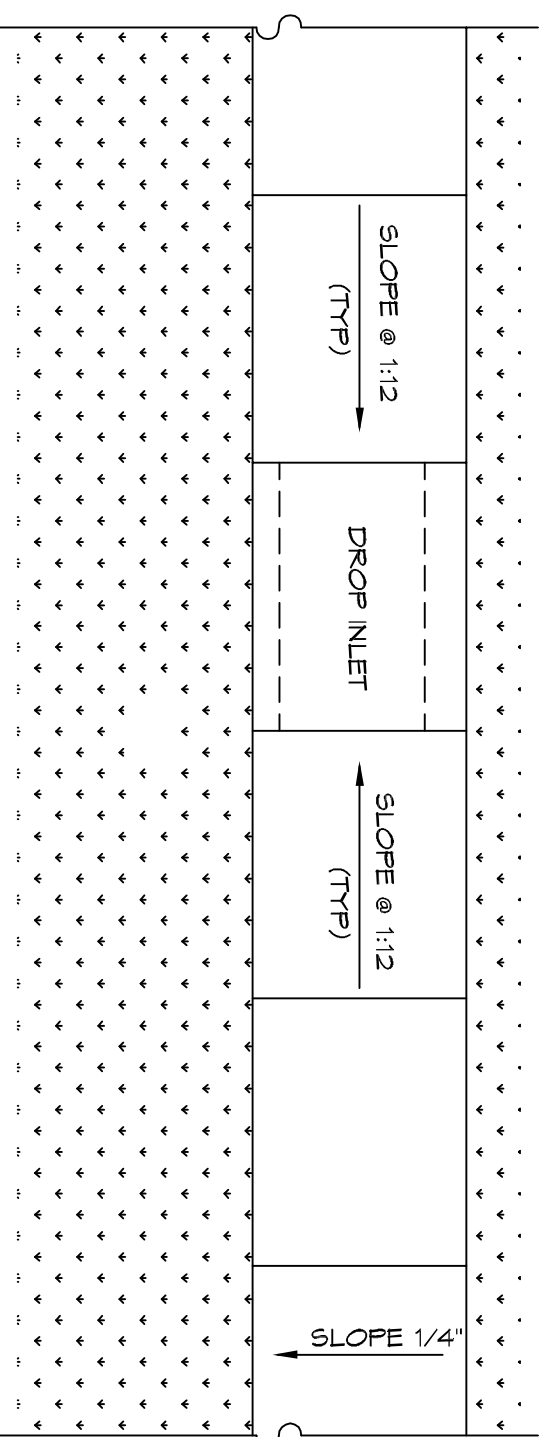
- 1) SIDEWALKS SHALL BE LOCATED AS NOTED. FIELD VERIFY WITH CITY ENGINEERING AND DAMMON ENGINEERING PRIOR TO FORMING. SCALING DIMENSION TO PRELIMINARY LOCATE SIDEWALKS IS PERMITTED.
- 2) ALL SIDEWALKS SHALL BE CONSTRUCTED OF PORTLAND CEMENT CONCRETE AND HAVE A MINIMUM THICKNESS OF 4".
- 3) SAND BASE COURSE (TYP.) SHALL HAVE A MINIMUM OF 6" THICK COMPACTED TO 95% STANDARD PROCTOR.
- 3) PROVIDE SYNTHETIC FIBER REINFORCING IN ACCORDANCE WITH ASTM C 1116 IN ALL CONCRETE SIDEWALKS.
- 4) ALL SIDEWALKS SHALL BE SCORED TO A DEPTH OF 3/4" AT FIVE FOOT INTERVALS.
- 5) ALL SIDEWALKS SHALL BE SLOPED 1/4" MAX CROSS SLOPE TO THE ADJACENT STREET OR DRIVEWAY.
- 6) PROVIDE DETECTABLE MARKING SYSTEM (CAST IN PLACE) WHERE NEW SIDEWALKS TERMINATE INTO EXISTING STREETS AS NOTED.
- 7) ELEVATIONS SHOWN ARE M.S.L.
- 8) FIELD VERIFY ALL ELEVATIONS AND DRAINAGE SYSTEM PLACEMENT PRIOR TO START OF WORK.

**TRAFFIC CONTROLS:**

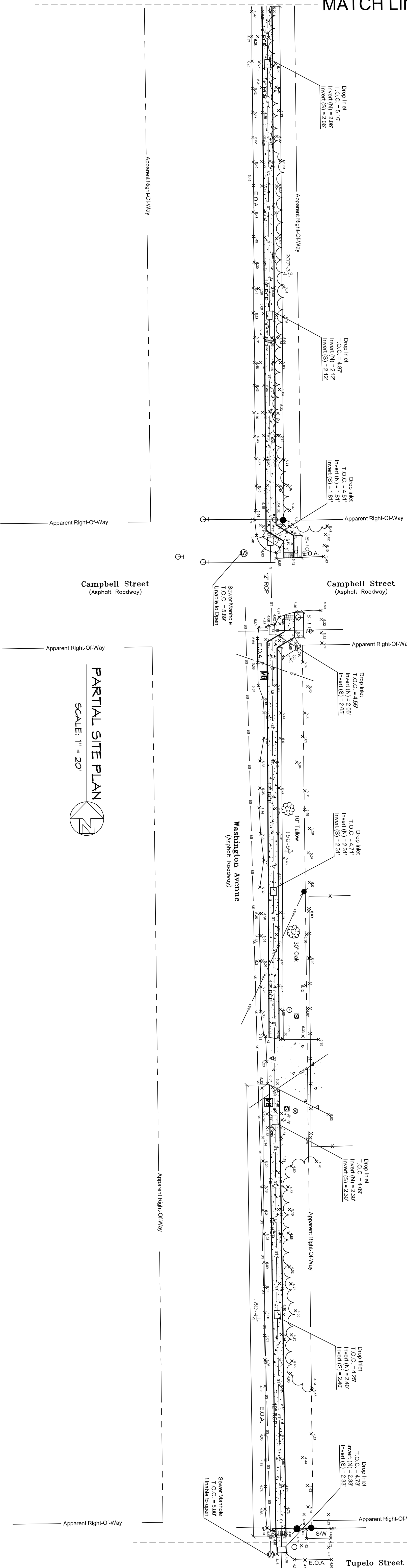
ANY WORK WITHIN THE ROADWAY OR ADJACENT TO THE ROADWAY CAUSING AN INTERFERENCE TO VEHICULAR TRAFFIC REQUIRES PRIOR APPROVAL FROM THE CITY OF SLIDELL, AND MUST CONFORM TO THE REQUIREMENTS SET FORTH BY THE MANUAL OF UNIFORM TRAFFIC CONTROL DEVICES. THE CONTRACTOR MUST FURNISH ALL NECESSARY TRAFFIC SIGNS AND/OR BARRICADES AND MAINTAIN THEM DURING CONSTRUCTION ACTIVITY.

**LEGEND**

- EXISTING TOPO
- ALL SIDEWALKS INTERSECTING A ROADWAY SHALL BE SLOPED @ 1:12 AND HAVE A DETECTABLE MARKING SYSTEM (CAST IN PLACE) COLOR SHALL BE BRICK RED.
- NEW 4" SIDEWALK



MATCH LINE - SEE THIS SHEET C-2



**PARTIAL SITE PLAN**  
SCALE: 1" = 20'

MATCH LINE - SEE SHEET C-4

**DAMMON ENGINEERING, INC.**  
Architects & Engineers

CHIEF ARCHITECT: KEVIN KINCHEN, NCARB  
554 OLD SPANISH TRAIL  
SLIDELL, LA 70458

dammonengineering.com  
dammoneng@bellsouth.net  
PHONE: 485-644-5832  
FAX: 485-641-5490

CITY OF SLIDELL, LA CDBG SIDEWALK IMPROVEMENTS CDBG PHASE V 5000-21B WASHINGTON AVE. SLIDELL, LOUISIANA	
JOB No: 2204	DATE: 03.06.2013
DRAWN BY: CKD	CHECKED BY: CKD

#	DESCRIPTION	DATE

**PARTIAL SITE PLAN**  
WASHINGTON AVE.

SHEET NO: 04 OF 05

**CEB**

