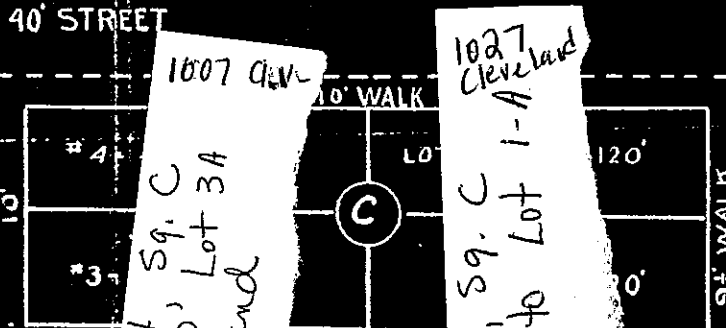
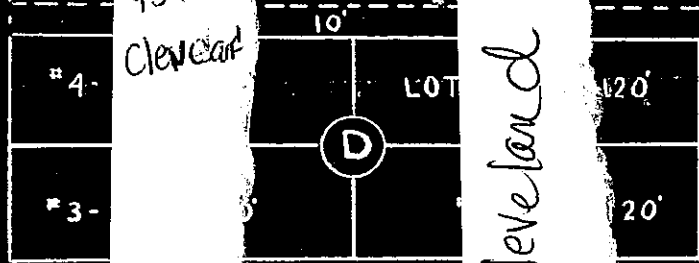
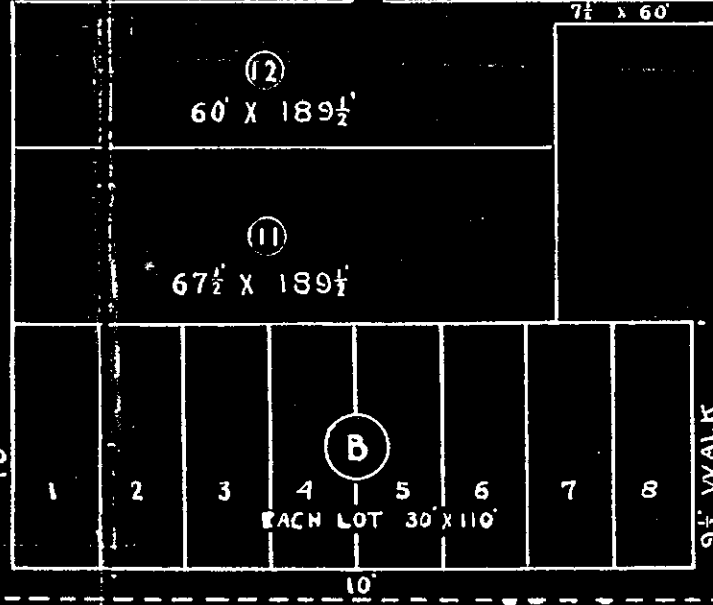
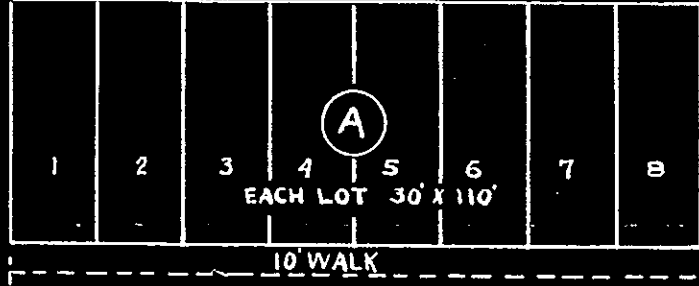


N.W. COR. OF PRD. OF
L. IMMURITY C.O.B. 46-326
AND IS 549.5 WEST TO
THE N.W. COR. OF THE
N.E. 1/4 OF SEC. 15- 9-14

3

60' X 120'

NORTH
→



951
Cleveland

955 Cleveland

1007 Clev.
Lots 3 + 4, Sq. C
resubbed to Lot 3A
1007 Cleveland

1027
Cleveland
Lots 1 + 2, Sq. C
resubbed to Lot 1-A

PROPERTY OF MR. JAMES
LIDELL - 9TH WARD
S. R. 14E. ST. TAMMANY PARISH