

LEGEND

- BUILDING
- BASELINE
- EXISTING RIGHT OF WAY
- CATCH BASIN
- CULVERT
- DROP INLET, DRAIN LINE
- DROP INLET, DRAIN LINE
- COMMUNICATIONS MANHOLE, COMM. LINE
- DRAIN MANHOLE, DRAIN LINE
- ELECTRICAL MANHOLE, ELEC. LINE
- GAS MANHOLE, GAS LINE
- SEWER MANHOLE, SEWER LINE
- TELEPHONE MANHOLE, TELE LINE
- TRAFFIC MANHOLE, TRAFFIC LINE
- WATER MANHOLE, WATER LINE
- UTILITY POLE / OVERHEAD LINES
ELECTRIC, TELEPHONE, CABLE TV
- ELEC TOWER / OVERHEAD LINES
- FENCE
- UTILITY BOX
- UTILITY CLEANOUT
- UTILITY METER
- UTILITY PEDESTAL
- UTILITY VALVE
- FIRE HYDRANT
- LIGHT STANDARD
- TRAFFIC LIGHT
- SIGN
- RESIDENTIAL MAILBOX
- TREE
- PP DEADMAN
- GAS RISER
- PIPE BOLLARD
- SEWER CLEANOUT
- FLAG POLE
- PIPELINE MARKER
- POWER DROP

SURVEY REFERENCE:

RESUBDIVISION OF A PORTION OF LOTS 1 THRU 14, OLD SQUARE 16, INTO LOTS 1-A AND 2-A, SQUARE 16-A, LOCATED IN THE CITY OF SLIDELL, SECTION 10, T-9-S, R-14-E, ST. TAMMANY, LA BY R.P. FONTCUBERTA, P.L.S., DATED DECEMBER 6, 1993.

The Servitudes and Restrictions shown on this survey are limited to those set forth in the description furnished us and there is no representation that all applicable Servitudes and Restrictions are shown hereon. The surveyor has made no title search or public record search in compiling the data for this survey.

I have consulted the Federal Insurance Administration Flood Hazard Boundary Maps and found this property is in a Special Flood Hazard Area.

FIRM ZONE: A4
BASE FLOOD ELEV. = 9.0' N.A.V.D. 88

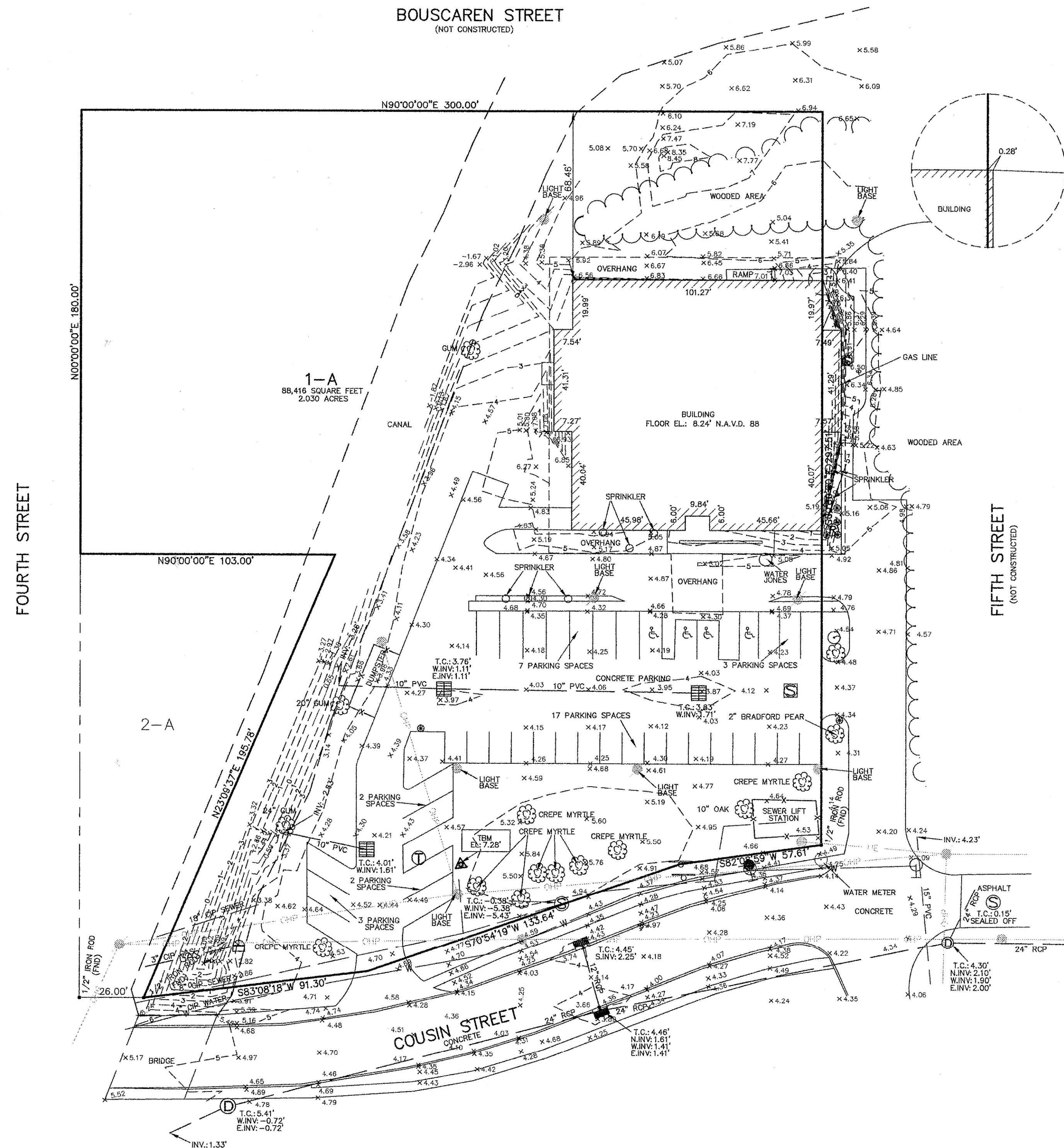
GENERAL NOTES

THE LOCATIONS OF UNDERGROUND AND OTHER NONVISIBLE UTILITIES SHOWN HEREON HAVE BEEN DETERMINED FROM DATA EITHER FURNISHED BY THE AGENCIES CONTROLLING SUCH DATA AND/OR EXTRACTED FROM RECORDS MADE AVAILABLE TO US BY THE AGENCIES CONTROLLING SUCH RECORDS. WHERE FOUND, THE SURFACE FEATURES OF LOCATIONS ARE SHOWN. THE ACTUAL NONVISIBLE LOCATIONS MAY VARY FROM THOSE SHOWN HEREON. EACH AGENCY SHOULD BE CONTACTED RELATIVE TO THE PRECISE LOCATION OF ITS UNDERGROUND INSTALLATION PRIOR TO ANY RELIANCE UPON THE ACCURACY OF SUCH LOCATIONS SHOWN HEREON, INCLUDING PRIOR TO EXCAVATION AND DIGGING.

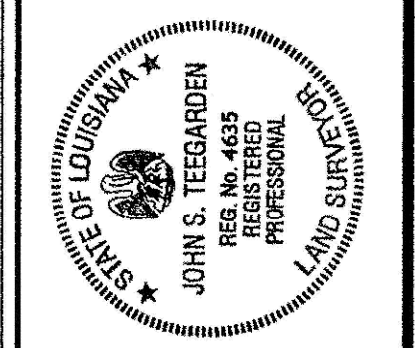
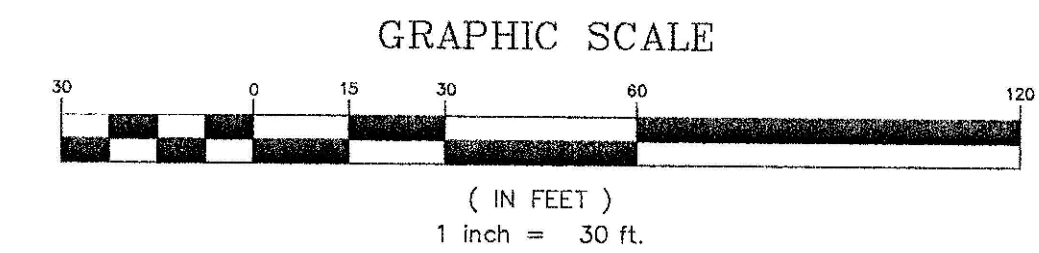
ALL ELEVATIONS SHOWN REFER TO N.A.V.D.
N.A.V.D. = NORTH AMERICAN VERTICAL DATUM

REFERENCE B.M. = 52 V 075
ELEVATION = 10.6' N.A.V.D. 88

TBM = SET BENCH TIE IN EAST FACE OF WOOD POWER POLE 175± WEST OF FIFTH STREET AND 45± NORTH OF COUSIN STREET.
ELEVATION = 7.28' N.A.V.D. 88



THIS SURVEY IS PROVIDED FOR INFORMATION ONLY. THIS SURVEY IS PROVIDED BY BFM CORPORATION, L.L.C. FOR THE CITY OF SLIDELL. IT IS THE CONTRACTORS RESPONSIBILITY TO VERIFY ALL CONDITIONS.



John S. Teegarden
REGISTERED PROFESSIONAL LAND SURVEYOR
REGISTRATION NO. 4635

BFM
CORPORATION, L.L.C.
Professional Land Surveyors
534 WILLIAMS BUILDING
1000 PINE ST. SUITE 200
SLIDELL, LA 70458
E-mail: bfm@bfmcorporation.com
Phone: (504) 887-0085
Fax: (504) 887-0085
JEFFERSON PARISH, LOUISIANA, 70482

BOUNDARY & TOPOGRAPHIC SURVEY
SLIDELL SENIOR CITIZENS CENTER
LOT 1-A, SQUARE 16-A
CITY OF SLIDELL, SECTION 10, T-9-S, R-14-E
ST. TAMMANY PARISH, LOUISIANA

I certify that this plat represents an actual ground survey made by me or under my direction, and it is based on Louisiana Administrative Code Title 48:151, Chapter 28, for a Class C Survey.

MARK	DESCRIPTION	DATE	BY	CR'D

SCALE:	1" = 30'
DATE:	APRIL 24, 2009
DRAWN BY:	R.A.H.
CHECKED BY:	J.S.T.
PROJECT NO.	6721
SHEET	OF