

| | ACTUAL | |
|---|------------|------------|
| | TOTAL S.F. | TOTAL S.M. |
| 0 | 5,200 | 483.10 |
| 1 | 2,401 | 223.10 |
| 7 | 1,456 | 135.27 |
| | 240 | 22.30 |
| | 198 | 18.40 |
| | 122 | 11.33 |
| | 799 | 74.23 |
| | 1,080 | 98.48 |
| 2 | 11,476 | 1066.16 |
| | 1.09 | 1.09 |
| 5 | 12,502 | 1161.47 |

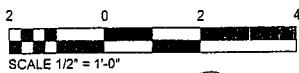
- NOTES:
1. LEE ON AN CO EXI FAC
 2. LEE ON AN CO EXI FAC

2

3

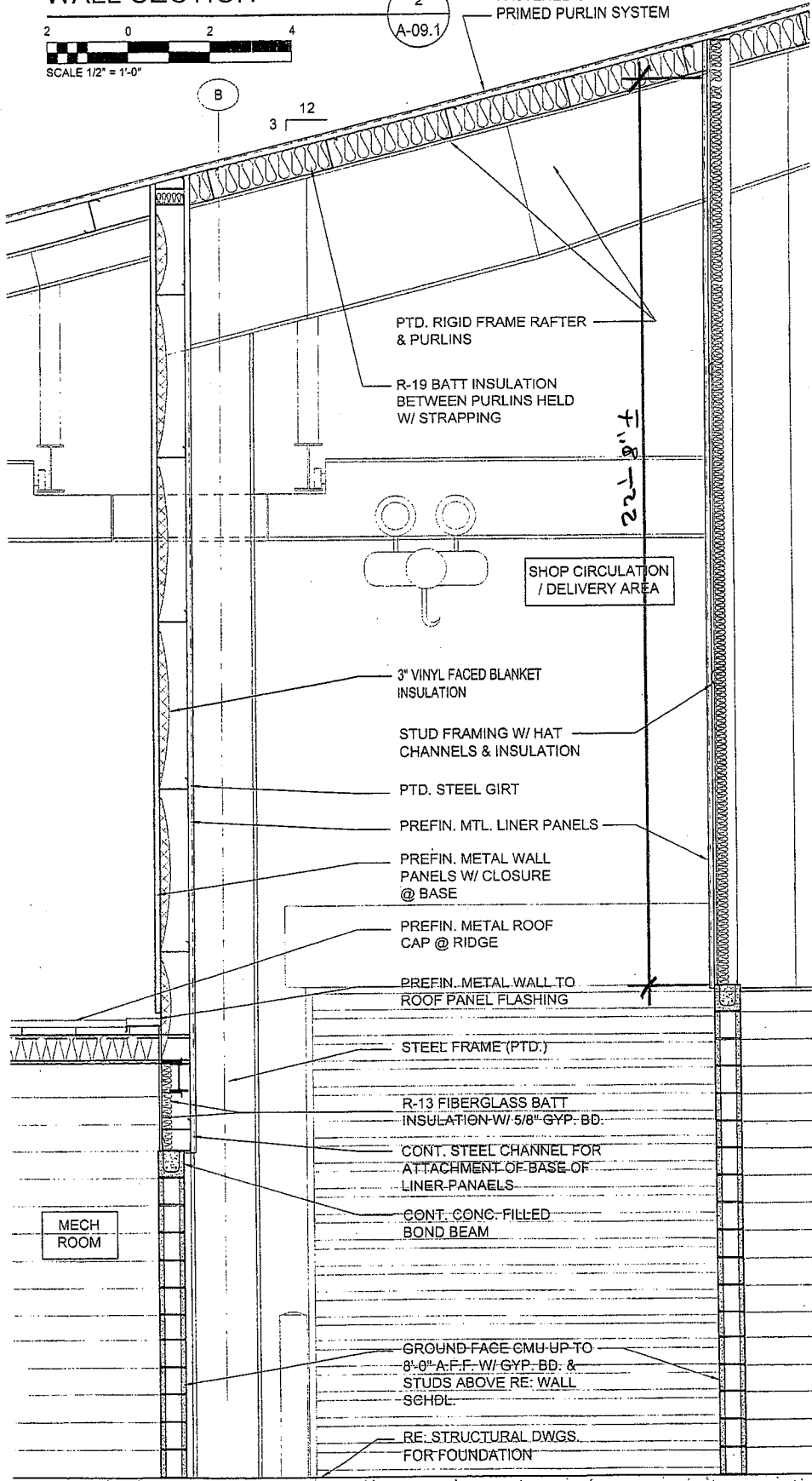
4

WALL SECTION

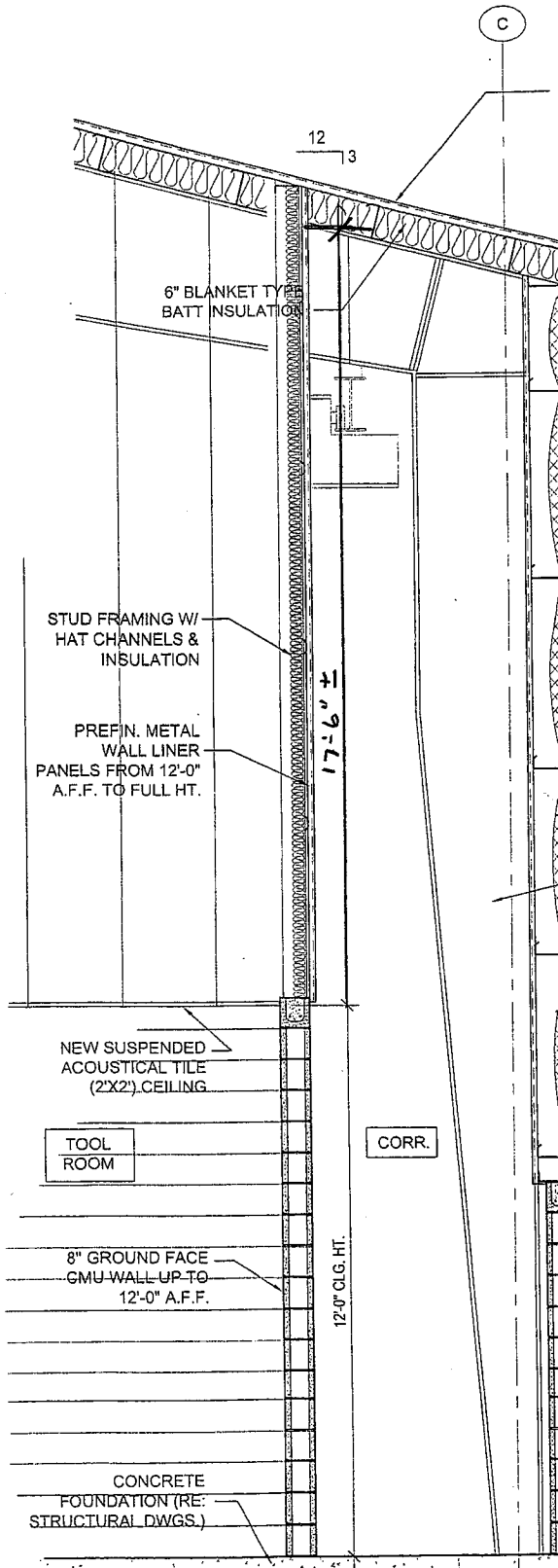
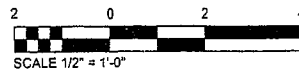


2
A-09.1

PREFIN. STANDING SEAM METAL
ROOF PANLS W/ CONCEALED
FASTENED CLIPS ON PRE-ENG.
PRIMED PURLIN SYSTEM



WALL SECTION



WALL SCHEDULE

| MARK | DESCRIPTION | THICKNESS (NOMINAL) |
|------|--|---------------------|
| 1 | 8"x8"x16" (NOM.) GROUND FACED CONCRETE MASONRY UNIT (INTERIOR SIDE) W/ HORIZ. REINFORCING @ EVERY SECOND COURSE; W/ NO. 5 VERT. RE-BAR @ 32" HORIZ. THE VERT. REINFORCING TO SLAB AND BOND BEAM REIN. (RE: STRUCT. FOR LOCATION OF BOND BEAMS); W/ 2" AIR SPACE & SELF ADHERING WATERPROOF MEMBRANE ON CMU W/ 2" POLYISO. BD., 4" (NOM.) GROUND FACED CONCRETE MASONRY UNIT VENEER (EXTERIOR SIDE) (ALL UP TO 8'-0" A.F.F.) (FABRIC FLASHING & WEEP HOLES AT BASE OF WALL) W/ PRE-ENG. COMPONENTS ABOVE W/ PREFIN. MTL. EXTERIOR WALL PANELS AND PREFIN. MTL. LINER PANELS TO UNDERSIDE OF ROOF W/ 3" VINYL FACED BLANKET INSULATION BETWEEN PANELS. | 15 1/4" |
| 2 | 8"x8"x16" (NOM.) GROUND FACED CONCRETE MASONRY UNIT (INTERIOR SIDE) W/ HORIZ. REINFORCING @ EVERY SECOND COURSE; W/ NO. 5 VERT. RE-BAR @ 32" HORIZ. THE VERT. REINFORCING TO SLAB AND BOND BEAM REIN.; OTHER CELLS FILLED WITH SPRAY FOAM POLYURETHANE INSULATION; SHOP SIDE COATED WITH CLEAR WATER REPELLENT (SEE SPECS); (RE: STRUCT. FOR LOCATION OF BOND BEAMS) (UP 12'-0" A.F.F.); W/ 6" METAL STUDS (20 GA. MIN.) (RE: NOTE 3) @ 16" O.C. ABOVE (BRACE AS REQ'D.); (FULL HT.); W/ R-13 UNFACED BATT INSULATION; W/ MTL. HAT CHANNELS @ 4'-0" o.c. VERT. SPACING FOR PREFIN. MTL. LINER PANELS ON EXTERIOR SIDE OF WALL TO UNDERSIDE OF ROOF | 7 5/8" |
| 3 | 8"x8"x16" (NOM.) GROUND FACED CONCRETE MASONRY UNIT (INTERIOR SIDE) W/ HORIZ. REINFORCING @ EVERY SECOND COURSE; W/ NO. 5 VERT. RE-BAR @ 32" HORIZ. THE VERT. REINFORCING TO SLAB AND BOND BEAM REIN.; (RE: STRUCT. FOR LOCATION OF BOND BEAMS) (UP 9'-4" A.F.F.) | 15 1/4" |
| 4 | 8"x8"x16" (NOM.) GROUND FACED CONCRETE MASONRY UNIT W/ HORIZ. REINFORCING @ EVERY SECOND COURSE; W/ NO. 5 VERT. RE-BAR @ 32" HORIZ. THE VERT. REINFORCING TO SLAB AND BOND BEAM REIN.; (RE: STRUCT. FOR LOCATION OF BOND BEAMS) | 7 5/8" |
| 4 | 8"x8"x16" (NOM.) GROUND FACED CONCRETE MASONRY UNIT W/ HORIZ. REINFORCING @ EVERY SECOND COURSE; W/ NO. 5 VERT. RE-BAR @ 32" HORIZ. THE VERT. REINFORCING TO SLAB AND BOND BEAM REIN.; (RE: STRUCT. FOR LOCATION OF BOND BEAMS) | 7 5/8" |
| 5 | 8"x8"x16" (NOM.) GROUND FACED CONCRETE MASONRY UNIT (UP 9'-0" A.F.F.) W/ HORIZ. REINFORCING @ EVERY SECOND COURSE; W/ NO. 5 VERT. RE-BAR @ 32" HORIZ. THE VERT. REINFORCING TO SLAB AND BOND BEAM REIN.; (RE: STRUCT. FOR LOCATION OF BOND BEAMS); W/ 6" METAL STUDS (RE: NOTE 3) @ 16" o.c. ABOVE (BRACE AS REQ'D.); W/ ONE LAYER OF 5/8" G.P. BD. INT. SIDE 1", F., & PAINTED (TO UNDERSIDE OF ROOF) (R-13 UNFACED BATT INSULATION) | 7 5/8" |
| 6* | 3 HR. FIRE RATED WALL TO UNDERSIDE OF SOFFIT OF EXIST. BLDG. - 8"x8"x16" (NOM.) FIRE RATED GROUND FACED CONCRETE MASONRY UNIT W/ HORIZ. REINFORCING @ EVERY SECOND COURSE; W/ NO. 5 VERT. RE-BAR @ 32" HORIZ. THE VERT. REINFORCING TO SLAB AND BOND BEAM REIN.; (RE: STRUCT. FOR LOCATION OF BOND BEAMS) (GALV. STEP FLASHING @ ROOF) | 7 5/8" |

3 HR. RATED ASSEMBLY - UL U904

SPECIAL NOTES

- ALL ALUMINUM FRAMING TO BE HURRICANE RESISTANT. PROVIDE IRS01 FRAMING AND 350 IR DOORS AS MANUFACTURED BY KAMWEER OR AN APPROVED SUBSTITUTION.
- 1 HR. RATING
3 HR. RATING
REFER TO FLOOR PLAN FOR LOCATION AND SHEET T-02 (LIFE SAFETY PLAN)
- METAL STUD SUPPLIER IS RESPONSIBLE FOR ALL ENGINEERING OF INTERIOR AND EXTERIOR WALL FRAMING IN ACCORDANCE WITH ALL APPLICABLE CODES AND PROVIDING SHOP DRAWINGS & CALCULATIONS STAMPED AND SIGNED BY A REGISTERED ENGINEER LICENSED IN THE STATE OF LOUISIANA.

