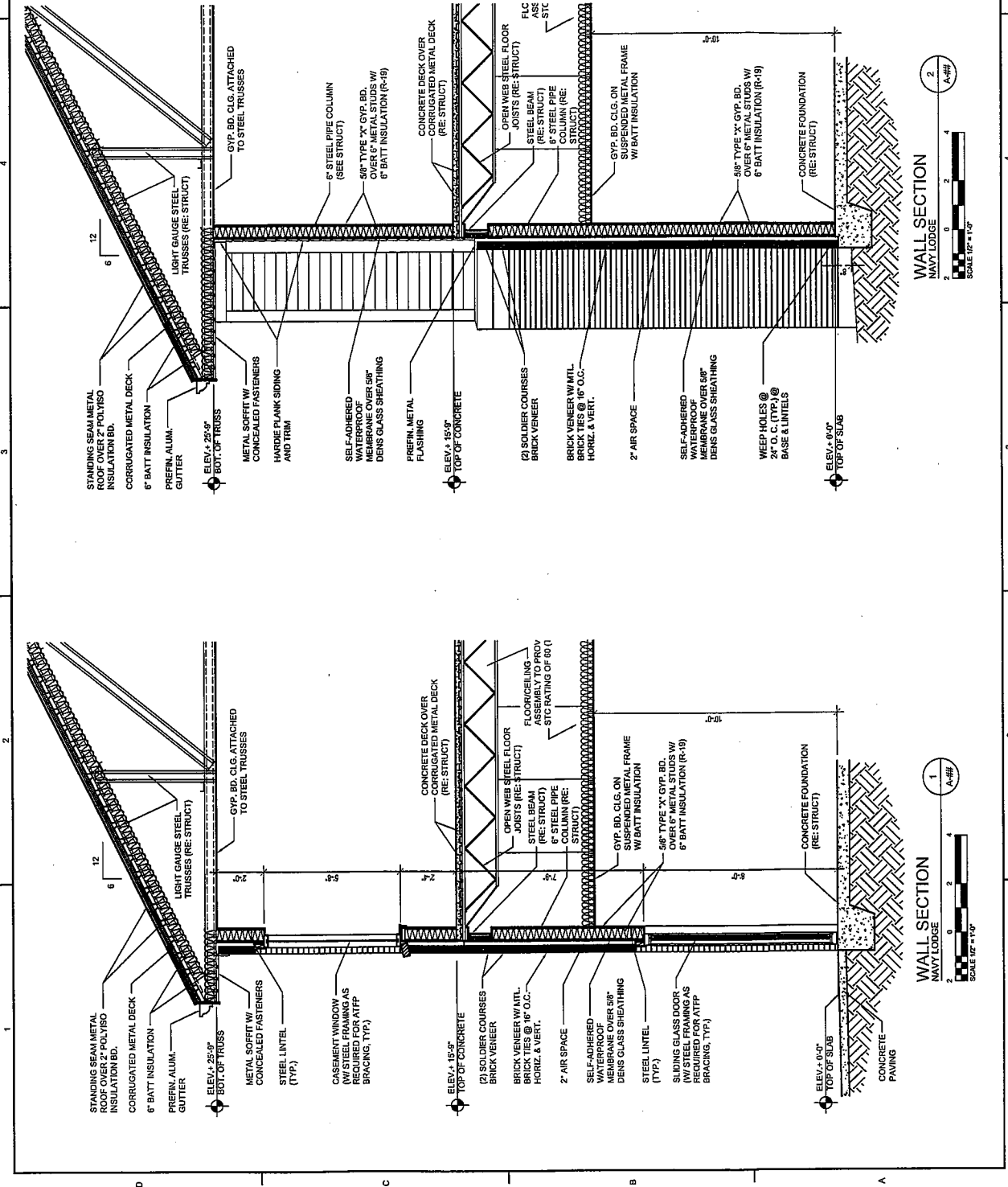
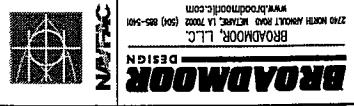


THE INFORMATION CONTAINED IN THIS DOCUMENT IS UNCLASSIFIED EXCEPT WHERE SHOWN OTHERWISE. IT IS TO BE CONTAINED, REPRODUCED, OR USED, FOR ANY PURPOSE, WITHOUT INFRINGING ANY PATENT RIGHTS THAT MAY BE ASSERTED HEREON. THE INFORMATION CONTAINED IN THIS DOCUMENT IS UNCLASSIFIED EXCEPT WHERE SHOWN OTHERWISE. IT IS TO BE CONTAINED, REPRODUCED, OR USED, FOR ANY PURPOSE, WITHOUT INFRINGING ANY PATENT RIGHTS THAT MAY BE ASSERTED HEREON.









**BROADMOOR, LLC**  
 2740 NORTH AVENUE ROAD, WEAVER, LA 70002 (504) 885-5401  
 WWW.BROADMOORDESIGN.COM

NAVAL FACILITIES ENGINEERING COMMAND  
 NAVAL FACILITIES ENGINEERING CENTER - SOUTHEAST  
 1403 - ADGON/ALL/13  
 GULFPORT, MS

NAVAL CONSTRUCTION BATTALION CENTER  
 GULFPORT, MS

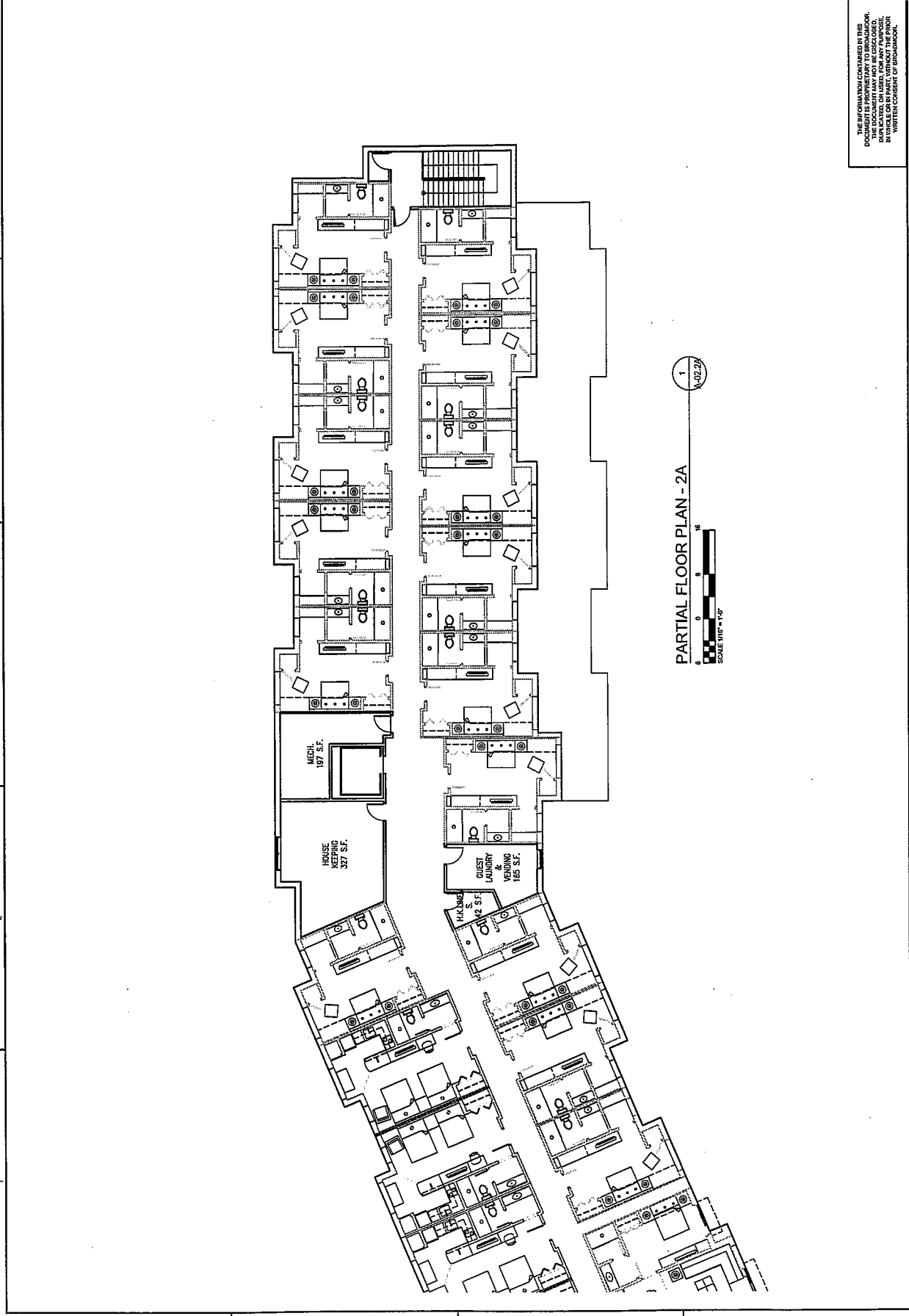
NAVY LODGE ADDITION

DEPARTMENT OF THE NAVY  
 NAVY FACILITIES ENGINEERING COMMAND

DATE: 11/11/11  
 DRAWN BY: [blank]  
 CHECKED BY: [blank]  
 DESIGNED BY: [blank]  
 PROJECT NO.: [blank]  
 SHEET NO.: [blank]  
 SHEETS: [blank]

NSB4540-10-R-0769  
 NAVY FACILITIES ENGINEERING CENTER  
 GULFPORT, MS

THE INFORMATION CONTAINED IN THIS DOCUMENT IS UNCLASSIFIED EXCEPT WHERE SHOWN OTHERWISE. IT IS TO BE CONTAINED, REPRODUCED, OR USED, FOR ANY PURPOSE, WITHOUT INFRINGING ANY PATENT RIGHTS THAT MAY BE ASSERTED HEREIN. THIS DOCUMENT IS NOT BE DISCLOSED, IN ANY MANNER, TO THE PUBLIC OR TO ANY OTHER ENTITY WITHOUT THE WRITTEN CONSENT OF BROADMOOR.



1  
 PARTIAL FLOOR PLAN - 2A  
 SCALE: 1/8" = 1'-0"





