

LEVEL ONE : 20, 373 SQ. FT

ROOM MIX			
ROOM TYPE	LEVEL ONE	LEVEL TWO	TOTAL
FAMILY SUITE	6	4	10
EXTENDED STAY	11	11	22
BUSINESS SUITE	2	16	18
			50

LEGEND		
SYMBOL		
(FS)	FAMILY SUITE	
(ES)	EXTENDED STAY	
(B)	BUSINESS SUITE	
	PUBLIC	
	BACK OF HOUSE	

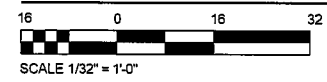
LEVEL TWO : 18, 933 SQ. FT

ROOM MIX			
ROOM TYPE	LEVEL ONE	LEVEL TWO	TOTAL
FAMILY SUITE	6	4	10
EXTENDED STAY	11	11	22
BUSINESS SUITE	2	16	18
			50

LEGEND		
SYMBOL		
(FS)	FAMILY SUITE	
(ES)	EXTENDED STAY	
(B)	BUSINESS SUITE	
	PUBLIC	
	BACK OF HOUSE	

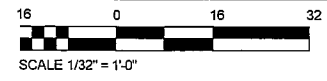


LEVEL ONE - OVERALL PLAN



1
A-02.0

LEVEL TWO - OVERALL PLAN



2
A-02.0

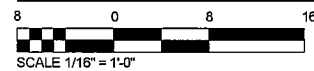
THE INFORMATION CONTAINED IN THIS DOCUMENT IS PROPRIETARY TO BROADMOOR. THE DOCUMENT MAY NOT BE DISCLOSED, DUPLICATED, OR USED, FOR ANY PURPOSE, IN WHOLE OR IN PART, WITHOUT THE PRIOR WRITTEN CONSENT OF BROADMOOR.

DES	DRW	DATE	APPR
REVIEWED BY		DESCRIPTION	
CHIEF ARCHITECT			
NAVAL FACILITIES ENGINEERING COMMAND			
NAVAL FACILITIES ENGINEERING COMMAND - SOUTHEAST			
NAF - JACKSONVILLE, FL			
NAVAL CONSTRUCTION BATTALION CENTER			
GULFPORT, MS			
NAVY LODGE ADDITION			
CODE ID NO. 80091	SIZE D		
SCALE:			
MAXIMUM NO.			
STA. PROJ. NO.			
WORK ORDER NO.			
CONSTR. CONTR. NO.			
N69450-10-R-0766			
NAVIFAC DRAWING NO.			
SHEET	OF		
A-02.0			



BROADMOOR
DESIGN
BROADMOOR, L.L.C.
2740 NORTH ARNOLD ROAD METairie, LA 70002 (504) 885-5101
www.broadmoordesign.com

PARTIAL FLOOR PLAN - 1B



1
A-02.1B

(9) EXTENDED STAY SUITES 406 SF EACH

CORRIDOR #1
1350 SF

(1) ADA FAMILY SUITE 778 SF

(1) BUSINESS SUITE 330 SF
A

(1) ADA EXT. STAY SUITE 402 SF

BUILDING ENGINEER 183 SF

ELEC. RM. 177 SF

LINEN 48 SF

STAIR #2 212 SF

(4) FAMILY SUITES 715 SF EACH

SYN	DESCRIPTION	DATE	APPR

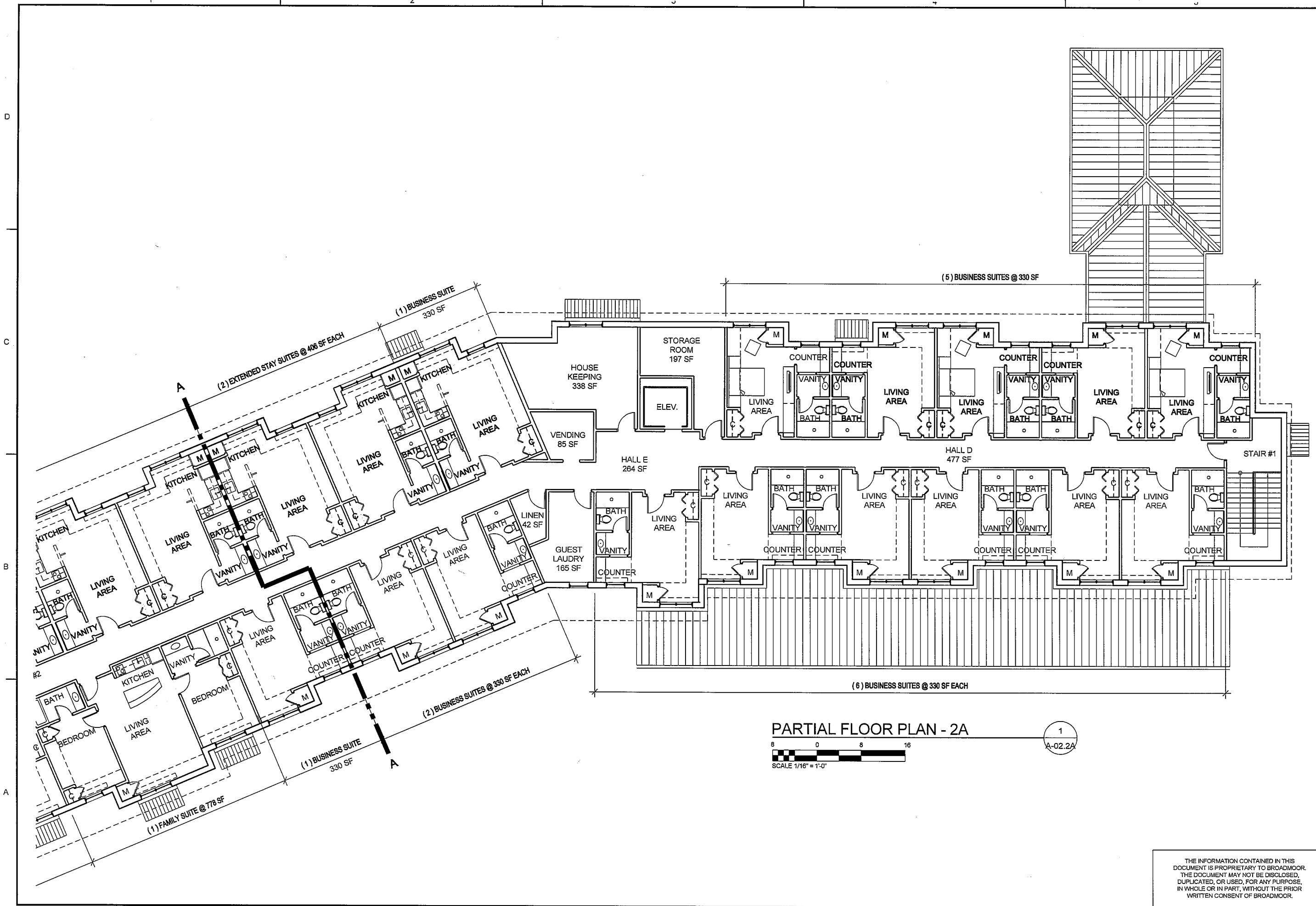


BROADMOOR
DESIGN
BROADMOOR, L.L.C.
2740 NORTH ARNOLD ROAD, METairie, LA 70002 (504) 885-5401
www.broadmoordllc.com

DES	DRW
REVIEWED BY	
PL/CM	
CHIEF ENGINEER	
DEPARTMENT OF THE NAVY	
NAVAL FACILITIES ENGINEERING COMMAND	
NAVAL FACILITIES ENGINEERING COMMAND - SOUTH-EAST	
NAVAL CONSTRUCTION BATTALION CENTER	
GULFPORT, MS	
NAVY LODGE ADDITION	
CODE ID. NO. 80091	SIZE 0
SCALE	
MAXIMUM NO.	
STA. PROJ. NO.	
WORK ORDER NO.	
CONSTR. CONTR. NO.	
N69450-10-R-0766	
NAVFAC DRAWING NO.	
SHEET	OF

THE INFORMATION CONTAINED IN THIS DOCUMENT IS PROPRIETARY TO BROADMOOR. THE DOCUMENT MAY NOT BE DISCLOSED, DUPLICATED, OR USED, FOR ANY PURPOSE, IN WHOLE OR IN PART, WITHOUT THE PRIOR WRITTEN CONSENT OF BROADMOOR.

A-02.1B




PARTIAL FLOOR PLAN - 2A

8 0 8 16

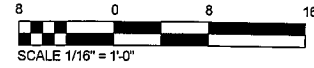
SCALE 1/16" = 1'-0"

1
A-02.2A

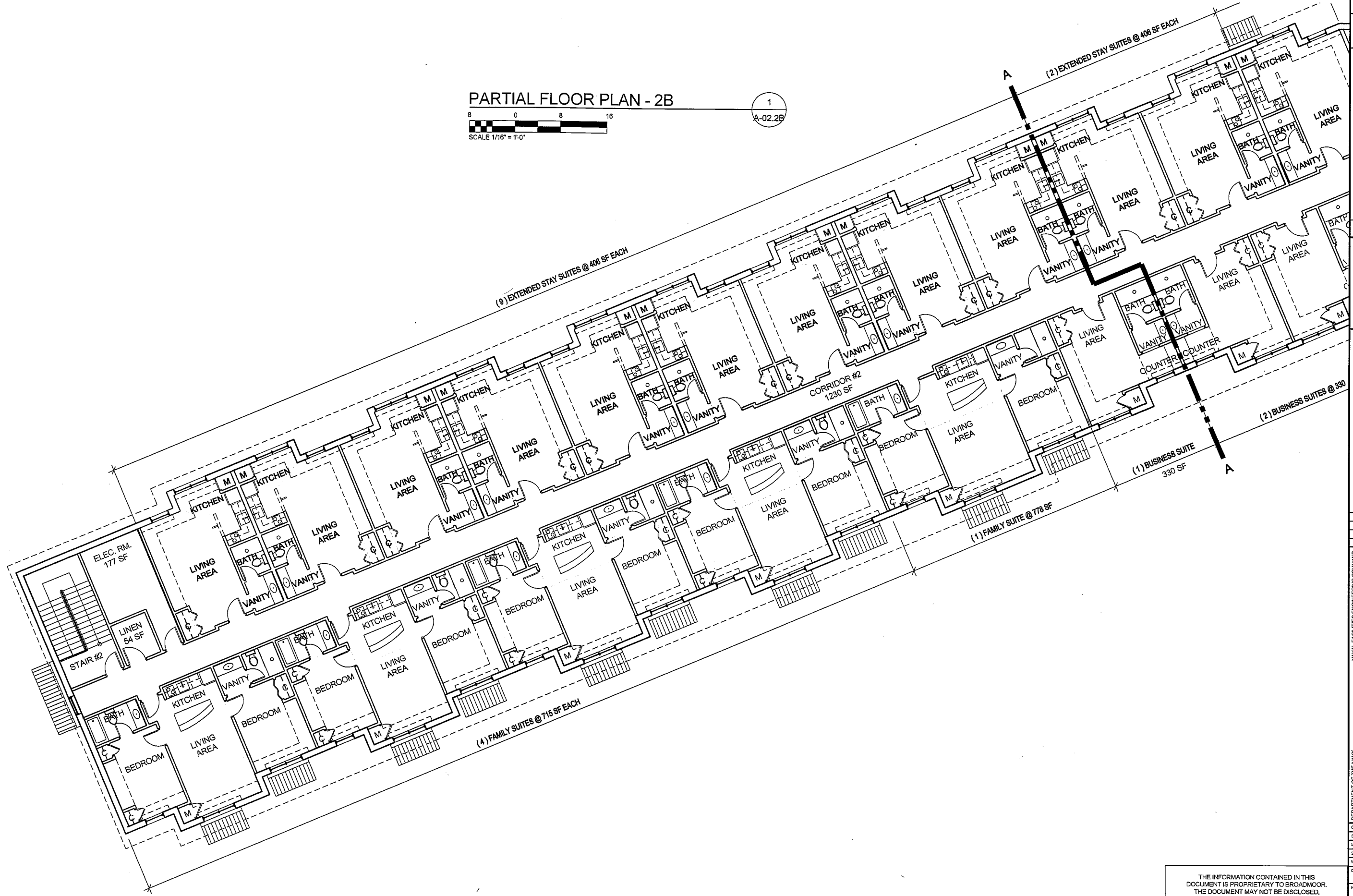
APPR	
DATE	
DESCRIPTION	
SYM	
	
BROADMOOR DESIGN BROADMOOR, L.L.C. 2710 NORTH ARCADE ROAD METairie, LA 70002 (504) 885-5401 www.broadmoorllc.com	
DES	DRW
REVIEWED BY	
PM/CM	
CHEF ENGINEER	
DEPARTMENT OF THE NAVY	
NAVAL FACILITIES ENGINEERING COMMAND - SOUTHEAST	
NAF - JACKSONVILLE, FL	
NAVAL CONSTRUCTION BATTALION CENTER	
GULFPORT, MS	
NAVY LODGE ADDITION	
CODE ID. NO. 80091	SIZE D
SCALE	
MAXIMUM NO.	
STA. PROJ. NO.	
WORK ORDER NO.	
CONSTR. CONTR. NO.	
N69450-10-R-0786	
NAVFAC DRAWING NO.	
SHEET	OF
A-02.2A	


THE INFORMATION CONTAINED IN THIS DOCUMENT IS PROPRIETARY TO BROADMOOR. THE DOCUMENT MAY NOT BE DISCLOSED, DUPLICATED, OR USED, FOR ANY PURPOSE, IN WHOLE OR IN PART, WITHOUT THE PRIOR WRITTEN CONSENT OF BROADMOOR.

PARTIAL FLOOR PLAN - 2B



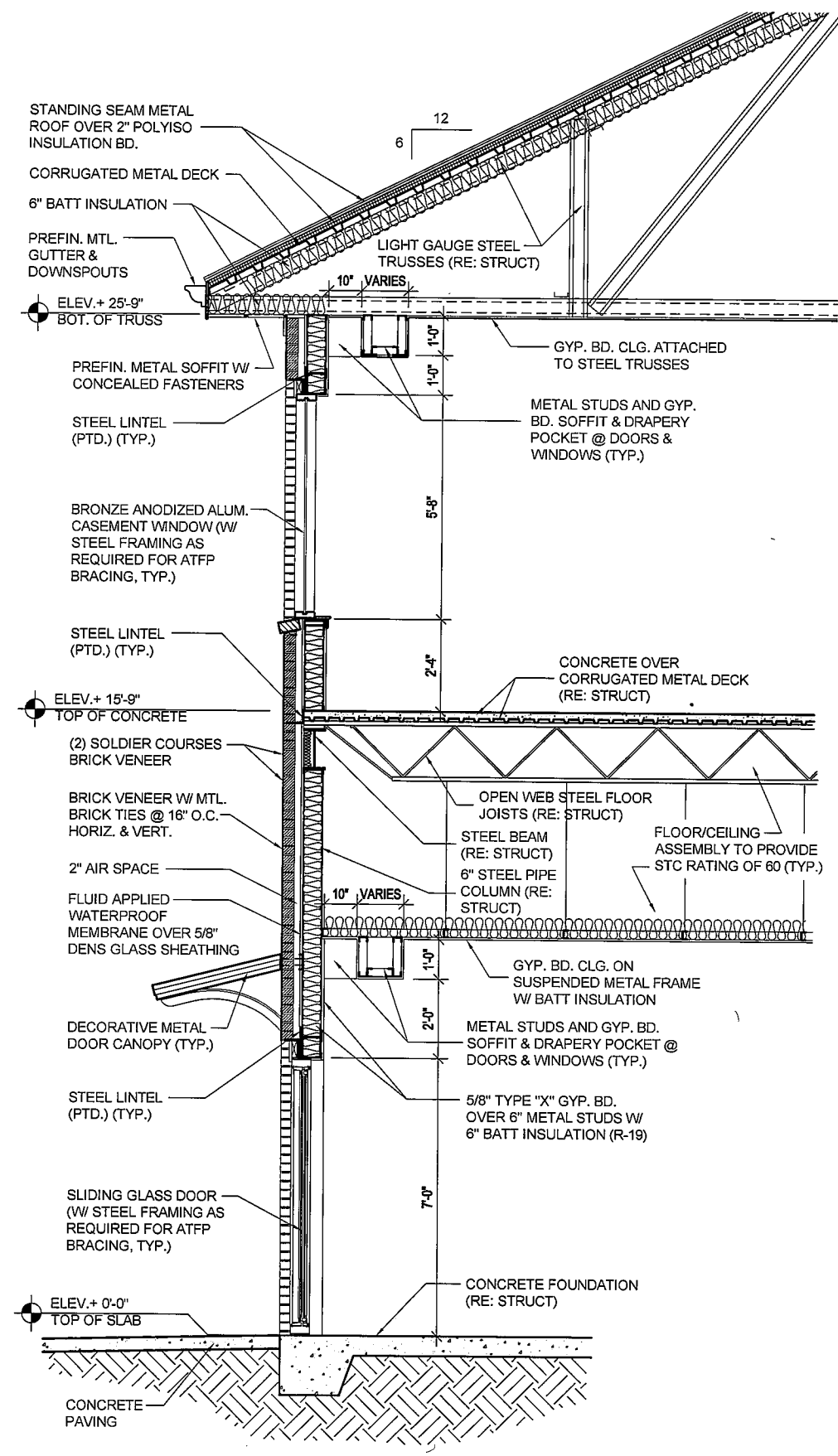
1
A-02.2B



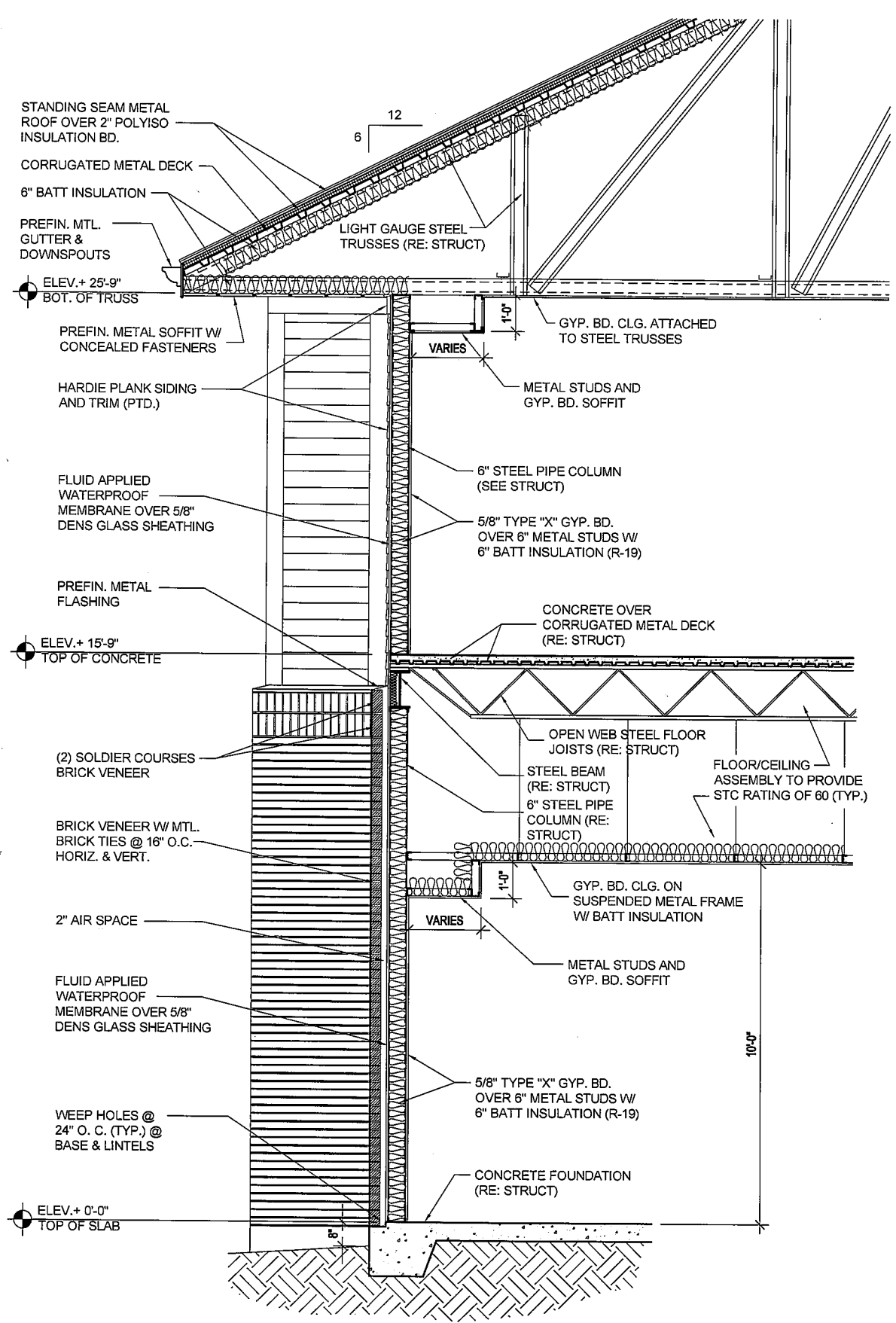
APPR	
DATE	
DESCRIPTION	
SYM	
 NAVFAC	
BROADMOOR DESIGN	
BROADMOOR, L.L.C. 2710 NORTH ARBOLETT ROAD, METairie, LA 70002 (504) 885-5401 www.broadmoorllc.com	
DES	DRW
REVIEWED BY	
PLMCM	
CHIEF ENGINEER	
DEPARTMENT OF THE NAVY NAVAL FACILITIES ENGINEERING COMMAND - SOUTHEAST INST - JACKSONVILLE, FL NAVAL CONSTRUCTION BATTALION CENTER GULFPORT, MS NAVY LODGE ADDITION	
CODE ID. NO. 60091	SIZE D
SCALE	
MAXIMUM	
STA. PROJ. NO.	
WORK ORDER NO.	
CONTR. CONTR. NO.	N69450-10-R-0786
NAVFAC DRAWING NO.	
SHEET	OF
A-02.2B	

THE INFORMATION CONTAINED IN THIS DOCUMENT IS PROPRIETARY TO BROADMOOR. THE DOCUMENT MAY NOT BE DISCLOSED, DUPLICATED, OR USED, FOR ANY PURPOSE, IN WHOLE OR IN PART, WITHOUT THE PRIOR WRITTEN CONSENT OF BROADMOOR.

D
C
B
A



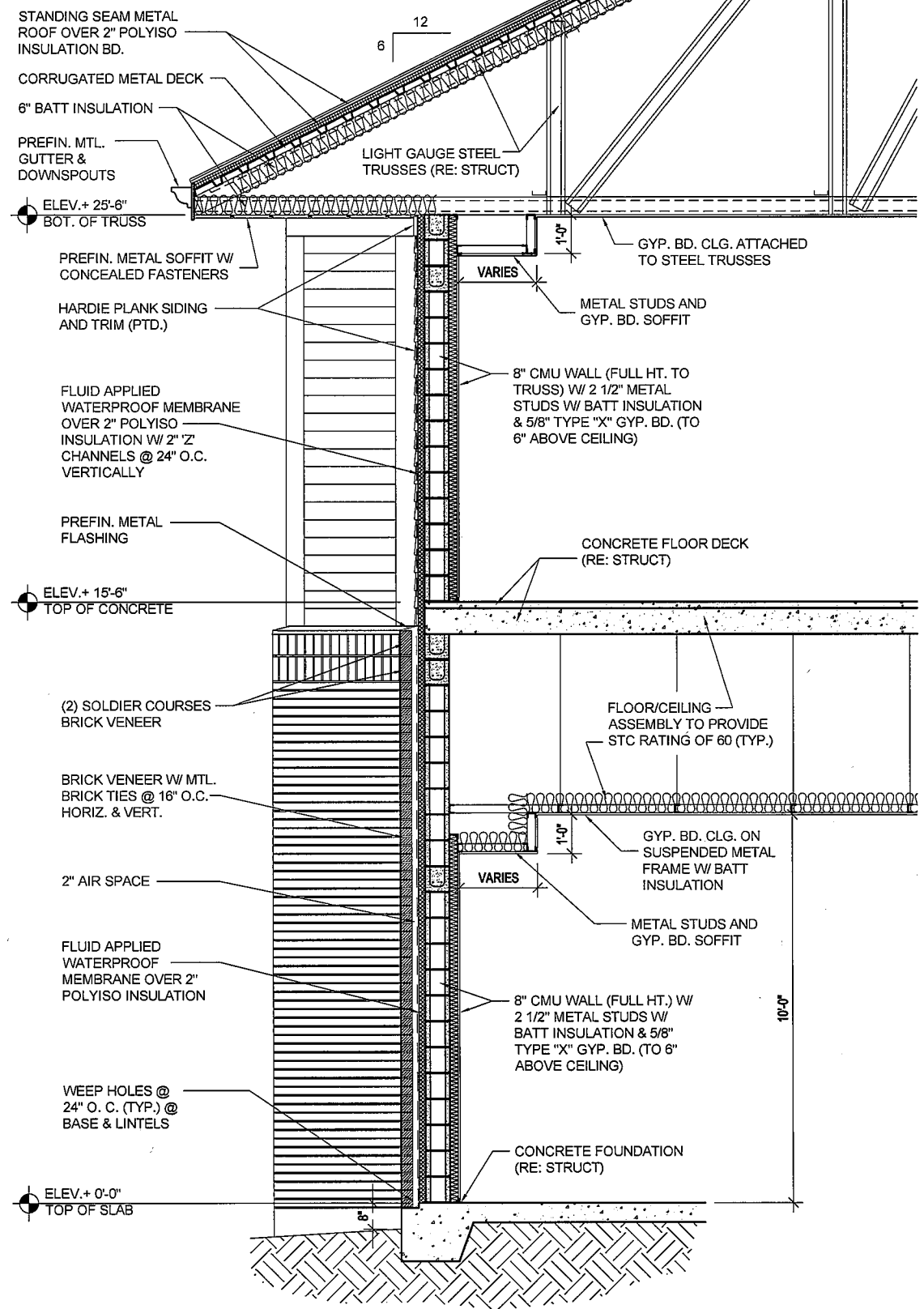
WALL SECTION
 1
 A-04.0
 SCALE 1/4" = 1'-0"



WALL SECTION
 2
 A-04.0
 SCALE 1/4" = 1'-0"

THE INFORMATION CONTAINED IN THIS DOCUMENT IS PROPRIETARY TO BROADMOOR. THE DOCUMENT MAY NOT BE DISCLOSED, DUPLICATED, OR USED, FOR ANY PURPOSE, IN WHOLE OR IN PART, WITHOUT THE PRIOR WRITTEN CONSENT OF BROADMOOR.

DESIGN	DATE	APPROVED
REVIEWED BY		
PROJECT		
CHECKED BY		
BROADMOOR DESIGN BROADMOOR, L.L.C. 2710 NORTH ARNOLD ROAD - METairie, LA 70002 (504) 885-5001 www.broadmoorllc.com		
DEPARTMENT OF THE NAVY NAVAL FACILITIES ENGINEERING COMMAND - SOUTHEAST 1PT - PWD NAVAL CONSTRUCTION BATTALION CENTER GULFPORT, MS NAVY LODGE ADDITION		
CODE ID. NO. 80091	SIZE D	
SCALE:		
MAXIMUM NO.		
STA. INCL. NO.		
WORK ORDER NO.		
CONSTR. CONTR. NO.	N69450-10-R-0786	
NAVFAC DRAWING NO.		
SHEET	OF	
A-04.0		



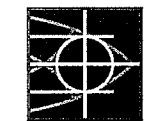
WALL SECTION
CLIN 002

1
A-04.1

2 0 2 4
SCALE 1/4" = 1'-0"

DES	DRW
REVIEWED BY	
PLMCM	
CHIEF ENGINEER	
DEPARTMENT OF THE NAVY	
NAVAL FACILITIES ENGINEERING COMMAND	
NAVAL FACILITIES ENGINEERING COMMAND - SOUTHEAST	
NAV - JACKSONVILLE, FL	
NAVAL CONSTRUCTION BATTALION CENTER	
GULFPORT, MS	
NAVY LODGE ADDITION	
CODE ID NO. 60391	SIZE D
SCALE:	
MAXIMUM NO.	
STA. PROJ. NO.	
WORK ORDER NO.	
CONSTR. CONTR. NO.	N69450-10-R-0766
NAVY DRAWING NO.	
SHEET	OF
A-04.1	

THE INFORMATION CONTAINED IN THIS DOCUMENT IS PROPRIETARY TO BROADMOOR. THE DOCUMENT MAY NOT BE DISCLOSED, DUPLICATED, OR USED, FOR ANY PURPOSE, IN WHOLE OR IN PART, WITHOUT THE PRIOR WRITTEN CONSENT OF BROADMOOR.



BROADMOOR
DESIGN

BROADMOOR, L.L.C.
2740 NORTH ARBOULET ROAD - METAIR, LA 70002 (504) 885-5401
www.broadmoordc.com