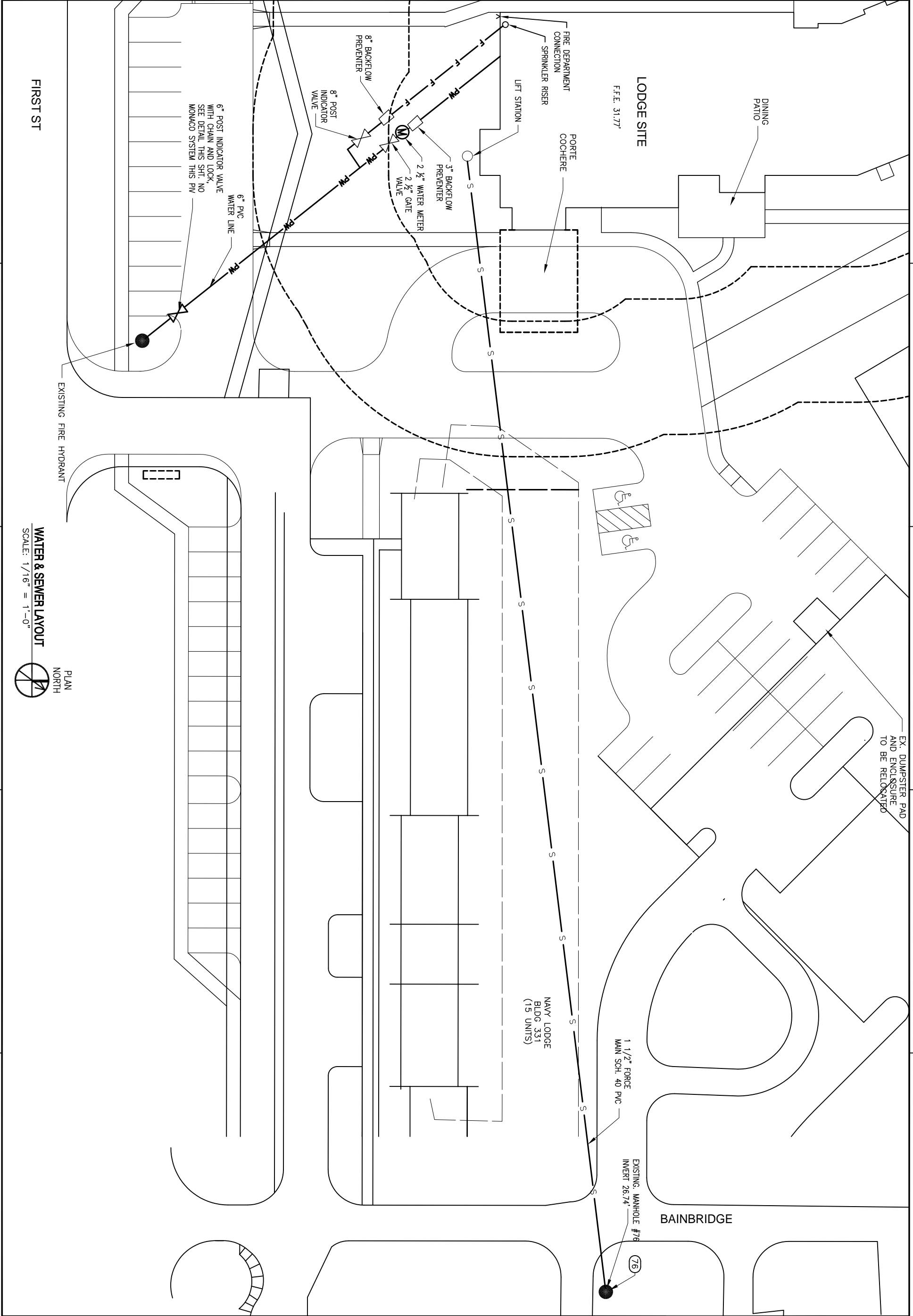


REVDATE:

A B C D



FIRST ST

LODGE SITE  
F.F.E. 31.77'

DINING PATIO

PORTE COCHERE

NAVY LODGE  
BLDG. 331  
(15 UNITS)

BAINBRIDGE

EX. DUMPSTER PAD  
AND ENCLOSURE  
TO BE RELOCATED

6" POST INDICATOR VALVE  
WITH CHAIN AND LOCK,  
SEE DETAIL THIS SH. NO  
MONACO SYSTEM THIS PIV

6" PVC  
WATER LINE

8" BACKFLOW  
PREVENTER

8" POST  
INDICATOR  
VALVE

2 1/2" WATER METER  
2 1/2" GATE  
VALVE

3" BACKFLOW  
PREVENTER

FIRE DEPARTMENT  
CONNECTION  
SPRINKLER RISER

LIFT STATION

1 1/2" FORCE  
MAIN SCH. 40 PVC

EXISTING MANHOLE #76  
INVERT 26.74'

(76)

EXISTING FIRE HYDRANT

WATER & SEWER LAYOUT  
SCALE: 1/16" = 1'-0"



1 2 3 4 5

1 2 3 4 5

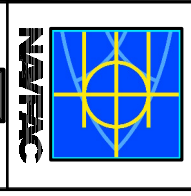
DEPARTMENT OF THE NAVY  
NAVAL FACILITIES ENGINEERING COMMAND  
NAVAL FACILITIES ENGINEERING COMMAND SOUTHEAST  
IPT GULF COAST  
GULFPORT MISSISSIPPI

NAVAL AIR STATION JACKSONVILLE  
MISSISSIPPI

NAVAL LODGE, NCBC GULFPORT  
WATER AND SEWER LAYOUT

DES. C. DAMMON | DRW. C. DAMMON  
REVIEWED BY: R. WILTSIE  
PAV/DAL  
CHIEF ENG/ARCH. P. DAMMON

**DAMMON**  
ENGINEERING, INC.  
1000 PINE BLVD., SUITE 200  
SLIDEL, LA 70368  
(985) 649-8832  
www.dammon.com



SYN	DESCRIPTION	DATE	APPR
	AS-BUILT CONDITIONS SHOWN	3-12-10	RW
	REVISED EXPANSION JOINT LOCATIONS	2-1-10	RW
	REVISED AS PER URS COMMENTS 9 OCTOBER 2009	11-6-09	RW

CODE ID. NO. \_\_\_\_\_ SIZE 0  
SCALE: AS SHOWN  
MAND. NO. \_\_\_\_\_  
STA. PROJ. NO. \_\_\_\_\_  
WORK ORDER NO. \_\_\_\_\_  
CONSTR. CONTR. NO. \_\_\_\_\_  
NAVFAC DRAWING NO. \_\_\_\_\_  
SHEET 031 OF \_\_\_\_\_

DATE PUBLISHED: 01 JAN 2009