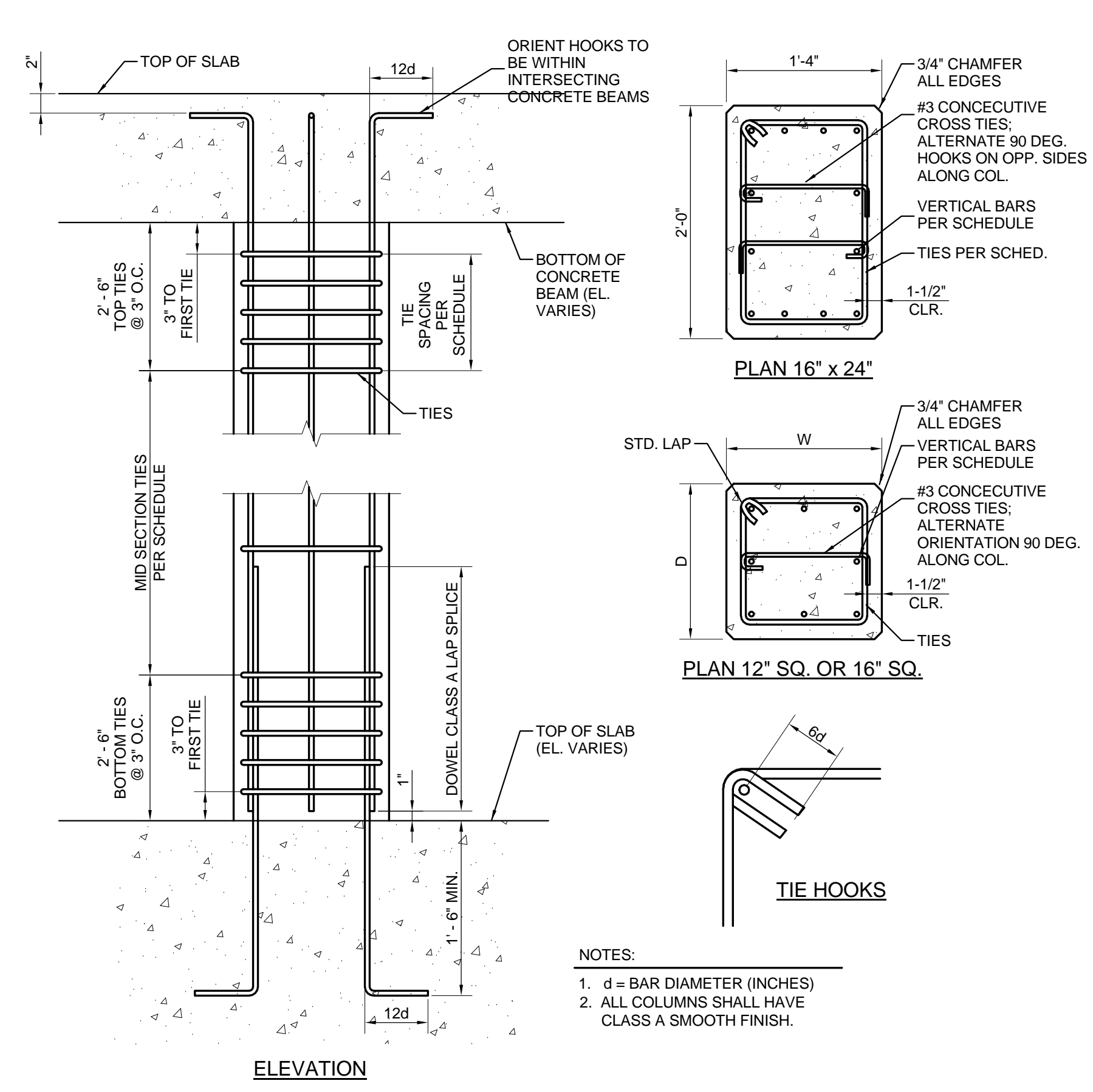


NO.	DATE	REVISION	DESCRIPTION

Level	Column Locations	Reinforcement	Level	Column Locations	Reinforcement
Level 2 18' - 3"	A-1	W10X49	Level 2 18' - 3"	D-5	W10X49
Level 1 0"	A-2	16" SQ. CONC. 16"X24" SQ. CONC.	Level 1 0"	D(3' - 10')-5	16"X24" SQ. CONC.
Level 2 18' - 3"	A-3	W10X33	Level 2 18' - 3"	D-6	W10X49
Level 1 0"	A-4	16"X24" SQ. CONC.	Level 1 0"	D(3' - 10')-6	16" SQ. CONC.
Level 2 18' - 3"	A-5	W10X49	Level 2 18' - 3"	D-7	W10X49
Level 1 0"	A-6	16"X24" SQ. CONC.	Level 1 0"	D(5 3/8')-7(11 3/8')	16" SQ. CONC.
Level 2 18' - 3"	A-8	HSS6X4X3/8	Level 2 18' - 3"	D-8	W10X33
Level 1 0"	B(-5 3/8')-5.9(3' - 1 1/8')	HSS6X4X3/8	Level 1 0"	D(5 3/8')-8(11 3/8')	16" SQ. CONC.
Level 2 18' - 3"	B(-5 3/8')-5.9(1' - 11 3/8')	HSS6X4X3/8	Level 2 18' - 3"	D(-2' - 8')-8(5 3/8')	HSS6X6X3/8
Level 1 0"	B-7	W10X33	Level 1 0"	D1-0	HSS6X6X3/8
Level 2 18' - 3"	B(11 3/8')-7(5 3/8')	HSS6X4X3/8	Level 2 18' - 3"	E-0	HSS6X6X3/8
Level 1 0"	B(-5 3/8')-7(11 3/8')	HSS6X4X3/8	Level 1 0"	E-1	W10X49
Level 2 18' - 3"	B(-5 3/8')-7(3' - 1 3/8')	HSS6X4X3/8	Level 2 18' - 3"	E-2	W10X49
Level 1 0"	C-7	W10X33	Level 1 0"	E(1' - 9 7/16')-7(4' - 6 1/8')	16"X24" SQ. CONC.
Level 2 18' - 3"	C(-5 3/8')-7(11 3/8')	HSS6X4X3/8	Level 2 18' - 3"	E-3	W10X33
Level 1 0"	C(-11 3/8')-7(5 3/8')	HSS6X4X3/8	Level 1 0"	E-4	W10X33
Level 2 18' - 3"	C(11 3/8')-8(5 3/8')	HSS6X4X3/8	Level 2 18' - 3"	E-5	W10X49
Level 1 0"	C(2' - 8')-8(5 3/8')	HSS6X4X3/8	Level 1 0"	E(-14' - 4 1/2')-5	16"X24" SQ. CONC.
Level 2 18' - 3"	C(-5 3/8')-8(11 3/8')	HSS6X4X3/8	Level 2 18' - 3"	E-6	W10X49
Level 1 0"	D-1	W10X49	Level 1 0"	E(-14' - 4 1/2')-6	16" SQ. CONC.
Level 2 18' - 3"	D-2	W10X49	Level 2 18' - 3"	E-7	W10X49
Level 1 0"	D-3	W10X33	Level 1 0"	F-0	HSS6X6X3/8
Level 2 18' - 3"	D-4	W10X33	Level 2 18' - 3"	F-1	HSS6X6X3/8
Level 1 0"			Level 1 0"	F-1A	HSS6X6X3/8

NOTE
1. SEE SHEET S6.3 FOR STEEL COLUMN BASE PLATE DETAILS.

MARK	COLUMN SIZE	GRID LOCATION	REINFORCEMENT
C-E-3	16"X24" SQ. CONC.	E-3	(12) - #7, #4 TIES @ 9" O.C.
C-E-4	16"X24" SQ. CONC.	E-4	(12) - #7, #4 TIES @ 9" O.C.
C-E-5	16"X24" SQ. CONC.	E-5	(12) - #7, #4 TIES @ 9" O.C.
C-E-6	16"X24" SQ. CONC.	E-6	(12) - #7, #4 TIES @ 9" O.C.
C-E-2	16"X24" SQ. CONC.	E-2	(12) - #7, #4 TIES @ 9" O.C.
C-A-3	16"X24" SQ. CONC.	A-3	(12) - #7, #4 TIES @ 9" O.C.
C-A-4	16"X24" SQ. CONC.	A-4	(12) - #7, #4 TIES @ 9" O.C.
C-A-5	16"X24" SQ. CONC.	A-5	(12) - #7, #4 TIES @ 9" O.C.
C-A-6	16"X24" SQ. CONC.	A-6	(12) - #7, #4 TIES @ 9" O.C.
C-A-2	16"X24" SQ. CONC.	A-2	(12) - #7, #4 TIES @ 9" O.C.
C-D-3	16"X24" SQ. CONC.	D-3	(12) - #7, #4 TIES @ 9" O.C.
C-D-4	16"X24" SQ. CONC.	D-4	(12) - #7, #4 TIES @ 9" O.C.
C-D-5	16"X24" SQ. CONC.	D-5	(12) - #7, #4 TIES @ 9" O.C.
C-D-6	16"X24" SQ. CONC.	D-6	(12) - #7, #4 TIES @ 9" O.C.
C-D-2	16"X24" SQ. CONC.	D-2	(12) - #7, #4 TIES @ 9" O.C.
C-D-7	16" SQ. CONC.	D-7	(8) - #7, #4 TIES @ 9" O.C.
C-D-8	16" SQ. CONC.	D-8	(8) - #7, #4 TIES @ 9" O.C.
C-C-8	16" SQ. CONC.	C-8	(8) - #7, #4 TIES @ 9" O.C.
C-C-7	16" SQ. CONC.	C-7	(8) - #7, #4 TIES @ 9" O.C.
C-B-7	16" SQ. CONC.	B-7	(8) - #7, #4 TIES @ 9" O.C.
C-E-7	16" SQ. CONC.	E-7	(8) - #7, #4 TIES @ 9" O.C.
C-E-1	16" SQ. CONC.	E-1	(8) - #7, #4 TIES @ 9" O.C.
C-A-1	16" SQ. CONC.	A-1	(8) - #7, #4 TIES @ 9" O.C.
C-D-1	16" SQ. CONC.	D-1	(8) - #7, #4 TIES @ 9" O.C.



MARK	SIZE B X D (IN.)	REINFORCEMENT
2B01	24 x 24	(4) - #7 TOP & BOTTOM W/ #3 TIES @ 9" O.C.
2B02	16 x 21	(3) - #5 TOP & (3) - #7 BOTTOM W/ #3 TIES @ 9" O.C.
2B03	24 x 21	(3) - #7 TOP & BOTTOM W/ #3 TIES @ 9" O.C.
2B04	16 x 21	(3) - #5 TOP & (3) - #7 BOTTOM W/ #3 TIES @ 9" O.C.
2B05	24 x 21	(3) - #7 TOP & BOTTOM W/ #3 TIES @ 9" O.C.
2B06	16 x 21	(3) - #5 TOP & (3) - #7 BOTTOM W/ #3 TIES @ 9" O.C.
2B07	24 x 21	(3) - #7 TOP & BOTTOM W/ #3 TIES @ 9" O.C.
2B08	16 x 21	(3) - #5 TOP & (3) - #7 BOTTOM W/ #3 TIES @ 9" O.C.
2B09	24 x 21	(3) - #7 TOP & BOTTOM W/ #3 TIES @ 9" O.C.
2B10	16 x 21	(3) - #5 TOP & (3) - #7 BOTTOM W/ #3 TIES @ 9" O.C.
2B11	24 x 21	(4) - #7 TOP & (5) - #7 BOTTOM W/ #3 TIES @ 9" O.C.
2B12	16 x 21	(3) - #5 TOP & BOTTOM W/ #3 TIES @ 9" O.C.
2B13	16 x 21	(3) - #5 TOP & BOTTOM W/ #3 TIES @ 9" O.C.
2B14	16 x 21	(3) - #5 TOP & BOTTOM W/ #3 TIES @ 9" O.C.
2B15	24 x 24	(3) - #5 TOP & (5) - #7 BOTTOM W/ #3 TIES @ 9" O.C.
2B16	18 x 41-1/2	(4) - #5 TOP & (4) - #7 BOTTOM W/ #3 TIES @ 9" O.C.
2B17	16 x 21	(3) - #5 TOP & BOTTOM W/ #3 TIES @ 9" O.C.
2B18	16 x 21	(3) - #5 TOP & BOTTOM W/ #3 TIES @ 9" O.C.
2B19	16 x 21	(3) - #5 TOP & BOTTOM W/ #3 TIES @ 9" O.C.
2B20	24 x 24	(4) - #7 TOP & BOTTOM W/ #4 TIES @ 9" O.C.
2B21	18 x 41-1/2	(4) - #5 TOP & (4) - #7 BOTTOM W/ #3 TIES @ 9" O.C.
2B22	16 x 21	(3) - #7 TOP & BOTTOM W/ #3 TIES @ 9" O.C.
2B23	16 x 21	(3) - #5 TOP & BOTTOM W/ #3 TIES @ 9" O.C.
2B24	16 x 21	(3) - #5 TOP & BOTTOM W/ #3 TIES @ 9" O.C.
2B25	16 x 21	(3) - #5 TOP & BOTTOM W/ #3 TIES @ 9" O.C.
2B26	12 x 12	(2) - #7 TOP & BOTTOM W/ #4 TIES @ 12" O.C.
2B27	12 x 12	(2) - #7 TOP & BOTTOM W/ #4 TIES @ 12" O.C.
2B28	12 x 12	(2) - #7 TOP & BOTTOM W/ #4 TIES @ 12" O.C.

