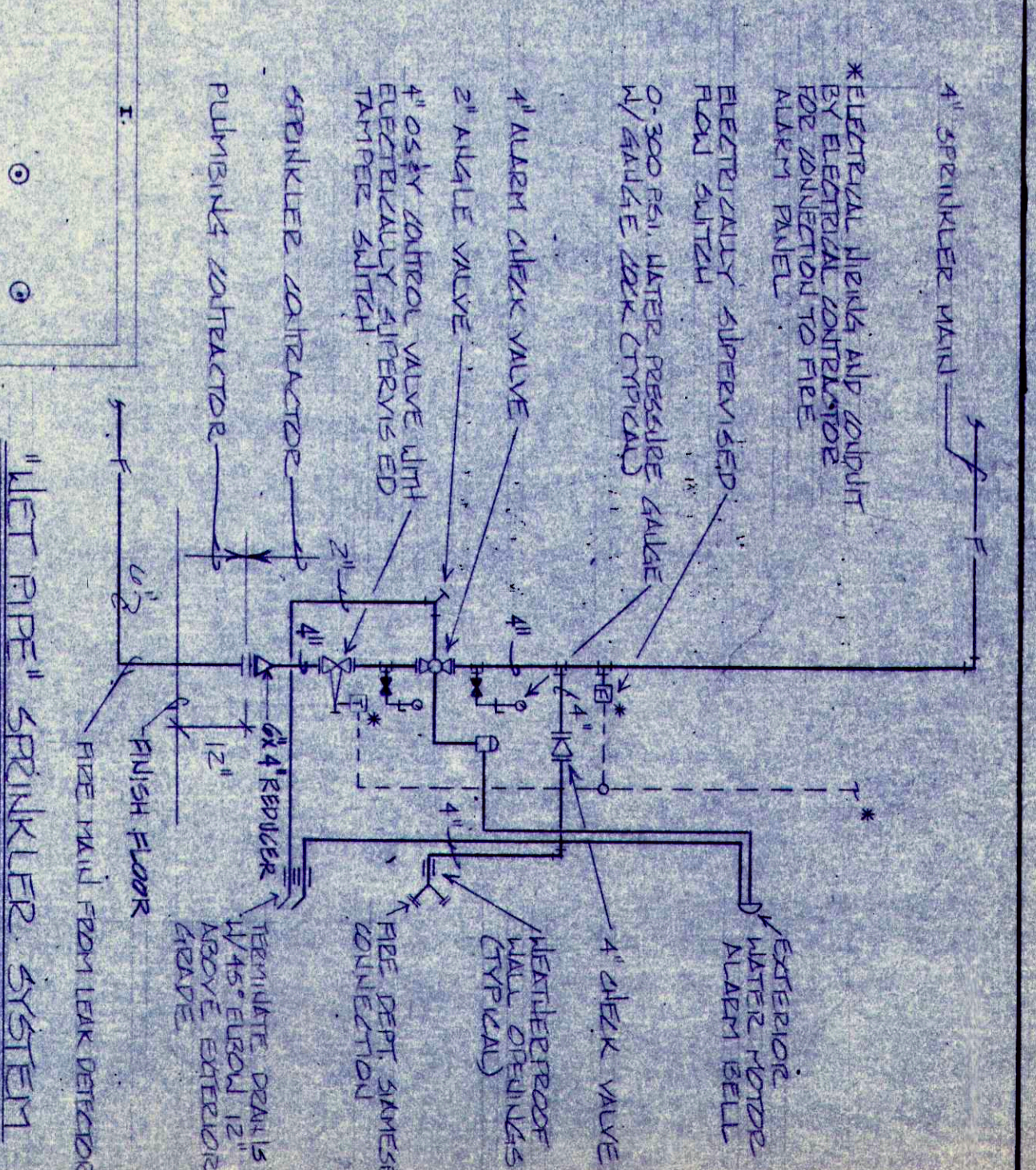
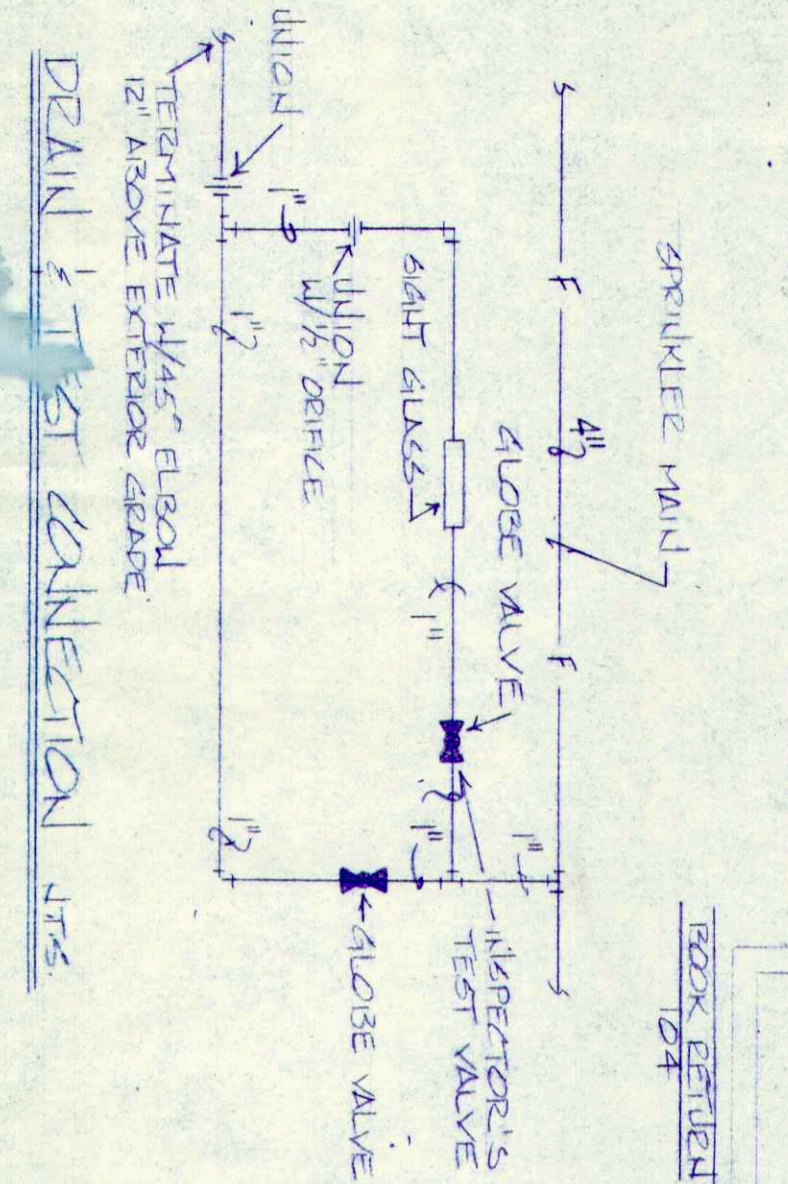
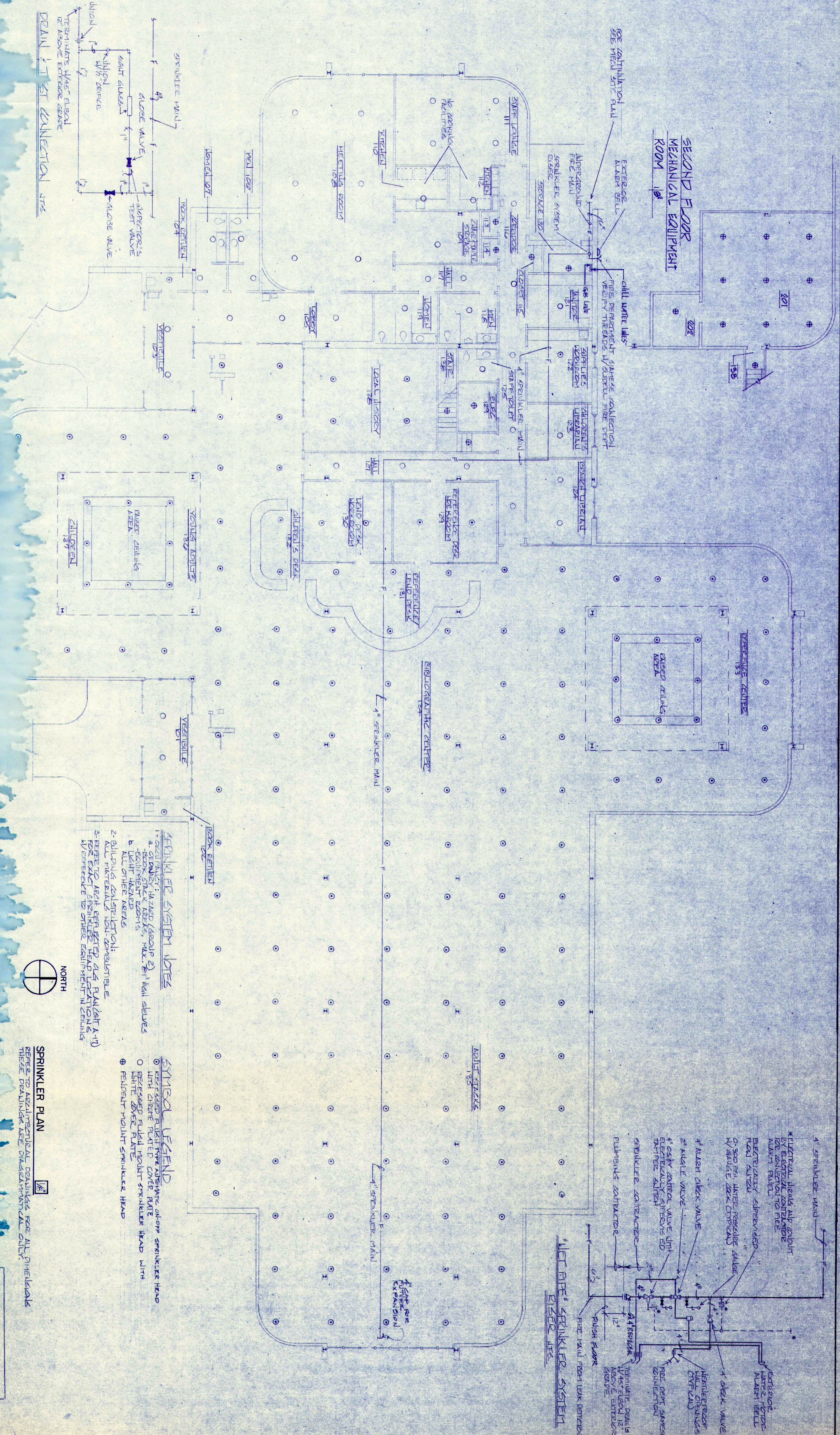


SECOND FLOOR
MECHANICAL EQUIPMENT ROOM



SPRINKLER SYSTEM NOTES

1. INSTALLATION: HAZARDOUS (GROUP 2)
 - a. ROOMS: STAIR AREAS, MAX 8' HIGH SHELVES
 - b. EQUIPMENT ROOMS
 - c. LIGHT HAZARD
 - d. ALL OTHER AREAS
2. BUILDING CONSTRUCTION: ALL MATERIALS NON-COMBUSTIBLE
3. REFER TO ARCH REFERENCE AS PLAN (A-1) FOR EXACT SPRINKLER HEAD LOCATION & DIFFERENCE TO OTHER EQUIPMENT IN CEILING

SYMBOL LEGEND

- SPRINKLER HEAD
- SPRINKLER HEAD WITH SHIELD
- SPRINKLER HEAD WITH WHITE COVER PLATE
- PENDENT MOUNT SPRINKLER HEAD

SPRINKLER PLAN

REFER TO ARCHITECTURAL DRAWINGS FOR ALL DIMENSIONS THESE DRAWINGS ARE DIMENSIONAL ONLY

3. R. ELECTRIC CELL PLAN
P. L. D. ATTENTION AND X TOILET
P. L. D. ATTENTION AND X TOILET
P. L. D. ATTENTION AND X TOILET

ENGINEERS
MANUFACTURING & ASSOCIATES, INC.
2115 KALISTE SALOON RD., SUITE 300
METTER, LOUISIANA, 70568
(504) 831-0074

CONSULTING
MANUFACTURING & ASSOCIATES, INC.
2115 KALISTE SALOON RD., SUITE 300
METTER, LOUISIANA, 70568
(504) 831-0074

SHEET
M-4

LAUTNER & LATHAM

SLIDELL BRANCH LIBRARY

M-4